

# Project overview

Wardell Public School suffered extensive damage during the 2022 flood events with flood water entering the school and damaging classrooms, the administration area, library, playgrounds, gardens and toilets.

The Department of Education has committed to rebuild the school and deliver core facilities including classrooms, new administration facilities, library, underneath play areas and toilets on the first and ground levels.



New permanent classrooms



New library



New play space



New administration area



New school entry



New canteen

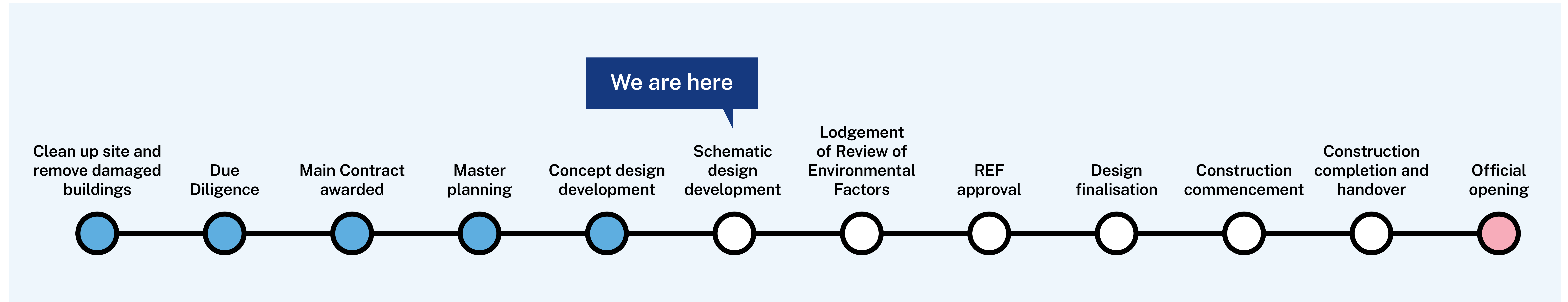


Aerial artist impression of Wardell Public School (subject to change).

## Wardell Public School

For more information phone: 1300 482 651  
Email: [schoolinfrastructure@det.nsw.edu.au](mailto:schoolinfrastructure@det.nsw.edu.au)  
[schoolinfrastructure.nsw.gov.au](http://schoolinfrastructure.nsw.gov.au)

# Project timeline



## What's next?

Concept, schematic plans and colour schemes will be finalised in early September. Then a Review of Environmental Factors (REF) for the build will be lodged with stakeholders.

A REF is an environmental assessment used to determine whether an activity should be approved by taking into account all matters that affect or may affect the environment. This can include technical reports prepared by industry specialists, including Ecological Assessments, Aboriginal and European Heritage Assessment Reports, Contaminated Lands, Noise and Vibration, Visual and Amenity, Traffic and Transport to address the specific details required for the project approval.

The building contractor will work with School Infrastructure NSW to determine a timeline for the demolition, building and any staging requirements.

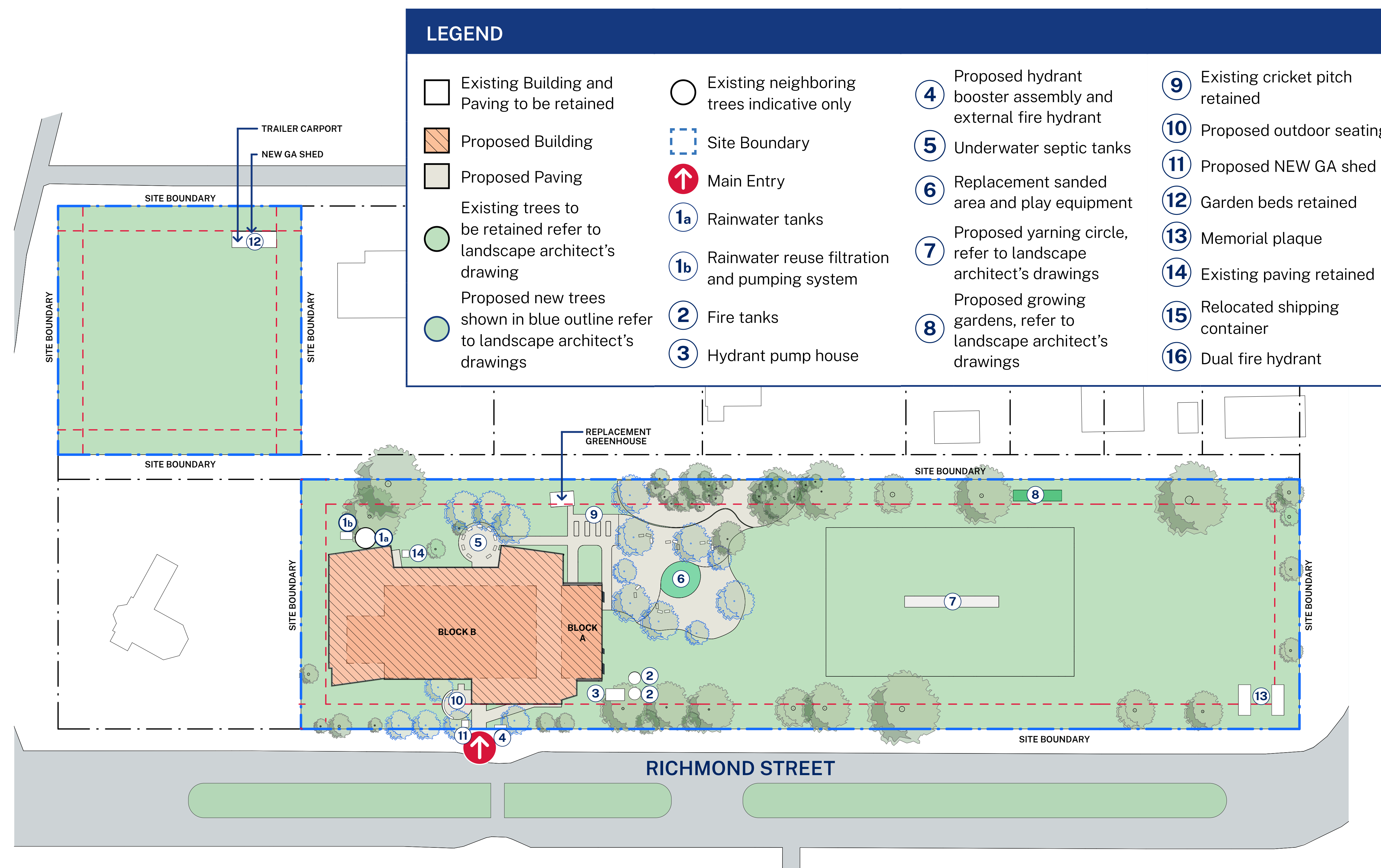
We look forward to sharing more information with you as the project progresses. You can stay informed by regularly visiting the project web page and you can contact us via email or phone if you have any questions or feedback about the Wardell Public School Flood Recovery Project.

## Wardell Public School

For more information phone: 1300 482 651  
Email: [schoolinfrastructure@det.nsw.edu.au](mailto:schoolinfrastructure@det.nsw.edu.au)  
[schoolinfrastructure.nsw.gov.au](http://schoolinfrastructure.nsw.gov.au)

# Wardell Master Plan and aerial view

The layout of the new school maximises the play space and sits carefully amongst the trees and landscape capturing beautiful views and taking advantage of the solar aspect and the breeze.



Aerial artist impression of Wardell Public School (subject to change).

\*Note: Final design and landscaping (subject to change).

## Northern Rivers Flood Recovery Project

For more information phone: 1300 482 651  
 Email: [schoolinfrastructure@det.nsw.edu.au](mailto:schoolinfrastructure@det.nsw.edu.au)  
[schoolinfrastructure.nsw.gov.au](http://schoolinfrastructure.nsw.gov.au)

# Wardell Public School Flood Resilient Design

The façade of the new Wardell Public School has been designed to be respectful of the local environment, visually appealing while embedding the colours of country and community into the materials and finishes.

The school is being built above the flood requirements to ensure that if there are any future floods, the impact will be minimal.

The area under the building will be used as an outdoor play area and classroom.

The images here are artist's impressions only. Final colour and landscaping is subject to change through final design stages and landscaping.



Artist impression entry perspective (subject to change).



Artist impression of outdoor learning space (subject to change).

## Northern Rivers Flood Recovery Project

For more information phone: 1300 482 651  
Email: [schoolinfrastructure@det.nsw.edu.au](mailto:schoolinfrastructure@det.nsw.edu.au)  
[schoolinfrastructure.nsw.gov.au](http://schoolinfrastructure.nsw.gov.au)



# Wardell Public School undercroft floor plan

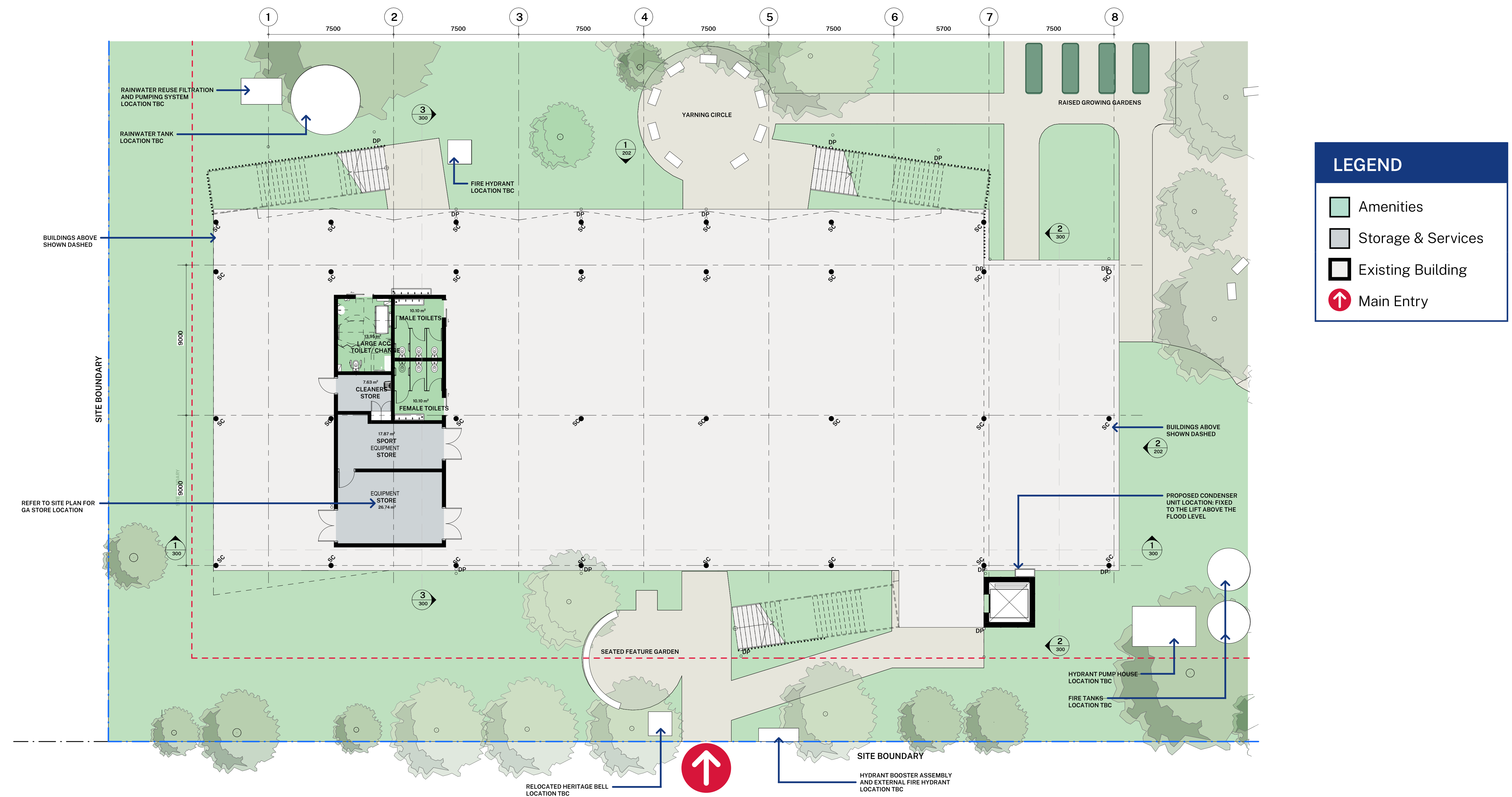
The layout of the multipurpose undercroft (underneath the 1st floor) is designed to maximise the use of space for the school and wider community.

The undercroft will be the ideal location for waiting for buses, games out of the sun and rain, and assemblies.

The undercroft capacity will have adequate capacity for school and community meetings.

Male, female and accessible toilets are located in the undercroft.

Storage and cleaner facilities are also located here.



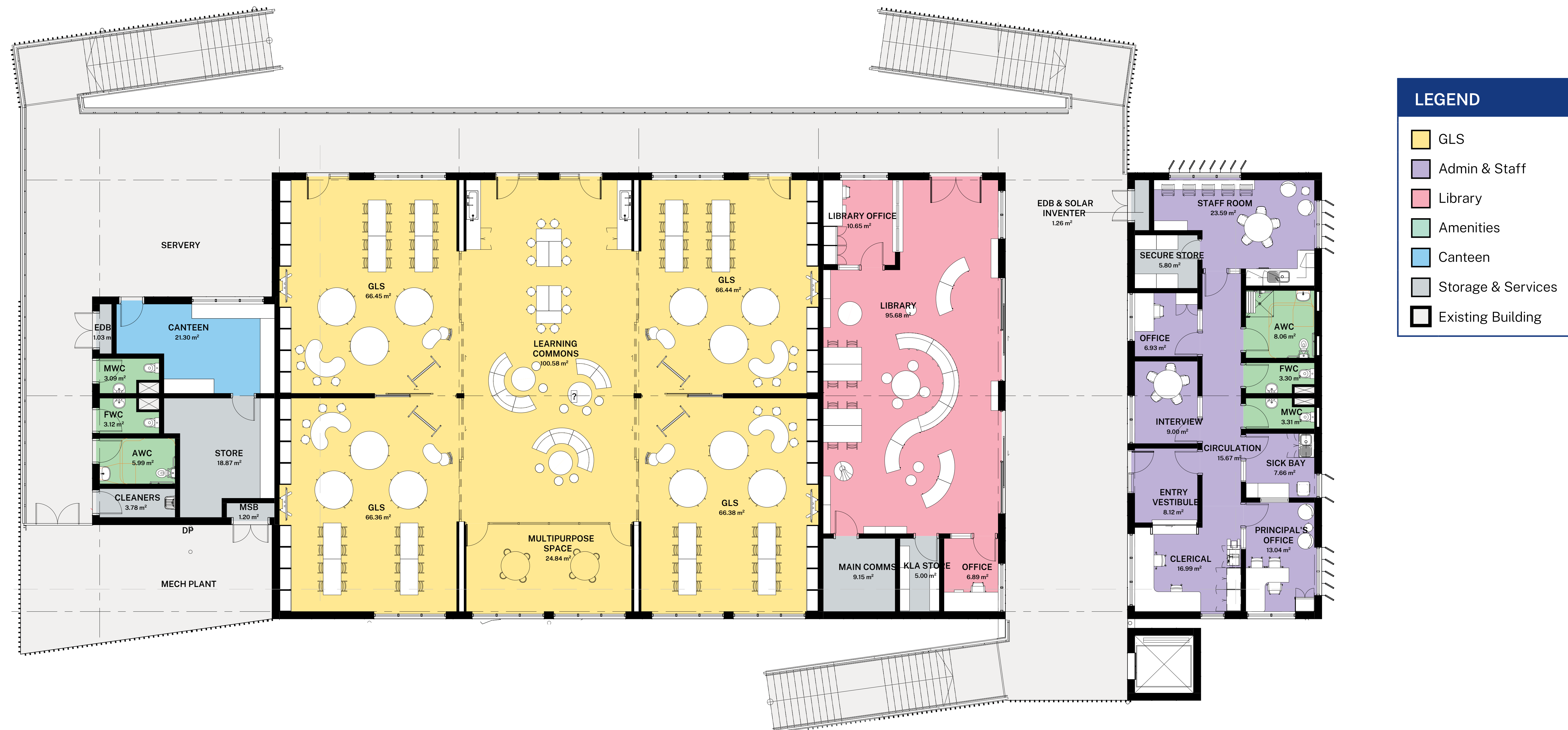
Undercroft Plans (subject to change).

## Northern Rivers Flood Recovery Project

For more information phone: 1300 482 651  
Email: [schoolinfrastructure@det.nsw.edu.au](mailto:schoolinfrastructure@det.nsw.edu.au)  
[schoolinfrastructure.nsw.gov.au](http://schoolinfrastructure.nsw.gov.au)

# Wardell Public School

## Classrooms, library, administration and upstairs facilities



Level 1 Concept Plans (subject to change).

## Northern Rivers Flood Recovery Project

For more information phone: 1300 482 651  
Email: [schoolinfrastructure@det.nsw.edu.au](mailto:schoolinfrastructure@det.nsw.edu.au)  
[schoolinfrastructure.nsw.gov.au](http://schoolinfrastructure.nsw.gov.au)

# How standardised learning hub layouts work in practice

STEP 1



STEP 2



STEP 3



STEP 4

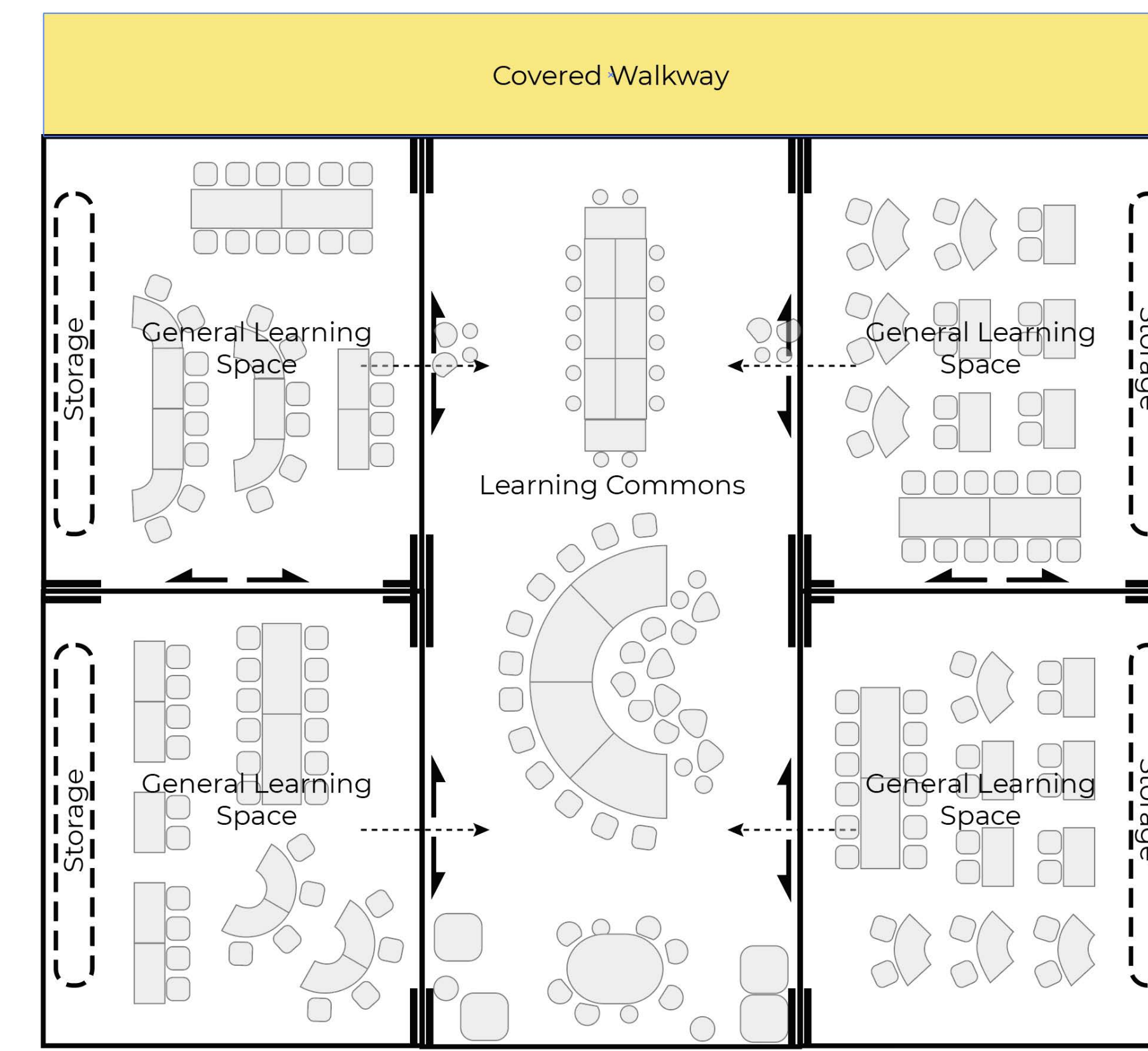
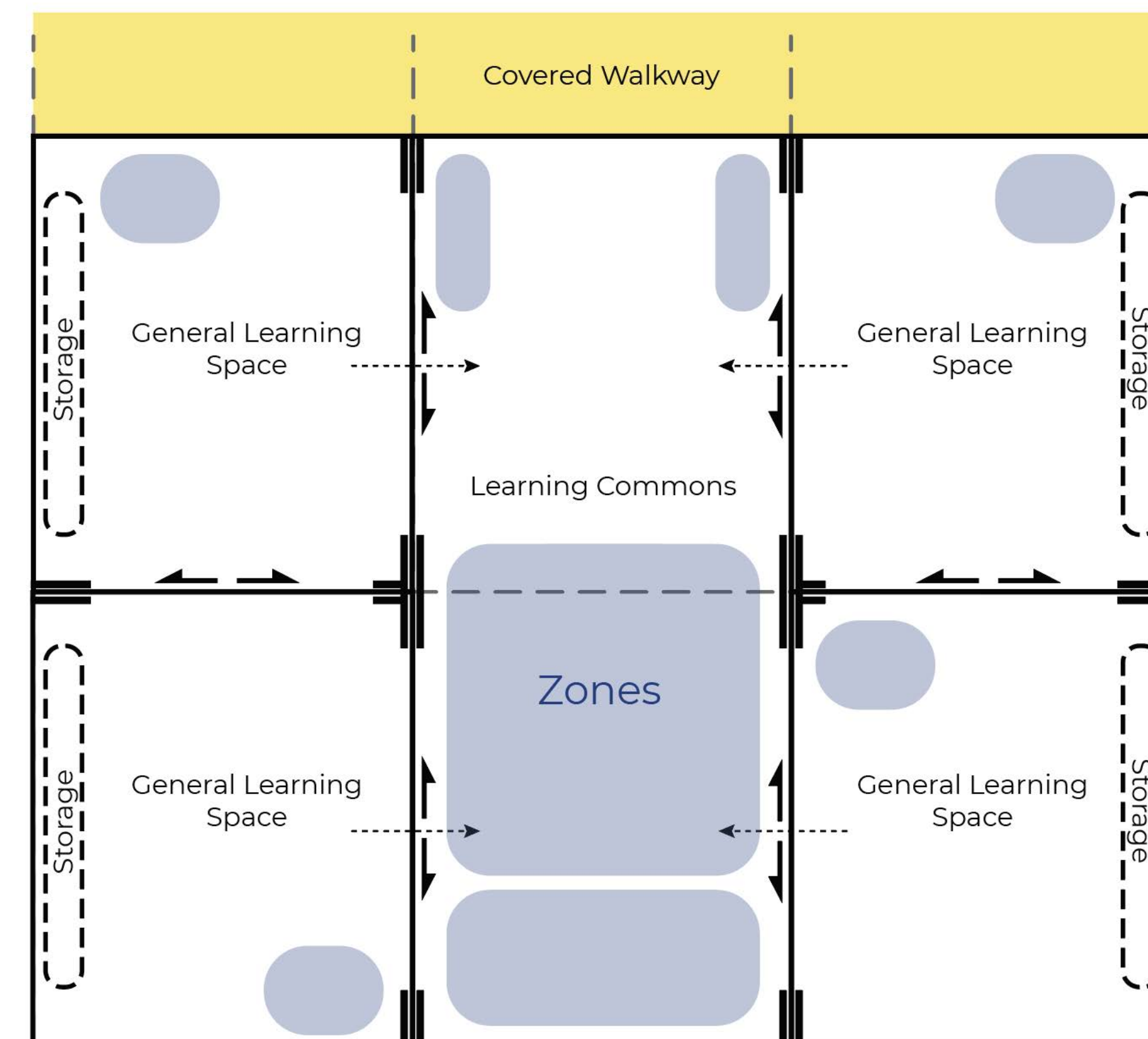
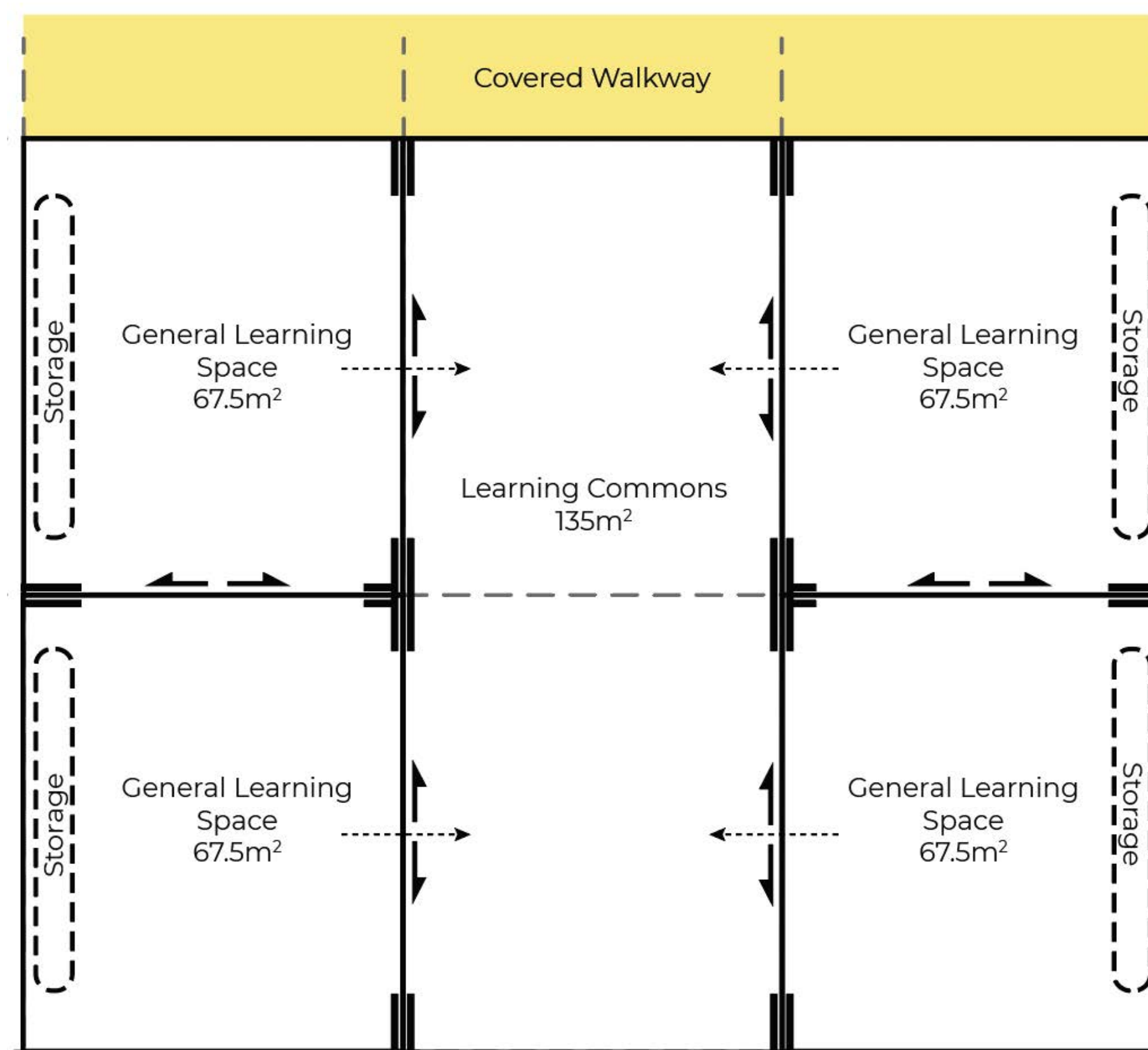


Standardised design for a school learning hub, featuring 4 learning spaces and a learning commons.

The design is modified to suit the school context outlined in the education rationale. Schools can include practical activity areas (PAAs), STEM spaces or other multi-purpose spaces (MPSs) that support collaboration, preparation or sensory needs.

Furniture settings are selected to align to local teaching and learning requirements. Furniture selection is supported by professional learning and other resources.

From a 2D plan to a flexible learning space, ready for students to engage in their learning activities.



## Northern Rivers Flood Recovery Project

For more information phone: 1300 482 651  
Email: [schoolinfrastructure@det.nsw.edu.au](mailto:schoolinfrastructure@det.nsw.edu.au)  
[schoolinfrastructure.nsw.gov.au](http://schoolinfrastructure.nsw.gov.au)

# Consultation and keeping your school community informed

School Infrastructure NSW adopts a consistent and strategic approach to general community communications and engagement across all of our projects.

We are committed to engaging with all stakeholders, including the local community, through the entire project lifecycle; from planning, design and delivery to operations and maintenance.

Examples of when we will consult, communicate and engage with the school community while the project is underway may include:



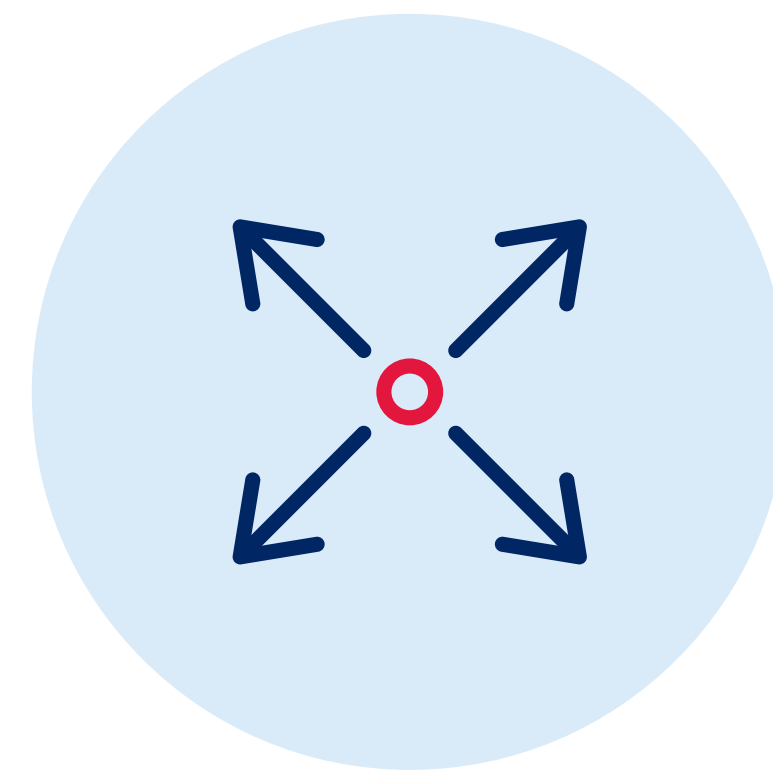
**Engagement of consultants and contractors**



**Construction milestones**



**School design**

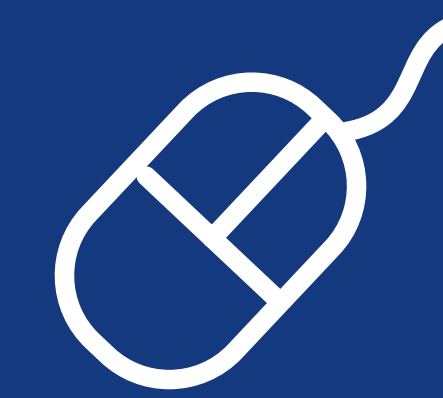


**Potential school or local community impacts**

School Infrastructure NSW will continue to share information with the school community as work progresses, by posting project updates on the website.

We thank you for all your patience during this important program of work.

## Stay informed



### Website

Stay up to date by visiting the School Infrastructure NSW website [schoolinfrastructure.nsw.gov.au](http://schoolinfrastructure.nsw.gov.au)



### Email

Contact the Community Engagement team by emailing [schoolinfrastructure@det.nsw.edu.au](mailto:schoolinfrastructure@det.nsw.edu.au)



### Phone

Contact us between 9 am and 5 pm, Monday to Friday on **1300 482 651**

## Northern Rivers Flood Recovery Project

For more information phone: 1300 482 651  
Email: [schoolinfrastructure@det.nsw.edu.au](mailto:schoolinfrastructure@det.nsw.edu.au)  
[schoolinfrastructure.nsw.gov.au](http://schoolinfrastructure.nsw.gov.au)