

Central Sydney Intensive English High School

Works notification | 12 December 2024

Dear staff, parents, carers and neighbours,

We are installing a new shade structure over the sports court to improve playground facilities for students at Central Sydney Intensive English High School.

Construction work timeframe

The main works for this project will occur in two stages:

- during the Summer School Holidays in December 2024 and January 2025
- during the Autumn School Holidays in April 2025.

The first stage involves cutting the concrete and laying the foundations. Most of the work will take place during the school holidays with minor works occurring in Term 1 2025.

During Term 1 small sections of the site will be fenced off as minor footing works are underway, however the playground and sports court will be open for use by students on Day 1 Term 1 2025.

There will be no operational impact to students and staff during these works.

The final stage will take place during the Autumn School Holidays when steel and crane work will be used to install the shade structure. We will notify the community before these works start.

Work hours will be Monday to Friday 7:30 am to 5:30 pm and Saturday 8 am to 1 pm.

This project is expected to be finished in time for students to enjoy from Day 1 Term 2 2025.

Traffic and parking impacts

Construction vehicles will access the school site via the 2 main vehicle entrances on Suttor Street. All work vehicles will be parked on site in the school car park.

Traffic on Suttor Street during work hours may be delayed due to large vehicle movements. We apologise in advance for any inconvenience.

Traffic controllers will be used for the safety of the community when the concrete is poured and steel is brought to the site. Please follow the directions of any temporary signage and traffic controllers when in place.

Please be aware there will be an increase in noise during these works, especially when the concrete is cut. We will make every effort to minimise noise where possible.

For more information on how construction impacts will be managed, visit the School Infrastructure website [Managing construction impacts in your community \(nsw.gov.au\)](https://www.schoolinfrastructure.nsw.gov.au).



If you have any questions about this work, please contact the NSW Department of Education on the details below.

The health, safety, and wellbeing of the school and the local community is our highest priority.

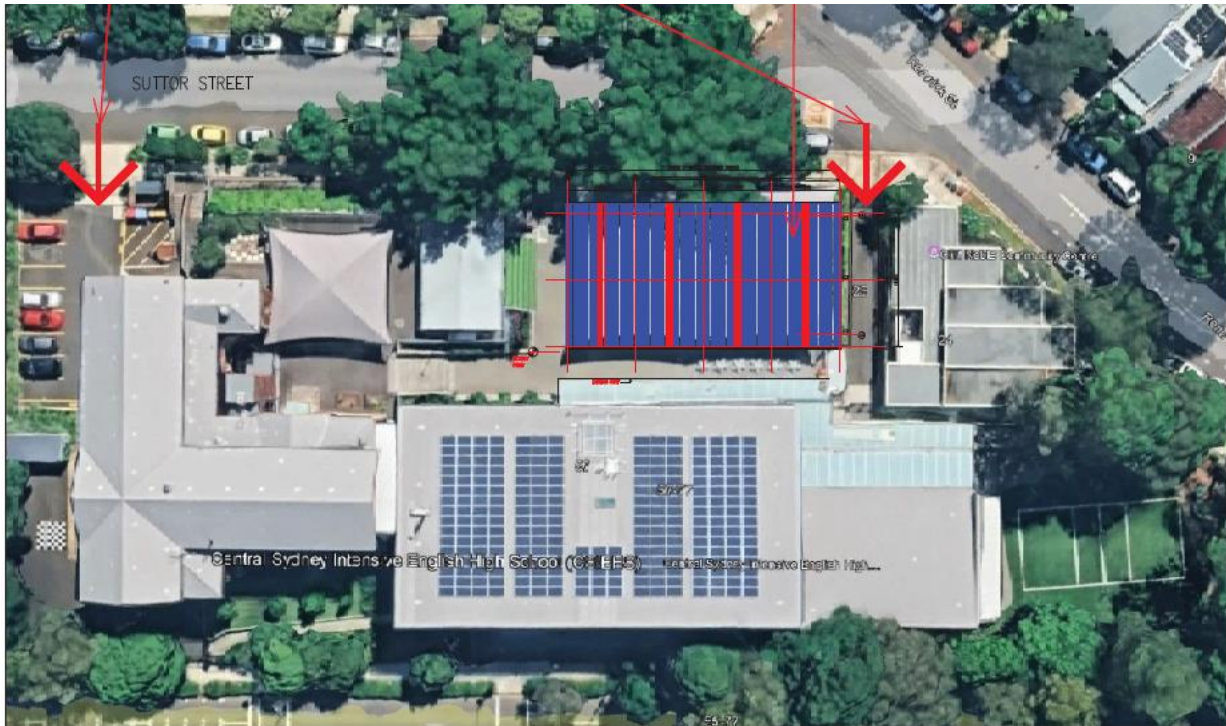


Image: Two vehicle access points and shade structure location at Central Sydney Intensive English High School.

Thank you for your cooperation during this important work.