

# Wiripaang Public School Project update | February 2026

Image caption: artist impression showing external view of the hall (subject to change)



## Investing in our schools

The \$284.3 million [Australian Government Schools Upgrade Fund](#) is delivering grants to improve school facilities across the country.

These grants are designed to help schools and their students get back on track after disruptions caused by COVID-19. Public Schools in NSW have a \$68 million share of the fund for infrastructure projects and facility improvements.

As part of this investment, Wiripaang Public School is receiving a new hall to be located on the northwestern side of the school, between the covered outdoor learning area (COLA), canteen (Building F) and library (Building E).

## Progress update

Further to the [December 2025 project update](#), we are pleased to announce that construction of the new hall has been awarded to P.D.A Custom Constructions Pty Ltd.

Construction began on Thursday 5 February 2026 and is expected to be finished by mid-2026. During this time, the project area will be fenced off within a construction zone. Access to the nearby canteen and library will be available for use as usual.

Access to the adjacent COLA will be unavailable during the project to enable construction, plumbing and electrical works. Alternative shared outdoor areas are available to use in the centre quadrangle during this time.



Email: [schoolinfrastructure@det.nsw.edu.au](mailto:schoolinfrastructure@det.nsw.edu.au)  
Phone: 1300 482 651  
[schoolinfrastructure.nsw.gov.au](http://schoolinfrastructure.nsw.gov.au)

## What to expect during construction

Work hours will be 7 am to 6 pm Monday to Friday and 8 am to 1 pm on Saturdays. No work will take place on Sundays or public holidays.



Scan QR code to  
visit construction  
impacts webpage

Contractor vehicles will use the Hughes Street access road.

There may be some noise while work is taking place.

We are committed to managing noise in line with regulatory requirements and will make every effort to ensure works are carried out safely and efficiently with minimal disruption to the community.

For more information on how we manage construction impacts, please scan the QR code or visit our webpage at [edu.nsw.link/ConstructionImpacts](https://edu.nsw.link/ConstructionImpacts).

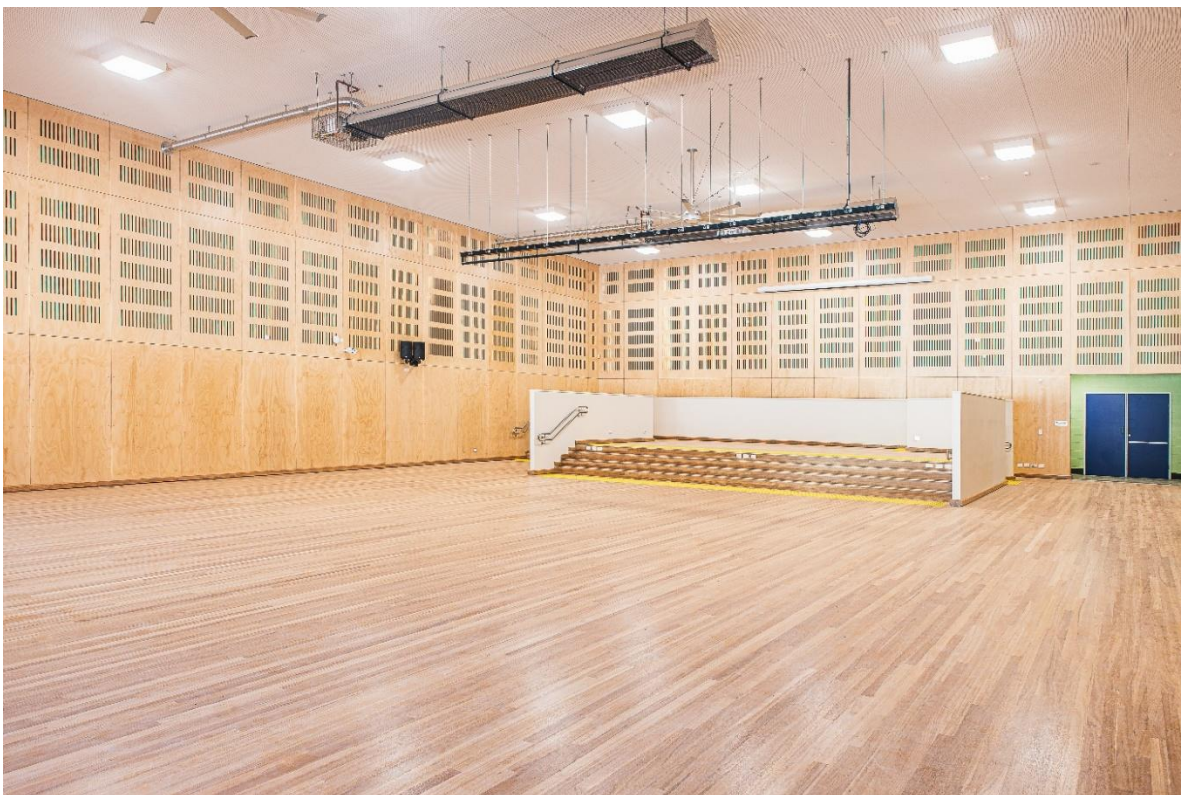
## More information

If you have any questions about this work, please contact the NSW Department of Education on the details below.

You can find more information about infrastructure works at Wiripaang Public School, including past updates about this project, visit our webpage at [edu.nsw.link/wiripaang-ps](https://edu.nsw.link/wiripaang-ps) or scan the QR code.



Thank you for your understanding during this important work.



**Image above:** example of a hall at a NSW public school.