

# Rouse Hill Public School

## Works notification | 16 December 2025

Dear staff, parents and carers,

The health, safety and wellbeing of all members of our school and the local community remains front of mind during this difficult time.

To keep you informed as the end of the school year approaches, here is an update on road safety and traffic control since our [24 November notification](#).

### Road safety survey

Thank you to the members of our school community who provided feedback on the road safety survey.

Responses relevant to The Hills Shire Council have been shared with council for consideration. The council will follow up in the new year. School staff will continue to liaise with both council and the NSW Department of Education regarding other suggestions.

### Traffic control

The interim measure of having traffic control supervisors at the school carpark and the Community Centre carpark, resourced by the NSW Department of Education, will be in place until the end of Term 4, 2025. By Term 1, 2026, other safety enhancements such as the fencing modifications will be finished.

### Community Centre carpark

The Hills Shire Council asks that users of the Community Centre carpark:

- park in marked bays only
- do not use the carpark as a Kiss and Drop.

### Fencing modifications

Your feedback helped inform several safety enhancements to improve visibility for drivers and pedestrians entering and exiting the school. This includes installing Transport for NSW-approved fencing next to the pedestrian crossing to encourage appropriate use of the Kiss and Drop zone.

We are pleased to advise that these fencing modifications fronting Clower Avenue are progressing ahead of schedule. These works are expected to finish around the end of December.

Safety measures, including temporary fencing, are in place while work is being done.

Construction takes place between 7 am and 6 pm, Monday to Friday and 8 am and 1 pm on Saturdays. No work will take place on Sundays or public holidays.

The Outside of School Hours (OOSH) care operates as usual during the school holidays.

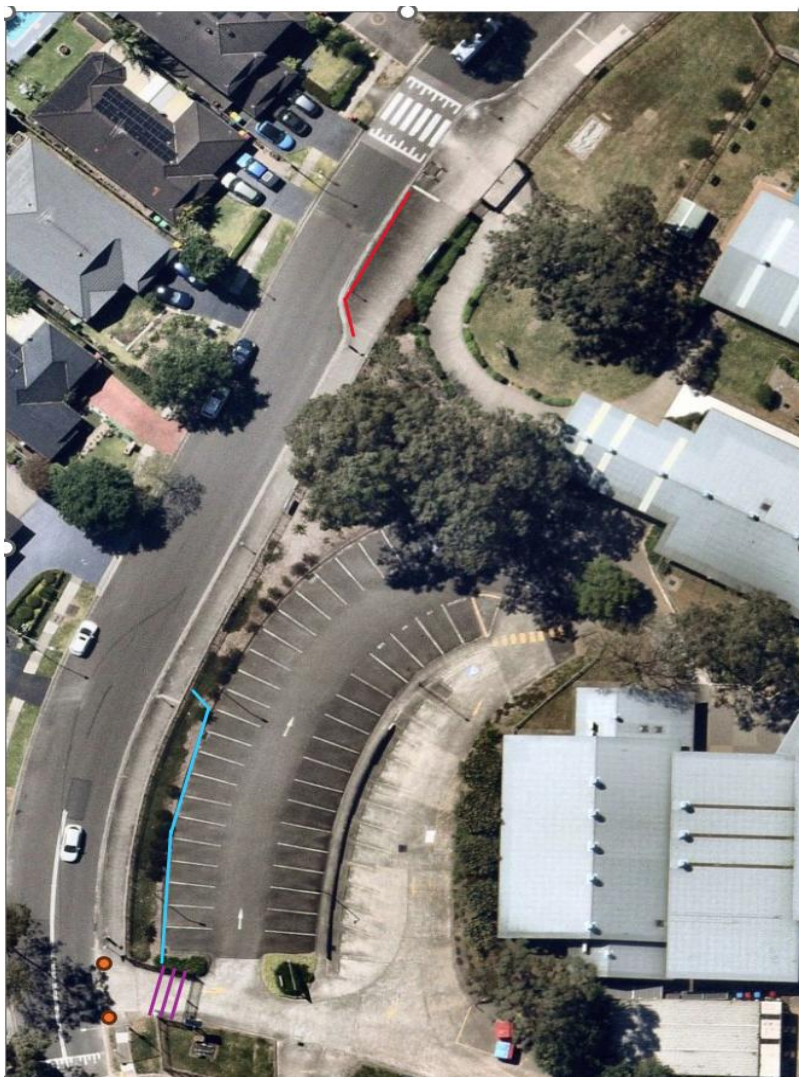
Thank you for your understanding and cooperation during this important work.



Email: [schoolinfrastructure@det.nsw.edu.au](mailto:schoolinfrastructure@det.nsw.edu.au)  
Phone: 1300 482 651  
[schoolinfrastructure.nsw.gov.au](http://schoolinfrastructure.nsw.gov.au)



### Location of road safety enhancements at Rouse Hill Public School



**Key**

- new fencing along Kiss and Drop boundary
- relocation of existing fence
- new convex mirrors
- raised road markings