



Artist impression of the new Empire Vale Public School entry

Empire Vale Public School

Information pack | August 2023

Empire Vale Public School suffered extensive damage during the 2022 flood events with flood water entering the school and damaging classrooms, the administration area, library, playgrounds, oval and toilets.

The Department of Education has committed to rebuilding the school and delivering core facilities including classrooms, new administration facilities, library, underneath play areas and toilets on the first and ground levels. The heritage building will be renovated and be available for school and community use. The project will deliver:



New permanent classrooms



New library



New play space



New administration area



New school entry



New canteen



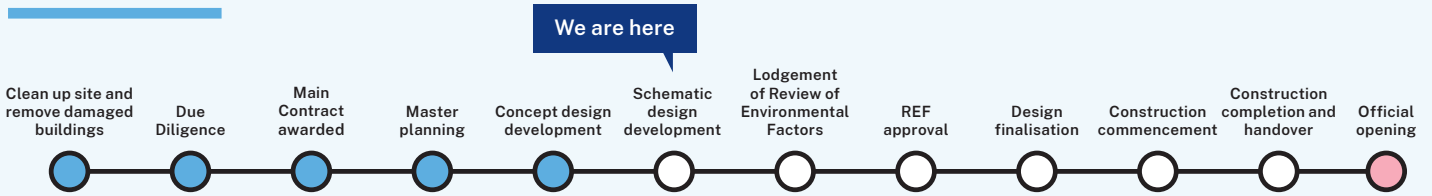
Artist impression of outdoor learning space.

Planning process

Empire Vale Public School is expected to be completed in 2024. Construction times will depend on weather, planning approvals and access to trades and resources.

Below is the process and timeline.

Timeline



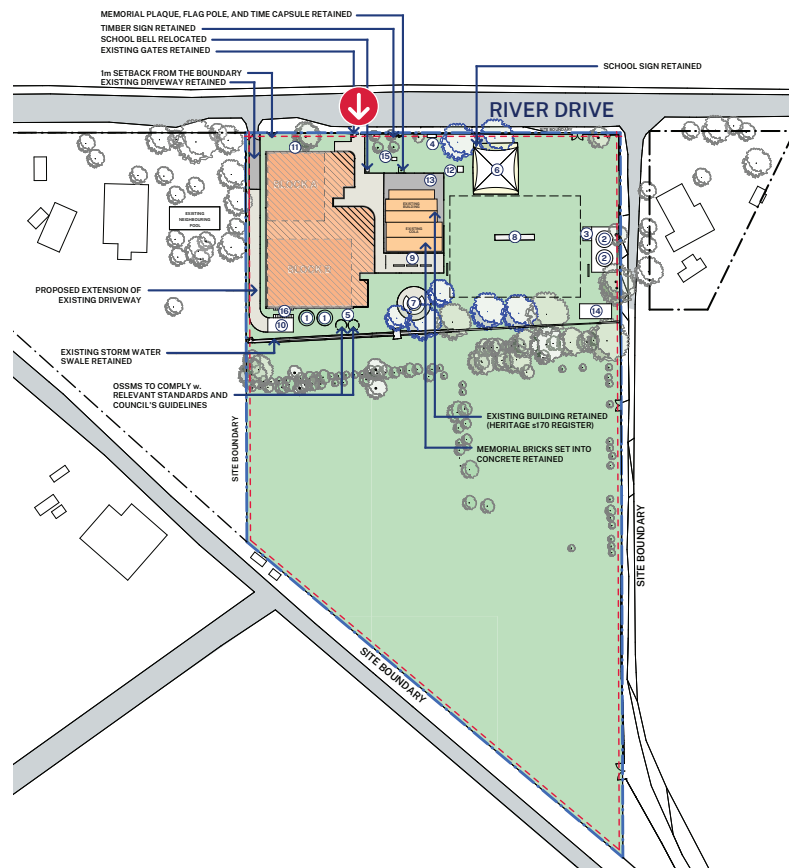
Masterplan update

A masterplan is the first stage of the design phases, followed by concept design, schematic design then final detailed design.

The proposed masterplan considers the current site conditions and potential future needs for the school. It is informed by the department’s Educational Facilities, Standards and Guidelines (EFSG) and considers factors unique to Empire Vale Public School such as heritage, flood maps, location, and ecosystem.

This masterplan is subject to amendment during the next stages of design and statutory planning approvals.

LEGEND			
	Existing Building to be retained		Proposed hydrant booster assembly and external fire hydrant
	Existing Paving to be retained		Underground septic tanks
	Proposed Building		Replacement sanded area and play equipment
	Proposed Paving refer to landscape architect’s drawing landscape		Proposed yarning circle, refer to landscape architect’s drawings
	Existing trees to be retained refer to landscape architect’s drawing		Existing cricket pitch retained
	Proposed new trees shown in blue outline refer to landscape architect’s drawings		Proposed outdoor seating
	Existing neighboring trees indicative only		Proposed NEW GA shed
	Site Boundary		Garden beds retained
	Main Entry		Memorial plaque
	Rainwater tanks		Existing paving retained
	Fire tanks		Relocated shipping container
	Hydrant pump house		Dual fire hydrant
			Waste management area



*Note: Final design and landscaping (subject to change).

Student centred design

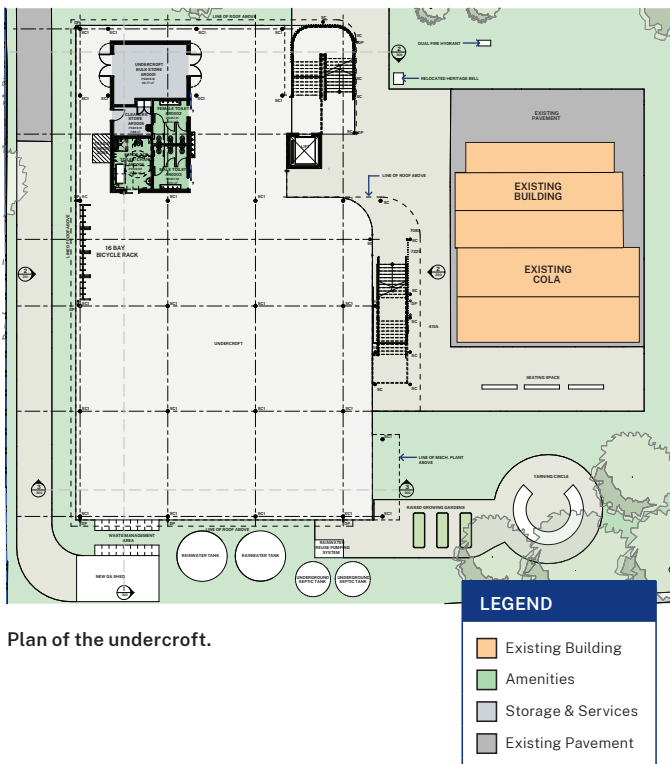
The upgrade for Empire Vale Public School will provide new and improved learning spaces and new facilities that can be shared with the broader community, while improving flood resilience.

The planning and delivery of all our new and upgraded schools are guided by the Education Facilities Standards and Guidelines (EFSG). The aim of the EFSG is to provide students with the best possible facilities to support their learning and well-being.

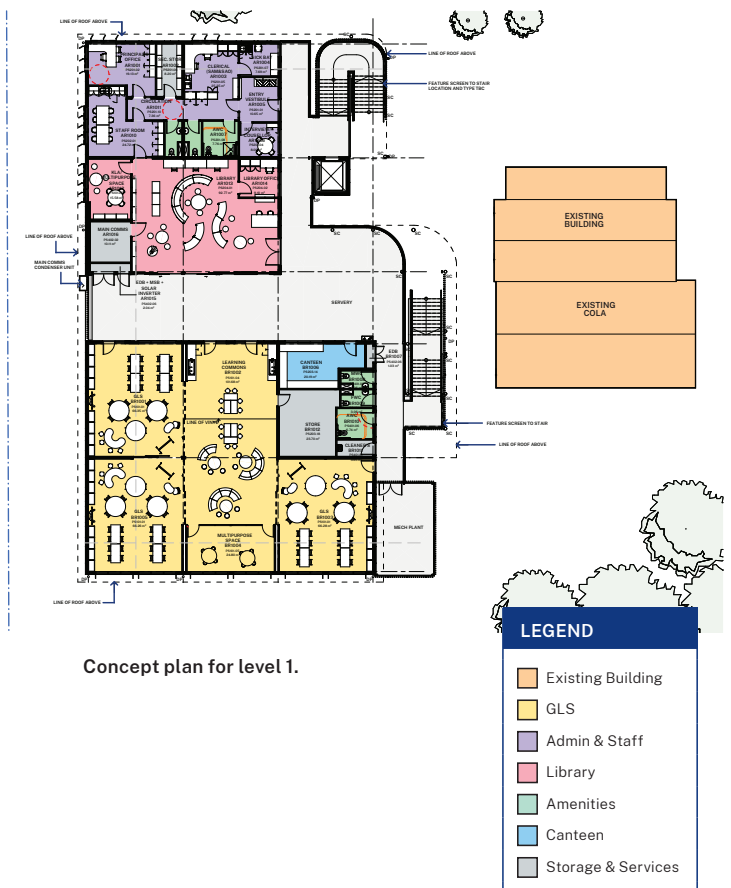
Learning spaces are designed with the entire student experience in mind and includes open active spaces, indoor and outdoor learning spaces, and core facilities such as a school library and canteen as well as administration areas.

Open play and active spaces are key factors as we determine classroom sizes, indoor and outdoor learning areas, landscaping and play equipment. Building heights have been determined in consultation with Council.

These new facilities are being planned to provide the students at Empire Vale Public School with sufficient spaces to learn and play for years to come.



Plan of the undercroft.



Concept plan for level 1.

*These plans are subject to amendment during the planning and approval process.



Aerial artist impression of the new Empire Vale Public School (subject to change)

Review of Environmental Factors

Following the design phase a Review of Environmental Factors (REF) for the building will be lodged with stakeholders.

A REF is an environmental assessment used to determine whether an activity should be approved by considering all matters that affect or may affect the environment. This can include technical reports prepared by industry specialists, including Ecological Assessments, Aboriginal and European Heritage Assessment Reports, Contaminated Lands, Noise and Vibration, Visual and Amenity, Traffic and Transport to address the specific details required for the project approval.

Progress summary and next steps

The concept, schematic plans, and colour schemes will be finalised in early September.

The building contractor will work with School Infrastructure NSW to determine a timeline for the demolition, building and any staging requirements.

We will keep the community updated on the progress of the planning applications as they are lodged. The community will be able to provide further feedback as the building process continues.

Stay informed



Website

Stay up to date by visiting the School Infrastructure NSW website
schoolinfrastructure.nsw.gov.au



Email

Contact the Community Engagement team by emailing
schoolinfrastructure@det.nsw.edu.au



Phone

Contact us between 9 am and 5 pm, Monday to Friday on **1300 482 651**

