

# Project overview

Broadwater Public School suffered extensive damage during the 2022 flood events with flood water entering the school and damaging classrooms, the administration area, library, playgrounds, oval and toilets.

The Department of Education has committed to rebuild the school and deliver core facilities including classrooms, new administration facilities, library, underneath play areas and toilets on the first and ground levels.



New permanent classrooms



New library



New play space



New administration area



New school entry



New canteen

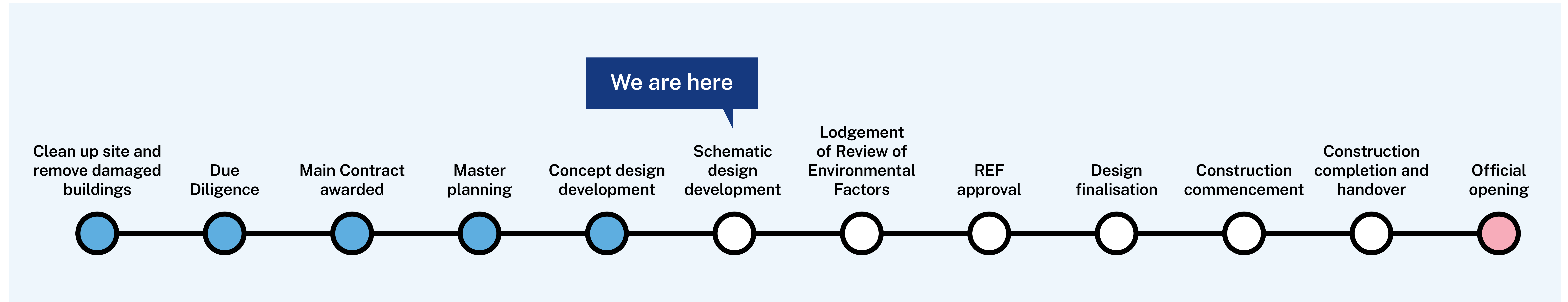


Aerial artist impression of Broadwater Public School (subject to change).

## Broadwater Public School

For more information phone: 1300 482 651  
Email: [schoolinfrastructure@det.nsw.edu.au](mailto:schoolinfrastructure@det.nsw.edu.au)  
[schoolinfrastructure.nsw.gov.au](http://schoolinfrastructure.nsw.gov.au)

# Project timeline



## What's next?

Concept, schematic plans and colour schemes will be finalised in early September. Then a Review of Environmental Factors (REF) for the build will be lodged with stakeholders.

A REF is an environmental assessment used to determine whether an activity should be approved by taking into account all matters that affect or may affect the environment. This can include technical reports prepared by industry specialists, including Ecological Assessments, Aboriginal and European Heritage Assessment Reports, Contaminated Lands, Noise and Vibration, Visual and Amenity, Traffic and Transport to address the specific details required for the project approval.

The building contractor will work with School Infrastructure NSW to determine a timeline for the demolition, building and any staging requirements.

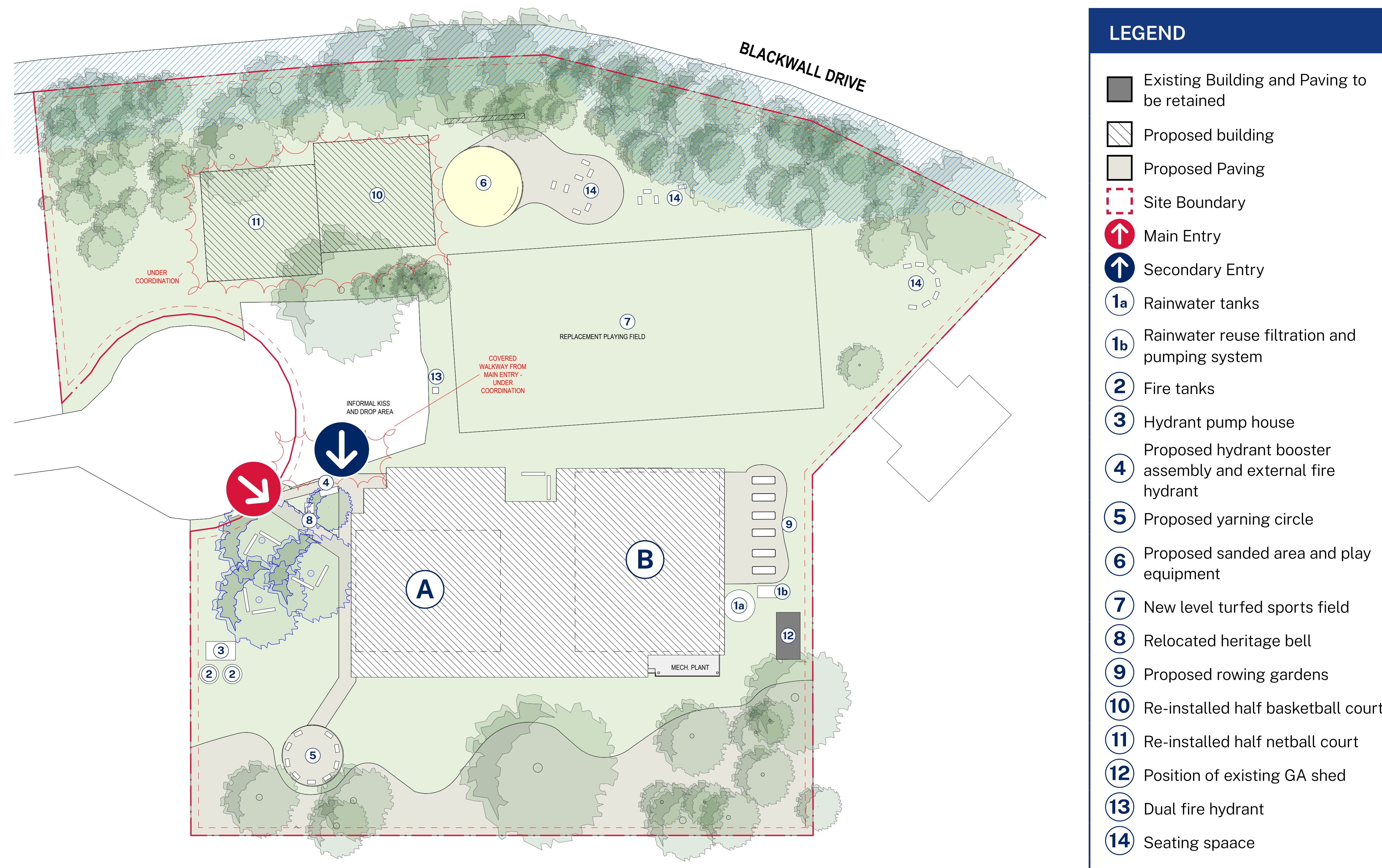
We look forward to sharing more information with you as the project progresses. You can stay informed by regularly visiting the project web page and you can contact us via email or phone if you have any questions or feedback about the Broadwater Public School Flood Recovery Project.

## Broadwater Public School

For more information phone: 1300 482 651  
Email: [schoolinfrastructure@det.nsw.edu.au](mailto:schoolinfrastructure@det.nsw.edu.au)  
[schoolinfrastructure.nsw.gov.au](http://schoolinfrastructure.nsw.gov.au)

# Broadwater Master Plan and aerial view

The layout of the new school maximises the play space and sits carefully amongst the trees and landscape capturing beautiful views and taking advantage of the solar aspect and the breeze.



LEGEND	
	Existing Building and Paving to be retained
	Proposed building
	Proposed Paving
	Site Boundary
	Main Entry
	Secondary Entry
	Rainwater tanks
	Rainwater reuse filtration and pumping system
	Fire tanks
	Hydrant pump house
	Proposed hydrant booster assembly and external fire hydrant
	Proposed yarning circle
	Proposed sanded area and play equipment
	New level turfed sports field
	Relocated heritage bell
	Proposed rowing gardens
	Re-installed half basketball court
	Re-installed half netball court
	Position of existing GA shed
	Dual fire hydrant
	Seating space



Aerial artist impression of Broadwater Public School (subject to change).

\*Note: Final design and landscaping subject to approval and next stages of design.

## Broadwater Public School

For more information phone: 1300 482 651  
 Email: [schoolinfrastructure@det.nsw.edu.au](mailto:schoolinfrastructure@det.nsw.edu.au)  
[schoolinfrastructure.nsw.gov.au](http://schoolinfrastructure.nsw.gov.au)

# Broadwater Public School Flood Resilient Design

The façade of the new Broadwater Public School has been designed to be respectful of the local environment, visually appealing while embedding the colours of country and community into the materials and finishes.

The school is being built above the flood requirements to ensure that if there are any future floods, the impact will be minimal.

The area under the building (undercroft) will be used as an outdoor play area and classroom.

The Love Tree is central to the layout and is visible from the space between the classrooms and the library. Retaining the tree is a key focal point for the school and community.

The images here are artist's impressions only. Final colour and landscaping is subject to change through final design stages and landscaping.



Artist impression from playing fields (subject to change).



Artist impression from growing gardens perspective (subject to change).

## Broadwater Public School

For more information phone: 1300 482 651  
Email: [schoolinfrastructure@det.nsw.edu.au](mailto:schoolinfrastructure@det.nsw.edu.au)  
[schoolinfrastructure.nsw.gov.au](http://schoolinfrastructure.nsw.gov.au)



# Broadwater Public School undercroft floor plan

The layout of the multipurpose undercroft (under the 1st floor) is designed to maximise the use of space for the school and wider community.

The undercroft will be the ideal location for waiting for buses, games out of the sun and rain, and assemblies.

The undercroft capacity will have adequate capacity for school and community meetings.

Male, female and accessible toilets are located in the undercroft.

Storage and cleaner facilities are also located here.



Undercroft Plans (subject to change).

## Broadwater Public School

For more information phone: 1300 482 651  
Email: [schoolinfrastructure@det.nsw.edu.au](mailto:schoolinfrastructure@det.nsw.edu.au)  
[schoolinfrastructure.nsw.gov.au](http://schoolinfrastructure.nsw.gov.au)

# Broadwater Public School

## Classrooms, library, administration and upstairs facilities



Level 1 Concept Plans (subject to change).

## Broadwater Public School

For more information phone: 1300 482 651  
Email: [schoolinfrastructure@det.nsw.edu.au](mailto:schoolinfrastructure@det.nsw.edu.au)  
[schoolinfrastructure.nsw.gov.au](http://schoolinfrastructure.nsw.gov.au)

# How standardised learning hub layouts work in practice

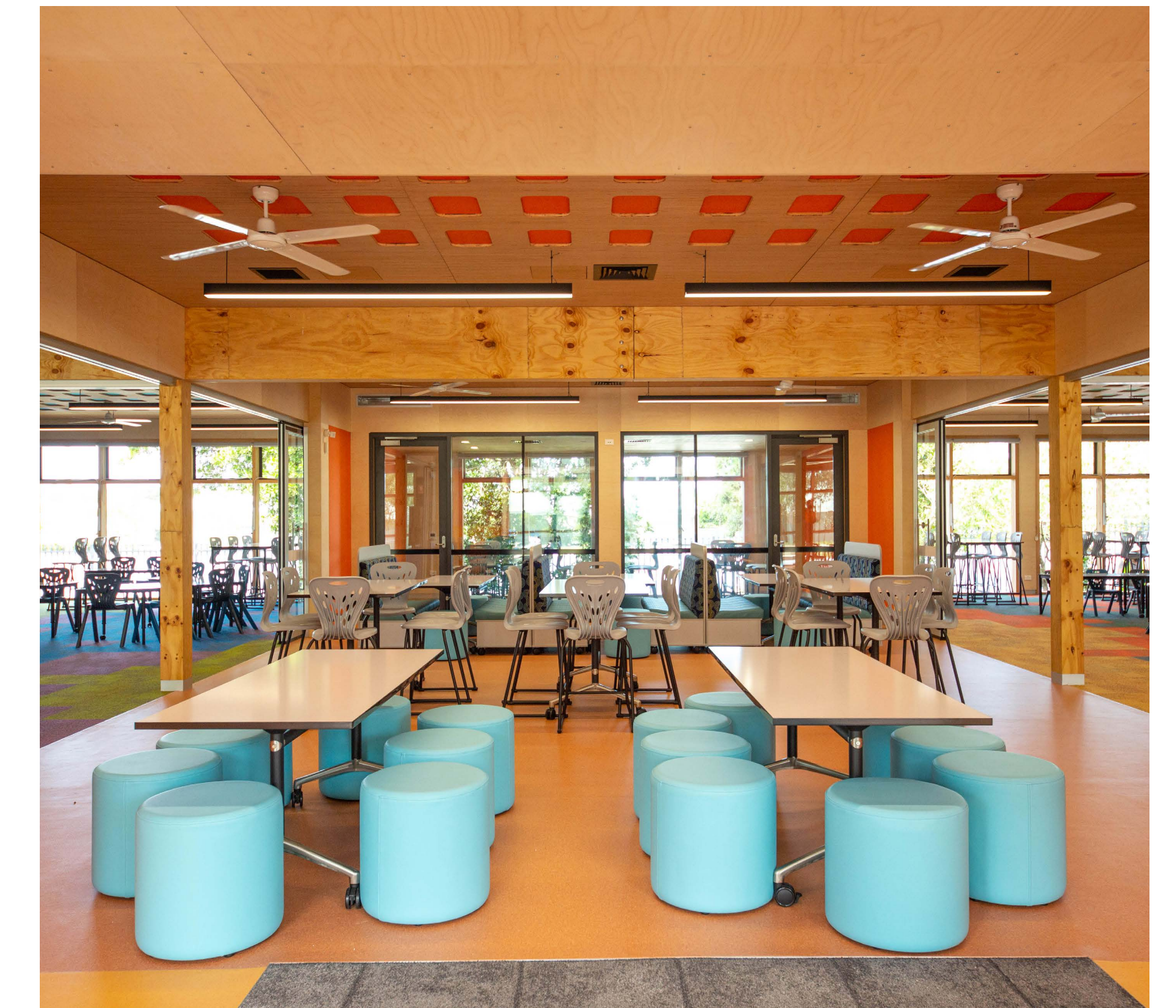
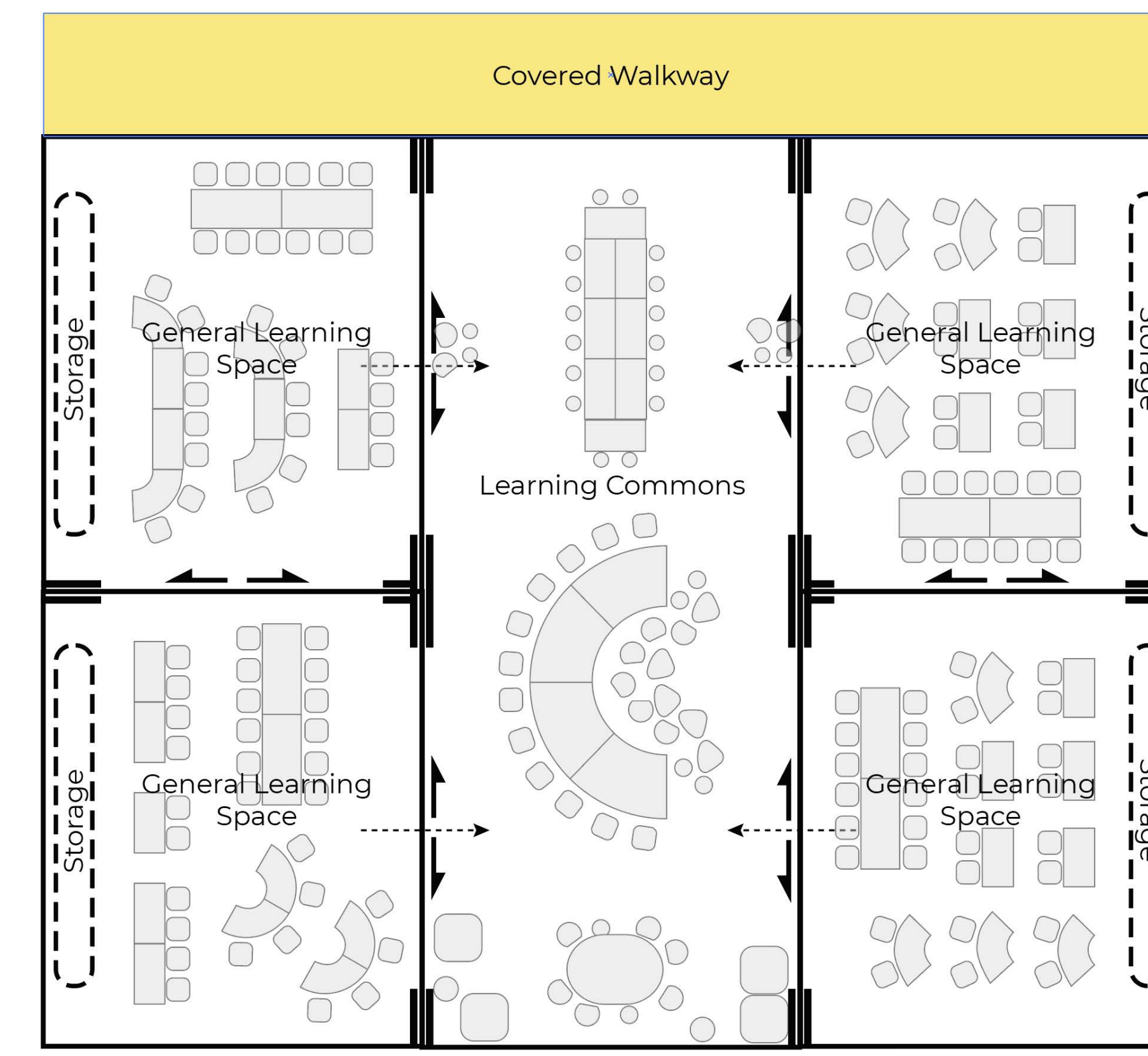
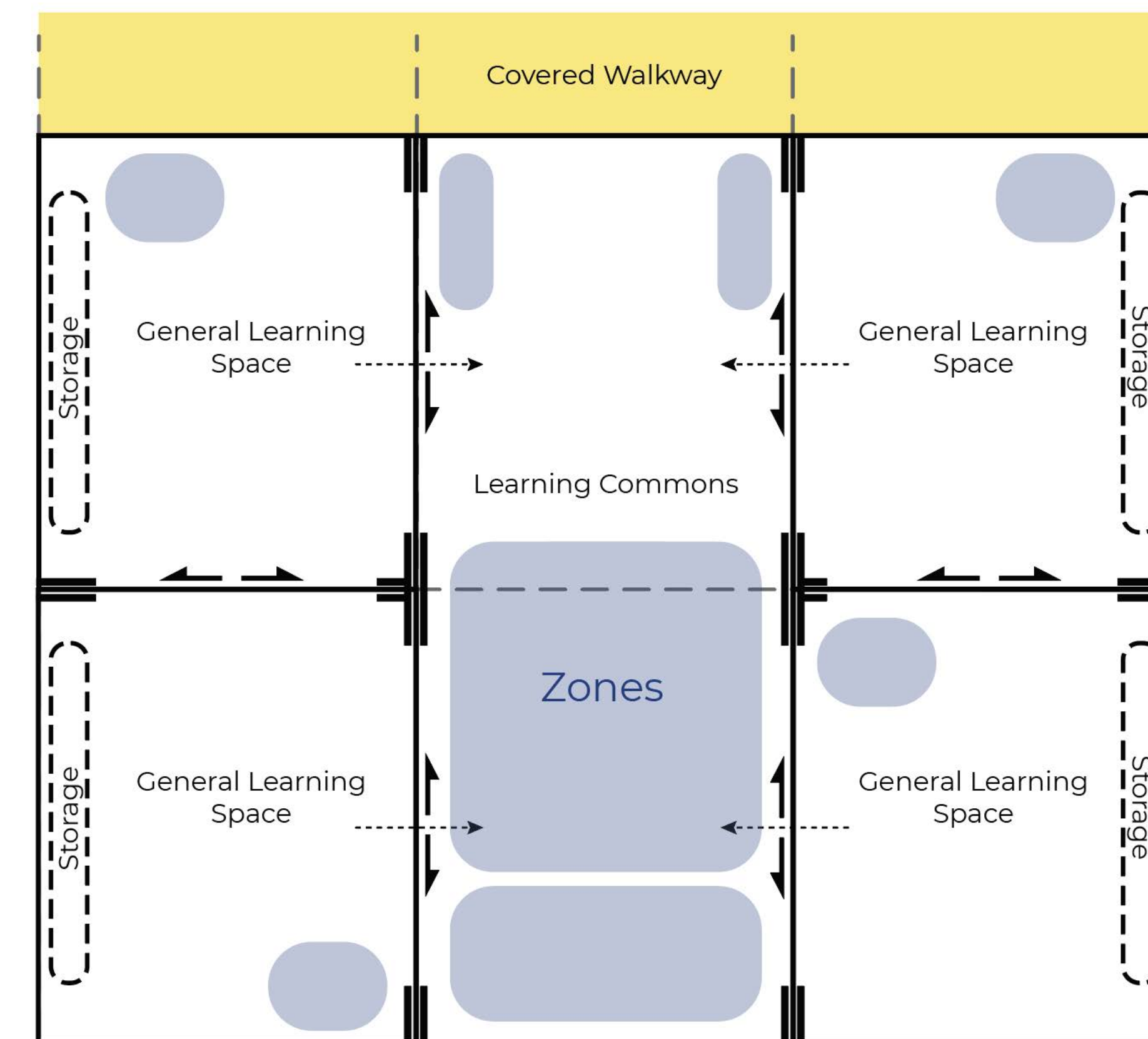
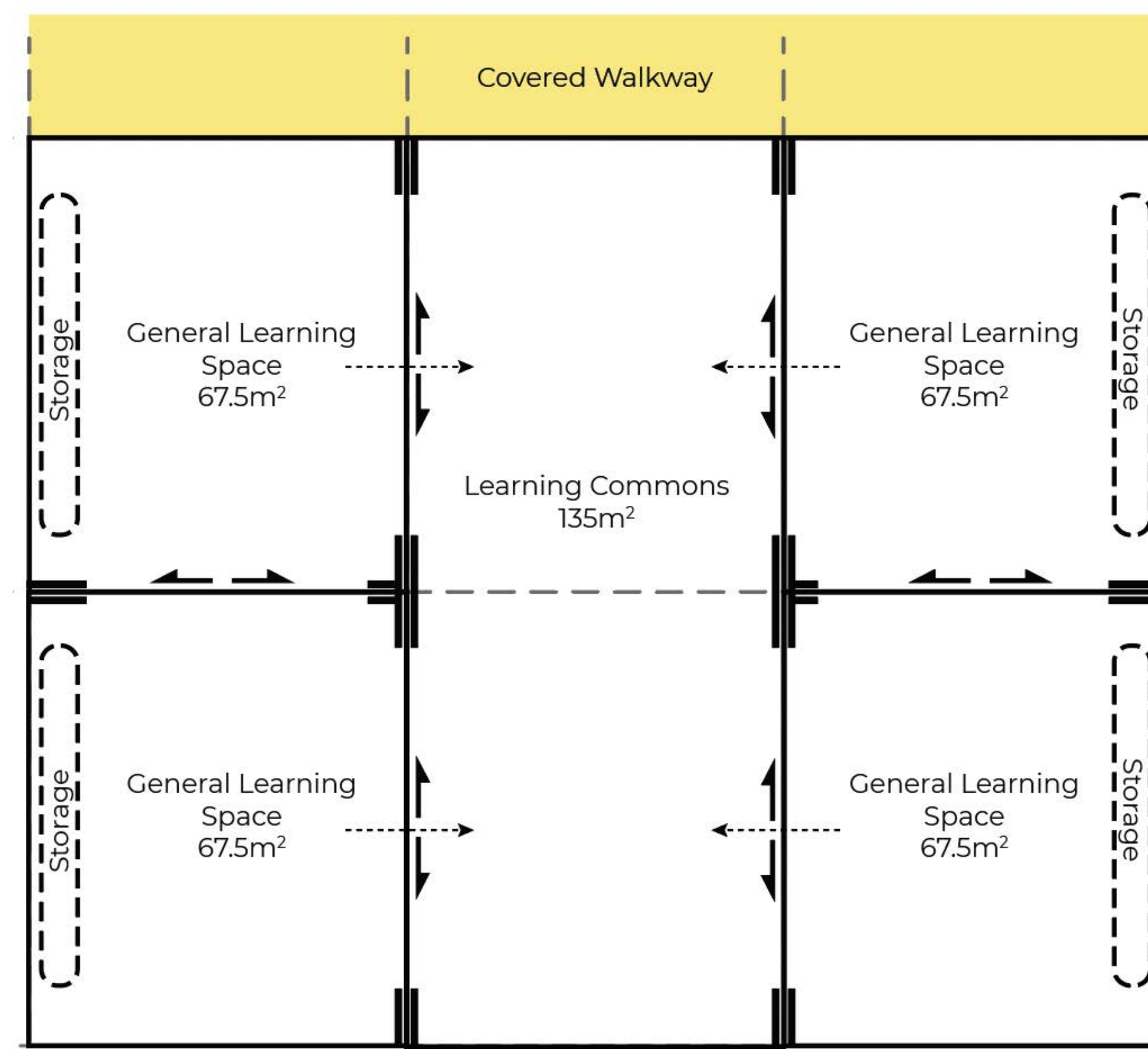


Standardised design for a school learning hub, featuring 4 learning spaces and a learning commons.

The design is modified to suit the school context outlined in the education rationale. Schools can include practical activity areas (PAAs), STEM spaces or other multi-purpose spaces (MPSs) that support collaboration, preparation or sensory needs.

Furniture settings are selected to align to local teaching and learning requirements. Furniture selection is supported by professional learning and other resources.

From a 2D plan to a flexible learning space, ready for students to engage in their learning activities.



## Broadwater Public School

For more information phone: 1300 482 651  
Email: [schoolinfrastructure@det.nsw.edu.au](mailto:schoolinfrastructure@det.nsw.edu.au)  
[schoolinfrastructure.nsw.gov.au](http://schoolinfrastructure.nsw.gov.au)

# Consultation and keeping your school community informed

School Infrastructure NSW adopts a consistent and strategic approach to general community communications and engagement across all of our projects.

We are committed to engaging with all stakeholders, including the local community, through the entire project lifecycle; from planning, design and delivery to operations and maintenance.

Examples of when we will consult, communicate and engage with the school community while the project is underway may include:



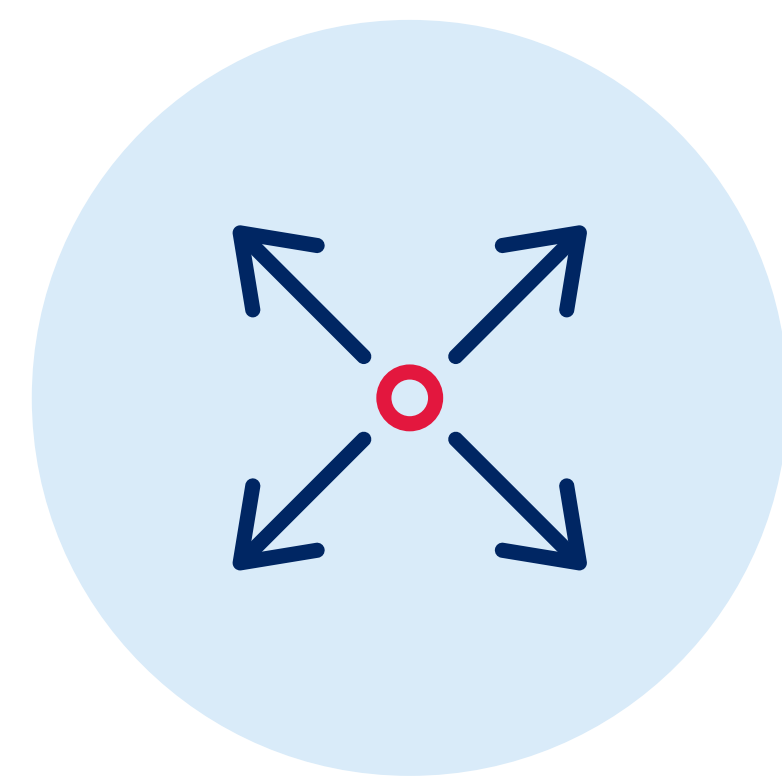
**Engagement of consultants and contractors**



**Construction milestones**



**School design**



**Potential school or local community impacts**

School Infrastructure NSW will continue to share information with the school community as work progresses, by posting project updates on the website.

We thank you for all your patience during this important program of work.

## Stay informed



### Website

Stay up to date by visiting the School Infrastructure NSW website [schoolinfrastructure.nsw.gov.au](http://schoolinfrastructure.nsw.gov.au)



### Email

Contact the Community Engagement team by emailing [schoolinfrastructure@det.nsw.edu.au](mailto:schoolinfrastructure@det.nsw.edu.au)



### Phone

Contact us between 9 am and 5 pm, Monday to Friday on **1300 482 651**

## Broadwater Public School

For more information phone: 1300 482 651  
Email: [schoolinfrastructure@det.nsw.edu.au](mailto:schoolinfrastructure@det.nsw.edu.au)  
[schoolinfrastructure.nsw.gov.au](http://schoolinfrastructure.nsw.gov.au)