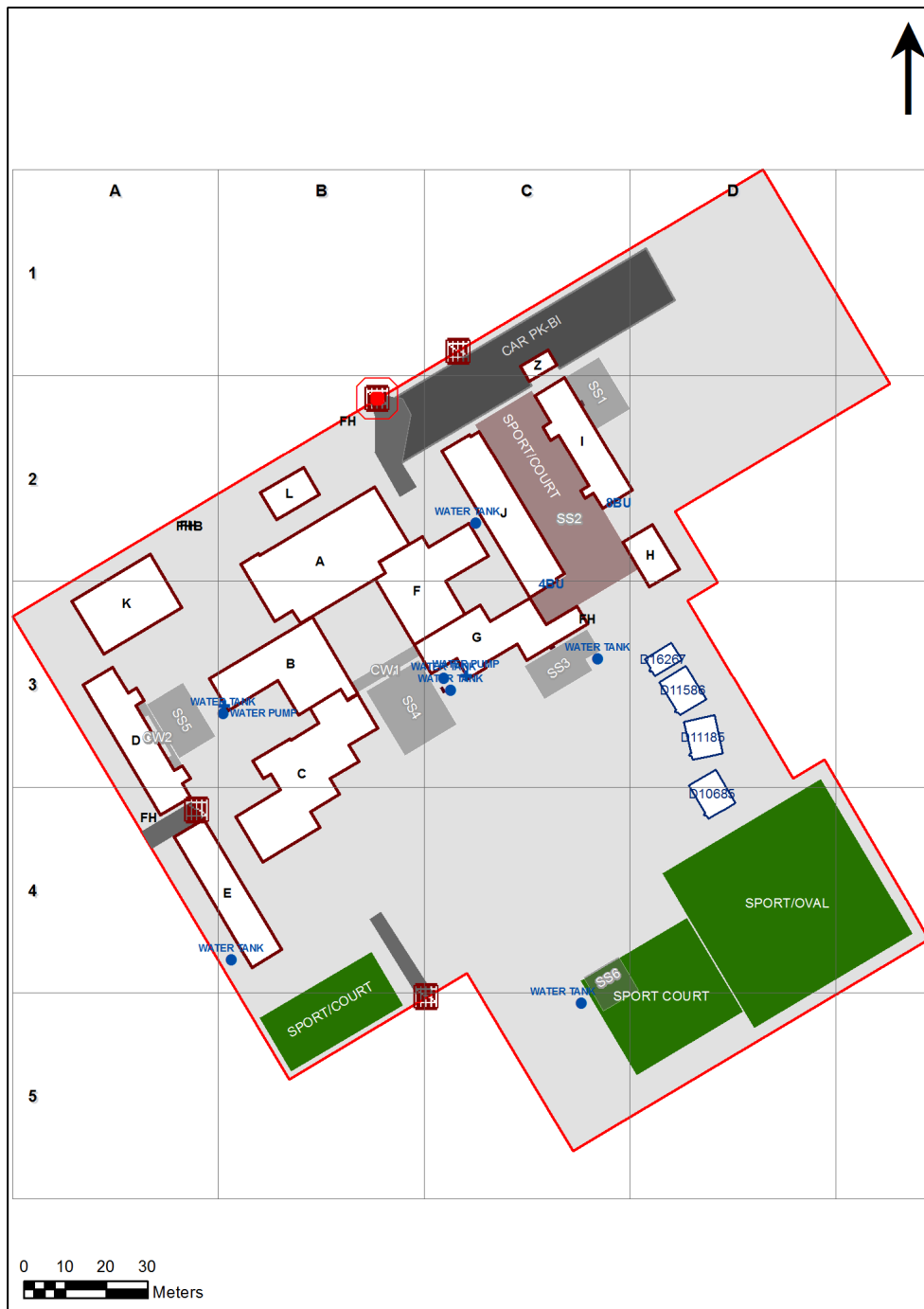


VENTILATION AUDIT REPORT

SCHOOL:	Rooty Hill Public School (4056)
AMU REGION:	Western Sydney
STATE ELECTORATE:	Mount Druitt
LOCAL GOVERNMENT AREA:	Blacktown

4056 - Rooty Hill Public School
Site Plan (10591)



1:1,154

Printed: 21-Mar-2020

Ventilation Audit Key

Category	Description
	Category A Operate this space in line with COVID safe school operations . It has the required level of natural ventilation. NB. Circulation and storage areas should not be used for groups or gatherings.
	Category B This space should be occupied at 1 person per 4m ² to comply with COVID safe school operations and the guided use of spaces . The report details the number of people who can be accommodated safely in each of the identified spaces.

Entity Location	Audit Condition Classification (Capacity)	Comment
B00A - R0004 - Movement - (7.15 SQM)	Not Applicable	Circulation or storage space.
B00A - R0007 - Movement - (12.27 SQM)	Not Applicable	Circulation or storage space.
B00A - R0010 - Communal Space - (257.3 SQM)	● Student Space (119)	
B00A - R0012 - Movement - (5.01 SQM)	Not Applicable	Circulation or storage space.
B00A - R0013 - Raised Platform - (27.37 SQM)	Not Applicable	Circulation or storage space.
B00A - R0014 - Movement - (5.01 SQM)	Not Applicable	Circulation or storage space.
B00A - R0016 - Movement - (57.81 SQM)	Not Applicable	Circulation or storage space.
B00A - R0017 - Movement - (72.29 SQM)	Not Applicable	Circulation or storage space.
B00A - R0027 - Canteen - (50.93 SQM)	Not Applicable	Circulation or storage space.
B00B - R0006 - Movement - (9.89 SQM)	Not Applicable	Circulation or storage space.
B00B - R0012 - Reading Area - (162.93 SQM)	● Student Space (75)	
B00B - R0013 - Movement - (64.13 SQM)	Not Applicable	Circulation or storage space.
B00B - R0014 - Reading Area - (92.18 SQM)	● Student Space (42)	
B00C - R0001 - Practical Activities - 1hb - (9.45 SQM)	● Student Space (4)	
B00C - R0002 - Home Base - (59.31 SQM) - Teaching Space: 1	● Student Space (27)	
B00C - R0004 - Practical Activities - 1hb - (9.44 SQM)	● Student Space (4)	
B00C - R0005 - Home Base - (59.31 SQM) - Teaching Space: 1	● Student Space (27)	
B00C - R0007 - Practical Activities - 1hb - (9.44 SQM)	● Student Space (4)	
B00C - R0008 - Home Base - (59.31 SQM) - Teaching Space: 1	● Student Space (27)	
B00C - R0011 - Home Base - (64.69 SQM) - Teaching Space: 1	● Student Space (30)	
B00C - R0013 - Home Base - (63.77 SQM) - Teaching Space: 1	● Student Space (29)	
B00C - R0016 - Movement - (152.18 SQM)	Not Applicable	Circulation or storage space.
B00D - R0001 - Home Base - (57.01 SQM) - Teaching Space: 1	● Student Space (26)	
B00D - R0004 - Movement - (15.16 SQM)	Not Applicable	Circulation or storage space.
B00D - R0006 - Home Base - (56.39 SQM) - Teaching Space: 1	● Student Space (26)	
B00D - R0009 - Special Programs Room - (15.81 SQM)	● Student Space (7)	
B00D - R0011 - Home Base - (56.39 SQM) - Teaching Space: 1	● Student Space (26)	
B00D - R0014 - Movement - (11.96 SQM)	Not Applicable	Circulation or storage space.
B00D - R0018 - Deputy Principal - (14.01 SQM)	● Office (3)	
B00E - R0001 - Home Base - (56.65 SQM) - Teaching Space: 1	● Student Space (26)	
B00E - R0005 - Movement - (5.84 SQM)	Not Applicable	Circulation or storage space.
B00E - R0009 - Home Base - (56.65 SQM) - Teaching Space: 1	● Student Space (26)	
B00E - R0010 - Home Base - (56.65 SQM) - Teaching Space: 1	● Student Space (26)	
B00E - R0014 - Movement - (5.8 SQM)	Not Applicable	Circulation or storage space.
B00E - R0017 - Home Base - (56.65 SQM) - Teaching Space: 1	● Student Space (26)	
B00F - R0001 - Deputy Principal - (12.97 SQM)	● Office (3)	
B00F - R0003 - Principal - (21.61 SQM)	● Office (5)	
B00F - R0004 - Clerical Office/Workroom - (12.54 SQM)	● Office (3)	
B00F - R0005 - Clerical Office - (12.57 SQM)	● Office (3)	
B00F - R0006 - Staff Room - (78.1 SQM)	● Office (19)	
B00F - R0008 - Duplicating Workroom - (12.97 SQM)	● Office (3)	
B00F - R0011 - Sick Bay - (10.38 SQM)	● Student Space (4)	
B00F - R0012 - Movement - (13.15 SQM)	Not Applicable	Circulation or storage space.
B00F - R0014 - Movement - (11.03 SQM)	Not Applicable	Circulation or storage space.
B00F - R0015 - Clerical Office/Workroom - (12.61 SQM)	● Office (3)	
B00F - R0019 - Movement - (39.69 SQM)	Not Applicable	Circulation or storage space.
B00F - R0020 - Movement - (67.12 SQM)	Not Applicable	Circulation or storage space.
B00F - R0023 - Entry Vestibule - (17.71 SQM)	Not Applicable	Circulation or storage space.
B00G - R0004 - Practical Activities - 1hb - (13.85 SQM)	● Student Space (6)	

Entity Location	Audit Condition Classification (Capacity)	Comment
B00G - R0005 - Home Base - (55.17 SQM) - Teaching Space: 1	● Student Space (25)	
B00G - R0009 - Practical Activities - 1hb - (27.31 SQM)	● Student Space (12)	
B00G - R0010 - Home Base - (41.35 SQM) - Teaching Space: 1	● Student Space (19)	
B00G - R0014 - Movement - (103.47 SQM)	Not Applicable	Circulation or storage space.
B00H - R0002 - Practical Activities - 1hb - (16.07 SQM)	● Student Space (7)	
B00H - R0003 - Home Base - (74.13 SQM) - Teaching Space: 1	● Student Space (34)	
B00I - R0001 - Practical Activities - 1hb - (11.19 SQM)	● Student Space (5)	
B00I - R0003 - Home Base - (84.59 SQM) - Teaching Space: 1	● Student Space (39)	
B00I - R0005 - Home Base - (84.2 SQM) - Teaching Space: 1	● Student Space (39)	
B00I - R0006 - Practical Activities - 1hb - (28.6 SQM)	● Student Space (13)	
B00J - R0001 - Staff Room Annexe - (5.31 SQM)	● Office (1)	
B00J - R0006 - Home Base - (51.66 SQM) - Teaching Space: 1	● Student Space (23)	
B00J - R0008 - Home Base - (65.26 SQM) - Teaching Space: 1	● Student Space (30)	
B00J - R0010 - Staff Room Annexe - (10.35 SQM)	● Office (2)	
B00J - R0011 - Home Base - (51.95 SQM) - Teaching Space: 1	● Student Space (24)	
B00J - R0013 - Home Base - (51.95 SQM) - Teaching Space: 1	● Student Space (24)	
B00J - R0016 - Special Programs Room - (21.85 SQM)	● Student Space (10)	
B00J - R0017 - Interview - (11.04 SQM)	● Office (2)	
B00J - R0018 - Movement - (80.16 SQM)	Not Applicable	Circulation or storage space.
B00K - R0001 - Practical Activities - 1hb - (18.74 SQM)	● Student Space (8)	
B00K - R0003 - Withdrawal Space - 2hb - (11.42 SQM)	● Student Space (5)	
B00K - R0004 - Practical Activities - 1hb - (18.71 SQM)	● Student Space (8)	
B00K - R0006 - Home Base - (60.54 SQM) - Teaching Space: 1	● Student Space (28)	
B00K - R0007 - Home Base - (60.67 SQM) - Teaching Space: 1	● Student Space (28)	
OS 602 10685 - OS 602 10685 - Learning Unit - Standard With P.A.A. - (76 SQM)	● Student Space (35)	
OS 602 11185 - OS 602 11185 - Learning Unit - Standard With P.A.A. - (76 SQM)	● Student Space (35)	
OS 603 11586 - OS 603 11586 - Learning Unit - Standard With P.A.A. A/C - (76 SQM)	● Student Space (35)	
OS 750 16267 - OS 750 16267 - Learning Unit - ESL - (38 SQM)	● Student Space (17)	