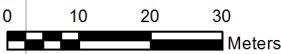


VENTILATION AUDIT REPORT

SCHOOL:	Penrose Public School (2860)
AMU REGION:	Southern NSW
STATE ELECTORATE:	Goulburn
LOCAL GOVERNMENT AREA:	Wingecarribee

2860 - Penrose Public School
Site Plan (10578)










1:701

Printed: 21-Mar-2020

Ventilation Audit Key

Category	Description
	Category A Operate this space in line with COVID safe school operations . It has the required level of natural ventilation. NB. Circulation and storage areas should not be used for groups or gatherings.
	Category B This space should be occupied at 1 person per 4m ² to comply with COVID safe school operations and the guided use of spaces . The report details the number of people who can be accommodated safely in each of the identified spaces.

Entity Location	Audit Condition Classification (Capacity)	Comment
B00A - R0001 - Movement - (8.42 SQM)	Not Applicable	Circulation or storage space.
B00A - R0002 - Clerical Office/Workroom - (19.87 SQM)	 Office (4)	
B00A - R0003 - Reading Area - (37.71 SQM)	 Student Space (17)	
B00A - R0005 - Principal - (8.39 SQM)	 Office (2)	
B00B - R0001 - Staff Room - (20.16 SQM)	 Office (5)	
B00B - R0003 - Staff Room Annexe - (13.69 SQM)	 Office (3)	
B00D - R0005 - Movement - (23.95 SQM)	Not Applicable	Circulation or storage space.
B00E - R0001 - Movement - (23.06 SQM)	Not Applicable	Circulation or storage space.
B00E - R0002 - Reading Area - (53.36 SQM)	 Student Space (24)	
B00F - R0001 - Movement - (21.48 SQM)	Not Applicable	Circulation or storage space.
B00G - R0001 - Home Base - (58.38 SQM) - Teaching Space: 1	 Student Space (27)	