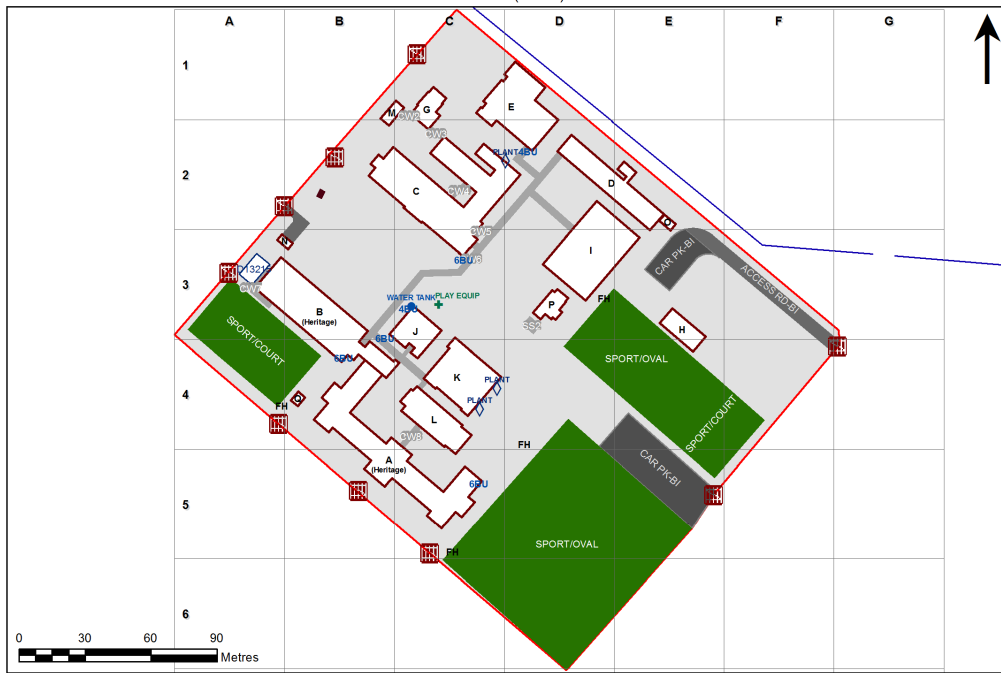


VENTILATION AUDIT REPORT

SCHOOL:	Newcastle High School (8509)
AMU REGION:	Hunter/Central Coast
STATE ELECTORATE:	Newcastle
LOCAL GOVERNMENT AREA:	Newcastle

8509 - Newcastle High School
Site Plan (11878)



1:1,613

Printed: 21-Aug-2021

Ventilation Audit Key

Category	Description
	Category A Operate this space in line with COVID safe school operations . It has the required level of natural ventilation. NB. Circulation and storage areas should not be used for groups or gatherings.
	Category B This space should be occupied at 1 person per 4m ² to comply with COVID safe school operations and the guided use of spaces . The report details the number of people who can be accommodated safely in each of the identified spaces.

Entity Location	Audit Condition Classification (Capacity)	Comment
B001 - R0001 - Stage - (28.75 SQM)	Not Applicable	Circulation or storage space.
B001 - R0003 - Movement - (14.41 SQM)	Not Applicable	Circulation or storage space.
B001 - R0005 - Multi-Purpose Space - (166.34 SQM)	● Student Space (77)	
B001 - R0006 - Movement - (14.68 SQM)	Not Applicable	Circulation or storage space.
B001 - R0012 - Staff Study - (16.18 SQM)	● Office (4)	
B001 - R0013 - Gymnasium - (27.2 SQM)	● Student Space (12)	
B001 - R1002 - Movement - (46.21 SQM)	Not Applicable	Circulation or storage space.
B001 - R1003 - Preparation - Materials - (25.71 SQM)	Not Applicable	Circulation or storage space.
B001 - R1004 - Food Technology L.S. - (66.39 SQM) - Teaching Space: 1	● Student Space (30)	
B001 - R1006 - Materials Technology L.S. - (66.11 SQM) - Teaching Space: 1	● Student Space (30)	
B002 - R0004 - General Assistants - (11.57 SQM)	● Office (2)	
B003 - R0001 - Movement - (45.56 SQM)	Not Applicable	Circulation or storage space.
B003 - R0002 - Principal Office - (20.6 SQM)	● Office (5)	
B003 - R0003 - Movement - (73.57 SQM)	Not Applicable	Circulation or storage space.
B003 - R0004 - General Learning Space - (51.83 SQM) - Teaching Space: 1	● Student Space (24)	
B003 - R0005 - General Learning Space - (52.88 SQM) - Teaching Space: 1	● Student Space (24)	
B003 - R0006 - General Learning Space - (49.67 SQM) - Teaching Space: 1	● Student Space (23)	
B003 - R0007 - General Learning Space - (58.02 SQM) - Teaching Space: 1	● Student Space (26)	
B003 - R0011 - Multipurpose Space - Type 3 - (55.67 SQM) - Teaching Space: 1	● Student Space (25)	
B003 - R0013 - Administration - Clerical - (15.03 SQM)	● Office (3)	
B003 - R1001 - Staff Study - (14.96 SQM)	● Office (3)	
B003 - R1002 - Movement - (61 SQM)	Not Applicable	Circulation or storage space.
B003 - R1003 - Staff Study - (51.72 SQM)	● Office (12)	
B003 - R1004 - Staff Study - (52.87 SQM)	● Office (13)	
B003 - R1005 - Staff Study - (49.58 SQM)	● Office (12)	
B003 - R1006 - Gymnasium - (58.19 SQM)	● Student Space (26)	
B004 - R0001 - Movement - (68.69 SQM)	Not Applicable	Circulation or storage space.
B004 - R0009 - Movement - (12.64 SQM)	Not Applicable	Circulation or storage space.
B00A - M1001 - Seminar - (33.68 SQM)	● Office (8)	
B00A - R0002 - General Learning Space - (60.59 SQM) - Teaching Space: 1	● Student Space (28)	
B00A - R0004 - Administration - Clerical - (16.86 SQM)	● Office (4)	
B00A - R0005 - Movement - (25.13 SQM)	Not Applicable	Circulation or storage space.
B00A - R0008 - General Assistants - (9.93 SQM)	● Office (2)	
B00A - R0011 - Interview/Office - Type 1 - (29.38 SQM)	● Office (7)	
B00A - R0013 - Clinic - Girls - (26.17 SQM)	● Office (6)	
B00A - R0015 - Clinic - Boys - (27.15 SQM)	● Office (6)	
B00A - R0017 - Deputy Principal Office - (21.66 SQM)	● Office (5)	
B00A - R0018 - Administration - Clerical - (43.34 SQM)	● Office (10)	
B00A - R0019 - Administration - Clerical - (33.84 SQM)	● Office (8)	
B00A - R0020 - Pupil Entry - (41.23 SQM)	Not Applicable	Circulation or storage space.
B00A - R0021 - Deputy Principal Office - (20.94 SQM)	● Office (5)	
B00A - R0023 - Principal Office - (31.67 SQM)	● Office (7)	
B00A - R0024 - General Learning Space - (54.78 SQM) - Teaching Space: 1	● Student Space (25)	
B00A - R0025 - General Learning Space - (54.79 SQM) - Teaching Space: 1	● Student Space (25)	
B00A - R0026 - General Learning Space - (59.62 SQM) - Teaching Space: 1	● Student Space (27)	
B00A - R0028 - Interview/Office - Type 1 - (6.72 SQM)	● Office (1)	
B00A - R0032 - Movement - (25.13 SQM)	Not Applicable	Circulation or storage space.
B00A - R0033 - Performance Workspace - (88.05 SQM)	● Student Space (40)	
B00A - R0037 - Movement - (7.4 SQM)	Not Applicable	Circulation or storage space.

Entity Location	Audit Condition Classification (Capacity)	Comment
B00A - R0040 - Movement - (256.68 SQM)	Not Applicable	Circulation or storage space.
B00A - R0041 - Leading Teacher - (23.2 SQM)	Office (5)	
B00A - R0042 - Movement - (36.58 SQM)	Not Applicable	Circulation or storage space.
B00A - R1001 - General Learning Space - (61.86 SQM) - Teaching Space: 1	Student Space (28)	
B00A - R1003 - Movement - (14.65 SQM)	Not Applicable	Circulation or storage space.
B00A - R1005 - General Learning Space - (73.42 SQM) - Teaching Space: 1	Student Space (34)	
B00A - R1006 - General Learning Space - (53.79 SQM) - Teaching Space: 1	Student Space (24)	
B00A - R1007 - General Learning Space - (53.79 SQM) - Teaching Space: 1	Student Space (24)	
B00A - R1008 - General Learning Space - (43.37 SQM) - Teaching Space: 1	Student Space (20)	
B00A - R1009 - Staff Study - (94.46 SQM)	Office (23)	
B00A - R1010 - Movement - (11.01 SQM)	Not Applicable	Circulation or storage space.
B00A - R1011 - General Learning Space - (43.12 SQM) - Teaching Space: 1	Student Space (20)	
B00A - R1012 - General Learning Space - (53.79 SQM) - Teaching Space: 1	Student Space (24)	
B00A - R1013 - General Learning Space - (54.15 SQM) - Teaching Space: 1	Student Space (25)	
B00A - R1015 - General Learning Space - (55.65 SQM) - Teaching Space: 1	Student Space (25)	
B00A - R1020 - Movement - (14.49 SQM)	Not Applicable	Circulation or storage space.
B00A - R1024 - Movement - (14.61 SQM)	Not Applicable	Circulation or storage space.
B00A - R1025 - Movement - (268.72 SQM)	Not Applicable	Circulation or storage space.
B00A - R1030 - General Learning Space - (91.52 SQM) - Teaching Space: 1	Student Space (42)	
B00B - R0001 - Ancillary Staff - (18.8 SQM)	Office (4)	
B00B - R0002 - Movement - (6.7 SQM)	Not Applicable	Circulation or storage space.
B00B - R0005 - Teachers Aides - (65.75 SQM)	Office (16)	
B00B - R0011 - Computer Learning Space - (104.1 SQM) - Teaching Space: 1	Student Space (48)	
B00B - R0012 - Staff Study - (27.76 SQM)	Office (6)	
B00B - R0015 - General Learning Space - (56.25 SQM) - Teaching Space: 1	Student Space (26)	
B00B - R0018 - General Learning Space - (52.09 SQM) - Teaching Space: 1	Student Space (24)	
B00B - R0020 - Staff Study - (18.72 SQM)	Office (4)	
B00B - R0022 - Staff Study - (16.26 SQM)	Office (4)	
B00B - R0024 - Materials Technology L.S. - (65.31 SQM) - Teaching Space: 1	Student Space (30)	
B00B - R0027 - Materials Technology L.S. - (64.45 SQM) - Teaching Space: 1	Student Space (29)	
B00B - R0033 - Seminar - Type 1 - (32.81 SQM)	Office (8)	
B00B - R0034 - Food Technology L.S. - (85.04 SQM) - Teaching Space: 1	Student Space (39)	
B00B - R0035 - Preparation - Materials - (19.13 SQM)	Not Applicable	Circulation or storage space.
B00B - R0038 - Staff Lounge - (25.41 SQM)	Office (6)	
B00B - R0040 - Movement - (210.16 SQM)	Not Applicable	Circulation or storage space.
B00B - R1001 - Staff Study - (18.62 SQM)	Office (4)	
B00B - R1004 - General Learning Space - (52.6 SQM) - Teaching Space: 1	Student Space (24)	
B00B - R1007 - General Learning Space - (65.3 SQM) - Teaching Space: 1	Student Space (30)	
B00B - R1008 - Staff Study - (25.76 SQM)	Office (6)	
B00B - R1009 - Staff Study - (38.09 SQM)	Office (9)	
B00B - R1012 - Staff Study - (24.45 SQM)	Office (6)	
B00B - R1013 - General Learning Space - (50.79 SQM) - Teaching Space: 1	Student Space (23)	
B00B - R1014 - Music Learning Space - (76.38 SQM) - Teaching Space: 1	Student Space (35)	
B00B - R1015 - Movement - (8.06 SQM)	Not Applicable	Circulation or storage space.
B00B - R1017 - Music Learning Space - (52.61 SQM) - Teaching Space: 1	Student Space (24)	
B00B - R1019 - General Learning Space - (52.97 SQM) - Teaching Space: 1	Student Space (24)	
B00B - R1023 - Staff Study - (25.89 SQM)	Office (6)	

Entity Location	Audit Condition Classification (Capacity)	Comment
B00B - R1027 - General Learning Space - (65.76 SQM) - Teaching Space: 1	Student Space (30)	
B00B - R1031 - General Learning Space - (66.85 SQM) - Teaching Space: 1	Student Space (31)	
B00B - R1032 - Movement - (185.61 SQM)	Not Applicable	Circulation or storage space.
B00C - R0010 - Staff Study - (10.96 SQM)	Office (2)	
B00C - R0011 - Movement - (9.05 SQM)	Not Applicable	Circulation or storage space.
B00C - R0013 - Movement - (11.84 SQM)	Not Applicable	Circulation or storage space.
B00C - R0014 - Art Learning Space - (61.3 SQM) - Teaching Space: 1	Student Space (28)	
B00C - R0015 - Staff Study - (25.57 SQM)	Office (6)	
B00C - R0016 - Movement - (30.27 SQM)	Not Applicable	Circulation or storage space.
B00C - R0017 - Art Learning Space - (61.15 SQM) - Teaching Space: 1	Student Space (28)	
B00C - R0018 - Movement - (11.73 SQM)	Not Applicable	Circulation or storage space.
B00C - R0019 - Movement - (11.61 SQM)	Not Applicable	Circulation or storage space.
B00C - R0020 - Workshop - (35.19 SQM)	Student Space (16)	
B00C - R0021 - Art Learning Space - (62.36 SQM) - Teaching Space: 1	Student Space (28)	
B00C - R0023 - Staff Study - (29.05 SQM)	Office (7)	
B00C - R0025 - Design L.S. - (48.61 SQM) - Teaching Space: 1	Student Space (22)	
B00C - R0026 - Art Learning Space - (48.61 SQM) - Teaching Space: 1	Student Space (22)	
B00C - R0028 - Movement - (5.51 SQM)	Not Applicable	Circulation or storage space.
B00C - R0031 - Materials Technology L.S. - (48.95 SQM) - Teaching Space: 1	Student Space (22)	
B00C - R0032 - Wood Technology Bay - (34.29 SQM)	Not Applicable	Circulation or storage space.
B00C - R0042 - Wood Technology Bay - (27.49 SQM)	Not Applicable	Circulation or storage space.
B00C - R0043 - Materials Technology L.S. - (48.94 SQM) - Teaching Space: 1	Student Space (22)	
B00C - R0045 - Movement - (5.37 SQM)	Not Applicable	Circulation or storage space.
B00C - R0047 - Movement - (142.81 SQM)	Not Applicable	Circulation or storage space.
B00C - R0048 - Movement - (11.89 SQM)	Not Applicable	Circulation or storage space.
B00C - R0049 - Movement - (11.03 SQM)	Not Applicable	Circulation or storage space.
B00C - R0055 - Movement - (5.94 SQM)	Not Applicable	Circulation or storage space.
B00C - R0057 - Metal Technology Bay - (84.62 SQM)	Not Applicable	Circulation or storage space.
B00C - R0058 - Materials Learning Space - Type 1 - (68.84 SQM) - Teaching Space: 1	Student Space (31)	
B00C - R0059 - Metal Technology Bay - (17.93 SQM)	Not Applicable	Circulation or storage space.
B00C - R0060 - Metal Technology Bay - (28.52 SQM)	Not Applicable	Circulation or storage space.
B00C - R0061 - Metal Technology Bay - (112.44 SQM)	Not Applicable	Circulation or storage space.
B00C - R0062 - Welding Area - (10.17 SQM)	Not Applicable	Circulation or storage space.
B00C - R1001 - Computer Learning Space - (72.74 SQM) - Teaching Space: 1	Student Space (33)	
B00C - R1003 - Staff Study - (12.46 SQM)	Office (3)	
B00C - R1004 - Staff Study - (35.43 SQM)	Office (8)	
B00C - R1007 - Movement - (5.72 SQM)	Not Applicable	Circulation or storage space.
B00C - R1008 - General Learning Space - (48.95 SQM) - Teaching Space: 1	Student Space (22)	
B00C - R1011 - Computer Learning Space - (72.62 SQM) - Teaching Space: 1	Student Space (33)	
B00C - R1012 - Movement - (5.67 SQM)	Not Applicable	Circulation or storage space.
B00C - R1014 - General Learning Space - (49.29 SQM) - Teaching Space: 1	Student Space (22)	
B00C - R1015 - General Learning Space - (49.29 SQM) - Teaching Space: 1	Student Space (22)	
B00C - R1016 - Staff Study - (70.98 SQM)	Office (17)	
B00C - R1020 - Movement - (5.67 SQM)	Not Applicable	Circulation or storage space.
B00C - R1021 - Movement - (130.16 SQM)	Not Applicable	Circulation or storage space.
B00C - R1026 - General Learning Space - (98.12 SQM) - Teaching Space: 1	Student Space (45)	
B00C - R2001 - General Learning Space - (60.34 SQM) - Teaching Space: 1	Student Space (27)	
B00C - R2002 - General Learning Space - (48.95 SQM) - Teaching Space: 1	Student Space (22)	
B00C - R2003 - General Learning Space - (48.95 SQM) - Teaching Space: 1	Student Space (22)	
B00C - R2006 - Movement - (5.72 SQM)	Not Applicable	Circulation or storage space.
B00C - R2007 - Staff Study - (29.23 SQM)	Office (7)	

Entity Location	Audit Condition Classification (Capacity)	Comment
B00C - R2008 - General Learning Space - (48.95 SQM) - Teaching Space: 1	● Student Space (22)	
B00C - R2010 - General Learning Space - (49.29 SQM) - Teaching Space: 1	● Student Space (22)	
B00C - R2011 - Movement - (5.44 SQM)	Not Applicable	Circulation or storage space.
B00C - R2013 - General Learning Space - (49.68 SQM) - Teaching Space: 1	● Student Space (23)	
B00C - R2014 - General Learning Space - (49.67 SQM) - Teaching Space: 1	● Student Space (23)	
B00C - R2015 - General Learning Space - (72.81 SQM) - Teaching Space: 1	● Student Space (33)	
B00C - R2016 - General Learning Space - (49.68 SQM) - Teaching Space: 1	● Student Space (23)	
B00C - R2017 - General Learning Space - (49.68 SQM) - Teaching Space: 1	● Student Space (23)	
B00C - R2019 - Movement - (5.45 SQM)	Not Applicable	Circulation or storage space.
B00C - R2020 - Movement - (129.01 SQM)	Not Applicable	Circulation or storage space.
B00D - R0001 - Movement - (21.78 SQM)	Not Applicable	Circulation or storage space.
B00D - R0002 - Laboratory L.S. - (86.57 SQM) - Teaching Space: 1	● Student Space (40)	
B00D - R0004 - Preparation - (27.94 SQM)	Not Applicable	Circulation or storage space.
B00D - R0005 - Laboratory L.S. - (86.58 SQM) - Teaching Space: 1	● Student Space (40)	
B00D - R0007 - Movement - (6.11 SQM)	Not Applicable	Circulation or storage space.
B00D - R0009 - Laboratory L.S. - (85.48 SQM) - Teaching Space: 1	● Student Space (39)	
B00D - R0011 - Preparation - (23.87 SQM)	Not Applicable	Circulation or storage space.
B00D - R0012 - Movement - (19.67 SQM)	Not Applicable	Circulation or storage space.
B00D - R0013 - Movement - (133.34 SQM)	Not Applicable	Circulation or storage space.
B00D - R1001 - Movement - (10.55 SQM)	Not Applicable	Circulation or storage space.
B00D - R1002 - Laboratory L.S. - (94.62 SQM) - Teaching Space: 1	● Student Space (43)	
B00D - R1003 - Preparation - (38.72 SQM)	Not Applicable	Circulation or storage space.
B00D - R1005 - Laboratory L.S. - (91.7 SQM) - Teaching Space: 1	● Student Space (42)	
B00D - R1007 - Staff Study - (10.3 SQM)	○ Office (2)	
B00D - R1011 - Movement - (8.38 SQM)	Not Applicable	Circulation or storage space.
B00D - R1012 - Staff Study - (25.87 SQM)	○ Office (6)	
B00D - R1013 - Movement - (10.72 SQM)	Not Applicable	Circulation or storage space.
B00D - R1014 - Movement - (133.37 SQM)	Not Applicable	Circulation or storage space.
B00D - R2001 - Movement - (10.55 SQM)	Not Applicable	Circulation or storage space.
B00D - R2002 - Laboratory L.S. - (94.98 SQM) - Teaching Space: 1	● Student Space (44)	
B00D - R2003 - Preparation - (38.58 SQM)	Not Applicable	Circulation or storage space.
B00D - R2005 - Laboratory L.S. - (92.43 SQM) - Teaching Space: 1	● Student Space (42)	
B00D - R2006 - General Learning Space - (92.79 SQM) - Teaching Space: 1	● Student Space (43)	
B00D - R2009 - Staff Study - (19.05 SQM)	○ Office (4)	
B00D - R2010 - Movement - (10.55 SQM)	Not Applicable	Circulation or storage space.
B00D - R2011 - Movement - (133.47 SQM)	Not Applicable	Circulation or storage space.
B00D - R9002 - General Assistants - (101.26 SQM)	○ Office (25)	
B00D - R9003 - Movement - (12.24 SQM)	Not Applicable	Circulation or storage space.
B00D - R9004 - Movement - (11.96 SQM)	Not Applicable	Circulation or storage space.
B00E - R0001 - Multi-Purpose Space - (406.9 SQM)	● Student Space (188)	
B00E - R0002 - Stage - (93.25 SQM)	Not Applicable	Circulation or storage space.
B00E - R0003 - Movement - (12.89 SQM)	Not Applicable	Circulation or storage space.
B00E - R0010 - Movement - (5.76 SQM)	Not Applicable	Circulation or storage space.
B00E - R0011 - Movement - (12.61 SQM)	Not Applicable	Circulation or storage space.
B00E - R0015 - Staff Kitchen - (9.08 SQM)	○ Office (2)	
B00G - R0002 - Art Learning Space - (14.29 SQM) - Teaching Space: 1	● Student Space (6)	
B00G - R0003 - Art Learning Space - (41.06 SQM) - Teaching Space: 1	● Student Space (19)	
B00G - R0008 - Movement - (37.36 SQM)	Not Applicable	Circulation or storage space.
B00H - R0001 - Movement - (34.99 SQM)	Not Applicable	Circulation or storage space.
B00H - R0002 - General Learning Space - (89.53 SQM) - Teaching Space: 1	● Student Space (41)	

Entity Location	Audit Condition Classification (Capacity)	Comment
B00I - R0002 - Student Canteen - (102.38 SQM)	Not Applicable	Circulation or storage space.
B00I - R0003 - Movement - (18.65 SQM)	Not Applicable	Circulation or storage space.
B00I - R0005 - Movement - (18.91 SQM)	Not Applicable	Circulation or storage space.
B00I - R0016 - Staff Study - (40.64 SQM)	Office (10)	
B00I - R0020 - Movement - (477.76 SQM)	Not Applicable	Circulation or storage space.
B00J - R0002 - Staff Study - (11.9 SQM)	Office (2)	
B00J - R0003 - Staff Kitchen - (21.67 SQM)	Office (5)	
B00J - R0007 - Commonroom - (131.6 SQM)	Office (32)	
B00J - R0008 - Staff Study - (69.74 SQM)	Office (17)	
B00K - M0001 - Main Area - (75.75 SQM)	Not Applicable	Circulation or storage space.
B00K - M0002 - Seminar - (64.16 SQM)	Office (16)	
B00K - R0001 - Workroom - (50.96 SQM)	Office (12)	
B00K - R0002 - Audio Visual Workroom - (47.49 SQM)	Student Space (22)	
B00K - R0005 - Entry - (22.93 SQM)	Not Applicable	Circulation or storage space.
B00K - R0009 - Seminar - (12.17 SQM)	Office (3)	
B00K - R0010 - Seminar - (12.17 SQM)	Office (3)	
B00K - R0011 - Seminar - (13.31 SQM)	Office (3)	
B00K - R0012 - Seminar - (10.65 SQM)	Office (2)	
B00K - R0013 - Main Area - (300.31 SQM)	Not Applicable	Circulation or storage space.
B00K - R0014 - Movement - (49.37 SQM)	Not Applicable	Circulation or storage space.
B00L - R0002 - Movement - (12.22 SQM)	Not Applicable	Circulation or storage space.
B00L - R0004 - Performance Workspace - (265.82 SQM) - Teaching Space: 1	Student Space (123)	
B00L - R0005 - Stage - (31.5 SQM)	Not Applicable	Circulation or storage space.
B00L - R0006 - Movement - (6.07 SQM)	Not Applicable	Circulation or storage space.
B00L - R0007 - Movement - (6.13 SQM)	Not Applicable	Circulation or storage space.
B00L - R0010 - Movement - (9.05 SQM)	Not Applicable	Circulation or storage space.
B00M - R0001 - Darkroom Space - (9.3 SQM)	Office (2)	
B00M - R0004 - Darkroom Space - (32.53 SQM)	Office (8)	
B00P - R0002 - Administration - Executive - (16.9 SQM)	Office (4)	
B00P - R0003 - Movement - (5.64 SQM)	Not Applicable	Circulation or storage space.
B00P - R0004 - Administration - Clerical - (16.96 SQM)	Office (4)	
B00P - R0010 - Administration - Clerical - (11.16 SQM)	Office (2)	
B00P - R0011 - Staff Kitchen - (15.38 SQM)	Office (3)	
B00P - R0012 - Movement - (5.62 SQM)	Not Applicable	Circulation or storage space.
OS 710 13215 - OS 710 13215 - Home Science/Pantry/Laundry - (95 SQM)	Office (23)	