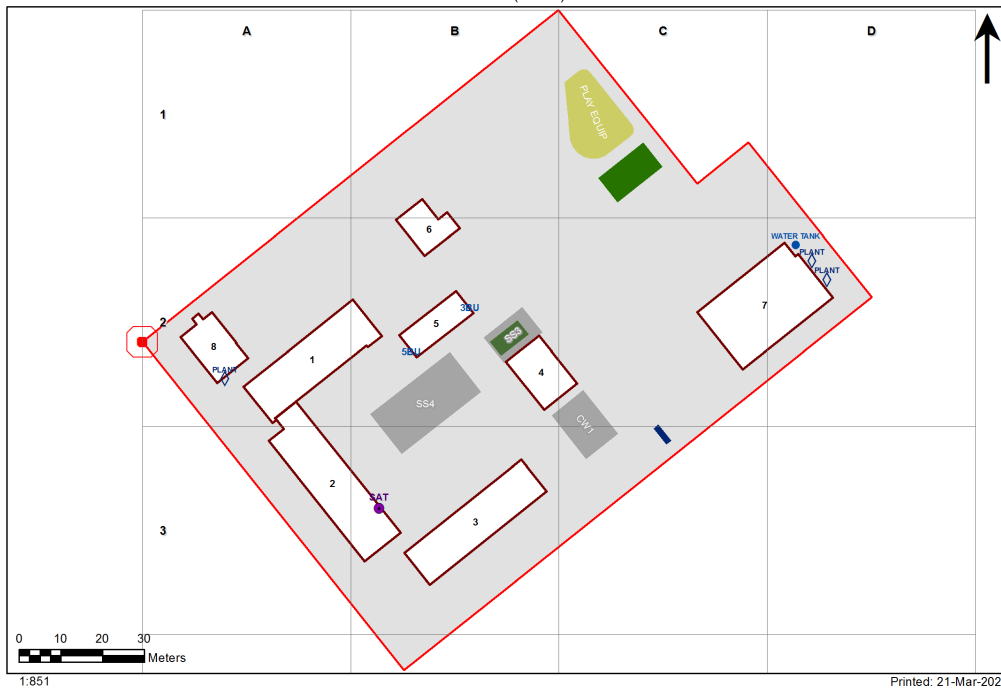


VENTILATION AUDIT REPORT

SCHOOL:	Morgan Street Public School (4232)
AMU REGION:	North Western NSW
STATE ELECTORATE:	Barwon
LOCAL GOVERNMENT AREA:	Broken Hill










4232 - Morgan Street Public School
Site Plan (13548)



Ventilation Audit Key

Category	Description
	Category A Operate this space in line with COVID safe school operations . It has the required level of natural ventilation. NB. Circulation and storage areas should not be used for groups or gatherings.
	Category B This space should be occupied at 1 person per 4m ² to comply with COVID safe school operations and the guided use of spaces . The report details the number of people who can be accommodated safely in each of the identified spaces.

Entity Location	Audit Condition Classification (Capacity)	Comment
B001 - R0004 - Withdrawal Space - 1hb - (15.07 SQM)	● Student Space (6)	
B001 - R0005 - Communal Space - (178.55 SQM)	● Student Space (82)	
B001 - R0009 - Movement - (13.2 SQM)	Not Applicable	Circulation or storage space.
B001 - R0010 - Movement - (10.52 SQM)	Not Applicable	Circulation or storage space.
B001 - R0011 - Movement - (6.53 SQM)	Not Applicable	Circulation or storage space.
B001 - R1001 - Movement - (65.43 SQM)	Not Applicable	Circulation or storage space.
B001 - R1002 - Home Base - (56.99 SQM) - Teaching Space: 1	● Student Space (26)	
B001 - R1009 - Home Base - (56.95 SQM) - Teaching Space: 1	● Student Space (26)	
B002 - R0004 - Home Base - (86.2 SQM) - Teaching Space: 1	● Student Space (39)	
B002 - R0005 - Home Base - (85.96 SQM) - Teaching Space: 1	● Student Space (39)	
B002 - R0009 - Movement - (74.52 SQM)	Not Applicable	Circulation or storage space.
B002 - R0010 - Staff Room - (20.21 SQM)	● Office (5)	
B002 - R0011 - Duplicating Workroom - (18.57 SQM)	● Office (4)	
B002 - R0014 - Staff Room Annexe - (16.22 SQM)	● Office (4)	
B002 - R0015 - Entry Vestibule - (23.76 SQM)	Not Applicable	Circulation or storage space.
B002 - R0017 - Sick Bay - (5.35 SQM)	● Student Space (2)	
B003 - R0002 - Home Base - (45.79 SQM) - Teaching Space: 1	● Student Space (21)	
B003 - R0003 - Home Base - (45.78 SQM) - Teaching Space: 1	● Student Space (21)	
B003 - R0004 - Home Base - (45.8 SQM) - Teaching Space: 1	● Student Space (21)	
B003 - R0005 - Home Base - (53.47 SQM) - Teaching Space: 1	● Student Space (24)	
B004 - R0001 - Home Base - (52.48 SQM) - Teaching Space: 1	● Student Space (24)	
B004 - R0002 - Home Base - (52.55 SQM) - Teaching Space: 1	● Student Space (24)	
B006 - R0002 - Dental Clinic - (8.57 SQM)	● Office (2)	
B006 - R0003 - Dental Clinic - (8.57 SQM)	● Office (2)	
B006 - R0006 - Dental Clinic - (6.2 SQM)	● Office (1)	
B006 - R0007 - Dental Clinic - (8.5 SQM)	● Office (2)	
B006 - R0008 - Dental Clinic - (8.85 SQM)	● Office (2)	
B006 - R0009 - Dental Clinic - (9.85 SQM)	● Office (2)	
B006 - R0011 - Dental Clinic - (5.58 SQM)	● Office (1)	
B006 - R0014 - Dental Clinic - (14.22 SQM)	● Office (3)	
B007 - R0004 - Communal Space - (238.83 SQM)	● Student Space (110)	
B008 - R0002 - Movement - (5.19 SQM)	Not Applicable	Circulation or storage space.
B008 - R0003 - Movement - (11.93 SQM)	Not Applicable	Circulation or storage space.
B008 - R0006 - Clerical Office - (12.76 SQM)	● Office (3)	
B008 - R0009 - Clerical Office - (16.83 SQM)	● Office (4)	
B00A - R0004 - Entry Vestibule - (15.14 SQM)	Not Applicable	Circulation or storage space.
B00A - R0006 - Movement - (8.56 SQM)	Not Applicable	Circulation or storage space.
B00A - R0007 - Principal - (17.49 SQM)	● Office (4)	
B00A - R0011 - Sick Bay - (7.57 SQM)	● Student Space (3)	
B00A - R0012 - Staff Room Annexe - (11.22 SQM)	● Office (2)	
B00A - R0013 - Interview - (12.62 SQM)	● Office (3)	
B00A - R0014 - Movement - (15.65 SQM)	Not Applicable	Circulation or storage space.
B00A - R0019 - Communal Space - (133.36 SQM)	● Student Space (61)	
B00A - R0020 - Staff Room Annexe - (31.12 SQM)	● Office (7)	
B00A - R1008 - Special Programs Room - (65.73 SQM)	● Student Space (30)	
B00A - R1009 - Staff Room - (50.38 SQM)	● Office (12)	
B00B - R0005 - Canteen - (44.8 SQM)	Not Applicable	Circulation or storage space.
B00B - R0006 - Staff Room Annexe - (8.67 SQM)	● Office (2)	

Entity Location	Audit Condition Classification (Capacity)	Comment
B00B - R1001 - Home Base - (53.65 SQM) - Teaching Space: 1	 Student Space (24)	
B00B - R1002 - Home Base - (54.02 SQM) - Teaching Space: 1	 Student Space (25)	
B00B - R1003 - Home Base - (52.99 SQM) - Teaching Space: 1	 Student Space (24)	
B00B - R1004 - Home Base - (53.57 SQM) - Teaching Space: 1	 Student Space (24)	
B00C - R0003 - Home Base - (53.79 SQM) - Teaching Space: 1	 Student Space (24)	
B00C - R0004 - Home Base - (53.71 SQM) - Teaching Space: 1	 Student Space (24)	
B00D - R1002 - Reading Area - (156 SQM)	 Student Space (72)	
B00D - R1005 - Home Base - (56.94 SQM) - Teaching Space: 1	 Student Space (26)	
B00D - R1008 - Movement - (7.69 SQM)	Not Applicable	Circulation or storage space.
B00D - R1010 - Home Base - (57.01 SQM) - Teaching Space: 1	 Student Space (26)	