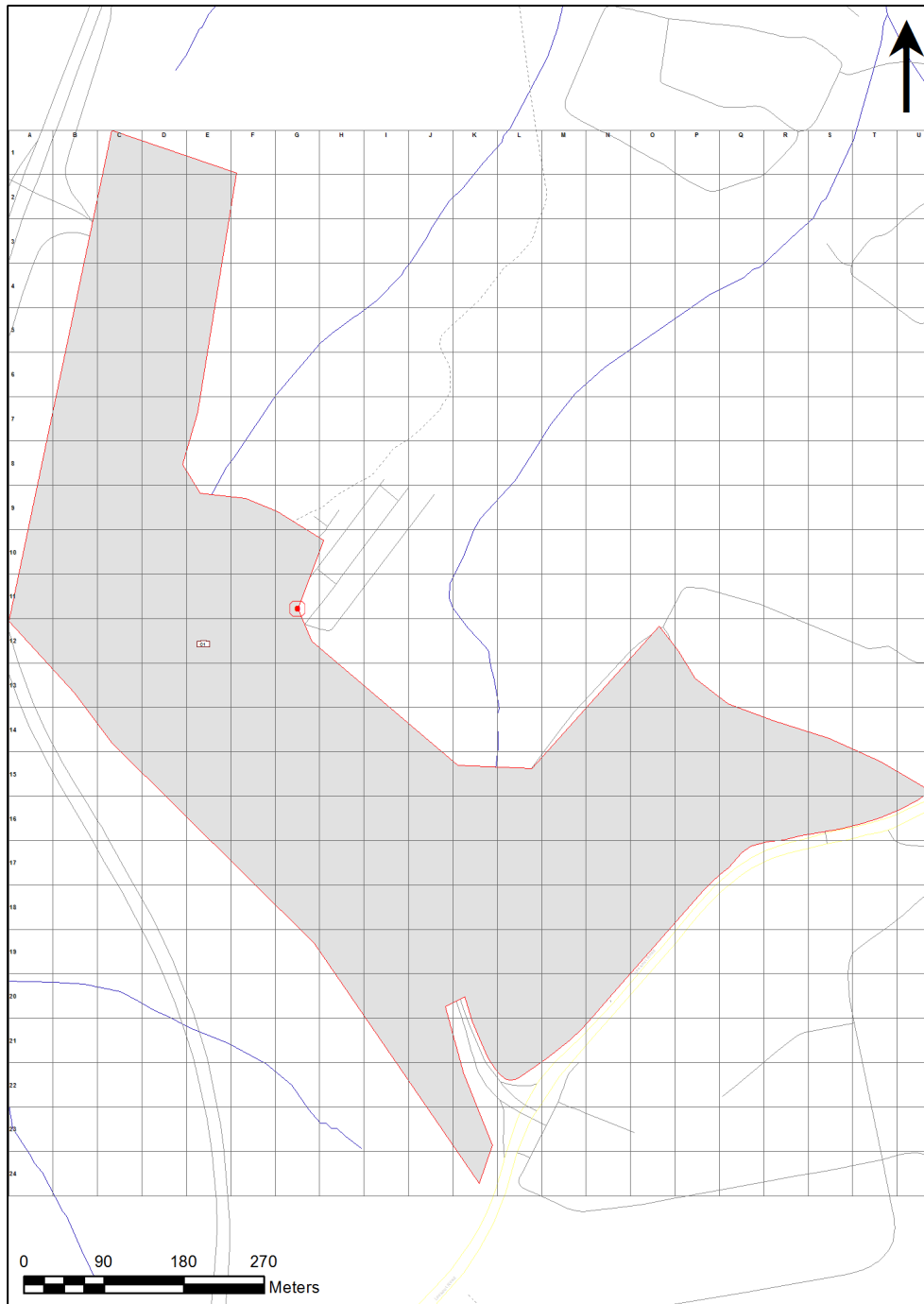


# VENTILATION AUDIT REPORT

<b>SCHOOL:</b>	<b>John Hunter Hospital School (5558)</b>
<b>AMU REGION:</b>	<b>Hunter/Central Coast</b>
<b>STATE ELECTORATE:</b>	<b>Wallsend</b>
<b>LOCAL GOVERNMENT AREA:</b>	<b>Newcastle</b>

5558 - John Hunter Hospital School  
Site Plan (13569)



Printed: 21-Mar-2020

## Ventilation Audit Key

Category	Description
	Category A Operate this space in line with <a href="#">COVID safe school operations</a> . It has the required level of natural ventilation. NB. Circulation and storage areas should not be used for groups or gatherings.
	Category B This space should be occupied at 1 person per 4m <sup>2</sup> to comply with <a href="#">COVID safe school operations and the guided use of spaces</a> . The report details the number of people who can be accommodated safely in each of the identified spaces.

Entity Location	Audit Condition Classification (Capacity)	Comment
BOC1 - R1001 - Clerical Office - (15.13 SQM)	Office (3)	
BOC1 - R1002 - General Learning Space - (19.16 SQM) - Teaching Space: 1	Student Space (8)	
BOC1 - R1003 - Movement - (6.87 SQM)	Not Applicable	Circulation or storage space.
BOC1 - R1004 - Home Base - (19.46 SQM) - Teaching Space: 1	Student Space (9)	
BOC1 - R1005 - Practical Activities - 1hb - (15.09 SQM)	Student Space (7)	