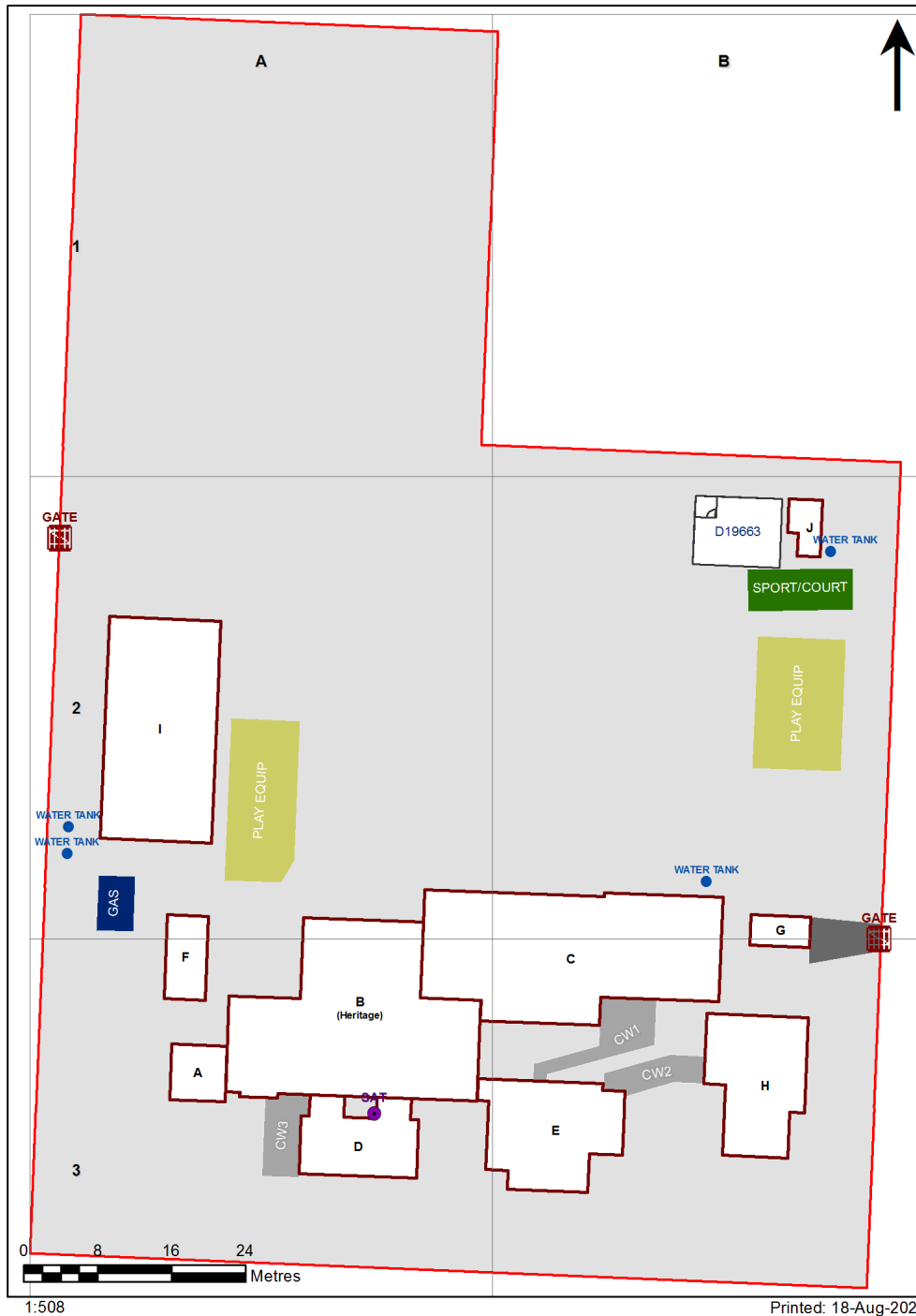


# VENTILATION AUDIT REPORT

<b>SCHOOL:</b>	<b>Greenwell Point Public School (3872)</b>
<b>AMU REGION:</b>	<b>Southern NSW</b>
<b>STATE ELECTORATE:</b>	<b>South Coast</b>
<b>LOCAL GOVERNMENT AREA:</b>	<b>Shoalhaven</b>

3872 - Greenwell Point Public School  
Site Plan (11000)



1:508

Printed: 18-Aug-2021

## Ventilation Audit Key

Category	Description
	Category A Operate this space in line with <a href="#">COVID safe school operations</a> . It has the required level of natural ventilation. NB. Circulation and storage areas should not be used for groups or gatherings.
	Category B This space should be occupied at 1 person per 4m <sup>2</sup> to comply with <a href="#">COVID safe school operations and the guided use of spaces</a> . The report details the number of people who can be accommodated safely in each of the identified spaces.

Entity Location	Audit Condition Classification (Capacity)	Comment
B00B - R0001 - Practical Activities - 1hb - (19.48 SQM)	● Student Space (9)	
B00B - R0007 - Canteen - (18.79 SQM)	Not Applicable	Circulation or storage space.
B00B - R0014 - Movement - (101.45 SQM)	Not Applicable	Circulation or storage space.
B00C - R0001 - Practical Activities - 1hb - (15.17 SQM)	● Student Space (7)	
B00C - R0003 - Home Base - (74.25 SQM) - Teaching Space: 1	● Student Space (34)	
B00C - R0006 - Home Base - (55.8 SQM) - Teaching Space: 1	● Student Space (25)	
B00C - R0007 - Practical Activities - 1hb - (18.18 SQM)	● Student Space (8)	
B00C - R0010 - Movement - (27.32 SQM)	Not Applicable	Circulation or storage space.
B00C - R0011 - Reading Area - (91.97 SQM)	● Student Space (42)	
B00D - R0001 - Home Base - (65.61 SQM) - Teaching Space: 1	● Student Space (30)	
B00D - R0003 - Movement - (8.56 SQM)	Not Applicable	Circulation or storage space.
B00D - R0004 - Movement - (8.56 SQM)	Not Applicable	Circulation or storage space.
B00E - R0004 - Practical Activities - 1hb - (15.06 SQM)	● Student Space (6)	
B00E - R0005 - Home Base - (58.02 SQM) - Teaching Space: 1	● Student Space (26)	
B00E - R0007 - Movement - (15.69 SQM)	Not Applicable	Circulation or storage space.
B00E - R0009 - Movement - (28.82 SQM)	Not Applicable	Circulation or storage space.
B00H - R0001 - Staff Room - (32.8 SQM)	● Office (8)	
B00H - R0002 - Entry Vestibule - (6.66 SQM)	Not Applicable	Circulation or storage space.
B00H - R0003 - Clerical Office - (14.55 SQM)	● Office (3)	
B00H - R0004 - Sick Bay - (10.69 SQM)	● Student Space (4)	
B00H - R0005 - Clerical Office/Workroom - (10.62 SQM)	● Office (2)	
B00H - R0006 - Principal - (10.69 SQM)	● Office (2)	
B00H - R0010 - Movement - (6.58 SQM)	Not Applicable	Circulation or storage space.
B00I - R0001 - Communal Space - (214.02 SQM)	● Student Space (99)	
B00I - R0002 - Raised Platform - (29.17 SQM)	Not Applicable	Circulation or storage space.
B00I - R0003 - Movement - (19.77 SQM)	Not Applicable	Circulation or storage space.
B00I - R0005 - Movement - (19.92 SQM)	Not Applicable	Circulation or storage space.
B00J - R0001 - Outdoor Learning Area - (5.06 SQM)	Not Applicable	Circulation or storage space.
B00J - R0002 - Outdoor Learning Area - (12.25 SQM)	Not Applicable	Circulation or storage space.
OS 606 19663 - OS 606 19663 - Learning Unit - Standard With P.A.A A/C - (76 SQM)	● Student Space (35)	