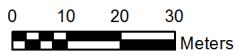
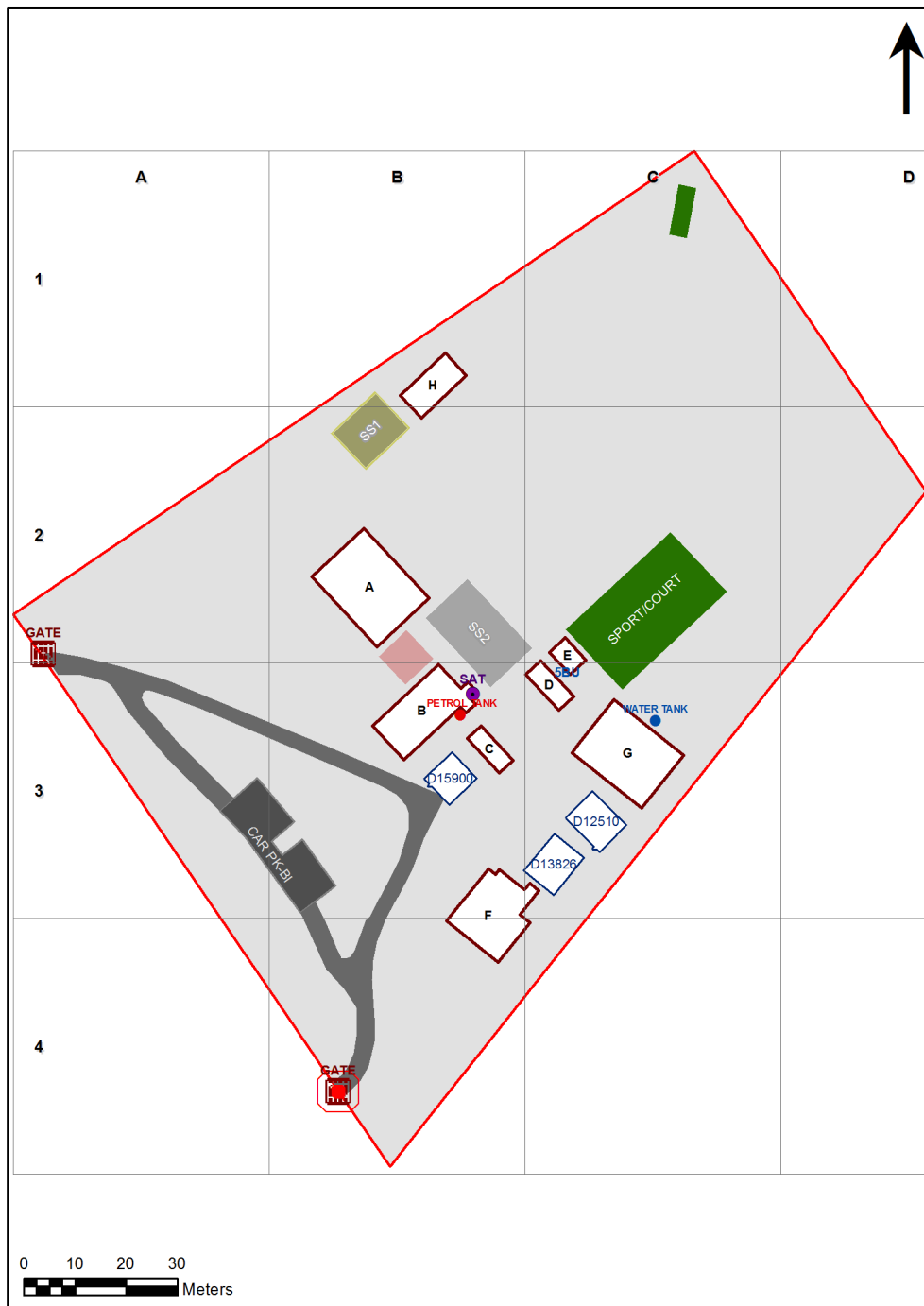


# VENTILATION AUDIT REPORT

<b>SCHOOL:</b>	<b>Exeter Public School (1891)</b>
<b>AMU REGION:</b>	<b>Southern NSW</b>
<b>STATE ELECTORATE:</b>	<b>Goulburn</b>
<b>LOCAL GOVERNMENT AREA:</b>	<b>Wingecarribee</b>

1891 - Exeter Public School  
Site Plan (11961)



1:926

Printed: 20-Mar-2020

## Ventilation Audit Key

Category	Description
	Category A Operate this space in line with <a href="#">COVID safe school operations</a> . It has the required level of natural ventilation. NB. Circulation and storage areas should not be used for groups or gatherings.
	Category B This space should be occupied at 1 person per 4m <sup>2</sup> to comply with <a href="#">COVID safe school operations and the guided use of spaces</a> . The report details the number of people who can be accommodated safely in each of the identified spaces.

Entity Location	Audit Condition Classification (Capacity)	Comment
B00A - R0001 - Practical Activities - 1hb - (15.9 SQM)	● Student Space (7)	
B00A - R0002 - Home Base - (60.37 SQM) - Teaching Space: 1	● Student Space (28)	
B00A - R0005 - Withdrawal Space - 1hb - (11.83 SQM)	● Student Space (5)	
B00A - R0006 - Home Base - (60.63 SQM) - Teaching Space: 1	● Student Space (28)	
B00A - R0009 - Practical Activities - 1hb - (15.99 SQM)	● Student Space (7)	
B00B - R0002 - Reading Area - (40.76 SQM)	● Student Space (18)	
B00B - R0003 - Reading Area - (48.92 SQM)	● Student Space (22)	
B00B - R0004 - Seminar/Study - (16.54 SQM)	● Office (4)	
B00B - R0006 - Canteen - (8.98 SQM)	Not Applicable	Circulation or storage space.
B00C - R0001 - Movement - (20.08 SQM)	Not Applicable	Circulation or storage space.
B00F - R0001 - Principal - (14.83 SQM)	● Office (3)	
B00F - R0002 - Staff Room - (13.45 SQM)	● Office (3)	
B00F - R0005 - Clerical Office/Workroom - (9.69 SQM)	● Office (2)	
B00F - R0008 - Staff Kitchen - (11.94 SQM)	● Office (2)	
B00F - R0010 - Staff Room Annexe - (15.33 SQM)	● Office (3)	
B00F - R0011 - Sick Bay - (7.57 SQM)	● Student Space (3)	
B00F - R0012 - Clerical Office - (15.76 SQM)	● Office (3)	
B00F - R0013 - Entry Vestibule - (7.26 SQM)	Not Applicable	Circulation or storage space.
B00F - R0016 - Movement - (6.17 SQM)	Not Applicable	Circulation or storage space.
B00G - R0002 - Practical Activities - 1hb - (19.36 SQM)	● Student Space (8)	
B00G - R0004 - Home Base - (58.76 SQM) - Teaching Space: 1	● Student Space (27)	
B00G - R0005 - Withdrawal Space - 2hb - (10.67 SQM)	● Student Space (4)	
B00G - R0006 - Home Base - (58.67 SQM) - Teaching Space: 1	● Student Space (27)	
B00G - R0008 - Practical Activities - 1hb - (19.36 SQM)	● Student Space (8)	
OS 520 15900 - OS 520 15900 - Staff Study - (57 SQM)	● Office (14)	
OS 602 12510 - OS 602 12510 - Learning Unit - Standard With P.A.A. - (76 SQM)	● Student Space (35)	
OS 606 13826 - OS 606 13826 - Learning Unit - Standard With P.A.A A/C - (76 SQM)	● Student Space (35)	