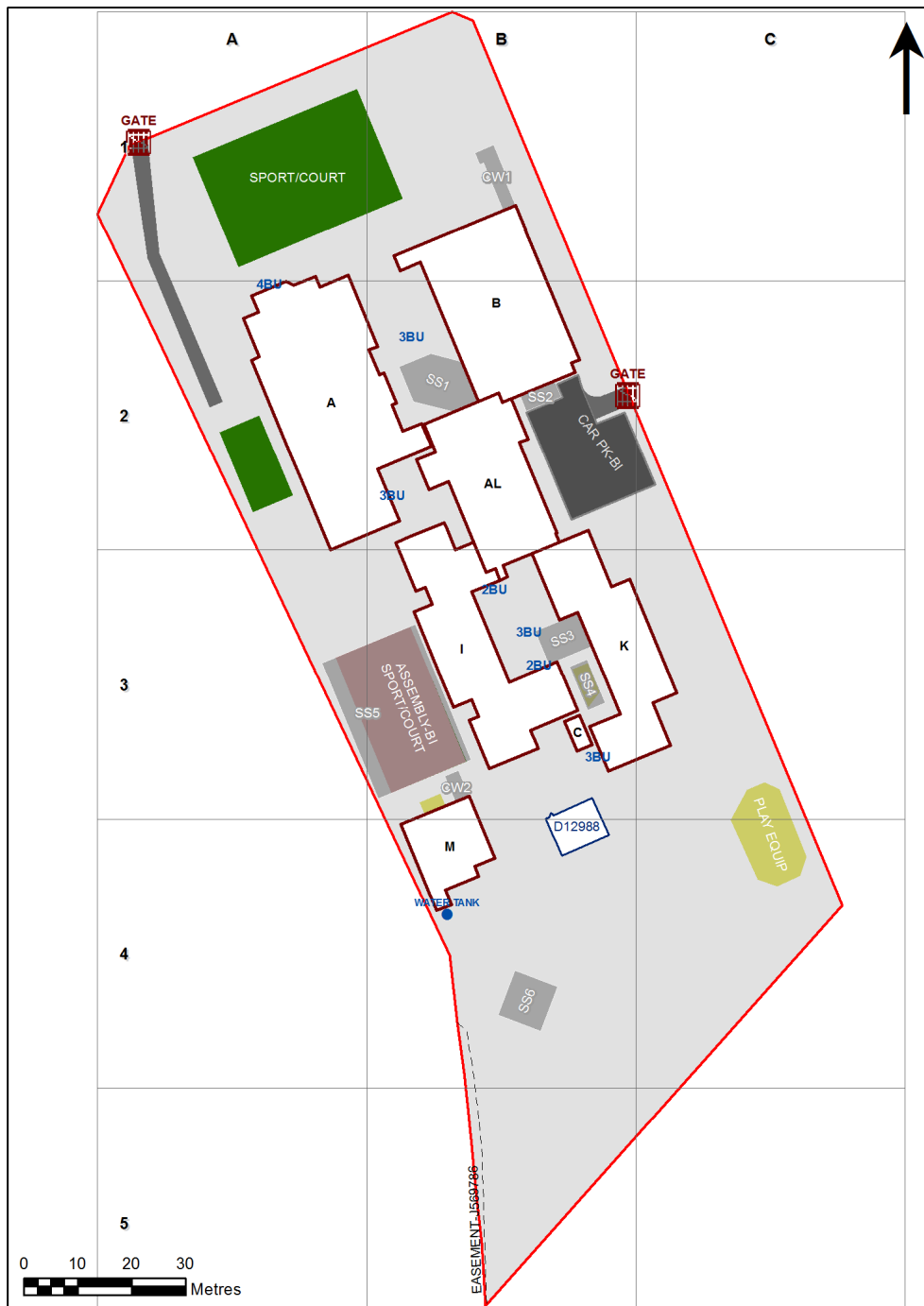


VENTILATION AUDIT REPORT

SCHOOL:	Dulwich Hill Public School (4496)
AMU REGION:	Sydney
STATE ELECTORATE:	Summer Hill
LOCAL GOVERNMENT AREA:	Inner West

4496 - Dulwich Hill Public School
Site Plan (10341)



1:880






Printed: 12-Dec-2020

Ventilation Audit Key

Category	Description
	Category A Operate this space in line with COVID safe school operations . It has the required level of natural ventilation. NB. Circulation and storage areas should not be used for groups or gatherings.
	Category B This space should be occupied at 1 person per 4m ² to comply with COVID safe school operations and the guided use of spaces . The report details the number of people who can be accommodated safely in each of the identified spaces.

Entity Location	Audit Condition Classification (Capacity)	Comment
B00A - M1001 - Withdrawal Space - 1hb - (42.61 SQM)	● Student Space (19)	
B00A - M1002 - Withdrawal Space - 1hb - (47.71 SQM)	● Student Space (22)	
B00A - R0001 - Movement - (7.21 SQM)	Not Applicable	Circulation or storage space.
B00A - R0002 - Special Programs Room - (39.59 SQM)	● Student Space (18)	
B00A - R0003 - Practical Activities - 1hb - (17.17 SQM)	● Student Space (7)	
B00A - R0004 - Movement - (7.26 SQM)	Not Applicable	Circulation or storage space.
B00A - R0005 - Special Programs Room - (39.24 SQM)	● Student Space (18)	
B00A - R0008 - Movement - (63.7 SQM)	Not Applicable	Circulation or storage space.
B00A - R0013 - Home Base - (59.38 SQM) - Teaching Space: 1	● Student Space (27)	
B00A - R0014 - Practical Activities - 1hb - (16.35 SQM)	● Student Space (7)	
B00A - R0015 - Movement - (7.02 SQM)	Not Applicable	Circulation or storage space.
B00A - R0016 - Movement - (7.03 SQM)	Not Applicable	Circulation or storage space.
B00A - R0017 - Home Base - (56.87 SQM) - Teaching Space: 1	● Student Space (26)	
B00A - R0018 - Practical Activities - 1hb - (31.86 SQM)	● Student Space (14)	
B00A - R0019 - Home Base - (57.02 SQM) - Teaching Space: 1	● Student Space (26)	
B00A - R0020 - Movement - (7.18 SQM)	Not Applicable	Circulation or storage space.
B00A - R0021 - Movement - (7.21 SQM)	Not Applicable	Circulation or storage space.
B00A - R0022 - Home Base - (58.59 SQM) - Teaching Space: 1	● Student Space (27)	
B00A - R0023 - Practical Activities - 1hb - (15.17 SQM)	● Student Space (7)	
B00A - R0026 - Movement - (43.39 SQM)	Not Applicable	Circulation or storage space.
B00A - R1001 - Practical Activities - 1hb - (21.17 SQM)	● Student Space (9)	
B00A - R1002 - Home Base - (56.27 SQM) - Teaching Space: 1	● Student Space (26)	
B00A - R1003 - Movement - (14.31 SQM)	Not Applicable	Circulation or storage space.
B00A - R1006 - Special Programs Room - (37.02 SQM)	● Student Space (17)	
B00A - R1008 - Movement - (16.87 SQM)	Not Applicable	Circulation or storage space.
B00A - R1009 - Staff Room Annexe - (10.88 SQM)	● Office (2)	
B00A - R1010 - Staff Room Annexe - (12.71 SQM)	● Office (3)	
B00A - R1012 - Movement - (87.42 SQM)	Not Applicable	Circulation or storage space.
B00A - R1013 - Practical Activities - 1hb - (13.59 SQM)	● Student Space (6)	
B00A - R1014 - Home Base - (62.23 SQM) - Teaching Space: 1	● Student Space (28)	
B00A - R1015 - Home Base - (57.02 SQM) - Teaching Space: 1	● Student Space (26)	
B00A - R1016 - Practical Activities - 1hb - (34.75 SQM)	● Student Space (16)	
B00A - R1017 - Home Base - (53.66 SQM) - Teaching Space: 1	● Student Space (24)	
B00A - R1018 - Home Base - (45.33 SQM) - Teaching Space: 1	● Student Space (21)	
B00A - R1019 - Practical Activities - 1hb - (19.68 SQM)	● Student Space (9)	
B00A - R1023 - Movement - (75.34 SQM)	Not Applicable	Circulation or storage space.
B00A - R1026 - Movement - (22 SQM)	Not Applicable	Circulation or storage space.
B00B - R0001 - Movement - (48.43 SQM)	Not Applicable	Circulation or storage space.
B00B - R0003 - Communal Space - (188.61 SQM)	● Student Space (87)	
B00B - R0004 - Movement - (36.5 SQM)	Not Applicable	Circulation or storage space.
B00B - R0008 - Movement - (57.05 SQM)	Not Applicable	Circulation or storage space.
B00B - R0014 - Canteen - (43.59 SQM)	Not Applicable	Circulation or storage space.
B00B - R0020 - Movement - (46.2 SQM)	Not Applicable	Circulation or storage space.
B00B - R0022 - Raised Platform - (39.69 SQM)	Not Applicable	Circulation or storage space.
B00I - R0001 - Movement - (5.76 SQM)	Not Applicable	Circulation or storage space.
B00I - R0002 - Home Base - (64.92 SQM) - Teaching Space: 1	● Student Space (30)	
B00I - R0003 - Practical Activities - 1hb - (12.11 SQM)	● Student Space (5)	
B00I - R0005 - Movement - (47.33 SQM)	Not Applicable	Circulation or storage space.
B00I - R0006 - Home Base - (55.13 SQM) - Teaching Space: 1	● Student Space (25)	
B00I - R0007 - Practical Activities - 1hb - (20.96 SQM)	● Student Space (9)	

Entity Location	Audit Condition Classification (Capacity)	Comment
B00I - R0008 - Movement - (5.73 SQM)	Not Applicable	Circulation or storage space.
B00I - R0009 - Movement - (5.76 SQM)	Not Applicable	Circulation or storage space.
B00I - R0010 - Home Base - (56.04 SQM) - Teaching Space: 1	● Student Space (26)	
B00I - R0011 - Practical Activities - 1hb - (22.11 SQM)	● Student Space (10)	
B00I - R0020 - Home Base - (58.38 SQM) - Teaching Space: 1	● Student Space (27)	
B00I - R0021 - Movement - (49.23 SQM)	Not Applicable	Circulation or storage space.
B00I - R1001 - Home Base - (54.48 SQM) - Teaching Space: 1	● Student Space (25)	
B00I - R1002 - Practical Activities - 1hb - (21.41 SQM)	● Student Space (9)	
B00I - R1003 - Staff Room Annexe - (12.3 SQM)	○ Office (3)	
B00I - R1004 - Movement - (50.07 SQM)	Not Applicable	Circulation or storage space.
B00I - R1005 - Movement - (15.39 SQM)	Not Applicable	Circulation or storage space.
B00I - R1006 - Home Base - (55.2 SQM) - Teaching Space: 1	● Student Space (25)	
B00I - R1007 - Practical Activities - 1hb - (21.76 SQM)	● Student Space (10)	
B00I - R1008 - Home Base - (54.91 SQM) - Teaching Space: 1	● Student Space (25)	
B00I - R1009 - Practical Activities - 1hb - (22.38 SQM)	● Student Space (10)	
B00I - R1010 - Practical Activities - 1hb - (17.52 SQM)	● Student Space (8)	
B00I - R1011 - Home Base - (65.81 SQM) - Teaching Space: 1	● Student Space (30)	
B00I - R1012 - Home Base - (65.94 SQM) - Teaching Space: 1	● Student Space (30)	
B00I - R1013 - Practical Activities - 1hb - (17.48 SQM)	● Student Space (8)	
B00K - R0001 - Practical Activities - 1hb - (13.27 SQM)	● Student Space (6)	
B00K - R0002 - Home Base - (75.81 SQM) - Teaching Space: 1	● Student Space (35)	
B00K - R0003 - Movement - (6.57 SQM)	Not Applicable	Circulation or storage space.
B00K - R0005 - Practical Activities - 1hb - (20.98 SQM)	● Student Space (9)	
B00K - R0006 - Home Base - (66.87 SQM) - Teaching Space: 1	● Student Space (31)	
B00K - R0007 - Movement - (7.14 SQM)	Not Applicable	Circulation or storage space.
B00K - R0009 - Movement - (7.15 SQM)	Not Applicable	Circulation or storage space.
B00K - R0010 - Home Base - (66.96 SQM) - Teaching Space: 1	● Student Space (31)	
B00K - R0012 - Practical Activities - 1hb - (21.23 SQM)	● Student Space (9)	
B00K - R0015 - Home Base - (68.71 SQM) - Teaching Space: 1	● Student Space (31)	
B00K - R0016 - Practical Activities - 1hb - (17.62 SQM)	● Student Space (8)	
B00K - R0019 - Movement - (27.05 SQM)	Not Applicable	Circulation or storage space.
B00K - R0020 - Movement - (18.59 SQM)	Not Applicable	Circulation or storage space.
B00M - R0001 - Home Base - (59.82 SQM) - Teaching Space: 1	● Student Space (27)	
B00M - R0003 - Practical Activities/Movement - 1hb - (19.1 SQM)	● Student Space (8)	
B00M - R0004 - Withdrawal Space - 1hb - (9.4 SQM)	● Student Space (4)	
B00M - R0005 - Special Programs Room - (32.77 SQM)	● Student Space (15)	
BOAL - R0001 - Clerical Office - (13.29 SQM)	○ Office (3)	
BOAL - R0003 - Entry Vestibule - (23.48 SQM)	Not Applicable	Circulation or storage space.
BOAL - R0004 - Clerical Office - (12.73 SQM)	○ Office (3)	
BOAL - R0005 - Sick Bay - (9.76 SQM)	● Student Space (4)	
BOAL - R0007 - Deputy Principal - (13.07 SQM)	○ Office (3)	
BOAL - R0010 - Movement - (41.72 SQM)	Not Applicable	Circulation or storage space.
BOAL - R0013 - Staff Kitchen - (10.96 SQM)	○ Office (2)	
BOAL - R0014 - Staff Room - (78.66 SQM)	○ Office (19)	
BOAL - R0015 - Duplicating Workroom - (13.39 SQM)	○ Office (3)	
BOAL - R0018 - Principal - (24.06 SQM)	○ Office (6)	
BOAL - R0019 - Deputy Principal - (16.38 SQM)	○ Office (4)	
BOAL - R0020 - Movement - (30.46 SQM)	Not Applicable	Circulation or storage space.

Entity Location	Audit Condition Classification (Capacity)	Comment
BOAL - R0021 - Movement - (34.52 SQM)	Not Applicable	Circulation or storage space.
BOAL - R1005 - Seminar/Study - (13.03 SQM)	 Office (3)	
BOAL - R1006 - Seminar/Study - (13.55 SQM)	 Office (3)	
BOAL - R1009 - Movement - (8.91 SQM)	Not Applicable	Circulation or storage space.
BOAL - R1012 - Movement - (33.44 SQM)	Not Applicable	Circulation or storage space.
BOAL - R1014 - Special Programs Room - (68.2 SQM)	 Student Space (31)	
BOAL - R1015 - Reading Area - (167.73 SQM)	 Student Space (77)	
OS 603 12988 - OS 603 12988 - Learning Unit - Standard With P.A.A. A/C - (76 SQM)	 Student Space (35)	