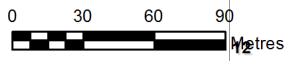
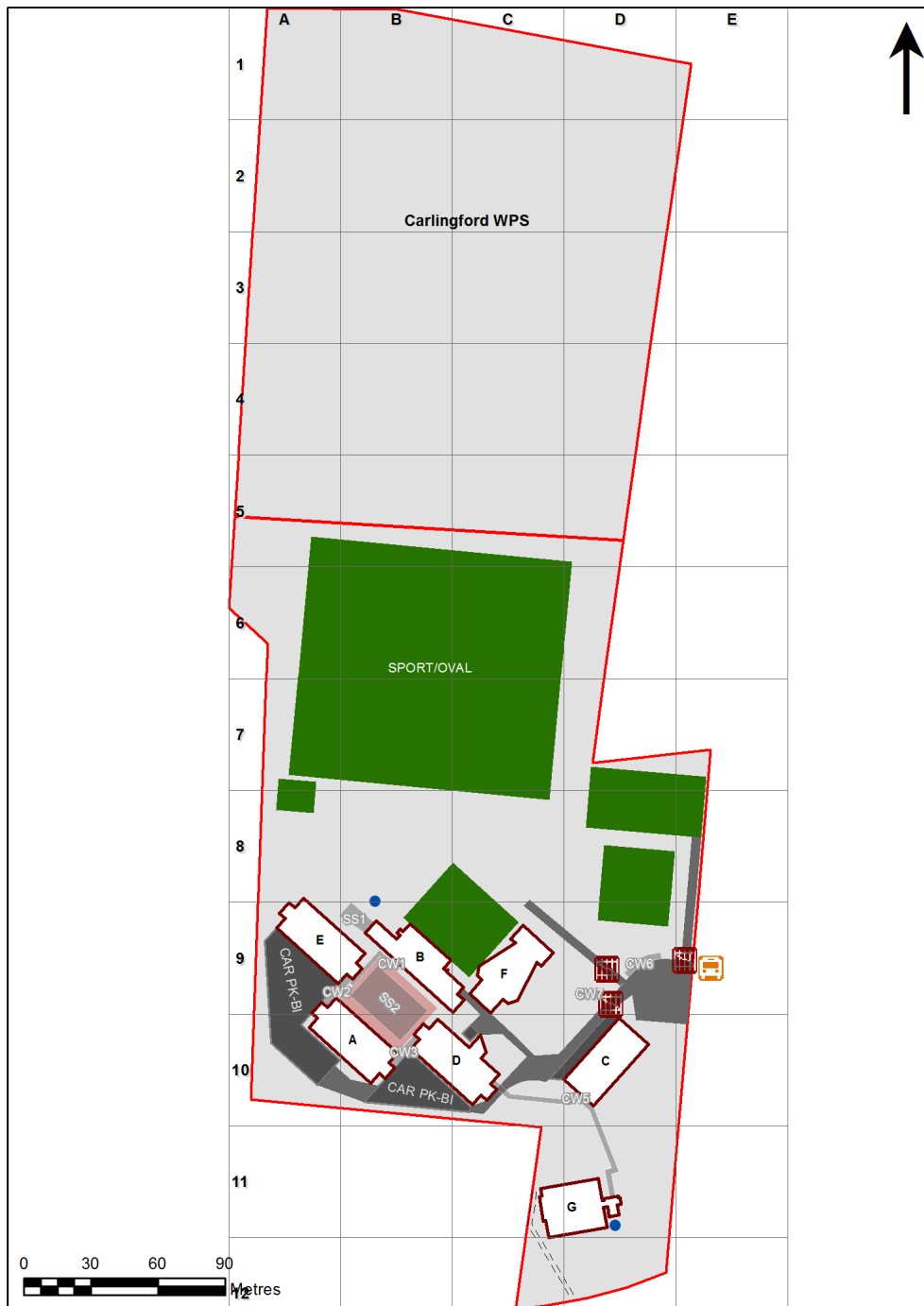


VENTILATION AUDIT REPORT

SCHOOL:	Cumberland High School (8905)
AMU REGION:	Western Sydney
STATE ELECTORATE:	Parramatta
LOCAL GOVERNMENT AREA:	Parramatta

8905 - Cumberland High School
Site Plan (12377)



1:2,120

Printed: 19-Dec-2020

Ventilation Audit Key

Category	Description
	Category A Operate this space in line with COVID safe school operations . It has the required level of natural ventilation. NB. Circulation and storage areas should not be used for groups or gatherings.
	Category B This space should be occupied at 1 person per 4m ² to comply with COVID safe school operations and the guided use of spaces . The report details the number of people who can be accommodated safely in each of the identified spaces.

Entity Location	Audit Condition Classification (Capacity)	Comment
B00A - R0001 - Art Learning Space - (71.6 SQM) - Teaching Space: 1	● Student Space (33)	
B00A - R0005 - Art Learning Space - (57.98 SQM) - Teaching Space: 1	● Student Space (26)	
B00A - R0006 - Darkroom Space - (16.13 SQM)	● Office (4)	
B00A - R0009 - Art Learning Space - (58.35 SQM) - Teaching Space: 1	● Student Space (27)	
B00A - R0011 - Movement - (7.71 SQM)	Not Applicable	Circulation or storage space.
B00A - R0012 - Staff Study - (17.86 SQM)	● Office (4)	
B00A - R0016 - Staff Study - (24.2 SQM)	● Office (6)	
B00A - R0023 - Food Technology L.S. - (65.18 SQM) - Teaching Space: 1	● Student Space (30)	
B00A - R0024 - Movement - (7.61 SQM)	Not Applicable	Circulation or storage space.
B00A - R0026 - Movement - (103.9 SQM)	Not Applicable	Circulation or storage space.
B00A - R0030 - Food Technology L.S. - (90.3 SQM) - Teaching Space: 1	● Student Space (41)	
B00A - R0031 - Preparation - Materials - (9.68 SQM)	Not Applicable	Circulation or storage space.
B00A - R1001 - General Learning Space - (51.86 SQM) - Teaching Space: 1	● Student Space (24)	
B00A - R1005 - Staff Study - (25.36 SQM)	● Office (6)	
B00A - R1006 - Design L.S. - (64.82 SQM) - Teaching Space: 1	● Student Space (30)	
B00A - R1010 - Design L.S. - (64.82 SQM) - Teaching Space: 1	● Student Space (30)	
B00A - R1012 - General Learning Space - (51.86 SQM) - Teaching Space: 1	● Student Space (24)	
B00A - R1013 - General Learning Space - (51.86 SQM) - Teaching Space: 1	● Student Space (24)	
B00A - R1014 - Performance Workspace - (51.86 SQM) - Teaching Space: 1	● Student Space (24)	
B00A - R1018 - Computer Learning Space - (51.86 SQM) - Teaching Space: 1	● Student Space (24)	
B00A - R1020 - Movement - (104.4 SQM)	Not Applicable	Circulation or storage space.
B00B - R0003 - Movement - (236.98 SQM)	Not Applicable	Circulation or storage space.
B00B - R0005 - Student Canteen - (45.87 SQM)	Not Applicable	Circulation or storage space.
B00B - R0009 - Movement - (16.65 SQM)	Not Applicable	Circulation or storage space.
B00B - R0010 - Gymnasium - (52.68 SQM)	● Student Space (24)	
B00B - R9002 - General Assistants - (13.67 SQM)	● Office (3)	
B00C - R0001 - Materials Technology L.S. - (77.92 SQM) - Teaching Space: 1	● Student Space (36)	
B00C - R0003 - Staff Study - (25.42 SQM)	● Office (6)	
B00C - R0005 - Materials Technology L.S. - (78.14 SQM) - Teaching Space: 1	● Student Space (36)	
B00C - R0010 - Darkroom Space - (12.44 SQM)	● Office (3)	
B00C - R0011 - Design L.S. - (50.88 SQM) - Teaching Space: 1	● Student Space (23)	
B00C - R0014 - Design L.S. - (51.85 SQM) - Teaching Space: 1	● Student Space (24)	
B00C - R0016 - Materials Technology L.S. - (78.22 SQM) - Teaching Space: 1	● Student Space (36)	
B00C - R0017 - Metal Technology Bay - (10.75 SQM)	Not Applicable	Circulation or storage space.
B00C - R0019 - Welding Area - (11.44 SQM)	Not Applicable	Circulation or storage space.
B00C - R0021 - Movement - (88.58 SQM)	Not Applicable	Circulation or storage space.
B00D - R0001 - Commonroom - (98.32 SQM)	● Office (24)	
B00D - R0002 - Duplicating Workroom - (35.48 SQM)	● Office (8)	
B00D - R0003 - Administration - Clerical - (37.23 SQM)	● Office (9)	
B00D - R0006 - Public Entry - (26.77 SQM)	Not Applicable	Circulation or storage space.
B00D - R0008 - Movement - (15.29 SQM)	Not Applicable	Circulation or storage space.
B00D - R0011 - Principal Office - (29.5 SQM)	● Office (7)	
B00D - R0012 - Interview/Office - Type 1 - (19.4 SQM)	● Office (4)	
B00D - R0014 - Movement - (14.84 SQM)	Not Applicable	Circulation or storage space.
B00D - R0017 - Interview/Office - Type 1 - (14.85 SQM)	● Office (3)	
B00D - R0018 - Seminar - (18.29 SQM)	● Office (4)	
B00D - R0019 - Interview/Office - Type 1 - (18.35 SQM)	● Office (4)	
B00D - R0020 - Ancillary Staff - (25.29 SQM)	● Office (6)	
B00D - R0022 - Clinic - Boys - (15.55 SQM)	● Office (3)	

Entity Location	Audit Condition Classification (Capacity)	Comment
B00D - R0025 - Clinic - Girls - (17.98 SQM)	Office (4)	
B00D - R0029 - Staff Study - (16.39 SQM)	Office (4)	
B00D - R0030 - Deputy Principal Office - (16.58 SQM)	Office (4)	
B00D - R0032 - Movement - (14.79 SQM)	Not Applicable	Circulation or storage space.
B00D - R0034 - Movement - (115.98 SQM)	Not Applicable	Circulation or storage space.
B00D - R1001 - Music Learning Space - (51.87 SQM) - Teaching Space: 1	Student Space (24)	
B00D - R1004 - General Learning Space - (38.53 SQM) - Teaching Space: 1	Student Space (17)	
B00D - R1005 - General Learning Space - (37.26 SQM) - Teaching Space: 1	Student Space (17)	
B00D - R1007 - General Learning Space - (51.86 SQM) - Teaching Space: 1	Student Space (24)	
B00D - R1010 - General Learning Space - (51.86 SQM) - Teaching Space: 1	Student Space (24)	
B00D - R1012 - Staff Study - (25.32 SQM)	Office (6)	
B00D - R1016 - General Learning Space - (52.08 SQM) - Teaching Space: 1	Student Space (24)	
B00D - R1017 - Staff Study - (25.31 SQM)	Office (6)	
B00D - R1018 - General Learning Space - (45.42 SQM) - Teaching Space: 1	Student Space (21)	
B00D - R1019 - Seminar - (18.95 SQM)	Office (4)	
B00D - R1020 - Music Learning Space - (78.26 SQM) - Teaching Space: 1	Student Space (36)	
B00D - R1022 - Movement - (95.05 SQM)	Not Applicable	Circulation or storage space.
B00E - R0001 - General Learning Space - (51.86 SQM) - Teaching Space: 1	Student Space (24)	
B00E - R0002 - General Learning Space - (51.86 SQM) - Teaching Space: 1	Student Space (24)	
B00E - R0003 - Staff Study - (25.5 SQM)	Office (6)	
B00E - R0008 - General Learning Space - (38.53 SQM)	Student Space (17)	
B00E - R0009 - General Learning Space - (51.86 SQM) - Teaching Space: 1	Student Space (24)	
B00E - R0010 - Movement - (14.86 SQM)	Not Applicable	Circulation or storage space.
B00E - R0012 - Laboratory L.S. - (91.47 SQM) - Teaching Space: 1	Student Space (42)	
B00E - R0013 - Preparation - (25.5 SQM)	Not Applicable	Circulation or storage space.
B00E - R0014 - Laboratory L.S. - (91.49 SQM) - Teaching Space: 1	Student Space (42)	
B00E - R0015 - General Learning Space - (51.87 SQM) - Teaching Space: 1	Student Space (24)	
B00E - R0016 - Movement - (14.85 SQM)	Not Applicable	Circulation or storage space.
B00E - R0018 - Movement - (112.2 SQM)	Not Applicable	Circulation or storage space.
B00E - R1001 - General Learning Space - (51.86 SQM) - Teaching Space: 1	Student Space (24)	
B00E - R1002 - General Learning Space - (51.86 SQM) - Teaching Space: 1	Student Space (24)	
B00E - R1003 - Staff Study - (25.5 SQM)	Office (6)	
B00E - R1007 - Computer Learning Space - (38.54 SQM)	Student Space (17)	
B00E - R1008 - General Learning Space - (51.87 SQM) - Teaching Space: 1	Student Space (24)	
B00E - R1010 - General Learning Space - (51.86 SQM) - Teaching Space: 1	Student Space (24)	
B00E - R1011 - General Learning Space - (51.86 SQM) - Teaching Space: 1	Student Space (24)	
B00E - R1012 - General Learning Space - (51.86 SQM) - Teaching Space: 1	Student Space (24)	
B00E - R1013 - General Learning Space - (51.85 SQM) - Teaching Space: 1	Student Space (24)	
B00E - R1014 - General Learning Space - (51.86 SQM) - Teaching Space: 1	Student Space (24)	
B00E - R1016 - Movement - (102.37 SQM)	Not Applicable	Circulation or storage space.
B00F - M0004 - Movement - (8.76 SQM)	Not Applicable	Circulation or storage space.
B00F - R0001 - Entry - (59.63 SQM)	Not Applicable	Circulation or storage space.
B00F - R0003 - Staff Kitchen - (8.45 SQM)	Office (2)	
B00F - R0004 - Multi-Purpose Space - (390.47 SQM)	Student Space (181)	
B00F - R0007 - Stage - (95.1 SQM)	Not Applicable	Circulation or storage space.
B00F - R0010 - Movement - (19.35 SQM)	Not Applicable	Circulation or storage space.
B00F - R9001 - General Assistants - (13.87 SQM)	Office (3)	
B00G - M1001 - Senior Seminar - (38.24 SQM)	Office (9)	

Entity Location	Audit Condition Classification (Capacity)	Comment
B00G - M1003 - Main Area - (69.48 SQM)	Not Applicable	Circulation or storage space.
B00G - M1005 - Seminar - (15.22 SQM)	Office (3)	
B00G - R0001 - Laboratory L.S. - (91.13 SQM) - Teaching Space: 1	Student Space (42)	
B00G - R0004 - Preparation - (31.26 SQM)	Not Applicable	Circulation or storage space.
B00G - R0005 - Laboratory L.S. - (91.14 SQM) - Teaching Space: 1	Student Space (42)	
B00G - R0008 - Laboratory L.S. - (91.44 SQM) - Teaching Space: 1	Student Space (42)	
B00G - R0011 - Staff Study - (31.56 SQM)	Office (7)	
B00G - R0012 - Laboratory L.S. - (91.45 SQM) - Teaching Space: 1	Student Space (42)	
B00G - R0014 - Movement - (40.53 SQM)	Not Applicable	Circulation or storage space.
B00G - R0017 - Movement - (28.04 SQM)	Not Applicable	Circulation or storage space.
B00G - R1001 - Study Space - (72.66 SQM)	Not Applicable	Circulation or storage space.
B00G - R1002 - Main Area - (286.38 SQM)	Not Applicable	Circulation or storage space.
B00G - R1003 - Seminar - (12.88 SQM)	Office (3)	
B00G - R1004 - Seminar - (12.14 SQM)	Office (3)	
B00G - R1010 - Audio Visual Workroom - (28.5 SQM)	Student Space (13)	
B00G - R1013 - Workroom - (17.6 SQM)	Office (4)	
B00G - R1017 - Entry - (33.8 SQM)	Not Applicable	Circulation or storage space.
B00G - R1019 - Movement - (24.64 SQM)	Not Applicable	Circulation or storage space.
B00G - R1022 - Study Space - (25.19 SQM)	Not Applicable	Circulation or storage space.
OS 520 18024 - OS 520 18024 - Staff Study - (57 SQM)	Office (14)	