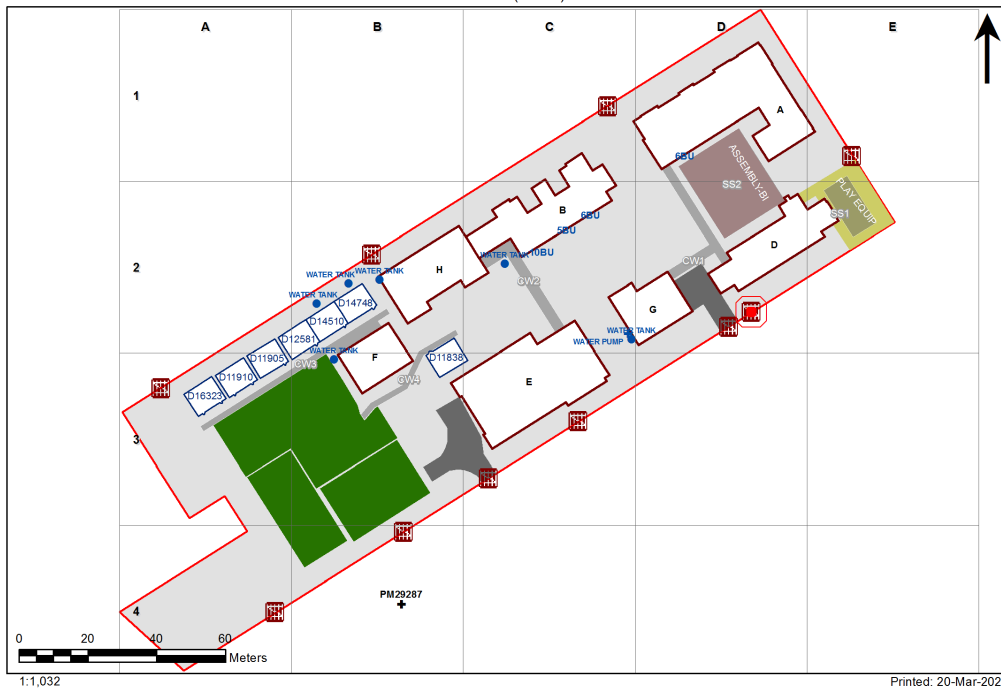


VENTILATION AUDIT REPORT

SCHOOL:	Carlton Public School (1512)
AMU REGION:	Sydney
STATE ELECTORATE:	Kogarah
LOCAL GOVERNMENT AREA:	Bayside

1512 - Carlton Public School
Site Plan (10274)












Ventilation Audit Key

Category	Description
	Category A Operate this space in line with COVID safe school operations . It has the required level of natural ventilation. NB. Circulation and storage areas should not be used for groups or gatherings.
	Category B This space should be occupied at 1 person per 4m ² to comply with COVID safe school operations and the guided use of spaces . The report details the number of people who can be accommodated safely in each of the identified spaces.

Entity Location	Audit Condition Classification (Capacity)	Comment
B00A - R0001 - Home Base - (47.65 SQM) - Teaching Space: 1	● Student Space (22)	
B00A - R0002 - Home Base - (46.96 SQM) - Teaching Space: 1	● Student Space (21)	
B00A - R0017 - Home Base - (47.39 SQM) - Teaching Space: 1	● Student Space (21)	
B00A - R0018 - Home Base - (47.33 SQM) - Teaching Space: 1	● Student Space (21)	
B00A - R0020 - Movement - (182.51 SQM)	Not Applicable	Circulation or storage space.
B00A - R0021 - Movement - (19.22 SQM)	Not Applicable	Circulation or storage space.
B00A - R0025 - Home Base - (42.17 SQM) - Teaching Space: 1	● Student Space (19)	
B00A - R0027 - Home Base - (47.4 SQM) - Teaching Space: 1	● Student Space (21)	
B00A - R0028 - Home Base - (48.24 SQM) - Teaching Space: 1	● Student Space (22)	
B00A - R0029 - Home Base - (48.08 SQM) - Teaching Space: 1	● Student Space (22)	
B00A - R0030 - Special Programs Room - (57.65 SQM)	● Student Space (26)	
B00A - R1001 - Home Base - (49.68 SQM) - Teaching Space: 1	● Student Space (23)	
B00A - R1002 - Home Base - (47.69 SQM) - Teaching Space: 1	● Student Space (22)	
B00A - R1003 - Home Base - (48.02 SQM) - Teaching Space: 1	● Student Space (22)	
B00A - R1004 - Home Base - (49.81 SQM) - Teaching Space: 1	● Student Space (23)	
B00A - R1005 - Movement - (14.03 SQM)	Not Applicable	Circulation or storage space.
B00A - R1007 - Special Programs Room - (16.13 SQM)	● Student Space (7)	
B00A - R1008 - Practical Activities - 1hb - (72.21 SQM)	● Student Space (33)	
B00A - R1009 - Interview - (16.04 SQM)	● Office (4)	
B00A - R1011 - Home Base - (49.06 SQM) - Teaching Space: 1	● Student Space (22)	
B00A - R1012 - Home Base - (48.81 SQM) - Teaching Space: 1	● Student Space (22)	
B00A - R1013 - Home Base - (48.93 SQM) - Teaching Space: 1	● Student Space (22)	
B00A - R1014 - Home Base - (49 SQM) - Teaching Space: 1	● Student Space (22)	
B00A - R1016 - Movement - (153.98 SQM)	Not Applicable	Circulation or storage space.
B00A - R1017 - Movement - (29.97 SQM)	Not Applicable	Circulation or storage space.
B00A - R9003 - Movement - (5.73 SQM)	Not Applicable	Circulation or storage space.
B00A - R9005 - Movement - (14.46 SQM)	Not Applicable	Circulation or storage space.
B00A - R9008 - Special Programs Room - (64.3 SQM)	● Student Space (29)	
B00A - R9009 - Special Programs Room - (65.47 SQM)	● Student Space (30)	
B00A - R9013 - Movement - (12.53 SQM)	Not Applicable	Circulation or storage space.
B00B - R0001 - Movement - (8.76 SQM)	Not Applicable	Circulation or storage space.
B00B - R0003 - Home Base - (47.49 SQM) - Teaching Space: 1	● Student Space (22)	
B00B - R0004 - Home Base - (47.74 SQM) - Teaching Space: 1	● Student Space (22)	
B00B - R0005 - Home Base - (47.55 SQM) - Teaching Space: 1	● Student Space (22)	
B00B - R0006 - Home Base - (47.55 SQM) - Teaching Space: 1	● Student Space (22)	
B00B - R0016 - Movement - (12.54 SQM)	Not Applicable	Circulation or storage space.
B00B - R0017 - Movement - (71.14 SQM)	Not Applicable	Circulation or storage space.
B00B - R0019 - Staff Room Annexe - (21.2 SQM)	● Office (5)	
B00B - R0020 - Movement - (12.43 SQM)	Not Applicable	Circulation or storage space.
B00B - R0029 - Movement - (7.55 SQM)	Not Applicable	Circulation or storage space.
B00B - R1001 - Home Base - (49.39 SQM) - Teaching Space: 1	● Student Space (22)	
B00B - R1002 - Home Base - (49.33 SQM) - Teaching Space: 1	● Student Space (22)	
B00B - R1003 - Home Base - (49.21 SQM) - Teaching Space: 1	● Student Space (22)	
B00B - R1004 - Home Base - (48.74 SQM) - Teaching Space: 1	● Student Space (22)	
B00B - R1007 - Movement - (61.83 SQM)	Not Applicable	Circulation or storage space.
B00D - R0001 - Staff Room - (63.7 SQM)	● Office (15)	
B00D - R0002 - Staff Room Annexe - (22.85 SQM)	● Office (5)	
B00D - R0009 - Principal - (17.07 SQM)	● Office (4)	
B00D - R0010 - Duplicating Workroom - (33.13 SQM)	● Office (8)	

Entity Location	Audit Condition Classification (Capacity)	Comment
B00D - R0011 - Entry Vestibule - (17.83 SQM)	Not Applicable	Circulation or storage space.
B00D - R0012 - Movement - (12.33 SQM)	Not Applicable	Circulation or storage space.
B00D - R0013 - Movement - (21.18 SQM)	Not Applicable	Circulation or storage space.
B00D - R0017 - Clerical Office - (17.77 SQM)	Office (4)	
B00D - R0018 - Sick Bay - (8.21 SQM)	Student Space (3)	
B00D - R0020 - Interview - (13.09 SQM)	Office (3)	
B00D - R0021 - Deputy Principal - (13.24 SQM)	Office (3)	
B00D - R0022 - Deputy Principal - (13.12 SQM)	Office (3)	
B00D - R0026 - Movement - (38.1 SQM)	Not Applicable	Circulation or storage space.
B00D - R1001 - Reading Area - (219.41 SQM)	Student Space (101)	
B00D - R1004 - Movement - (24.03 SQM)	Not Applicable	Circulation or storage space.
B00D - R9002 - Movement - (8.03 SQM)	Not Applicable	Circulation or storage space.
B00E - R0002 - Communal Space - (201.23 SQM)	Student Space (93)	
B00E - R0004 - Canteen - (42.09 SQM)	Not Applicable	Circulation or storage space.
B00E - R0010 - Movement - (6.72 SQM)	Not Applicable	Circulation or storage space.
B00E - R0011 - Movement - (7.39 SQM)	Not Applicable	Circulation or storage space.
B00E - R0013 - Raised Platform - (54.14 SQM)	Not Applicable	Circulation or storage space.
B00E - R0014 - Movement - (26.95 SQM)	Not Applicable	Circulation or storage space.
B00E - R0018 - Movement - (6.68 SQM)	Not Applicable	Circulation or storage space.
B00F - R0001 - Movement - (38.48 SQM)	Not Applicable	Circulation or storage space.
B00F - R0002 - Practical Activities - 1hb - (19.41 SQM)	Student Space (9)	
B00F - R0004 - Home Base - (59.21 SQM) - Teaching Space: 1	Student Space (27)	
B00F - R0005 - Withdrawal Space - 2hb - (11.36 SQM)	Student Space (5)	
B00F - R0006 - Home Base - (59.21 SQM) - Teaching Space: 1	Student Space (27)	
B00F - R0008 - Practical Activities - 1hb - (19.41 SQM)	Student Space (9)	
B00G - R0002 - Practical Activities - 1hb - (18.24 SQM)	Student Space (8)	
B00G - R0004 - Home Base - (60.73 SQM) - Teaching Space: 1	Student Space (28)	
B00G - R0005 - Withdrawal Space - 2hb - (11.65 SQM)	Student Space (5)	
B00G - R0006 - Home Base - (61.01 SQM) - Teaching Space: 1	Student Space (28)	
B00G - R0007 - Practical Activities - 1hb - (19.06 SQM)	Student Space (8)	
B00G - R1002 - Practical Activities - 1hb - (17.56 SQM)	Student Space (8)	
B00G - R1004 - Home Base - (60.97 SQM) - Teaching Space: 1	Student Space (28)	
B00G - R1005 - Withdrawal Space - 2hb - (11.55 SQM)	Student Space (5)	
B00G - R1006 - Home Base - (61.06 SQM) - Teaching Space: 1	Student Space (28)	
B00G - R1007 - Practical Activities - 1hb - (18.47 SQM)	Student Space (8)	
B00H - R0001 - Home Base - (60.18 SQM) - Teaching Space: 1	Student Space (27)	
B00H - R0003 - Practical Activities - 1hb - (19.37 SQM)	Student Space (8)	
B00H - R0004 - Withdrawal Space - 2hb - (12.07 SQM)	Student Space (5)	
B00H - R0005 - Home Base - (60.29 SQM) - Teaching Space: 1	Student Space (27)	
B00H - R0007 - Practical Activities - 1hb - (19.32 SQM)	Student Space (8)	
B00H - R0008 - Home Base - (59.61 SQM) - Teaching Space: 1	Student Space (27)	
B00H - R0010 - Withdrawal Space - 1hb - (8.81 SQM)	Student Space (4)	
B00H - R0011 - Practical Activities - 1hb - (19.29 SQM)	Student Space (8)	
B00H - R1001 - Home Base - (60.1 SQM) - Teaching Space: 1	Student Space (27)	
B00H - R1003 - Practical Activities - 1hb - (19.34 SQM)	Student Space (8)	
B00H - R1004 - Withdrawal Space - 2hb - (12.55 SQM)	Student Space (5)	
B00H - R1005 - Home Base - (60.33 SQM) - Teaching Space: 1	Student Space (27)	
B00H - R1007 - Practical Activities - 1hb - (19.08 SQM)	Student Space (8)	
B00H - R1008 - Home Base - (58.96 SQM) - Teaching Space: 1	Student Space (27)	

Entity Location	Audit Condition Classification (Capacity)	Comment
B00H - R1010 - Withdrawal Space - 1hb - (8.97 SQM)	 Student Space (4)	
B00H - R1011 - Practical Activities - 1hb - (19.4 SQM)	 Student Space (9)	
OS 601 11838 - OS 601 11838 - Learning Unit - Standard/Withdrawal - (76 SQM)	 Student Space (35)	
OS 601 11905 - OS 601 11905 - Learning Unit - Standard/Withdrawal - (76 SQM)	 Student Space (35)	
OS 601 12581 - OS 601 12581 - Learning Unit - Standard/Withdrawal - (76 SQM)	 Student Space (35)	
OS 601 14510 - OS 601 14510 - Learning Unit - Standard/Withdrawal - (76 SQM)	 Student Space (35)	
OS 601 14748 - OS 601 14748 - Learning Unit - Standard/Withdrawal - (76 SQM)	 Student Space (35)	
OS 751 11910 - OS 751 11910 - Learning Unit - ESL - (76 SQM)	 Student Space (35)	
OS 751 16323 - OS 751 16323 - Learning Unit - ESL - (76 SQM)	 Student Space (35)	