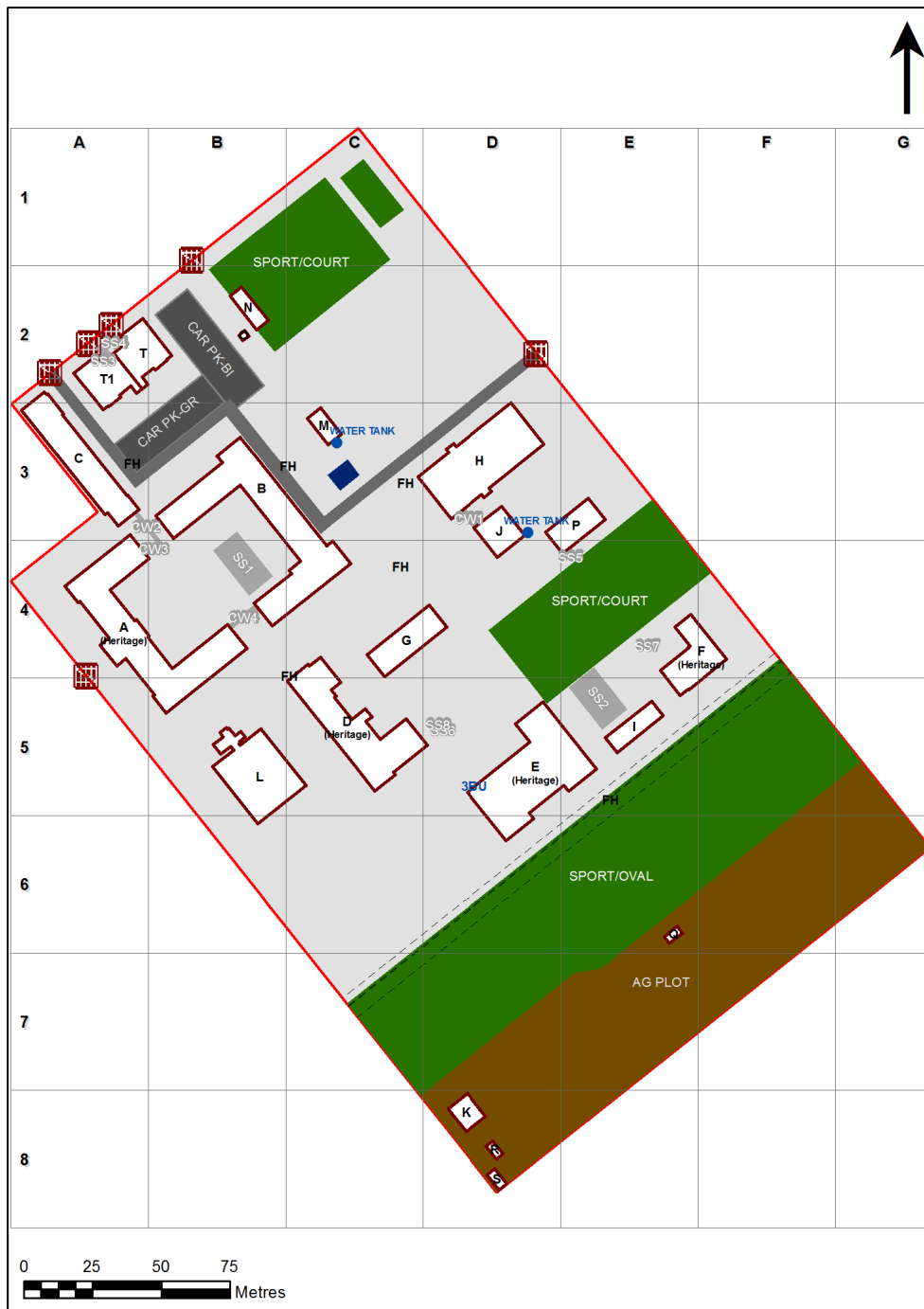


# VENTILATION AUDIT REPORT

<b>SCHOOL:</b>	<b>Broken Hill High School (8105)</b>
<b>AMU REGION:</b>	<b>North Western NSW</b>
<b>STATE ELECTORATE:</b>	<b>Barwon</b>
<b>LOCAL GOVERNMENT AREA:</b>	<b>Broken Hill</b>

8105 - Broken Hill High School  
Site Plan (12398)



1:1,727

Printed: 24-Jul-2021

## Ventilation Audit Key

Category	Description
	Category A Operate this space in line with <a href="#">COVID safe school operations</a> . It has the required level of natural ventilation. NB. Circulation and storage areas should not be used for groups or gatherings.
	Category B This space should be occupied at 1 person per 4m <sup>2</sup> to comply with <a href="#">COVID safe school operations and the guided use of spaces</a> . The report details the number of people who can be accommodated safely in each of the identified spaces.

Entity Location	Audit Condition Classification (Capacity)	Comment
B00A - R0001 - Senior Study - (44.41 SQM)	Office (11)	
B00A - R0002 - General Learning Space - (48.49 SQM) - Teaching Space: 1	Student Space (22)	
B00A - R0003 - General Learning Space - (44.28 SQM) - Teaching Space: 1	Student Space (20)	
B00A - R0004 - General Learning Space - (44.27 SQM) - Teaching Space: 1	Student Space (20)	
B00A - R0006 - General Learning Space - (48.83 SQM) - Teaching Space: 1	Student Space (22)	
B00A - R0007 - General Learning Space - (48.55 SQM) - Teaching Space: 1	Student Space (22)	
B00A - R0008 - Staff Study - (20.31 SQM)	Office (5)	
B00A - R0009 - Principal Office - (23.37 SQM)	Office (5)	
B00A - R0011 - Administration - Clerical - (45.43 SQM)	Office (11)	
B00A - R0012 - Administration - Clerical - (12.09 SQM)	Office (3)	
B00A - R0013 - Duplicating Workroom - (31.18 SQM)	Office (7)	
B00A - R0014 - Movement - (114.91 SQM)	Not Applicable	Circulation or storage space.
B00A - R0015 - Movement - (51.55 SQM)	Not Applicable	Circulation or storage space.
B00A - R0016 - Public Entry - (42.6 SQM)	Not Applicable	Circulation or storage space.
B00A - R0019 - Movement - (51.87 SQM)	Not Applicable	Circulation or storage space.
B00A - R0020 - Ancillary Staff - (22.37 SQM)	Office (5)	
B00A - R0021 - Senior Seminar - (12.19 SQM)	Office (3)	
B00A - R0022 - Interview/Office - Type 1 - (12.38 SQM)	Office (3)	
B00A - R0025 - Interview/Office - Type 1 - (11.57 SQM)	Office (2)	
B00A - R0026 - Movement - (9.85 SQM)	Not Applicable	Circulation or storage space.
B00A - R0027 - Clinic - (15.99 SQM)	Office (3)	
B00A - R0029 - Staff Study - (13.08 SQM)	Office (3)	
B00A - R0030 - Duplicating Workroom - (8.97 SQM)	Office (2)	
B00A - R0031 - Movement - (16.65 SQM)	Not Applicable	Circulation or storage space.
B00A - R0032 - Deputy Principal Office - (14.99 SQM)	Office (3)	
B00A - R0033 - Staff Study - (12.79 SQM)	Office (3)	
B00A - R0038 - Movement - (88.26 SQM)	Not Applicable	Circulation or storage space.
B00A - R0039 - Staff Study - (21.6 SQM)	Office (5)	
B00B - R0009 - Student Canteen - (71.21 SQM)	Not Applicable	Circulation or storage space.
B00B - R0018 - Music Learning Space - (55.62 SQM) - Teaching Space: 1	Student Space (25)	
B00B - R0019 - Music Learning Space - (55.39 SQM) - Teaching Space: 1	Student Space (25)	
B00B - R0021 - Performance Workspace - (108.23 SQM) - Teaching Space: 1	Student Space (50)	
B00B - R0022 - Movement - (22.98 SQM)	Not Applicable	Circulation or storage space.
B00B - R0023 - Movement - (429.73 SQM)	Not Applicable	Circulation or storage space.
B00B - R0024 - Movement - (7.75 SQM)	Not Applicable	Circulation or storage space.
B00B - R1004 - Staff Study - (52.76 SQM)	Office (13)	
B00B - R1005 - General Learning Space - (73.04 SQM) - Teaching Space: 1	Student Space (33)	
B00B - R1006 - Design L.S. - (71.45 SQM) - Teaching Space: 1	Student Space (33)	
B00B - R1008 - Laboratory L.S. - (84.31 SQM) - Teaching Space: 1	Student Space (39)	
B00B - R1010 - Preparation - (12.62 SQM)	Not Applicable	Circulation or storage space.
B00B - R1011 - General Learning Space - (45.45 SQM) - Teaching Space: 1	Student Space (21)	
B00B - R1012 - Preparation - (25.84 SQM)	Not Applicable	Circulation or storage space.
B00B - R1013 - Laboratory L.S. - (84.1 SQM) - Teaching Space: 1	Student Space (39)	
B00B - R1014 - Staff Study - (47.73 SQM)	Office (11)	
B00B - R1016 - Staff Study - (12.43 SQM)	Office (3)	
B00B - R1020 - Laboratory L.S. - (86.26 SQM) - Teaching Space: 1	Student Space (40)	
B00B - R1021 - Preparation - (28.82 SQM)	Not Applicable	Circulation or storage space.
B00B - R1022 - General Learning Space - (68.42 SQM) - Teaching Space: 1	Student Space (31)	
B00B - R1023 - Movement - (285.88 SQM)	Not Applicable	Circulation or storage space.

Entity Location	Audit Condition Classification (Capacity)	Comment
B00B - R2001 - Commonroom - (191.19 SQM)	Office (47)	
B00B - R2002 - General Learning Space - (72.93 SQM) - Teaching Space: 1	Student Space (33)	
B00B - R2004 - General Learning Space - (54.15 SQM) - Teaching Space: 1	Student Space (25)	
B00B - R2005 - General Learning Space - (53.64 SQM) - Teaching Space: 1	Student Space (24)	
B00B - R2006 - General Learning Space - (53.85 SQM) - Teaching Space: 1	Student Space (24)	
B00B - R2007 - General Learning Space - (53.86 SQM) - Teaching Space: 1	Student Space (24)	
B00B - R2008 - General Learning Space - (54.15 SQM) - Teaching Space: 1	Student Space (25)	
B00B - R2009 - Staff Study - (48.08 SQM)	Office (12)	
B00B - R2011 - Staff Study - (12.6 SQM)	Office (3)	
B00B - R2012 - Staff Study - (8.16 SQM)	Office (2)	
B00B - R2015 - General Learning Space - (56.9 SQM) - Teaching Space: 1	Student Space (26)	
B00B - R2016 - General Learning Space - (53.79 SQM) - Teaching Space: 1	Student Space (24)	
B00B - R2017 - General Learning Space - (75.87 SQM) - Teaching Space: 1	Student Space (35)	
B00B - R2018 - Movement - (244.06 SQM)	Not Applicable	Circulation or storage space.
B00C - R0003 - General Assistants - (12.44 SQM)	Office (3)	
B00C - R0004 - Movement - (25.92 SQM)	Not Applicable	Circulation or storage space.
B00C - R0006 - Materials Technology L.S. - (90.04 SQM) - Teaching Space: 1	Student Space (41)	
B00C - R0015 - Movement - (81.47 SQM)	Not Applicable	Circulation or storage space.
B00C - R0018 - Metal Technology Bay - (108.82 SQM)	Not Applicable	Circulation or storage space.
B00C - R0019 - Metal Technology Bay - (104.96 SQM)	Not Applicable	Circulation or storage space.
B00C - R1004 - Movement - (23.51 SQM)	Not Applicable	Circulation or storage space.
B00C - R1007 - Materials Technology L.S. - (84.24 SQM) - Teaching Space: 1	Student Space (39)	
B00C - R1008 - Wood Technology Bay - (14.14 SQM)	Not Applicable	Circulation or storage space.
B00C - R1010 - Materials Technology L.S. - (85.65 SQM) - Teaching Space: 1	Student Space (39)	
B00C - R1012 - Staff Study - (33.19 SQM)	Office (8)	
B00C - R1013 - Duplicating Workroom - (22.01 SQM)	Office (5)	
B00C - R1014 - Design L.S. - (54.46 SQM) - Teaching Space: 1	Student Space (25)	
B00C - R1016 - Movement - (85.38 SQM)	Not Applicable	Circulation or storage space.
B00C - R9002 - Movement - (25 SQM)	Not Applicable	Circulation or storage space.
B00D - R0008 - Special Learning Space - (31.43 SQM) - Teaching Space: 1	Student Space (14)	
B00D - R0009 - Practical Activity Area - (34.44 SQM)	Student Space (15)	
B00D - R0013 - Movement - (6.46 SQM)	Not Applicable	Circulation or storage space.
B00D - R0014 - Movement - (9.19 SQM)	Not Applicable	Circulation or storage space.
B00D - R0020 - Study Space - (26.8 SQM)	Not Applicable	Circulation or storage space.
B00D - R0026 - Staff Study - (10.57 SQM)	Office (2)	
B00D - R0031 - Movement - (7.35 SQM)	Not Applicable	Circulation or storage space.
B00D - R0033 - Entry - (17.91 SQM)	Not Applicable	Circulation or storage space.
B00D - R0034 - Practical Activities - M - 1hb - (34.2 SQM)	Student Space (15)	
B00D - R0036 - General Learning Space - (56.52 SQM) - Teaching Space: 1	Student Space (26)	
B00D - R0037 - Staff Study - (8.19 SQM)	Office (2)	
B00D - R0039 - Movement - (12.06 SQM)	Not Applicable	Circulation or storage space.
B00D - R0042 - Movement - (104.71 SQM)	Not Applicable	Circulation or storage space.
B00D - R0043 - Staff Study - (26.62 SQM)	Office (6)	
B00D - R0046 - Food Technology L.S. - (63.55 SQM) - Teaching Space: 1	Student Space (29)	
B00D - R0050 - General Learning Space - (37.47 SQM) - Teaching Space: 1	Student Space (17)	
B00D - R0051 - Kitchen - Type 1 - (83.17 SQM)	Student Space (38)	
B00D - R0052 - Food/Research Space - (18.96 SQM)	Not Applicable	Circulation or storage space.
B00D - R1004 - Materials Technology L.S. - (67.15 SQM) - Teaching Space: 1	Student Space (31)	

Entity Location	Audit Condition Classification (Capacity)	Comment
B00D - R1006 - General Learning Space - (67.14 SQM) - Teaching Space: 1	● Student Space (31)	
B00D - R1010 - General Learning Space - (46.16 SQM) - Teaching Space: 1	● Student Space (21)	
B00D - R1011 - Movement - (87.22 SQM)	Not Applicable	Circulation or storage space.
B00E - R0001 - Movement - (61.27 SQM)	Not Applicable	Circulation or storage space.
B00E - R0005 - Movement - (7.49 SQM)	Not Applicable	Circulation or storage space.
B00E - R0006 - General Learning Space - (52.3 SQM) - Teaching Space: 1	● Student Space (24)	
B00E - R0007 - General Learning Space - (52.17 SQM) - Teaching Space: 1	● Student Space (24)	
B00E - R0008 - General Learning Space - (52.97 SQM) - Teaching Space: 1	● Student Space (24)	
B00E - R0009 - Movement - (25.44 SQM)	Not Applicable	Circulation or storage space.
B00E - R0010 - Movement - (56.36 SQM)	Not Applicable	Circulation or storage space.
B00E - R0011 - General Learning Space - (51.58 SQM) - Teaching Space: 1	● Student Space (23)	
B00E - R0012 - General Learning Space - (51.65 SQM) - Teaching Space: 1	● Student Space (23)	
B00E - R0013 - Movement - (35.37 SQM)	Not Applicable	Circulation or storage space.
B00E - R0014 - Study Space - (23.5 SQM)	Not Applicable	Circulation or storage space.
B00E - R0015 - Staff Study - (51.69 SQM)	○ Office (12)	
B00E - R0017 - Movement - (43.94 SQM)	Not Applicable	Circulation or storage space.
B00E - R0018 - Movement - (49.61 SQM)	Not Applicable	Circulation or storage space.
B00E - R0019 - Movement - (5.63 SQM)	Not Applicable	Circulation or storage space.
B00E - R0021 - General Learning Space - (51.81 SQM) - Teaching Space: 1	● Student Space (24)	
B00E - R0022 - General Learning Space - (69.69 SQM) - Teaching Space: 1	● Student Space (32)	
B00F - R0001 - Gymnasium - (123.69 SQM)	● Student Space (57)	
B00F - R0003 - Movement - (18.94 SQM)	Not Applicable	Circulation or storage space.
B00F - R0005 - Staff Study - (53.52 SQM)	○ Office (13)	
B00F - R1001 - General Learning Space - (63.27 SQM) - Teaching Space: 1	● Student Space (29)	
B00F - R1002 - General Learning Space - (61.39 SQM) - Teaching Space: 1	● Student Space (28)	
B00F - R1003 - Movement - (72.54 SQM)	Not Applicable	Circulation or storage space.
B00F - R1004 - Movement - (8.94 SQM)	Not Applicable	Circulation or storage space.
B00F - R1005 - General Learning Space - (53.91 SQM) - Teaching Space: 1	● Student Space (25)	
B00G - R0003 - Darkroom Space - (15.49 SQM)	○ Office (3)	
B00G - R0006 - Workshop - (6.45 SQM)	● Student Space (2)	
B00G - R0007 - Art Learning Space - (66.38 SQM) - Teaching Space: 1	● Student Space (30)	
B00G - R0010 - Staff Study - (63.1 SQM)	○ Office (15)	
B00G - R0011 - Movement - (53.14 SQM)	Not Applicable	Circulation or storage space.
B00G - R1004 - Movement - (14.28 SQM)	Not Applicable	Circulation or storage space.
B00G - R1005 - Art Learning Space - (76.3 SQM) - Teaching Space: 1	● Student Space (35)	
B00G - R1006 - Workshop - (46.7 SQM)	● Student Space (21)	
B00G - R1008 - Art Learning Space - (75.83 SQM) - Teaching Space: 1	● Student Space (35)	
B00H - M0001 - Movement - (134.11 SQM)	Not Applicable	Circulation or storage space.
B00H - R0002 - Movement - (5.43 SQM)	Not Applicable	Circulation or storage space.
B00H - R0004 - Movement - (54.72 SQM)	Not Applicable	Circulation or storage space.
B00H - R0006 - Movement - (5.36 SQM)	Not Applicable	Circulation or storage space.
B00H - R0008 - Multi-Purpose Space - (393.35 SQM)	● Student Space (182)	
B00H - R0010 - Movement - (7.77 SQM)	Not Applicable	Circulation or storage space.
B00H - R0016 - Movement - (7.72 SQM)	Not Applicable	Circulation or storage space.
B00H - R0017 - Movement - (5.06 SQM)	Not Applicable	Circulation or storage space.
B00H - R0018 - Movement - (5.12 SQM)	Not Applicable	Circulation or storage space.
B00H - R0019 - Stage - (131.39 SQM)	Not Applicable	Circulation or storage space.
B00J - R0001 - Computer Learning Space - (92.08 SQM) - Teaching Space: 1	● Student Space (42)	
B00J - R0002 - Seminar - Type 2 - (19.1 SQM)	○ Office (4)	
B00K - R0005 - Movement - (22.72 SQM)	Not Applicable	Circulation or storage space.
B00L - M1002 - Workroom - (67.9 SQM)	○ Office (16)	

Entity Location	Audit Condition Classification (Capacity)	Comment
B00L - M1003 - Workroom - (38.02 SQM)	Office (9)	
B00L - R0001 - Laboratory L.S. - (91.49 SQM) - Teaching Space: 1	Student Space (42)	
B00L - R0004 - Laboratory L.S. - (91.21 SQM) - Teaching Space: 1	Student Space (42)	
B00L - R0005 - Preparation - (44.57 SQM)	Not Applicable	Circulation or storage space.
B00L - R0007 - Laboratory L.S. - (91.2 SQM) - Teaching Space: 1	Student Space (42)	
B00L - R0008 - Movement - (40.12 SQM)	Not Applicable	Circulation or storage space.
B00L - R0010 - Preparation - (44.58 SQM)	Not Applicable	Circulation or storage space.
B00L - R0012 - Laboratory L.S. - (91.22 SQM) - Teaching Space: 1	Student Space (42)	
B00L - R1001 - Seminar - (25.15 SQM)	Office (6)	
B00L - R1007 - Seminar - (25.13 SQM)	Office (6)	
B00L - R1008 - Main Area - (291.37 SQM)	Not Applicable	Circulation or storage space.
B00L - R1009 - Audio Visual Workroom - (28.36 SQM)	Student Space (13)	
B00L - R1011 - Staff Kitchen - (17.3 SQM)	Office (4)	
B00L - R1014 - Entry - (35.64 SQM)	Not Applicable	Circulation or storage space.
B00L - R1015 - Movement - (25.82 SQM)	Not Applicable	Circulation or storage space.
B00L - R1017 - Workroom - (70.95 SQM)	Office (17)	
B00N - R0002 - Movement - (17.79 SQM)	Not Applicable	Circulation or storage space.
B00N - R0003 - Staff Kitchen - (9.76 SQM)	Office (2)	
B00N - R0005 - Administration - Clerical - (10.05 SQM)	Office (2)	
B00N - R0006 - Administration - Clerical - (8.79 SQM)	Office (2)	
B00N - R0007 - Administration - Clerical - (7.28 SQM)	Office (1)	
B00N - R0008 - Administration - Clerical - (7.17 SQM)	Office (1)	
B00P - R0001 - Gymnasium - (195.08 SQM)	Student Space (90)	