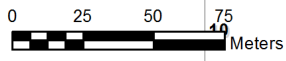
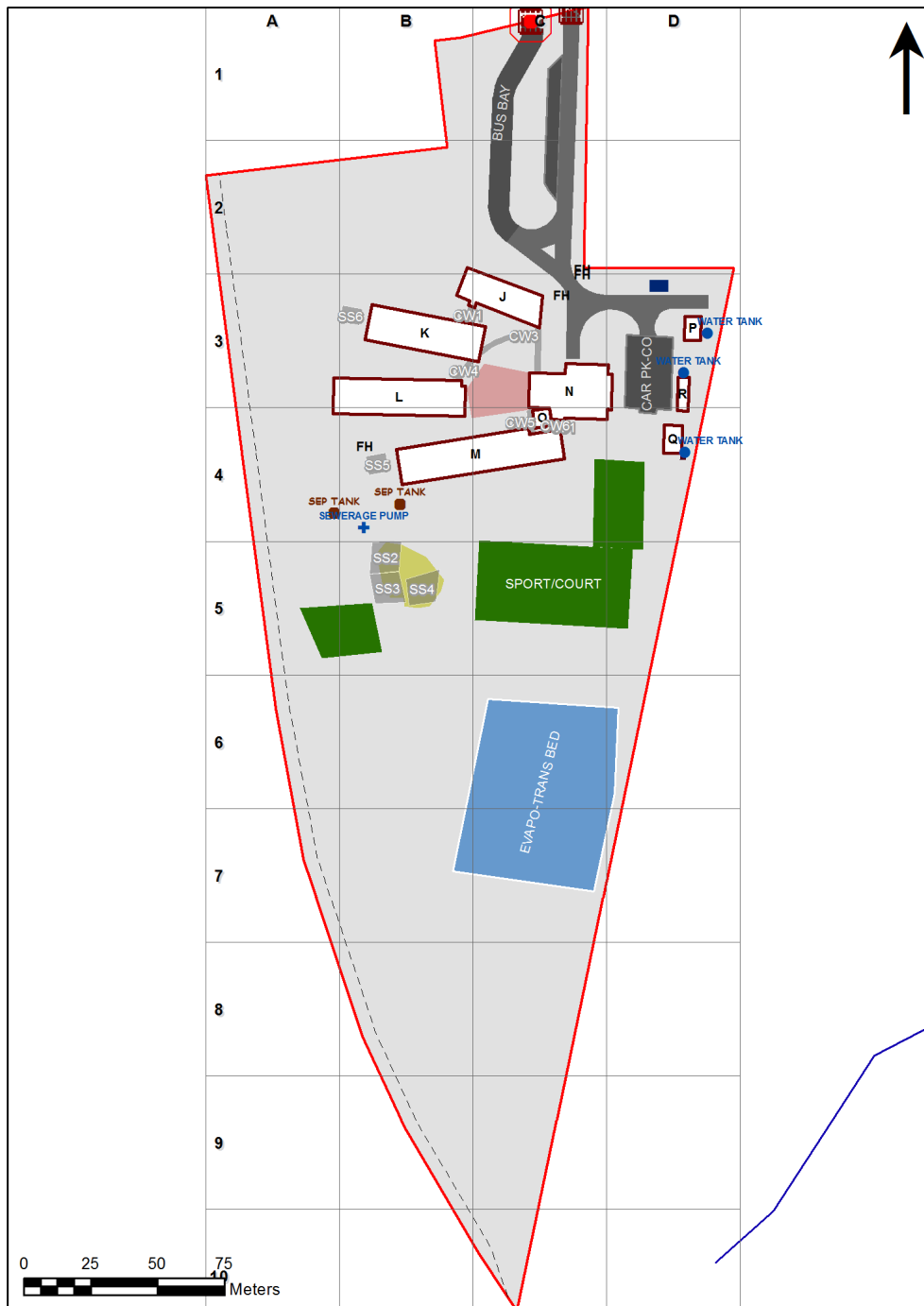


VENTILATION AUDIT REPORT

SCHOOL:	Bodalla Public School (1272)
AMU REGION:	Southern NSW
STATE ELECTORATE:	Bega
LOCAL GOVERNMENT AREA:	Eurobodalla

1272 - Bodalla Public School
Site Plan (03062)




1:1,773

Printed: 20-Mar-2020

Ventilation Audit Key

Category	Description
	Category A Operate this space in line with COVID safe school operations . It has the required level of natural ventilation. NB. Circulation and storage areas should not be used for groups or gatherings.
	Category B This space should be occupied at 1 person per 4m ² to comply with COVID safe school operations and the guided use of spaces . The report details the number of people who can be accommodated safely in each of the identified spaces.

Entity Location	Audit Condition Classification (Capacity)	Comment
B00J - R0001 - Entry Vestibule - (24.92 SQM)	Not Applicable	Circulation or storage space.
B00J - R0002 - Clerical Office - (17.56 SQM)	Office (4)	
B00J - R0003 - Sick Bay - (8.37 SQM)	Student Space (3)	
B00J - R0005 - Interview - (13.19 SQM)	Office (3)	
B00J - R0006 - Deputy Principal - (13.15 SQM)	Office (3)	
B00J - R0007 - Deputy Principal - (13.14 SQM)	Office (3)	
B00J - R0008 - Staff Room Annexe - (19.49 SQM)	Office (4)	
B00J - R0009 - Staff Room - (45.38 SQM)	Office (11)	
B00J - R0015 - Principal - (16.85 SQM)	Office (4)	
B00J - R0016 - Duplicating Workroom - (19.77 SQM)	Office (4)	
B00J - R0017 - Movement - (34.61 SQM)	Not Applicable	Circulation or storage space.
B00J - R0018 - Movement - (56.68 SQM)	Not Applicable	Circulation or storage space.
B00K - R0001 - Practical Activities - 1hb - (16.81 SQM)	Student Space (7)	
B00K - R0003 - Home Base - (58.45 SQM) - Teaching Space: 1	Student Space (27)	
B00K - R0005 - Withdrawal Space - 1hb - (11.65 SQM)	Student Space (5)	
B00K - R0006 - Home Base - (58.53 SQM) - Teaching Space: 1	Student Space (27)	
B00K - R0008 - Practical Activities - 1hb - (16.84 SQM)	Student Space (7)	
B00K - R0010 - Movement - (5.37 SQM)	Not Applicable	Circulation or storage space.
B00K - R0012 - Practical Activities - 1hb - (16.93 SQM)	Student Space (7)	
B00K - R0014 - Home Base - (58.38 SQM) - Teaching Space: 1	Student Space (27)	
B00K - R0016 - Withdrawal Space - 1hb - (11.65 SQM)	Student Space (5)	
B00K - R0017 - Home Base - (58.45 SQM) - Teaching Space: 1	Student Space (27)	
B00K - R0019 - Practical Activities - 1hb - (16.73 SQM)	Student Space (7)	
B00K - R0022 - Movement - (140.39 SQM)	Not Applicable	Circulation or storage space.
B00L - R0004 - Practical Activities - 1hb - (16.67 SQM)	Student Space (7)	
B00L - R0006 - Home Base - (58.53 SQM) - Teaching Space: 1	Student Space (27)	
B00L - R0008 - Withdrawal Space - 1hb - (11.7 SQM)	Student Space (5)	
B00L - R0009 - Home Base - (58.52 SQM) - Teaching Space: 1	Student Space (27)	
B00L - R0011 - Practical Activities - 1hb - (16.9 SQM)	Student Space (7)	
B00L - R0013 - Movement - (5.42 SQM)	Not Applicable	Circulation or storage space.
B00L - R0015 - Practical Activities - 1hb - (16.85 SQM)	Student Space (7)	
B00L - R0017 - Home Base - (58.45 SQM) - Teaching Space: 1	Student Space (27)	
B00L - R0019 - Withdrawal Space - 1hb - (11.65 SQM)	Student Space (5)	
B00L - R0020 - Home Base - (58.38 SQM) - Teaching Space: 1	Student Space (27)	
B00L - R0022 - Practical Activities - 1hb - (16.76 SQM)	Student Space (7)	
B00L - R0025 - Movement - (187.36 SQM)	Not Applicable	Circulation or storage space.
B00M - R0006 - Withdrawal Space - 1hb - (33.53 SQM)	Student Space (15)	
B00M - R0007 - Reading Area - (160.36 SQM)	Student Space (74)	
B00M - R0010 - Practical Activities - 1hb - (16.82 SQM)	Student Space (7)	
B00M - R0012 - Home Base - (58.68 SQM) - Teaching Space: 1	Student Space (27)	
B00M - R0014 - Withdrawal Space - 1hb - (11.69 SQM)	Student Space (5)	
B00M - R0015 - Home Base - (58.68 SQM) - Teaching Space: 1	Student Space (27)	
B00M - R0017 - Practical Activities - 1hb - (16.85 SQM)	Student Space (7)	
B00M - R0021 - Movement - (249.91 SQM)	Not Applicable	Circulation or storage space.
B00N - R0002 - Movement - (9.13 SQM)	Not Applicable	Circulation or storage space.
B00N - R0004 - Raised Platform - (44.76 SQM)	Not Applicable	Circulation or storage space.
B00N - R0005 - Movement - (9.22 SQM)	Not Applicable	Circulation or storage space.
B00N - R0010 - Communal Space - (139.16 SQM)	Student Space (64)	

Entity Location	Audit Condition Classification (Capacity)	Comment
B00N - R0022 - Outdoor Learning Area - (194.78 SQM)	Not Applicable	Circulation or storage space.
B00O - R0001 - Canteen - (24.86 SQM)	Not Applicable	Circulation or storage space.
B00Q - R0001 - Special Programs Room - (70.12 SQM)	 Student Space (32)	