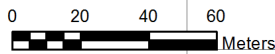
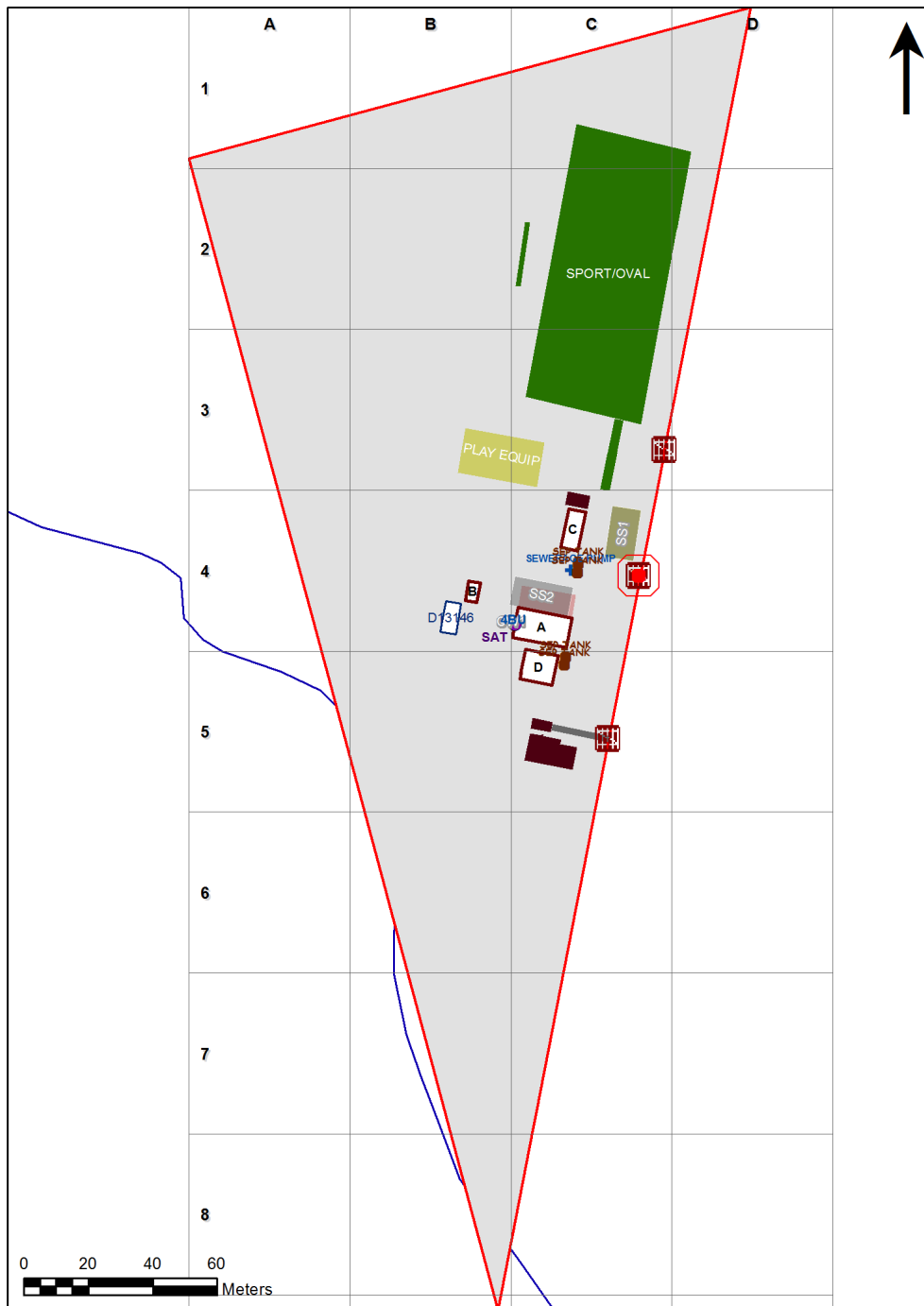


VENTILATION AUDIT REPORT

SCHOOL:	Blackville Public School (1252)
AMU REGION:	North Western NSW
STATE ELECTORATE:	Upper Hunter
LOCAL GOVERNMENT AREA:	Liverpool Plains

1252 - Blackville Public School
Site Plan (13117)









1:1,472

Printed: 20-Mar-2020

Ventilation Audit Key

Category	Description
	Category A Operate this space in line with COVID safe school operations . It has the required level of natural ventilation. NB. Circulation and storage areas should not be used for groups or gatherings.
	Category B This space should be occupied at 1 person per 4m ² to comply with COVID safe school operations and the guided use of spaces . The report details the number of people who can be accommodated safely in each of the identified spaces.

Entity Location	Audit Condition Classification (Capacity)	Comment
B00A - R0004 - Clerical Office/Workroom - (14.17 SQM)	 Office (3)	
B00A - R0006 - Sick Bay - (6.73 SQM)	 Student Space (3)	
B00A - R0007 - Home Base - (54.87 SQM) - Teaching Space: 1	 Student Space (25)	
B00A - R0008 - Reading Area - (6.81 SQM)	 Student Space (3)	
B00A - R0009 - Practical Activities - 1hb - (10.2 SQM)	 Student Space (4)	
B00A - R0011 - Movement - (25.15 SQM)	Not Applicable	Circulation or storage space.
B00B - R0001 - Movement - (10.12 SQM)	Not Applicable	Circulation or storage space.
B00D - R0001 - Reading Area - (59.86 SQM)	 Student Space (27)	
NS 020 13146 - NS 020 13146 - Staff Study/Store - (38 SQM)	Not Applicable	Circulation or storage space.