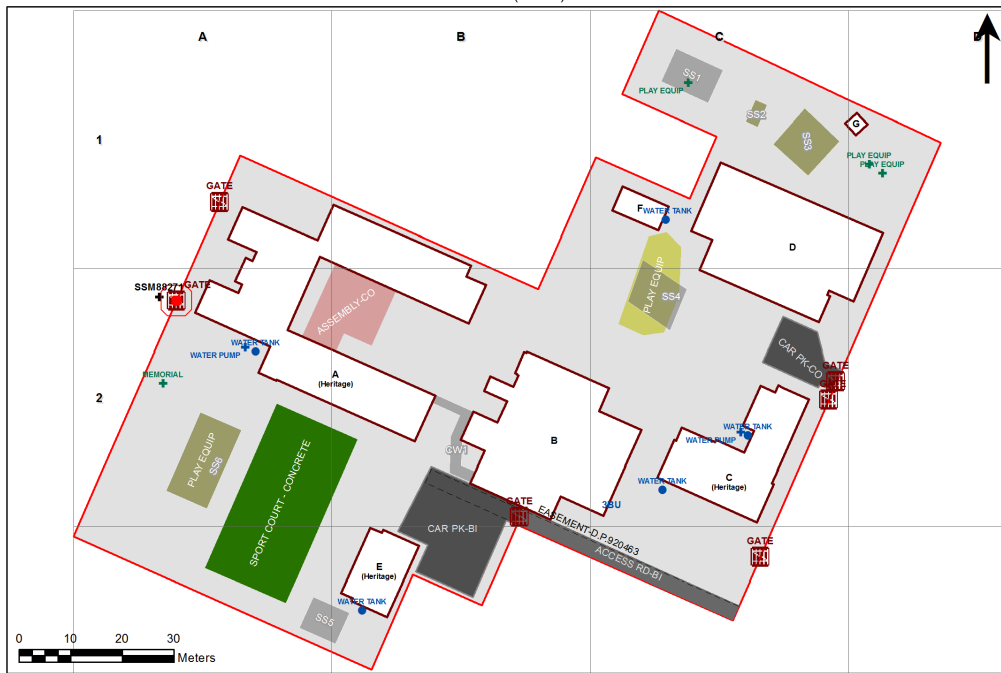


VENTILATION AUDIT REPORT

SCHOOL:	Annandale Public School (1041)
AMU REGION:	Sydney
STATE ELECTORATE:	Balmain
LOCAL GOVERNMENT AREA:	Inner West

1041 - Annandale Public School
Site Plan (12098)



1:687

Printed: 20-Mar-2020

Ventilation Audit Key

Category	Description
	Category A Operate this space in line with COVID safe school operations . It has the required level of natural ventilation. NB. Circulation and storage areas should not be used for groups or gatherings.
	Category B This space should be occupied at 1 person per 4m ² to comply with COVID safe school operations and the guided use of spaces . The report details the number of people who can be accommodated safely in each of the identified spaces.

Entity Location	Audit Condition Classification (Capacity)	Comment
B00A - R0001 - Movement - (58.08 SQM)	Not Applicable	Circulation or storage space.
B00A - R0002 - Home Base - (52.92 SQM) - Teaching Space: 1	● Student Space (24)	
B00A - R0003 - Practical Activities - 1hb - (17.48 SQM)	● Student Space (8)	
B00A - R0005 - Practical Activities - 1hb - (15.62 SQM)	● Student Space (7)	
B00A - R0006 - Home Base - (47.27 SQM) - Teaching Space: 1	● Student Space (21)	
B00A - R0007 - Home Base - (53.77 SQM) - Teaching Space: 1	● Student Space (24)	
B00A - R0008 - Practical Activities - 1hb - (15.83 SQM)	● Student Space (7)	
B00A - R0010 - Movement - (15.35 SQM)	Not Applicable	Circulation or storage space.
B00A - R0016 - Movement - (19.3 SQM)	Not Applicable	Circulation or storage space.
B00A - R0017 - Movement - (46.91 SQM)	Not Applicable	Circulation or storage space.
B00A - R0018 - Home Base - (54.3 SQM) - Teaching Space: 1	● Student Space (25)	
B00A - R0019 - Practical Activities - 1hb - (16.14 SQM)	● Student Space (7)	
B00A - R0020 - Practical Activities - 1hb - (15.59 SQM)	● Student Space (7)	
B00A - R0021 - Home Base - (52.92 SQM) - Teaching Space: 1	● Student Space (24)	
B00A - R0023 - Home Base - (46.7 SQM) - Teaching Space: 1	● Student Space (21)	
B00A - R0024 - Practical Activities - 1hb - (15.89 SQM)	● Student Space (7)	
B00A - R0026 - Movement - (18.94 SQM)	Not Applicable	Circulation or storage space.
B00A - R0028 - Duplicating Workroom - (25.32 SQM)	● Office (6)	
B00A - R0031 - Staff Room - (57.36 SQM)	● Office (14)	
B00A - R0032 - Movement - (19.26 SQM)	Not Applicable	Circulation or storage space.
B00A - R0033 - Movement - (5.74 SQM)	Not Applicable	Circulation or storage space.
B00A - R0034 - Movement - (12.96 SQM)	Not Applicable	Circulation or storage space.
B00A - R0035 - Principal - (19.09 SQM)	● Office (4)	
B00A - R0036 - Clerical Office - (15.61 SQM)	● Office (3)	
B00A - R0037 - Movement - (5.74 SQM)	Not Applicable	Circulation or storage space.
B00A - R0038 - Interview - (19.52 SQM)	● Office (4)	
B00A - R0039 - Deputy Principal - (15.93 SQM)	● Office (3)	
B00A - R0040 - Interview - (19.12 SQM)	● Office (4)	
B00A - R0041 - Clerical Office/Workroom - (18.32 SQM)	● Office (4)	
B00A - R0042 - Entry Vestibule - (29.6 SQM)	Not Applicable	Circulation or storage space.
B00B - R0001 - Movement - (16.12 SQM)	Not Applicable	Circulation or storage space.
B00B - R0002 - Home Base - (69.57 SQM) - Teaching Space: 1	● Student Space (32)	
B00B - R0003 - Practical Activities - 1hb - (21.38 SQM)	● Student Space (9)	
B00B - R0004 - Movement - (14.82 SQM)	Not Applicable	Circulation or storage space.
B00B - R0006 - Movement - (5.68 SQM)	Not Applicable	Circulation or storage space.
B00B - R0009 - Movement - (14.82 SQM)	Not Applicable	Circulation or storage space.
B00B - R0010 - Home Base - (68.27 SQM) - Teaching Space: 1	● Student Space (31)	
B00B - R0011 - Practical Activities - 1hb - (21.28 SQM)	● Student Space (9)	
B00B - R0012 - Movement - (13.81 SQM)	Not Applicable	Circulation or storage space.
B00B - R1001 - Communal Space - (164.79 SQM)	● Student Space (76)	
B00B - R1003 - Home Base - (70.57 SQM) - Teaching Space: 1	● Student Space (32)	
B00B - R1004 - Movement - (32.24 SQM)	Not Applicable	Circulation or storage space.
B00B - R1005 - Communal Space - (92.67 SQM)	● Student Space (42)	
B00B - R1006 - Canteen - (26.68 SQM)	Not Applicable	Circulation or storage space.
B00B - R1020 - Movement - (59.81 SQM)	Not Applicable	Circulation or storage space.
B00B - R2001 - Reading Area - (172.8 SQM)	● Student Space (80)	
B00B - R2009 - Home Base - (73.12 SQM) - Teaching Space: 1	● Student Space (33)	
B00B - R2010 - Staff Room Annexe - (65.56 SQM)	● Office (16)	
B00B - R2012 - Movement - (24.11 SQM)	Not Applicable	Circulation or storage space.

Entity Location	Audit Condition Classification (Capacity)	Comment
B00B - R2017 - Movement - (5.72 SQM)	Not Applicable	Circulation or storage space.
B00C - M0001 - Movement - (39.71 SQM)	Not Applicable	Circulation or storage space.
B00C - M0004 - Staff Room - (20.53 SQM)	Office (5)	
B00C - M0006 - Movement - (9.65 SQM)	Not Applicable	Circulation or storage space.
B00C - R0001 - Movement - (18.05 SQM)	Not Applicable	Circulation or storage space.
B00C - R0004 - Movement - (16.4 SQM)	Not Applicable	Circulation or storage space.
B00C - R0005 - Duplicating Workroom - (13.72 SQM)	Office (3)	
B00C - R0008 - Staff Room Annexe - (11.98 SQM)	Office (2)	
B00C - R0010 - Movement - (48.43 SQM)	Not Applicable	Circulation or storage space.
B00C - R0011 - Withdrawal Space - 1hb - (9.79 SQM)	Student Space (4)	
B00C - R0012 - Practical Activities - 1hb - (19.78 SQM)	Student Space (9)	
B00C - R0013 - Home Base - (55.49 SQM) - Teaching Space: 1	Student Space (25)	
B00C - R0015 - Home Base - (49.56 SQM) - Teaching Space: 1	Student Space (22)	
B00C - R0016 - Practical Activities - 1hb - (19.7 SQM)	Student Space (9)	
B00C - R1004 - Movement - (25.64 SQM)	Not Applicable	Circulation or storage space.
B00C - R1005 - Withdrawal Space - 1hb - (12.9 SQM)	Student Space (5)	
B00C - R1006 - Practical Activities - 1hb - (21.62 SQM)	Student Space (10)	
B00C - R1007 - Home Base - (53.38 SQM) - Teaching Space: 1	Student Space (24)	
B00C - R1008 - Home Base - (49.25 SQM) - Teaching Space: 1	Student Space (22)	
B00C - R1009 - Practical Activities - 1hb - (18.99 SQM)	Student Space (8)	
B00C - R1010 - Withdrawal Space - 1hb - (8.01 SQM)	Student Space (3)	
B00C - R1014 - Home Base - (68.16 SQM) - Teaching Space: 1	Student Space (31)	
B00C - R1015 - Practical Activities - 1hb - (19.33 SQM)	Student Space (8)	
B00D - R0001 - Movement - (88.25 SQM)	Not Applicable	Circulation or storage space.
B00D - R0007 - Staff Room - (16.48 SQM)	Office (4)	
B00D - R0010 - Staff Kitchen - (22.76 SQM)	Office (5)	
B00D - R0011 - Movement - (6.2 SQM)	Not Applicable	Circulation or storage space.
B00D - R0012 - Staff Room Annexe - (14.27 SQM)	Office (3)	
B00D - R0013 - Staff Room Annexe - (16.93 SQM)	Office (4)	
B00D - R0014 - Staff Room - (18.12 SQM)	Office (4)	
B00D - R0016 - Home Base - Pre - (87.65 SQM) - Teaching Space: 1	Student Space (40)	
B00D - R0026 - Home Base - Pre - (86.04 SQM) - Teaching Space: 1	Student Space (39)	
B00D - R0027 - Movement - (37.38 SQM)	Not Applicable	Circulation or storage space.
B00D - R0028 - Withdrawal Space - 1hb - (9.06 SQM)	Student Space (4)	
B00D - R0029 - Withdrawal Space - 1hb - (7.3 SQM)	Student Space (3)	
B00D - R0034 - Home Base - Pre - (95.79 SQM) - Teaching Space: 1	Student Space (44)	
B00E - R0001 - Home Base - (53.83 SQM) - Teaching Space: 1	Student Space (24)	
B00E - R0002 - Home Base - (53.82 SQM) - Teaching Space: 1	Student Space (24)	
B00E - R0003 - Movement - (25.94 SQM)	Not Applicable	Circulation or storage space.
B00F - R0001 - Special Programs Room - (31.65 SQM)	Student Space (14)	