

Project overview

The NSW Government is investing \$8.6 billion in school infrastructure over the next four years, continuing its program to deliver 160 new and upgraded schools to support communities across NSW. This includes an upgrade of Yanco Agricultural High School

The upgrade will support high quality educational outcomes to meet the needs of students within the local community and deliver:

 New fit for purpose permanent female boarding facilities

 Minor refurbishments and improvements to existing boarding facilities

 Removal of temporary female dormitories

 Increased equity of access for quality of education for rural and regional students

Subject to change



Artist impression of the new female accommodation facility

Yanco Agricultural High School upgrade

For more information phone: 1300 482 651
Email: schoolinfrastructure@det.nsw.edu.au

The new and upgraded accommodation facilities

The new permanent accommodation facilities will replace female boarding accommodation in temporary buildings at Yanco Agricultural High School.

The new female boarding facilities include:

- 2-storey building with 86 beds
- single bed and 5 bed dormitories
- equitable living
- private courtyard
- 2 key staff residences
- 2 spacious common rooms on each floor
- amenities and laundry spaces
- storage.

The partial refurbishment of existing permanent boarding accommodation facilities to make them fit for purpose and efficient. These will include:

- enlarged Level 1 common room at Mutch Building for greater natural light
- conversion of dorm to 7 bed dorms in both Gardner and Breakwell Buildings
- improved ground access to Hindmarsh building and Level 1 and Level 2 building improvements
- minor building improvements of the Mason building.



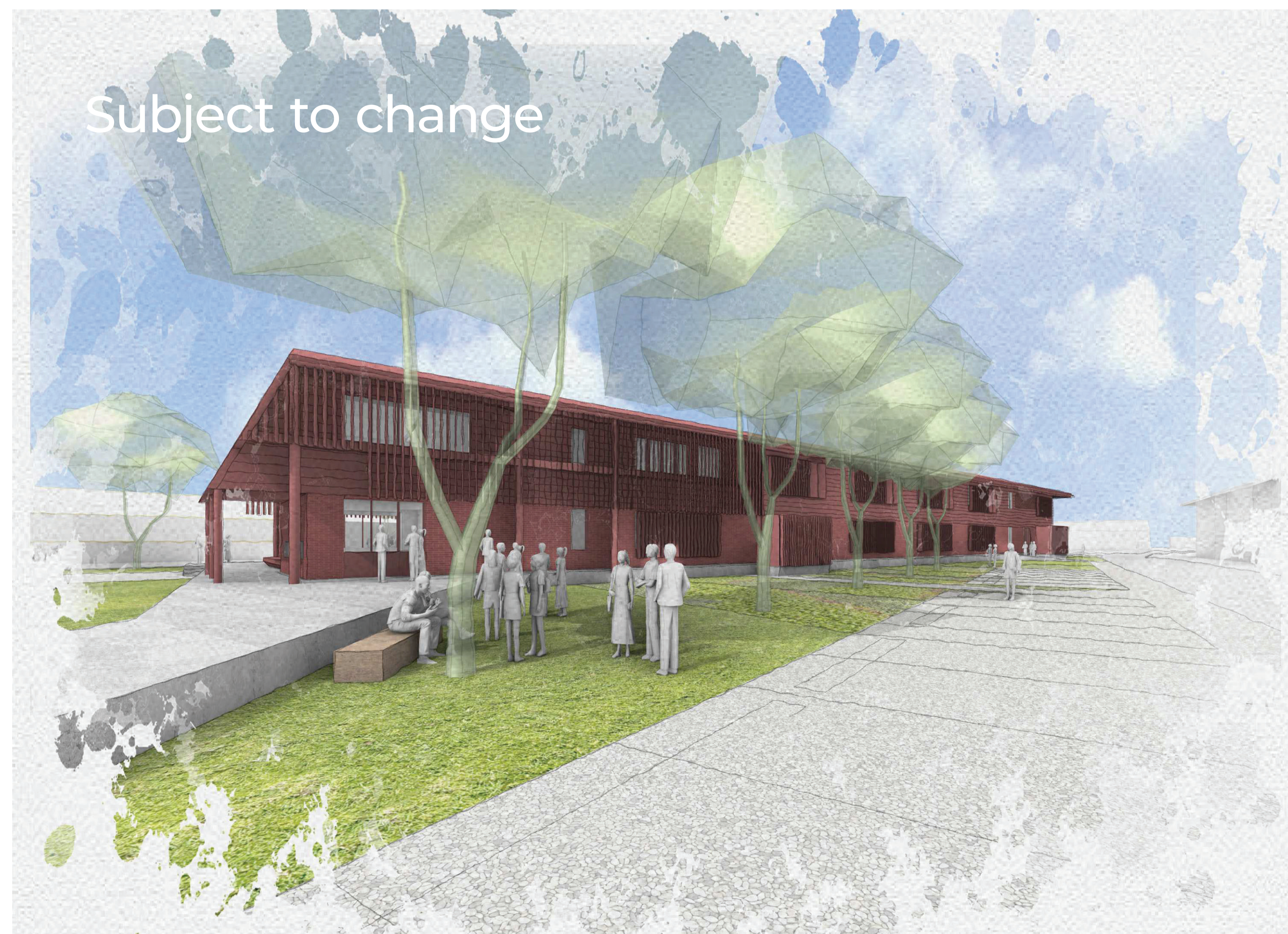
Artist impression of the new female accommodation facility

Yanco Agricultural High School upgrade

For more information phone: 1300 482 651
Email: schoolinfrastructure@det.nsw.edu.au

Artist impressions

The artist impressions of the boarding facilities are in schematic design phase, the third of 4 design phases and are subject to change. The project scope and design will continue to evolve during future design phases as feedback from government agencies, stakeholders and the community is considered.



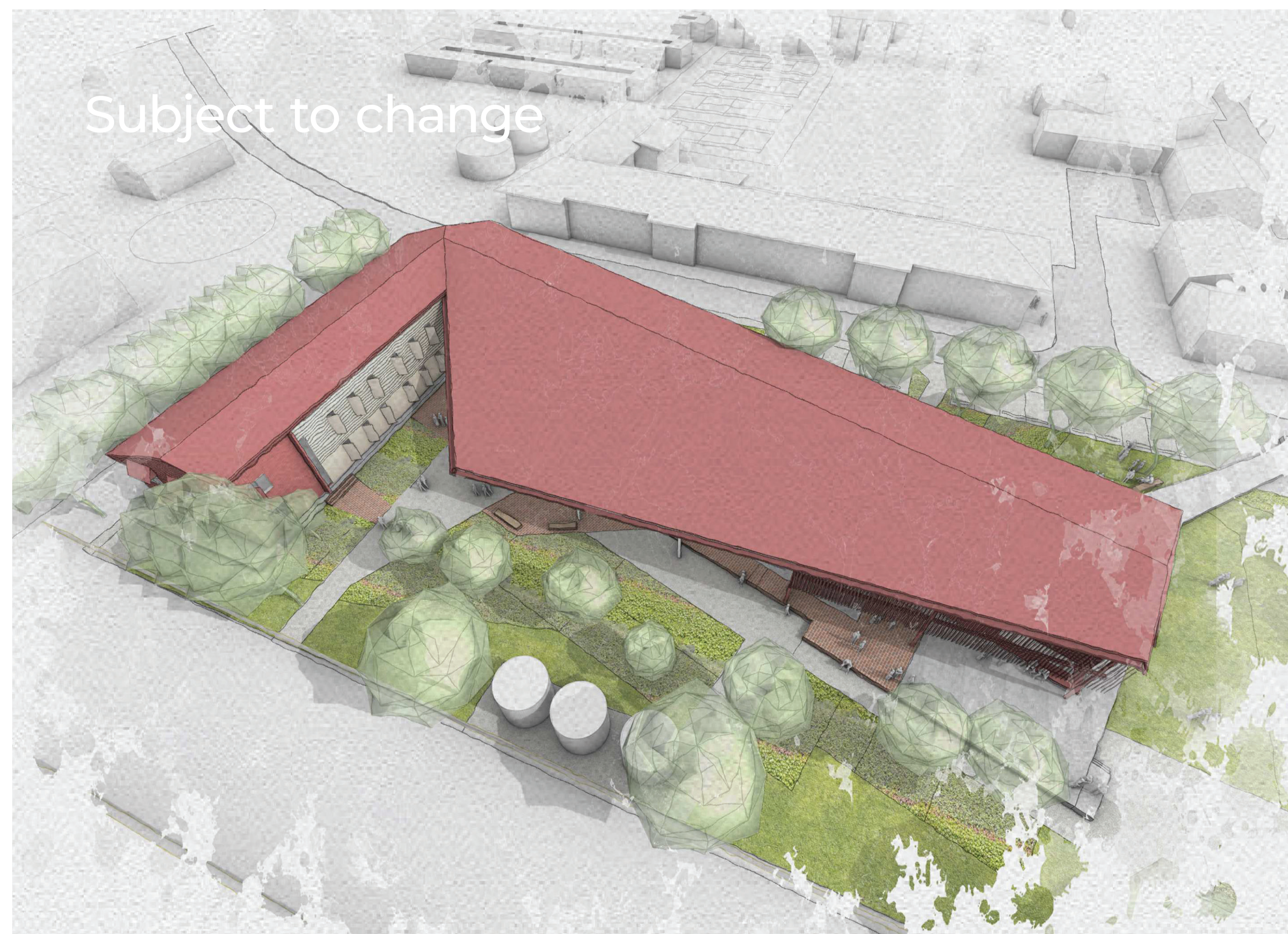
Artist impressions of the new female accommodation facilities at Yanco Agricultural High School.

Yanco Agricultural High School upgrade

For more information phone: 1300 482 651
Email: schoolinfrastructure@det.nsw.edu.au

Artist impressions

The artist impressions are at a schematic design stage and are subject to change.



Artist impressions of the new female accommodation facilities at Yanco Agricultural High School

Yanco Agricultural High School upgrade

For more information phone: 1300 482 651
Email: schoolinfrastructure@det.nsw.edu.au

Project timeline



What's next?

The Development Application (DA) for the Yanco Agricultural High School upgrade has been lodged with Leeton Shire Council and will soon be available to view on the Council website via development online services.

Demountable removal will start soon after DA approval which will involve:

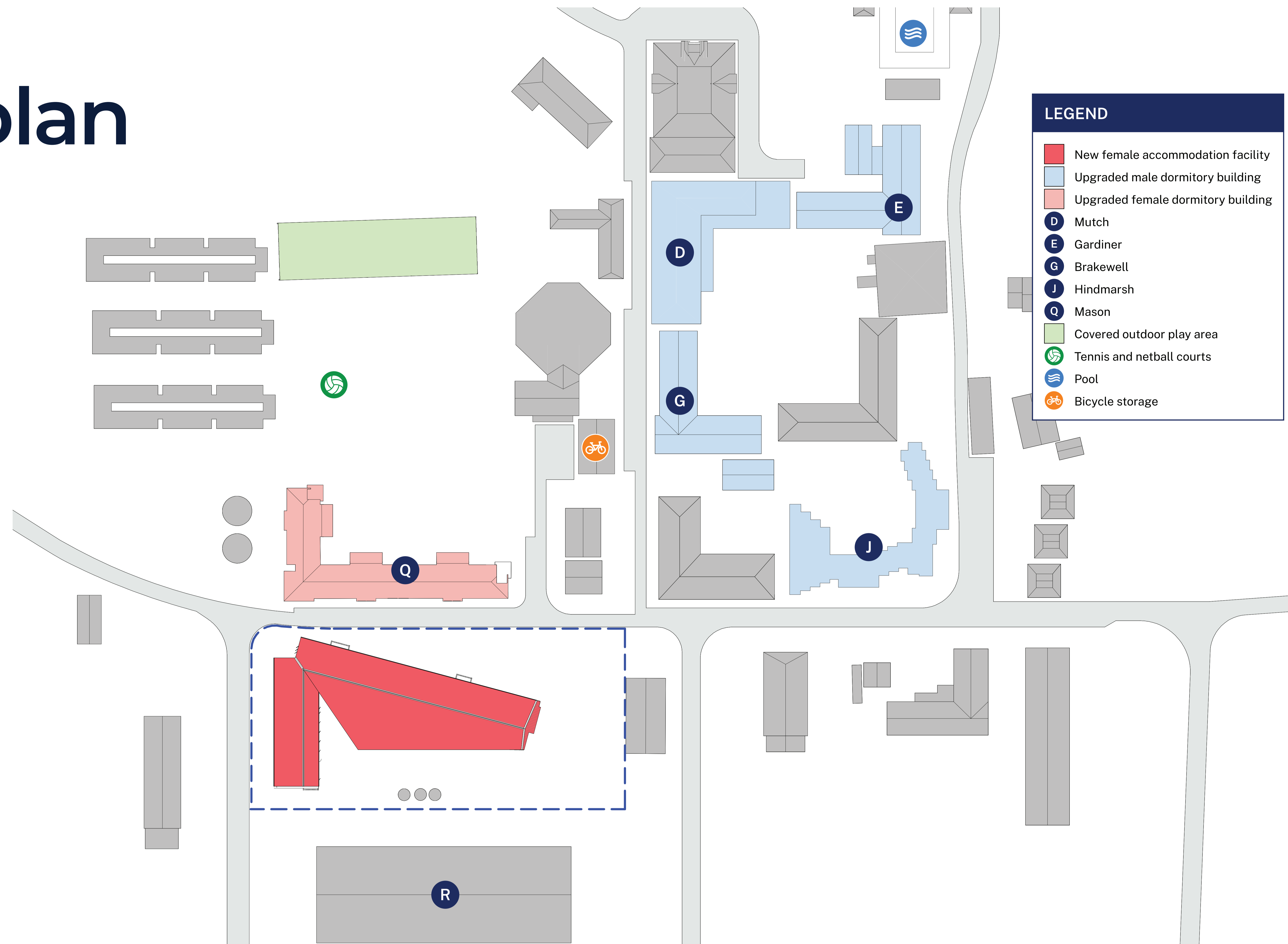
- removal of Edis, Gosper, Hilton, Hyatt female temporary boarding facilities
- removal of Villages 1, 2 and 3 demountables, a house and carport demountables

We look forward to sharing more information with you as the project progresses. In the meantime you can stay informed by regularly visiting the project web page and you can contact us via email or phone if you have any questions or feedback about the new high school.

Yanco Agricultural High School upgrade

For more information phone: 1300 482 651
Email: schoolinfrastructure@det.nsw.edu.au

Site plan



Yanco Agricultural High School upgrade

For more information phone: 1300 482 651
Email: schoolinfrastructure@det.nsw.edu.au