



Artist impression of the new boarding facilities. Indicative only and subject to change.

# Yanco Agricultural School

## Project update

March 2022

### Investing in our schools

The NSW Government is investing \$7.9 billion over the next four years, continuing its program to deliver 215 new and upgraded schools to support communities across NSW. This is the largest investment in public education infrastructure in the history of NSW.

The NSW Department of Education is committed to delivering new and upgraded schools for communities across NSW. The delivery of these important projects is essential to the future learning needs of our students and supports growth in the local economy.

### Project overview

We are undertaking planning for an upgrade of the boarding accommodation at Yanco Agricultural High School. The proposed upgrade involves the construction of new accommodation facilities and improvements to existing buildings.

The project aims to deliver enhanced learning outcomes for students through improved accommodation with:

- the removal of the temporary female dormitories
- the construction of a new permanent female boarding facility, and
- the partial refurbishment of existing permanent boarding facilities to ensure they are fit for purpose and efficient.

### Progress summary

The master planning and concept design phases are now complete and we have commenced work on progressing the schematic design. Throughout the early design phases, feedback has been sought from project stakeholders and representatives from Yanco Agricultural High School and incorporated, where appropriate, into the design.

We are pleased to share the latest artist renders and concept design development with the Yanco Agricultural High School during its centenary month. These will be displayed at the school and can be viewed on the project webpage by searching "[Yanco Agricultural High School upgrade](#)" on [schoolinfrastructure.nsw.gov.au](http://schoolinfrastructure.nsw.gov.au).

### For more information contact:

School Infrastructure NSW  
Email: [schoolinfrastructure@det.nsw.edu.au](mailto:schoolinfrastructure@det.nsw.edu.au)  
Phone: 1300 482 651  
[www.schoolinfrastructure.nsw.gov.au](http://www.schoolinfrastructure.nsw.gov.au)



## Community survey

Thank you to all who participated in the Yanco Agricultural High School community survey. The purpose of the survey was to gather feedback on the perceptions on the current boarding facilities and what would be of value in the upgraded boarding facilities to be considered during the design phase.

The survey was open from 2 December 2021 to 19 December 2021, in total 139 responses were received. The majority of responses were from current students (47%) followed by parents or guardians (28%), staff (17%) and interested community members (8%).

Please see below for a summary of what you told us.

## Next steps

We will continue to progress the schematic and detailed design of Yanco Agricultural High School and consult with key stakeholders including student representatives and community members to deliver an upgraded residential area at Yanco Agricultural High School for the community.

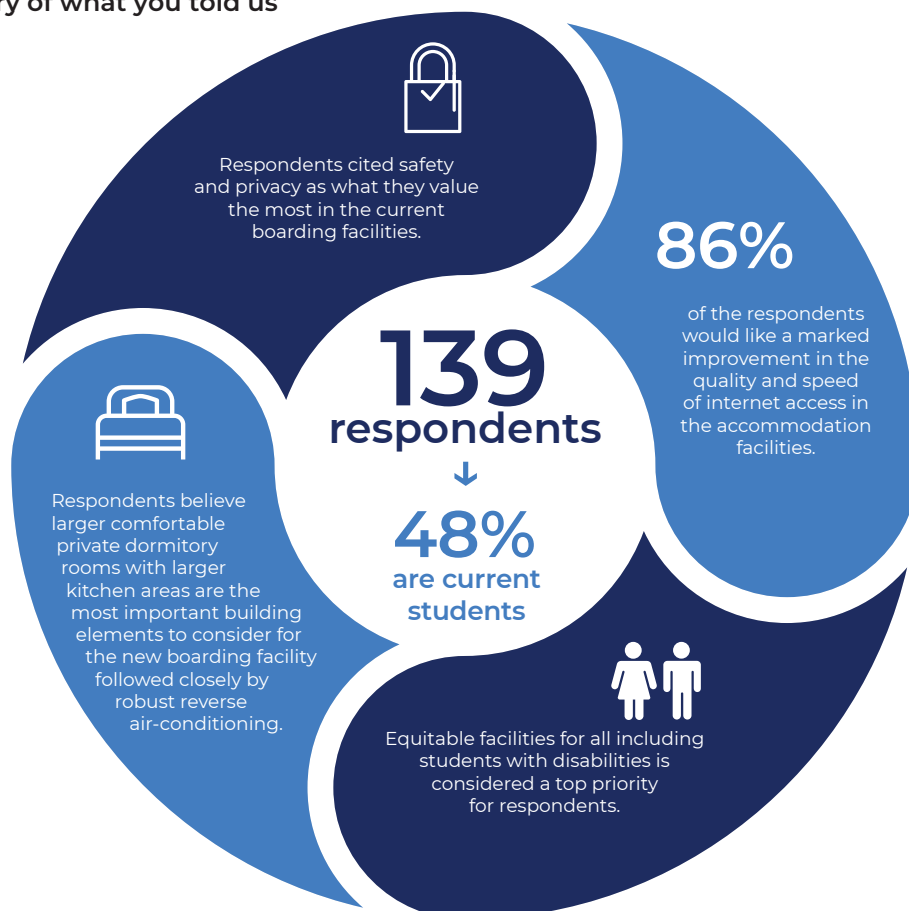
The next phase of the project will also include the lodgement of the Development Application (DA) and the commencement of market engagement for the Head Contractor.

## How can I get involved?

We are committed to working together with our school communities and other stakeholders to deliver the best possible learning facilities for students. Your feedback on this project is important to us. We will notify the community ahead of information sessions and you contact us on the details below.

We will provide regular progress updates to the community and will publish these on the [project webpage](#).

## Here's a summary of what you told us



## For more information contact:

School Infrastructure NSW  
Email: [schoolinfrastructure@det.nsw.edu.au](mailto:schoolinfrastructure@det.nsw.edu.au)  
Phone: 1300 482 651  
[www.schoolinfrastructure.nsw.gov.au](http://www.schoolinfrastructure.nsw.gov.au)