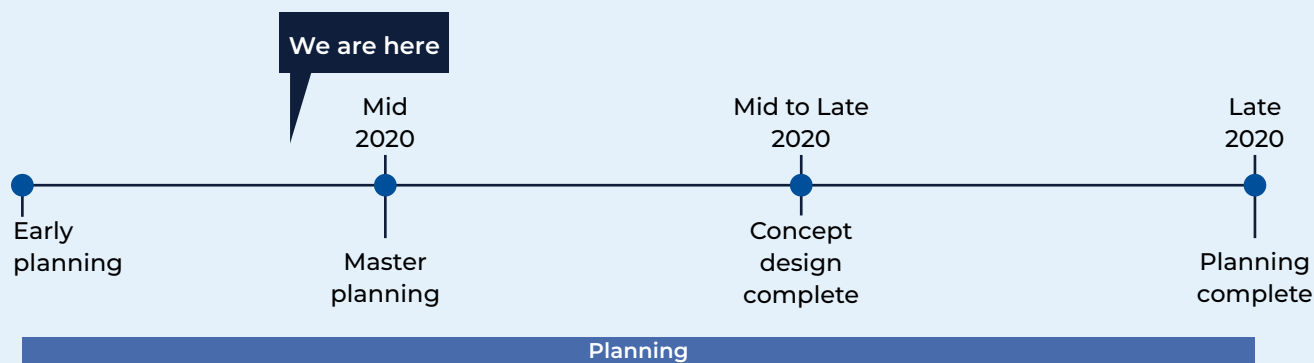


Yanco Agricultural High School boarding upgrade

Planning update

August 2020

Process timeline



Planning for Yanco Agricultural High School boarding upgrade

We are currently undertaking planning for female boarding upgrades at Yanco Agricultural High School. This includes investigating the feasibility, costs and benefits, spatial requirements of upgrades, and how they might fit within the wider Yanco Agricultural High School.

Once the planning process has been completed, a Business Case will be submitted for approval to the NSW Treasury.

Progress summary

We are in the planning phase and are currently assessing the requirements for the school.

Next steps will include consideration of operational, educational and service delivery factors and the development of initial master plan options.

How can I get involved?

We are committed to working together with our school communities and other stakeholders to deliver the best possible facilities for students.

Your feedback on this project is important to us. For more information, questions or to make a comment please email us at schoolinfrastructure@det.nsw.edu.au.

Changing the way we communicate

The health and safety of our students, staff and community is our priority.

We are temporarily changing some of the ways we keep you informed about our project in your community to account for social distancing measures.

How we will keep you informed

Until further notice we will share information with our communities online instead of in person. Our information hotline and email address will continue to operate as normal.

Keep in touch

The SINSW website will continue to have up-to-date information about the project in your area. You can also continue to contact us via our community information line and email on the details below.

For more information contact:

School Infrastructure NSW
Email: schoolinfrastructure@det.nsw.edu.au
Phone: 1300 482 651
www.schoolinfrastructure.nsw.gov.au

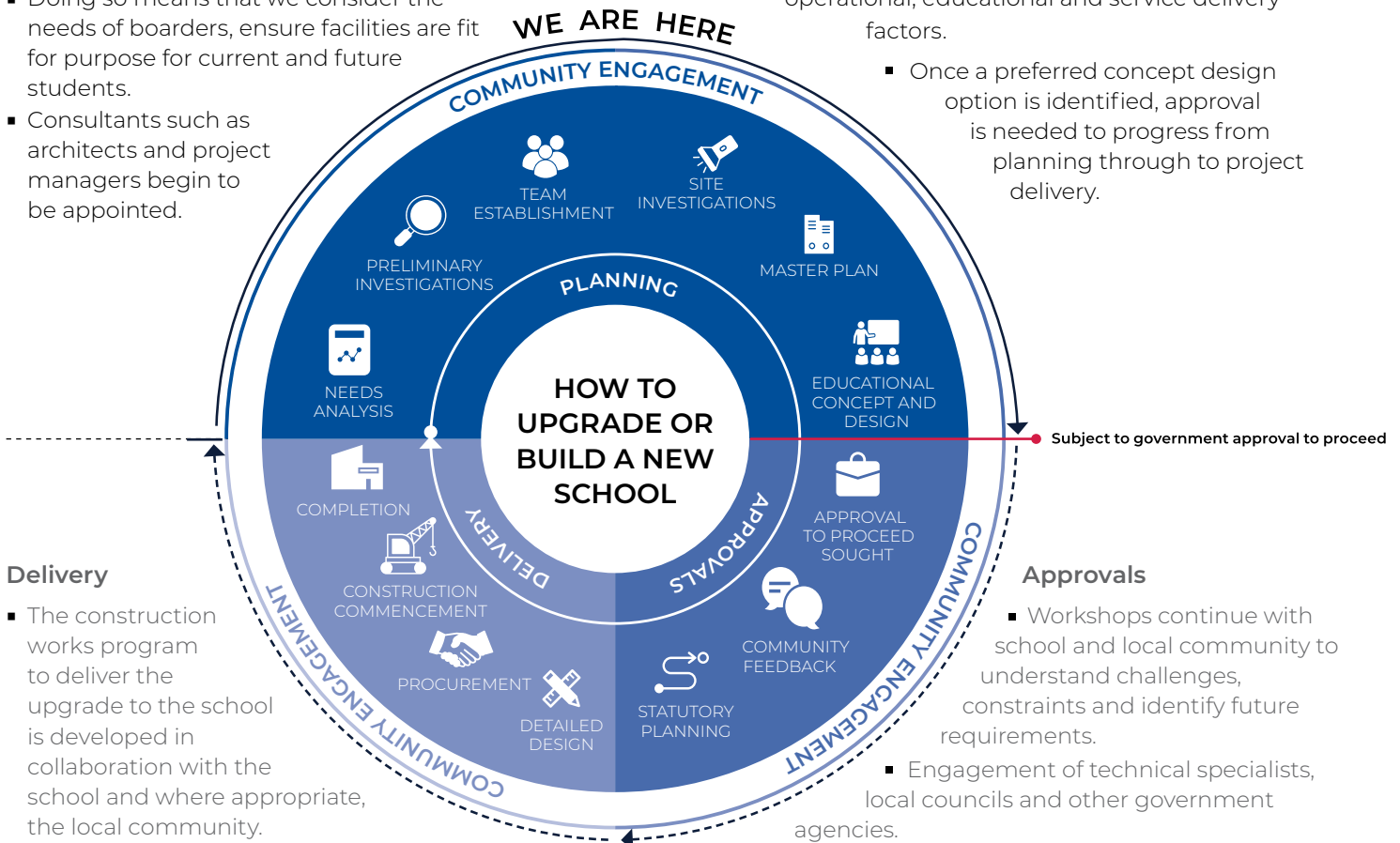
Yanco Agricultural High School boarding upgrade

Planning funding has been allocated to allow for planning of upgrades to the female boarding facilities of Yanco Agricultural High School. The information below takes you through the journey of upgrading a school.

How to upgrade or build a new school

Planning

- Consideration, studies and due diligence assessments of school requirements, the condition of the existing buildings, heritage requirements and statutory planning requirements.
- Doing so means that we consider the needs of boarders, ensure facilities are fit for purpose for current and future students.
- Consultants such as architects and project managers begin to be appointed.
- The site is investigated and reviewed for the development of master plan options, considering general size, shape and form of buildings.
- A Project Reference Group (PRG) is established to consider operational, educational and service delivery factors.
- Once a preferred concept design option is identified, approval is needed to progress from planning through to project delivery.



Delivery

- The construction works program to deliver the upgrade to the school is developed in collaboration with the school and where appropriate, the local community.
- Ongoing consultation with Principal, staff and other school users.
- Throughout, detailed updates are provided to the local community.

Approvals

- Workshops continue with school and local community to understand challenges, constraints and identify future requirements.
- Engagement of technical specialists, local councils and other government agencies.
- Statutory planning approval process.
- Opportunity for local community to view and provide feedback upon submission of the Development Application.
- Scope of work and concept design is further defined.