

Wilkins Public School – new preschool

Project update | November 2021



New preschool building on the grounds at Wilkins Public School



New purpose built preschool
for **50** students



New multipurpose courts

Investing in our schools

The NSW Government is investing \$7.9 billion over the next four years, continuing its program to deliver 215 new and upgraded schools to support communities across NSW. This is the largest investment in public education infrastructure in the history of NSW.

The NSW Department of Education is committed to delivering new and upgraded schools for communities across NSW. The delivery of these important projects is essential to the future learning needs of our students and supports growth in the local economy.

Progress summary

Inner West Council recently signed a licence agreement to operate the new preschool facilities until December 2026, with the opportunity for an extension until 2031. The new preschool building has now been handed over to the council to fit out before occupation.

In addition, Wilkins Public School's new multipurpose courts have been handed over to the school and are ready for use.

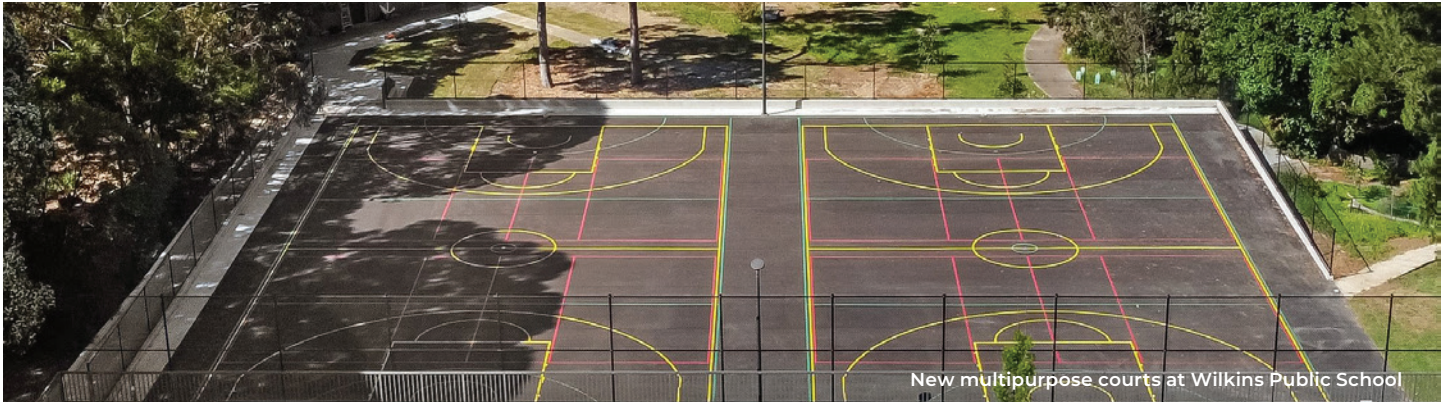
Next steps

Once the new preschool is occupied, School Infrastructure NSW will refurbish the current preschool rooms into learning spaces for Wilkins Public School. We anticipate the refurbished learning spaces will be completed by mid 2022.

Thank you for your patience and support throughout the delivery of the new preschool and upgrade works.

For more information contact:

School Infrastructure NSW
Email: schoolinfrastructure@det.nsw.edu.au
Phone: 1300 482 651
www.schoolinfrastructure.nsw.gov.au



Frequently asked questions

Why is the preschool moving?

Globe Wilkins Preschool currently occupies four classrooms at Wilkins Public School. Over time, enrolments at the school have increased and the school requires more learning spaces.

What will happen to the demountables on the school grounds?

The existing demountable classrooms will continue to be used as required.

How much outdoor play space does the new preschool have?

The new preschool facilities provide 400m² of unencumbered outdoor space, in line with the Education and Care Services National Regulations requirements for approximately 7m² for each child.

Who will operate the preschool in the future?

Inner West Council recently signed a licence agreement to operate the new preschool facilities until December 2026, with the opportunity for an extension until 2031. At the end of the licence period, operation of the new preschool facilities will be opened to a competitive tender and regulatory approval process. Should the council elect to do so, it will have the option to participate in the service provider tender process.

Contact us



Website

Stay up to date by visiting the School Infrastructure NSW website schoolinfrastructure.nsw.gov.au



Email

Contact the Community Engagement team by emailing schoolinfrastructure@det.nsw.edu.au



Phone

Contact us between 9:00am and 5:00pm, Monday to Friday on **1300 482 651**

For information about Wilkins Public School activities and operations, contact the school directly:

Principal: Davida Thomas

Website: wilkins-p.schools.nsw.gov.au

Email: wilkins-p.school@det.nsw.edu.au

Phone: 02 9560 3309

For information about Wilkins Globe preschool activities and operations, contact the preschool directly:

Email: globecc@innerwest.nsw.gov.au

Phone: 02 9392 5610

For more information contact:

School Infrastructure NSW
Email: schoolinfrastructure@det.nsw.edu.au
Phone: 1300 482 651
www.schoolinfrastructure.nsw.gov.au