

Wentworth Point Public School upgrade – Stage 2

As part of the NSW Government’s plan to rebuild public education, the 2024-25 Budget is delivering record education funding, including \$3.6 billion for new and upgraded schools in Western Sydney. This targeted investment will ensure growing communities get access to a world class public education.

A project to upgrade Wentworth Point Public School is in the early stages of construction. The project includes a new four storey building facing Burroway Road to cater for the growing population in the Wentworth Point community. It features:



26 new classrooms with shared common areas and multipurpose spaces



Ground floor support unit with 3 classrooms and dedicated amenities



Removal of demountable classrooms



Opening of play space



Artist impression of the new building from Burroway Road



Artist impression of the new building from inside school grounds

Wentworth Point Public School upgrade – Stage 2

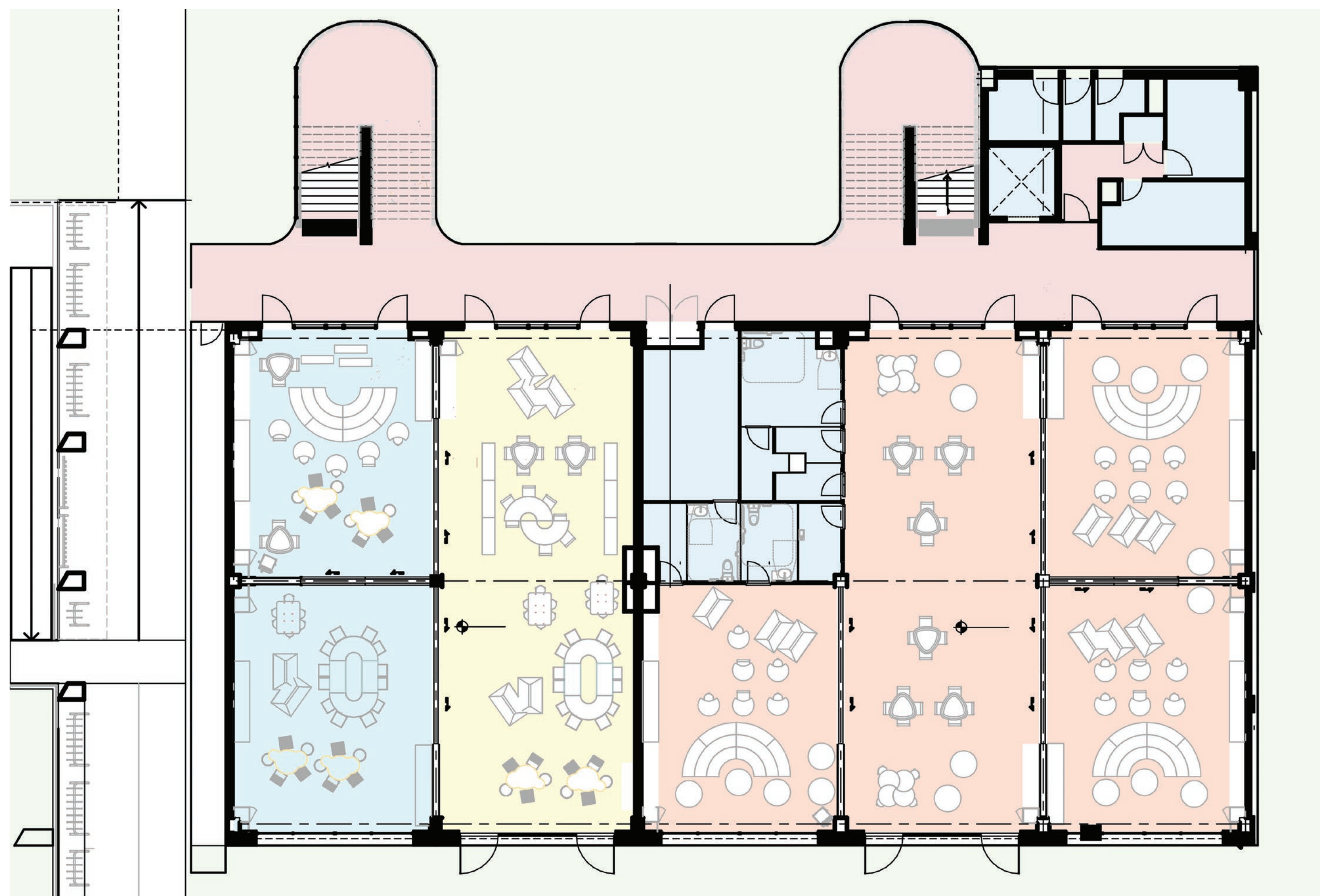
For more information
Phone: 1300 482 651
Email: schoolinfrastructure@det.nsw.edu.au
Website: schoolinfrastructure.nsw.gov.au



New learning clusters and contemporary classrooms

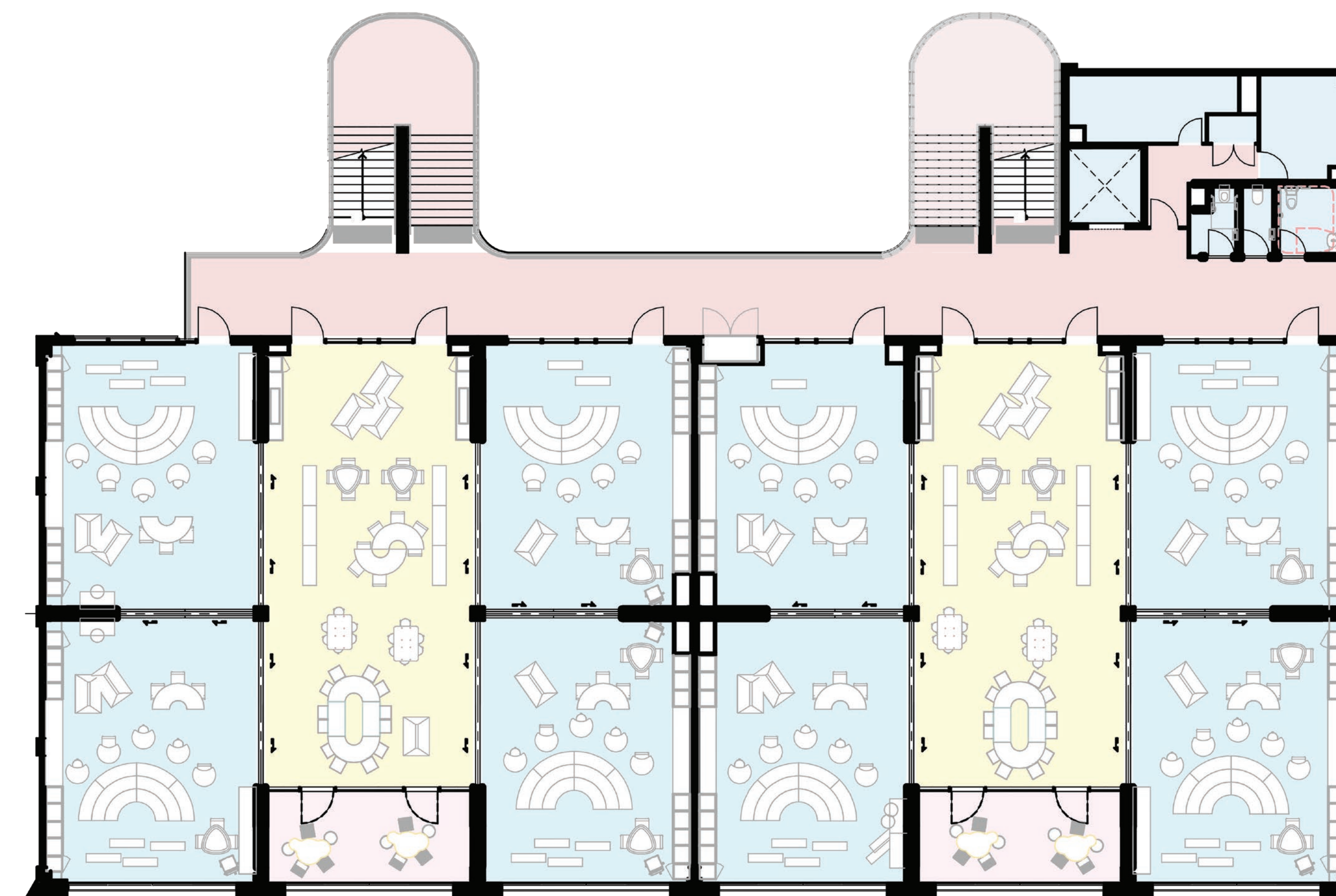
The new building will be 4 storeys high and contain a total of 26 new classrooms. The images below give an overview of the floor plans and an example of how furniture could be used in the spaces. Final design including colour, layout and furniture choices are underway in consultation with the school and will be finalised in coming months.

Ground floor plan



The ground floor contains a total of 5 classrooms, 3 of which are connected by a learning commons and equipped to be dedicated support learning unit classrooms. They are easily accessible and connected to change facilities and bathrooms. The ground floor also features two additional classrooms with a connected learning commons. A wide covered walkway will provide access to Burroway Road.

Typical floor plan



The first, second and third floors consist of two learning clusters each featuring four classrooms connected by a learning commons area and featuring a small multipurpose space. Learning commons are connected by large sliding doors that can be used to combine and design spaces to suit learning activities and team sizes. Flexible furniture arrangement in this space supports different learning settings.

Wentworth Point Public School upgrade – Stage 2

For more information

Phone: 1300 482 651

Email: schoolinfrastructure@det.nsw.edu.au

Website: schoolinfrastructure.nsw.gov.au



Maximising the school library space

The current open tiered layout of the library at Wentworth Point Public School is being modified to improve functionality.

As part of the upgrade we will be undertaking an internal reconfiguration by removing the tiered seating between the ground floor and first floor of the current library. This allows more floor space to fit the whole library collection on the ground/first floor, allowing better foot traffic through the ground floor with special programming zones on the ground and second floors.

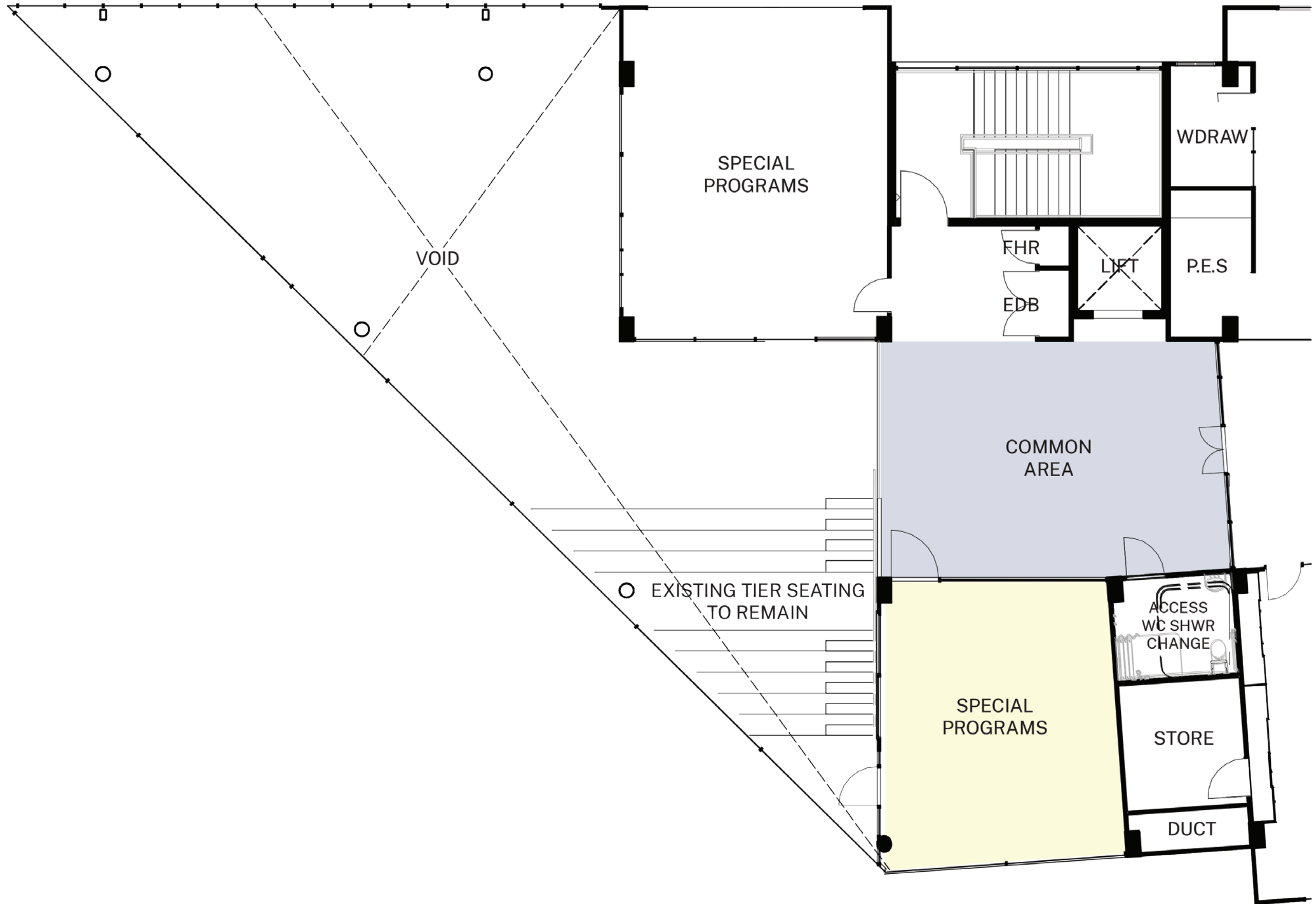
Ground floor plan



First floor plan



Second floor plan



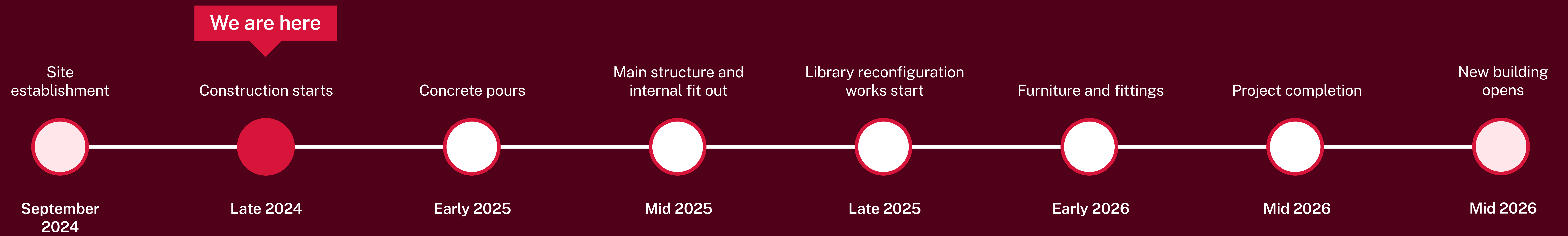
*This is a draft plan and subject to change. Final plans are being developed with the school and the contractor

Wentworth Point Public School upgrade – Stage 2

For more information
Phone: 1300 482 651
Email: schoolinfrastructure@det.nsw.edu.au
Website: schoolinfrastructure.nsw.gov.au



Timeline to completion



The Wentworth Point Public School upgrade –stage 2 works will be occurring Monday to Saturday for the duration of the project, during both school term and holiday periods. This is to ensure students have access to the new building and reconfigured library as soon as possible.

It is expected that the new building will be operational for students and staff to use by Term 3 2026 with the library reconfiguration works to occur alongside the new building works towards the second half of construction.



An example of a new raised pedestrian crossing outside Mosman High School

Safer crossing outside school

As part of the project to upgrade Wentworth Point Public School, we are pleased to confirm we will be building a new raised (wombat) crossing outside the school on Ferry Wharf Circuit.

This crossing was requested by the school community during early consultation on this upgrade and will provide an additional safe crossing point for students and families to walk safely to and from school.

The final location and design are being developed in conjunction with Sydney Olympic Park Authority (SOPA) who are the owners of the road.

It is expected the crossing will be completed in mid to late 2025 pending approvals.

We will update the community on the final location and timing in early 2025.

Wentworth Point Public School upgrade – Stage 2

For more information
Phone: 1300 482 651
Email: schoolinfrastructure@det.nsw.edu.au
Website: schoolinfrastructure.nsw.gov.au



Managing construction impacts

All work on the Wentworth Point Public School upgrade – Stage 2 will take place within the site compound which is now established on site.

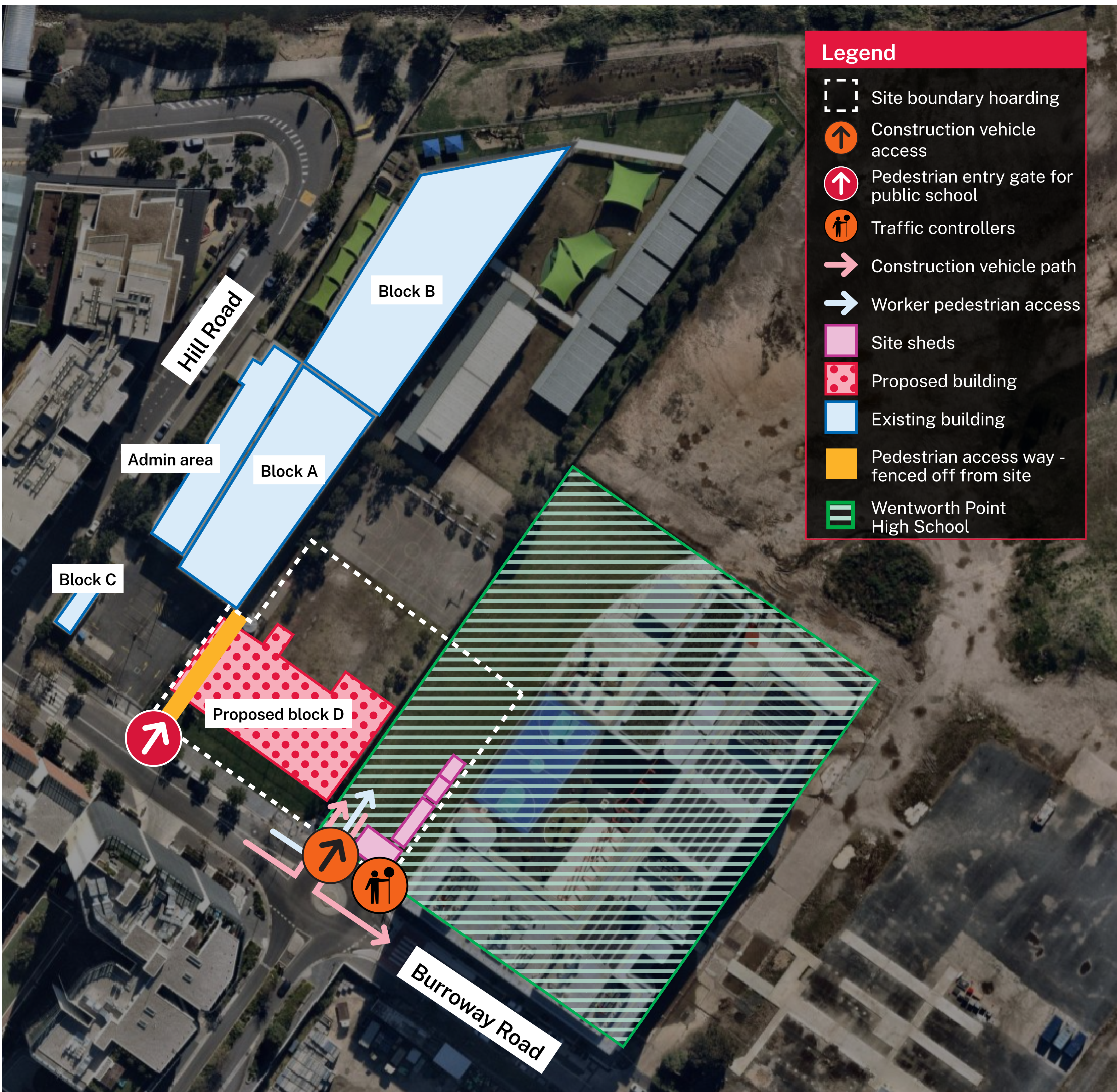
The contractor will work closely with School Infrastructure to minimise the impacts on the school community, including using dust and sound mitigation measures, and programming works around key activities within both Wentworth Point Public School and Wentworth Point High School.

Pedestrian access will remain in and outside of the school via Burroway Road and Ferry Wharf Circuit (Hill Road). A pedestrian walkway and tunnel will provide access to Burroway Road while works occur above it in later stages of the project. There will be some temporary short closures to this access, but these will be communicated to the community in advance.

The site compound includes part of the grassed areas of both Wentworth Point Public School and Wentworth Point High School.

We understand the temporary loss of play space for students is frustrating. Arrangements have been made for both schools to share playground access throughout construction. Details of these arrangements will be communicated directly by the school.

Work on the library reconfiguration will occur in the second half of 2025, during school holidays where possible to minimise disruption and access to this part of the school. We will provide more detail before these works start.



Wentworth Point Public School upgrade – Stage 2

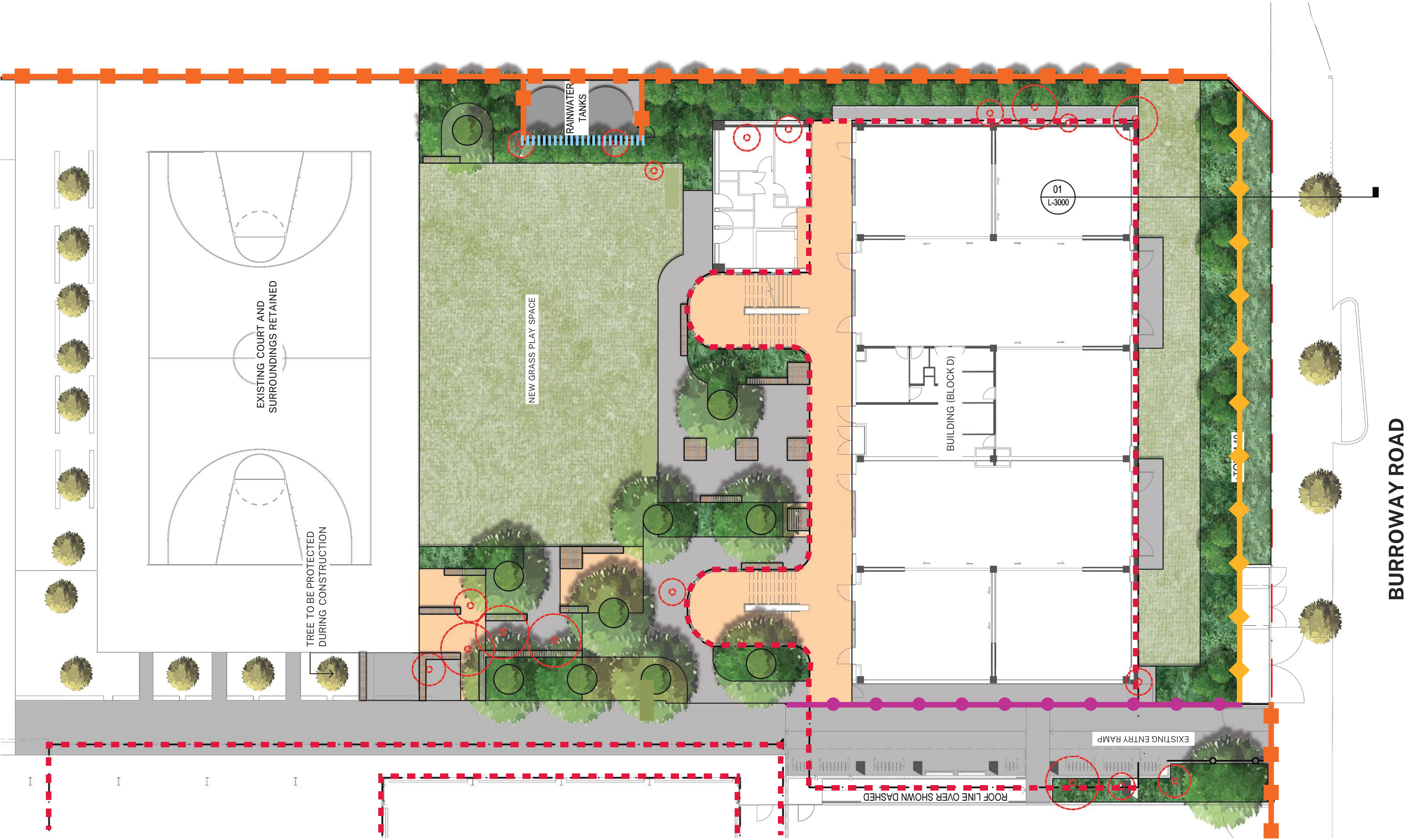
For more information
Phone: 1300 482 651
Email: schoolinfrastructure@det.nsw.edu.au
Website: schoolinfrastructure.nsw.gov.au



Landscaping concept

LEGEND

- Site boundary
- Existing fence to be retained
- New boundary fence 1200mm high on retaining wall
- New balustrade
- Screen to water tanks
- Platform seat
- Bench seating
- Proposed tree in raised steel planter (1m height x 1.8m round)
- Existing tree to be retained
- Existing tree to be removed
- Groundcover planting
- Turf



Wentworth Point Public School upgrade – Stage 2

For more information
Phone: 1300 482 651
Email: schoolinfrastructure@det.nsw.edu.au
Website: schoolinfrastructure.nsw.gov.au

