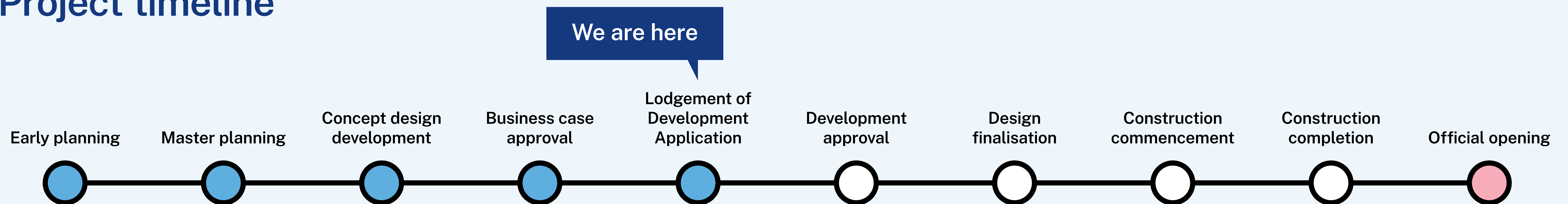


Project overview

The NSW Government is investing in public education infrastructure, with an upgrade to Wentworth Point Public School in planning. School Infrastructure NSW has undertaken a needs analysis and considered demographic trends for Wentworth Point to ensure the right project is delivered for the community.

The project is expected to deliver additional contemporary learning spaces, core facilities, and the reconfiguration of the library to better suit the needs of the school. Temporary classrooms will be removed and open space will be maximised with the completion of the project.

Project timeline



What's next?

A development application for the upgrade has been lodged with City of Parramatta and will be on public exhibition for three weeks in August 2023. The community or interested stakeholders will have the opportunity to provide feedback to Council directly. When the exhibition period is finished, council will review the Development Application and all input and issue approval once they are satisfied with the application. After the approval of the Development Application, a contractor will be appointed and will be able to commence construction. The contractor will work with School Infrastructure to determine a timeline for the completion of the work.

We look forward to sharing more information with you as the project progresses. In the meantime you can stay informed by regularly visiting the project web page and you can contact us via email or phone if you have any questions or feedback about the Wentworth Point Public School Upgrade.

Wentworth Point Public School upgrade Stage 2

For more information phone: 1300 482 651
Email: schoolinfrastructure@det.nsw.edu.au
schoolinfrastructure.nsw.gov.au

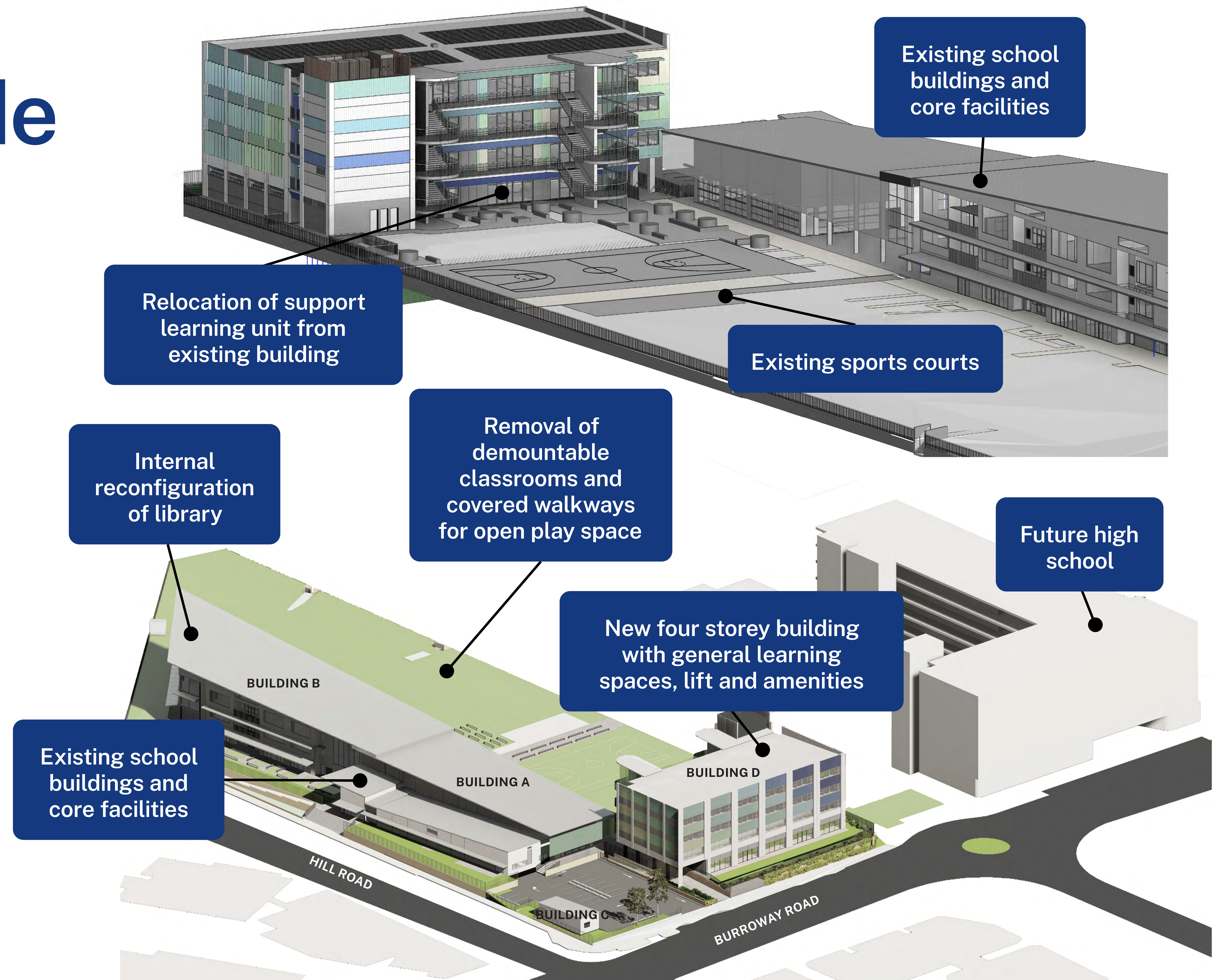
Proposed upgrade

The upgraded Wentworth Point Public school will cater for approximately 1,000 students with permanent facilities replacing the temporary demountable classrooms located on the site including up to 3 support learning classes.

The new building is set back from Burroway Road to support privacy for students and nearby residents.

Once the construction of the new building is complete, all temporary demountable classrooms will be removed from site.

Landscaping concepts and more detailed artist's impressions can be seen in other images.



**Indicative and subject to change.*

Wentworth Point Public School upgrade Stage 2

For more information phone: 1300 482 651
Email: schoolinfrastructure@det.nsw.edu.au
schoolinfrastructure.nsw.gov.au

Complementary design



View from Courtyard

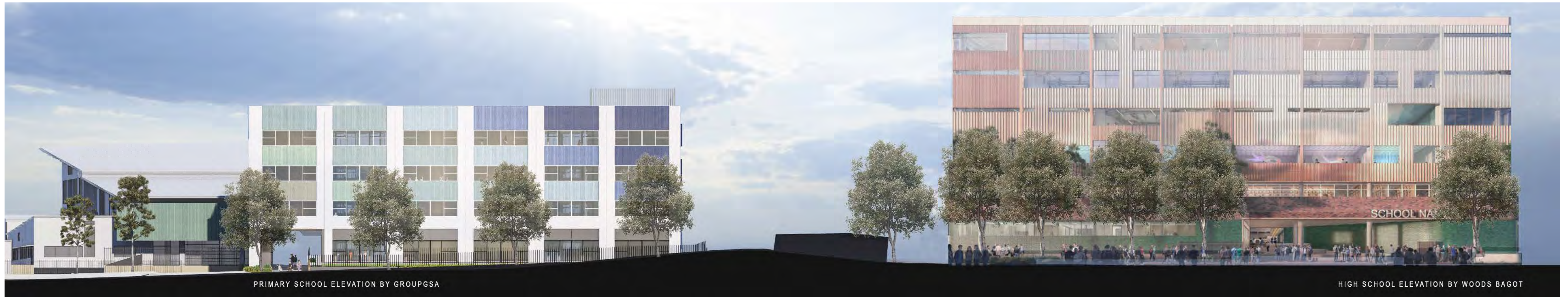


View from Burroway Road



View from Burroway Road

The Façade of the new building at Wentworth Point Public School has been designed to complement the colour and look of Wentworth Point new high school façade while remaining distinct and cohesive with the existing school facilities and colour scheme.



Burroway Road Street Elevation













**Colour and landscaping is indicative and subject to change through final design approval and landscaping.*

Wentworth Point Public School upgrade Stage 2

For more information phone: 1300 482 651
Email: schoolinfrastructure@det.nsw.edu.au
schoolinfrastructure.nsw.gov.au

Landscaping concept

LEGEND

-  Site boundary
-  Existing fence to be retained
-  New boundary fence 1200mm high on retaining wall
-  New balustrade
-  Screen to water tanks
-  Platform seat
-  Bench seating
-  Proposed tree in raised steel planter (1m height x 1.8m round)
-  Existing tree to be retained
-  Existing tree to be removed
-  Groundcover planting
-  Turf



**There are no expected changes to landscaping outside this area. It is anticipated when the demountables are removed they will be replaced with Turf. Final design subject to approval.*

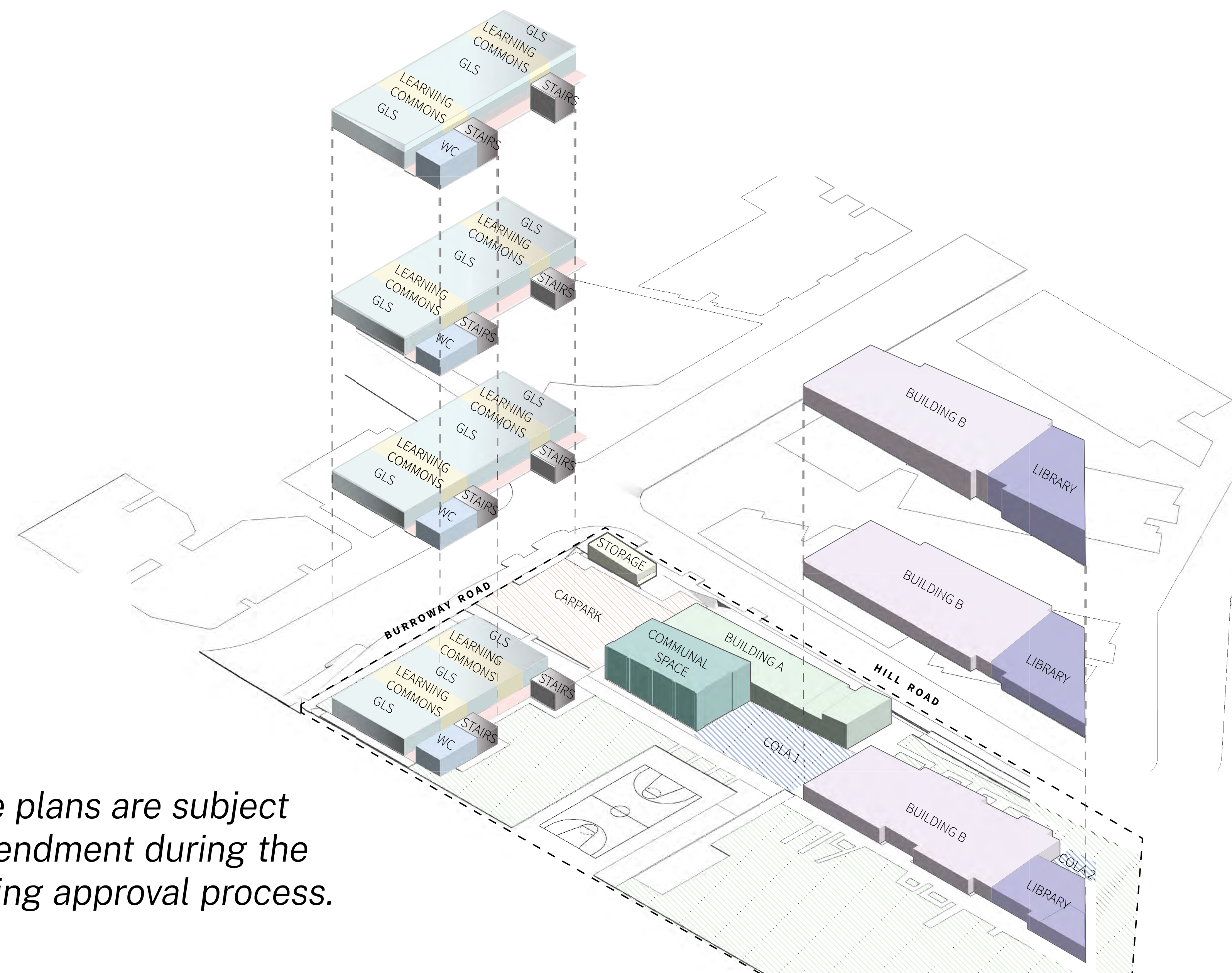
Wentworth Point Public School upgrade Stage 2

For more information phone: 1300 482 651
 Email: schoolinfrastructure@det.nsw.edu.au
schoolinfrastructure.nsw.gov.au

New learning clusters and contemporary classrooms

The new building will be four storeys high and contain a total of 29 new classrooms.

The layout features new learning clusters as per the new Educational Facilities and Schools Guidelines (EFSG) being rolled out by School Infrastructure NSW across all new schools.

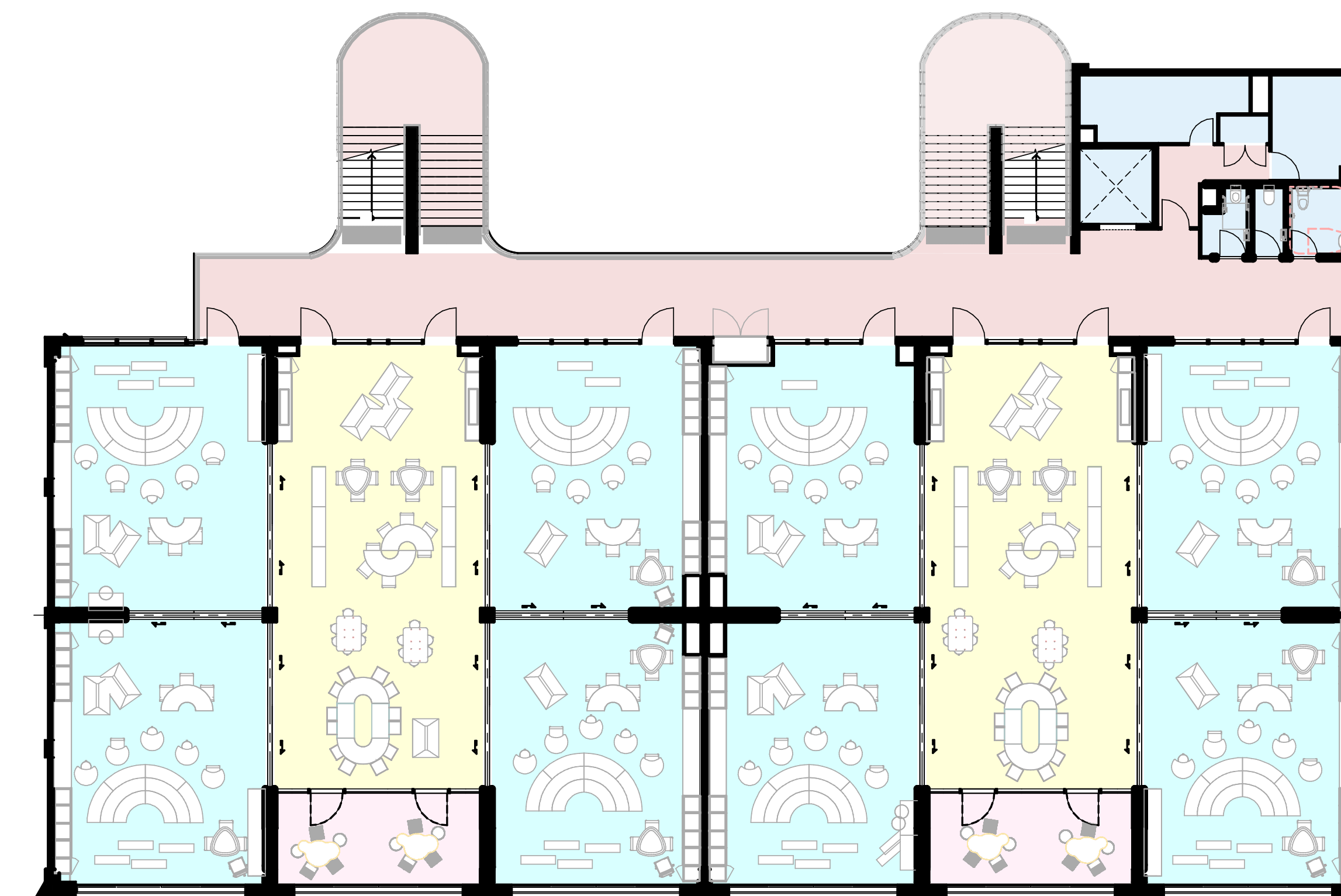


**These plans are subject to amendment during the planning approval process.*



Ground Floor Plan

The ground floor contains a total of 5 General Learning spaces, 3 which are connected by a learning commons and equipped to be dedicated support learning unit classrooms. They are easily accessible and connected to change facilities and bathrooms. The ground floor also features two additional general learning spaces with a connected learning commons.



Typical Floor Plan

The first, second and third floors consist of two learning clusters each featuring four general learning spaces connected by a learning commons area. Learning commons are connected by large sliding doors that can be used to combine and design spaces to suit learning activities and team sizes. Flexible furniture arrangement in this space supports different learning settings.

Wentworth Point Public School upgrade Stage 2

For more information phone: 1300 482 651
Email: schoolinfrastructure@det.nsw.edu.au
schoolinfrastructure.nsw.gov.au

A more effective library space

The current open tiered layout of the library at Wentworth Point Public School is being modified to improve functionality.

As part of the upgrade we will be undertaking an internal reconfiguration by removing the tiered seating between the ground floor and first floor of the current library. This allows more floor space to fit the whole library collection on the ground/first floor, allowing better foot traffic through the ground floor with special programming zones on the ground and second floors.

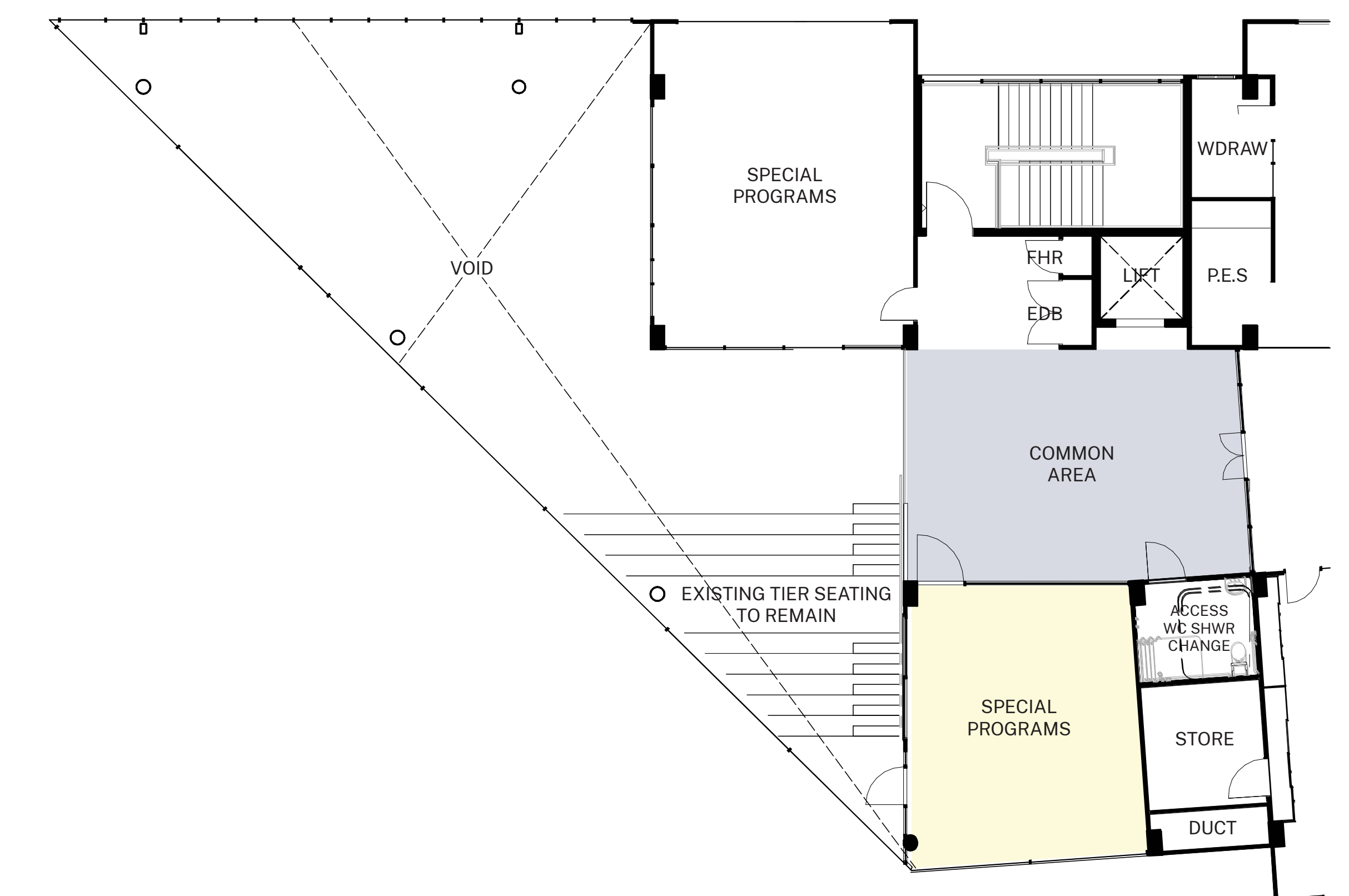
Ground Floor Plan



First Floor Plan



Second Floor Plan



**These plans are subject to amendment during the planning approval process.*

Wentworth Point Public School upgrade Stage 2

For more information phone: 1300 482 651
Email: schoolinfrastructure@det.nsw.edu.au
schoolinfrastructure.nsw.gov.au

How standardised learning hub layouts work in practice

STEP 1



STEP 2



STEP 3



STEP 4

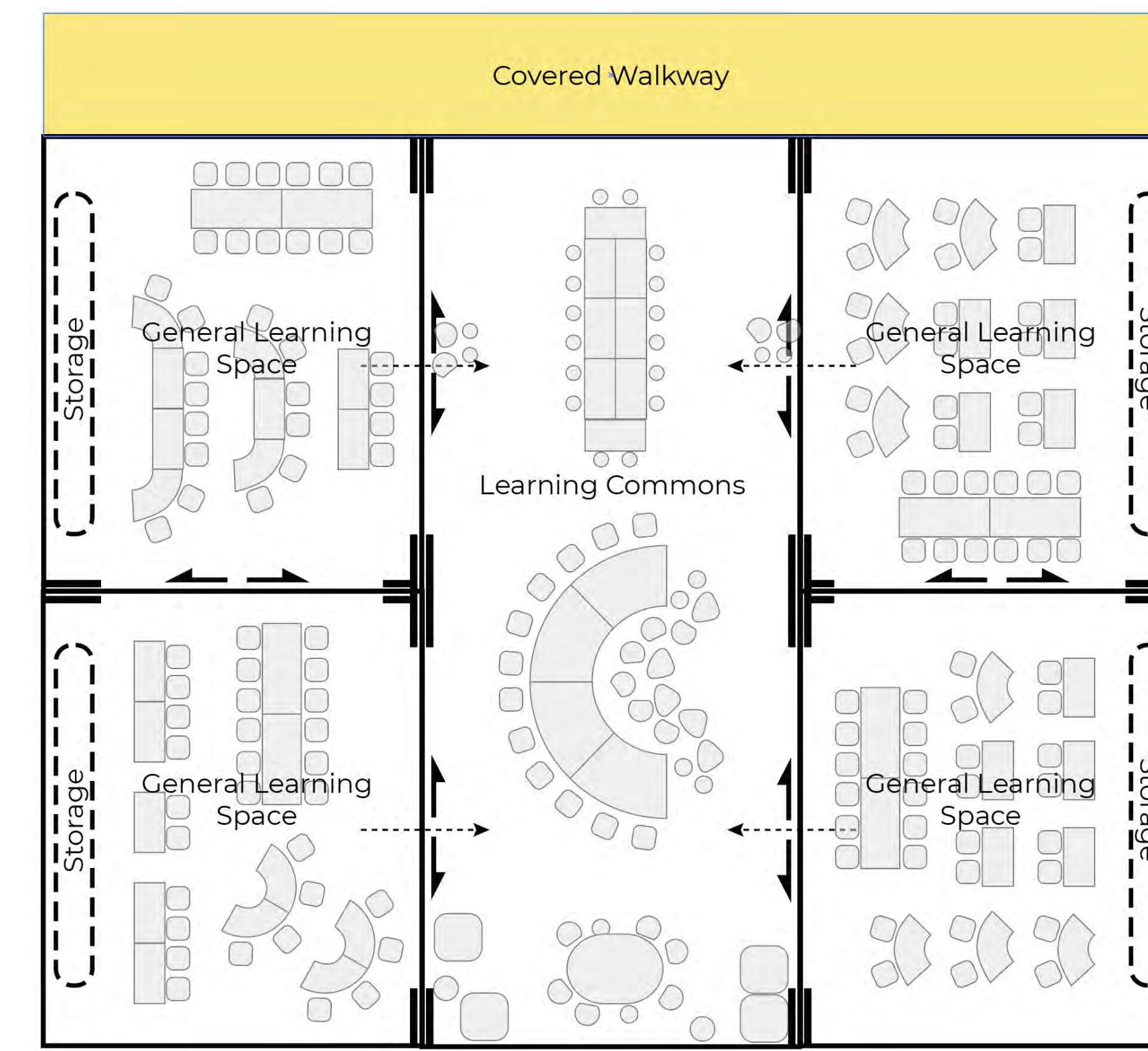
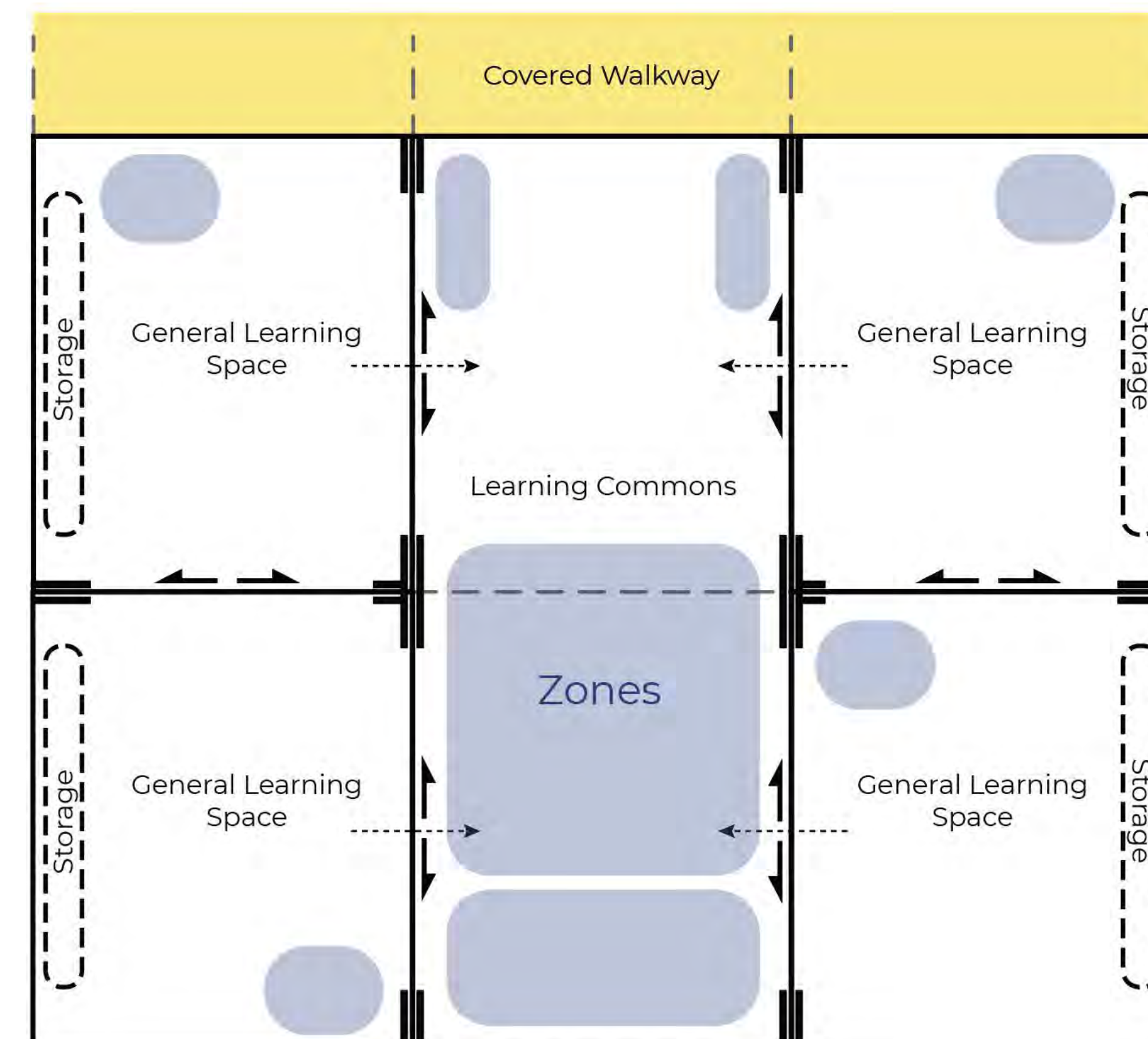
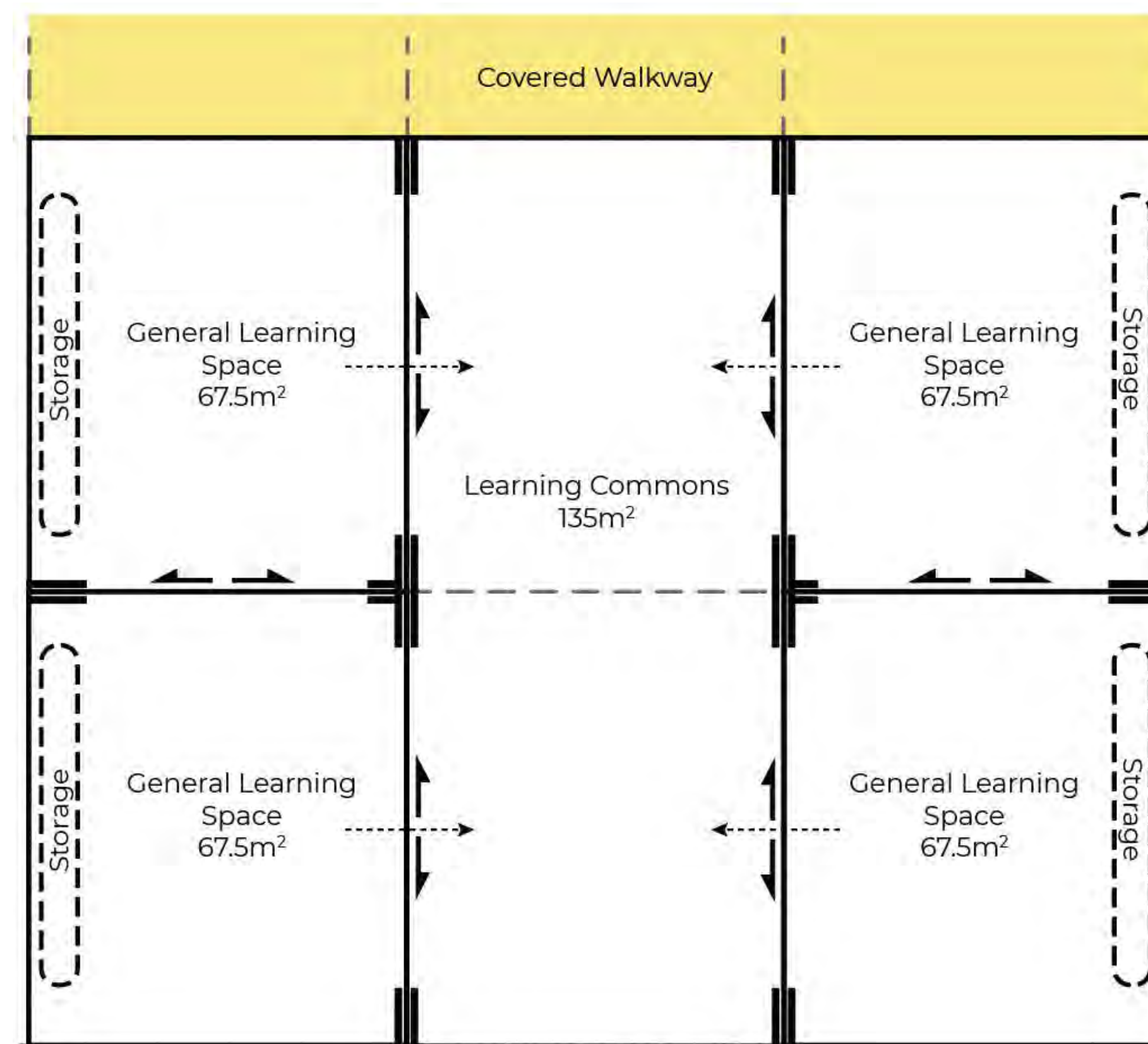


Standardised design for a school learning hub, featuring 4 learning spaces and a learning commons.

The design is modified to suit the school context outlined in the education rationale. Schools can include practical activity areas (PAAs), STEM spaces or other multi-purpose spaces (MPSs) that support collaboration, preparation or sensory needs.

Furniture settings are selected to align to local teaching and learning requirements. Furniture selection is supported by professional learning and other resources.

From a 2D plan to a flexible learning space, ready for students to engage in their learning activities.



How we build and upgrade schools

In all our new schools or school upgrades when working on design, we must meet our Educational Facilities Standards and Guidelines (EFSG) for both indoor and outdoor education facilities. The guiding principles of the EFSG provide our vision for learning environments and are enriched by the needs and goals of the school and local community. These guidelines guarantee that all new schools and school upgrades align with the NSW Department of Education's vision and can deliver the Australian curriculum while allowing the school community to contribute ideas towards making the school their own.

Want to know more about how we build and upgrade schools?

We design and deliver schools to suit the individual needs of the local school community. We harness opportunities and solve challenges. As a result, no two schools are exactly the same.

What remains consistent is school infrastructure that empowers teachers to prepare students with the skills and capabilities they need to thrive in a rapidly changing and interconnected world.

Take a look at some of the upgrades we have delivered and see how these varied spaces support teaching and learning.

Visit edu.nsw.link/SchoolShowcase or scan the QR code.

