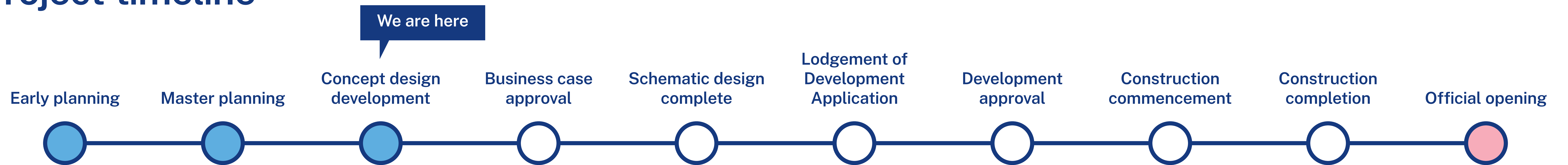


Project overview

The NSW Government is increasing its investment in public education infrastructure, with an upgrade to Wentworth Point Public School announced as part of the 2021/22 NSW Budget. School Infrastructure NSW has undertaken a needs analysis and considered demographic trends for Wentworth Point to ensure the right project is delivered for the community.

The project is expected to deliver additional contemporary learning spaces, core facilities and the reconfiguration of the library to better suit the needs of the school. Temporary demountable classrooms will be removed and open space will be maximised with the completion of the project.

Project timeline



What's next?

We will continue to work with key stakeholders so that we can deliver high quality education infrastructure for the local community. The next phase of planning aims to further develop the design to confirm the final layout of the school and its facilities. The concept design for Wentworth Point Public School upgrade – Stage 2 will be refined in consultation with a range of stakeholders with expertise in the design and operation of schools including the school principal, construction specialists, and the community.

We look forward to sharing more information with you as the project progresses. In the meantime you can stay informed by visiting the project web page or contact us via email or phone if you have any questions or feedback about the Wentworth Point Public School upgrade.

Wentworth Point Public School upgrade Stage 2

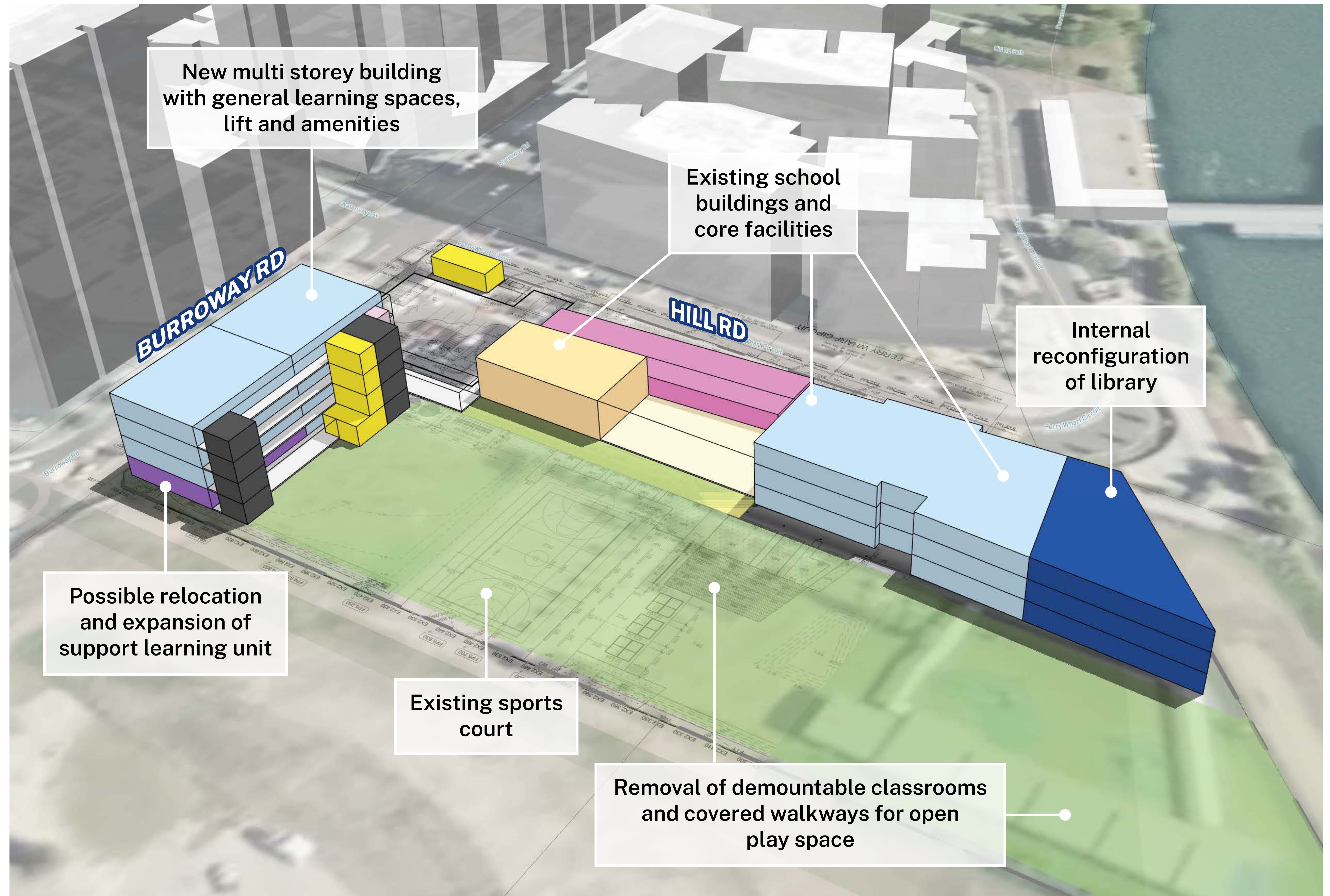
For more information phone: 1300 482 651
Email: schoolinfrastructure@det.nsw.edu.au
schoolinfrastructure.nsw.gov.au

Master plan

Proposed building

New buildings with general learning spaces, amenities and reconfiguration of the library within the existing building to improve functionality.

The master plan is subject to amendment during the next stages of design, as well as NSW Treasury and statutory planning approval.



**Indicative and subject to change.*

Wentworth Point Public School upgrade Stage 2

For more information phone: 1300 482 651
Email: schoolinfrastructure@det.nsw.edu.au
schoolinfrastructure.nsw.gov.au

Flexible learning spaces

Contemporary learning and teaching prepares students for a diverse and interconnected world. We are evolving the ways we teach our students new skills valued by a changing workforce, understand different ways students learn and support new ways of interacting with information through technology.

Flexible learning spaces are designed and equipped to support contemporary learning and teaching.

What makes a flexible learning space?



Learning space

- Different zones (areas of a building or floors) are designed to support a range of activities sometimes grouped by subject area
- Varied furniture allows for student choice, comfort and flexibility
- Spaces are flexibly connected allowing students to work in varied group sizes
- Connection between indoor and outdoor learning spaces



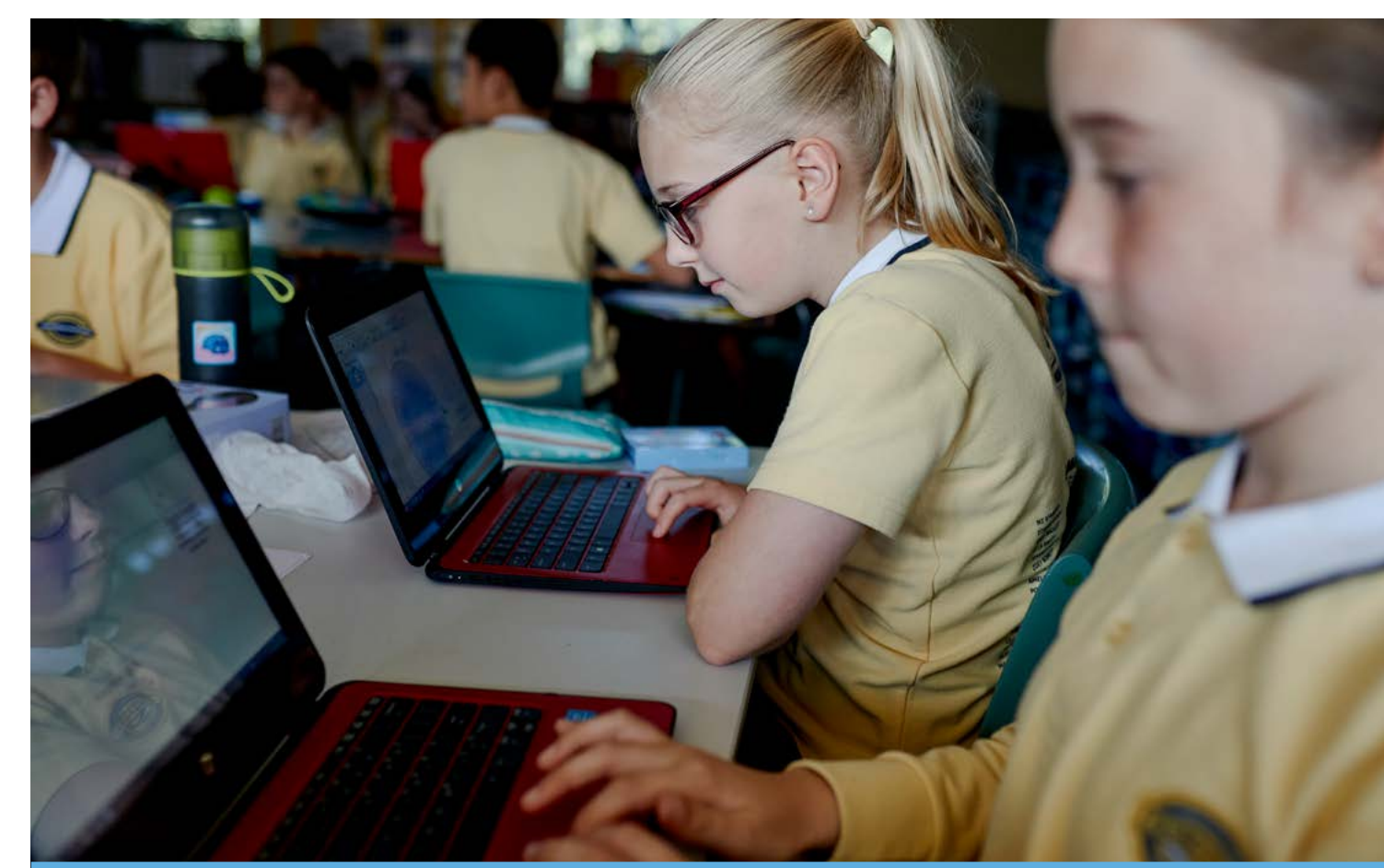
Organisation

- Movement is encouraged for students and teachers to collaborate and interact
- More than one teacher may be available to students within the learning environment
- Students learn in classes, small groups or individually



Teaching and learning

- Learning is personalised
- Learning is connected across different subject areas
- There is a focus on creativity and innovation with students prototyping, testing and using technology in creative ways



Technology

- Technology is integrated into spaces to extend learning opportunities
- WiFi is available everywhere including outdoors
- Specialist equipment is available for students to innovate, communicate and create

How we build and upgrade schools

In all our new schools or school upgrades when working on design, we must meet our Educational Facilities Standards and Guidelines (EFSG) for both indoor and outdoor education facilities. The guiding principles of the EFSG provide our vision for learning environments and are enriched by the needs and goals of the school and local community. These guidelines guarantee that all new schools and school upgrades align with the NSW Department of Education's vision and can deliver the Australian curriculum while allowing the school community to contribute ideas towards making the school their own.

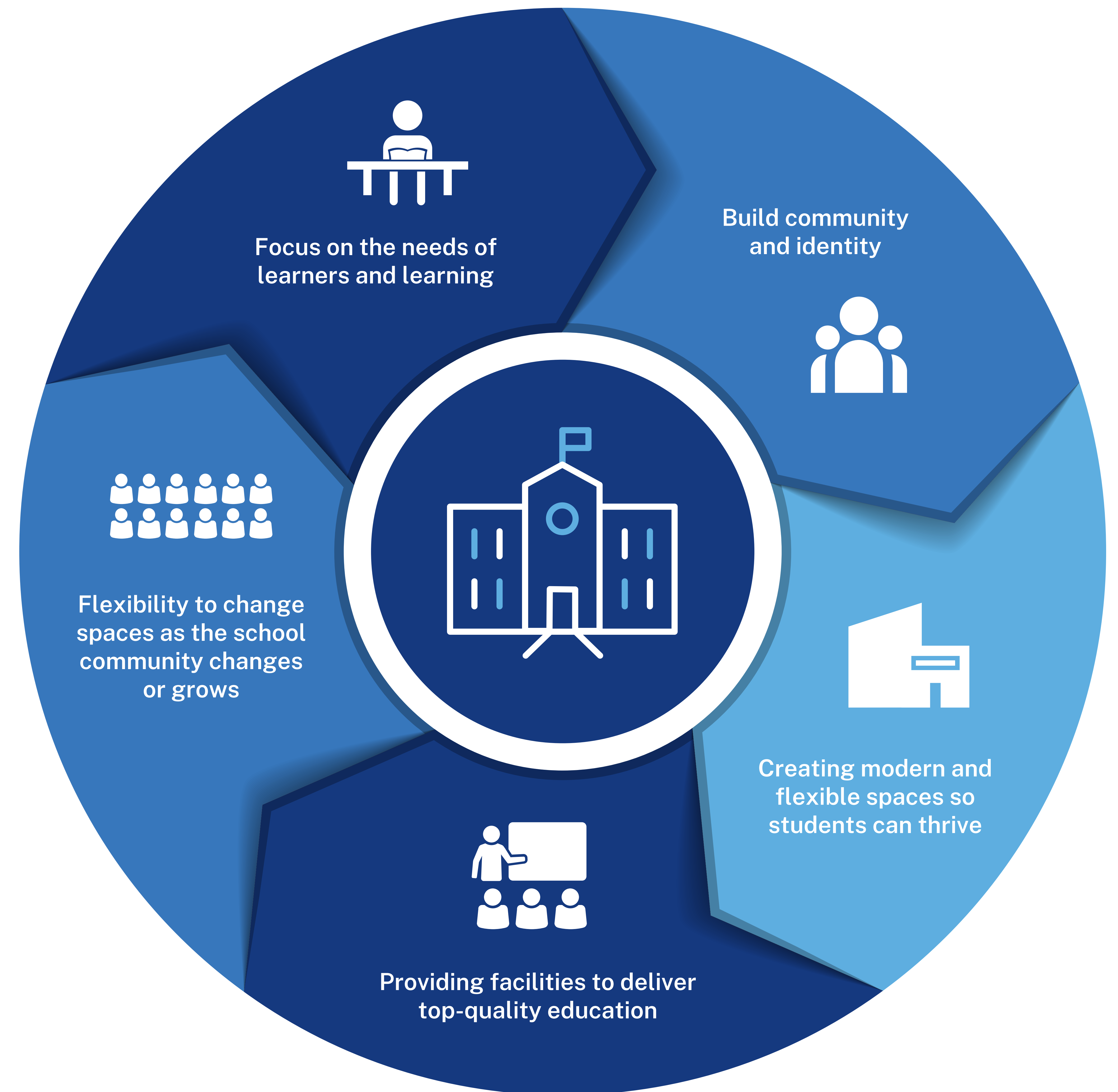
Want to know more about how we build and upgrade schools?

We design and deliver schools to suit the individual needs of the local school community. We harness opportunities and solve challenges. As a result, no two schools are exactly the same.

What remains consistent is school infrastructure that empowers teachers to prepare students with the skills and capabilities they need to thrive in a rapidly changing and interconnected world.

Take a look at some of the upgrades we have delivered and see how these varied spaces support teaching and learning.

Visit edu.nsw.link/SchoolShowcase or scan the QR code.



How we build and upgrade schools

Early planning

- Consideration and studies of demographic trends, education requirements, the condition of the existing school buildings, catchment boundaries, heritage requirements, transport links and partnership opportunities.
- Doing so means that we:
 - consider the needs of the local area now and into the future
 - ensure the right school is designed for the community.
- An important step before an architect or other contractors are appointed and official community engagement commences.

Planning

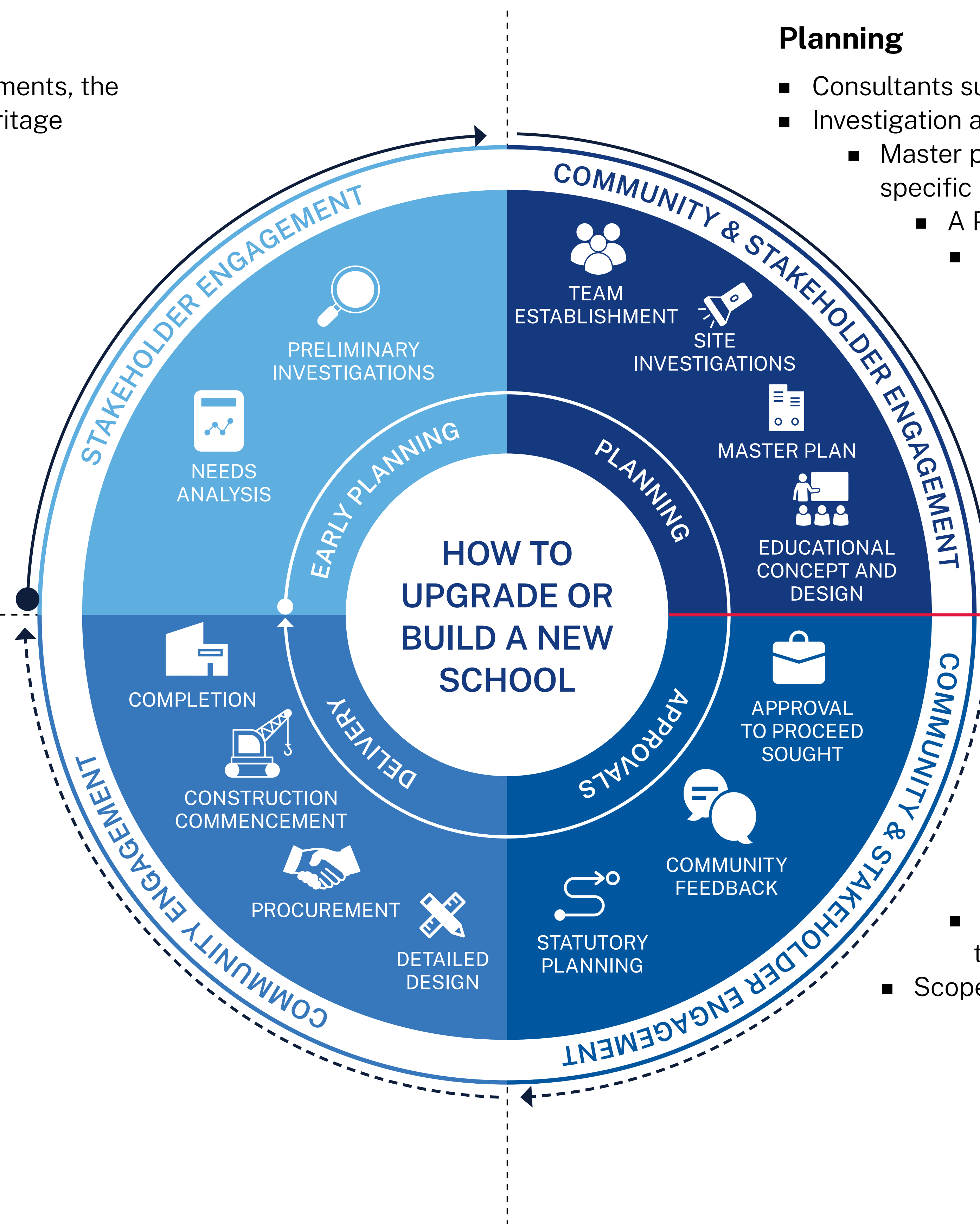
- Consultants such as architects and project managers are appointed.
- Investigation and review of site and development of master plan options.
 - Master planning considers options for the general size, shape and form of buildings for a specific school site.
 - A Project Reference Group (PRG) is established.
 - Operational, educational and service delivery factors are understood and considered by the PRG.
 - A series of preliminary master plan options are considered along with the educational concept and design for the school.
 - A preferred concept design option is identified.
 - Once a preferred option is identified approval is needed in order to progress from planning through to project delivery.

Delivery

- The construction works program to deliver the upgrade to the school is developed in collaboration with the school and where appropriate, the local community.
- Ongoing consultation with Principal, staff and other school users.
- Throughout detailed design and construction, updates are provided to the local community.

Approvals

- Workshops continue with school and local community to understand challenges and constraints and identify future requirements.
- Engagement of technical specialists, local councils and other government agencies.
 - Statutory planning approval process.
 - Opportunity for local community to view and provide feedback upon submission of the Development Application.
- Scope of work and concept design is further defined.



How standardised learning hub layouts work in practice

STEP 1



STEP 2



STEP 3



STEP 4



Standardised design for a school learning hub, featuring 4 learning spaces and a learning commons.

The design is modified to suit the school context outlined in the education rationale. Schools can include practical activity areas (PAAs), STEM spaces or other multi-purpose spaces (MPSs) that support collaboration, preparation or sensory needs.

Furniture settings are selected to align to local teaching and learning requirements. Furniture selection is supported by professional learning and other resources.

From a 2D plan to a flexible learning space, ready for students to engage in their learning activities.

