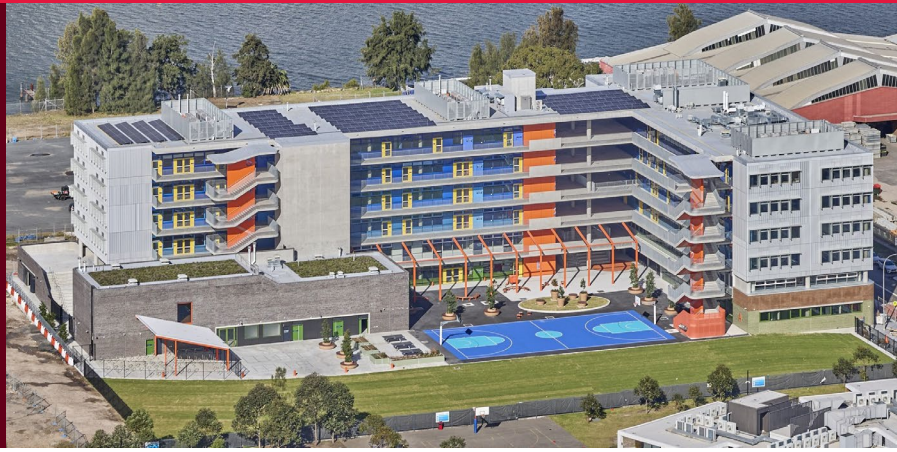


Wentworth Point High School

June 2024



As part of the NSW Government's plan to rebuild public education, the 2024-25 Budget is delivering record education funding, including \$3.6 billion for new and upgraded schools in Western Sydney. This targeted investment will ensure growing communities get access to a world class public education.

About Wentworth Point High School

A new public high school is opening in 2025 to cater for the growing population in the Wentworth Point, Sydney Olympic Park, Newington, Silverwater and Rhodes communities.

The new school includes a six-storey building with two wings, attached to a movement studio and amenities building.

The layout of the school creates a central courtyard for students that is physically separated and protected from the surrounding streets. The school is arranged by learning units with specialist learning spaces in one wing (Burroway Road side), and general learning spaces in the other.



Flexible teaching and learning spaces for approximately 1500 students



Performing arts spaces including dedicated movement studio.



Support Unit Learning on ground floor with direct access to play space



multipurpose spaces (community and shared spaces)

Have your say on the new school logo, uniforms, bell times, language and values

The opening of a new school provides an opportunity to create new school values and make decisions about how the school will operate for years to come. It is a unique time for the community to help inform the decision making for the new high school.

We invite you to participate in a consultation survey at edu.nsw.link/WPHS-survey or by scanning the QR code.

Survey responses close Sunday 7 July 2024

Logo ideas can also be submitted via email by 17 July 2024 to: wentworthpoint-h.school@det.nsw.edu.au



For more information

Phone: 1300 482 651

Email: schoolinfrastructure@det.nsw.edu.au

Website: schoolinfrastructure.nsw.gov.au

