

Wentworth Point High School

A new public high school is opening in 2025 to cater for the growing population in the Wentworth Point, Sydney Olympic Park, Newington, Silverwater and Rhodes communities.

The new school includes a six-storey building with two wings, attached to a movement studio and amenities building.

The layout of the school creates a central courtyard for students that is physically separated and protected from the surrounding streets. The school is arranged by learning units with specialist learning spaces in one wing (Burroway Road side), and general learning spaces in the other.



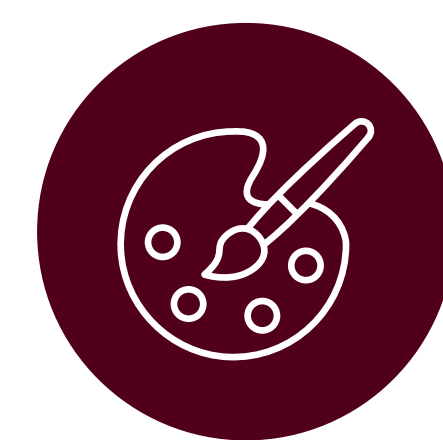
Flexible teaching and learning spaces for approximately 1500 students



Performing arts spaces including dedicated movement studio.



Support Unit Learning on ground floor with direct access to play space



Specialist spaces for wood and metal work, science, industrial kitchens and visual arts including dark room



Wentworth Point High School

For more information

Phone: 1300 482 651

Email: schoolinfrastructure@det.nsw.edu.au

Website: schoolinfrastructure.nsw.gov.au



Shaping your new school

In addition to the new modern new facilities, the opening of a new school provides an opportunity to create new school values and make decisions about how the school will operate for years to come. It is a unique time for the community to help inform the decision making for the new high school in the following areas:

Values

Public Schools in NSW share the responsibility for teaching values with families and the community. While values are learnt predominantly in the home and modified through relationships and life experiences, parents and the community have high expectations about commonly held values also being taught in schools.

Uniforms

NSW Public Schools support the wearing of school uniforms, which promote a sense of belonging for students and creates a positive identity for the school community. School uniforms also contribute to the personal safety of students by allowing easier recognition of students inside the school and within the community.

Logo

School logos represent the unique identity and location of a school. They are included on school uniforms and branding such as websites and communications.

Languages

NSW schools need to deliver 100 hours of a compulsory language (other than English) in Stage 4.

School hours

The start and end of the school day is determined by the needs of the community. Wentworth Point High School will need to start and finish either prior to or after Wentworth Point Public School to allow for best traffic flow.



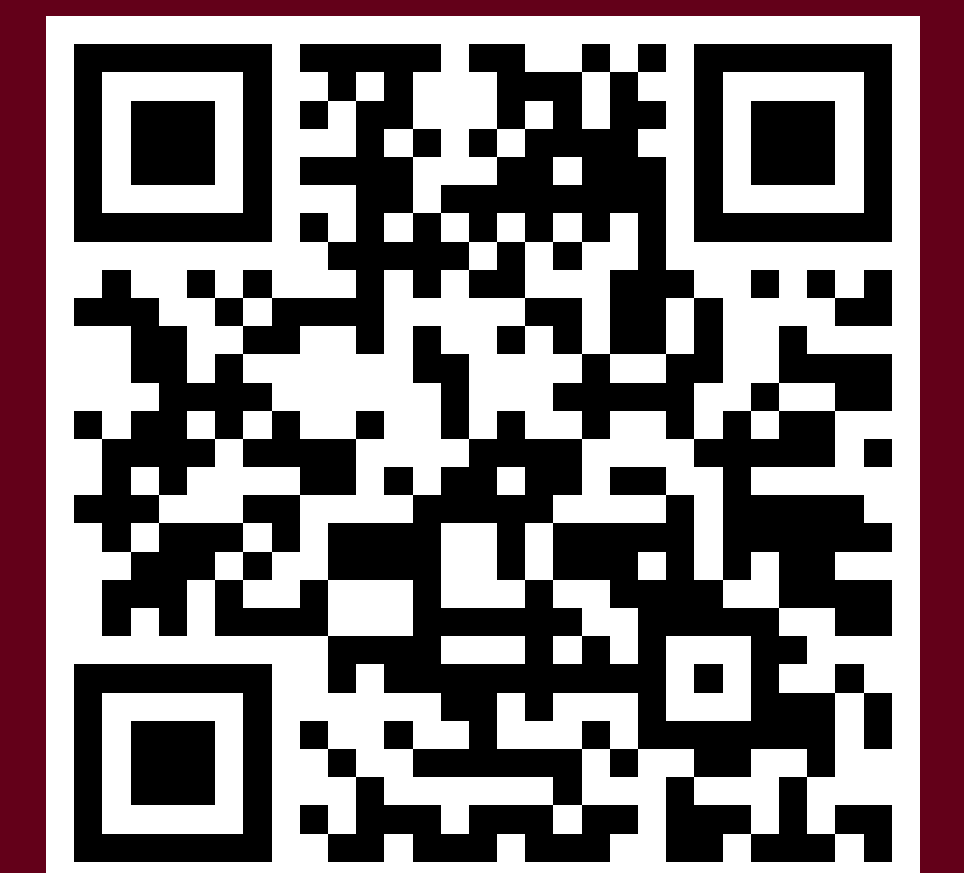
Shared common in the near complete school

Have your say

We invite you to participate in a school consultation survey to help inform decision-making on the new high school's logo, motto/values, uniform, language and bell times on edu.nsw.link/WPHS-survey or by scanning the QR code.

Survey responses close Sunday 7 July 2024

Logo ideas can also be submitted via email by 17 July 2024 to: wentworthpoint-h.school@det.nsw.edu.au



Wentworth Point High School

For more information

Phone: 1300 482 651

Email: schoolinfrastructure@det.nsw.edu.au

Website: schoolinfrastructure.nsw.gov.au

