

Wentworth Point new high school

Works notification | 20 October 2023

Overnight removal of pile rig on Tuesday 24 October 2023

A pile rig, used to drill holes for inserting the structural columns for the bike store and other external areas, will be removed from site in the early hours of Tuesday 24 October 2023 at approximately 2 am.

The pile rig is oversized equipment and therefore required to be removed from site after hours to meet Transport for NSW requirements to keep the road network clear.

The rig will be removed on a semi-trailer, travelling out from the construction site via Burroway Road and Hill Road.

A number of precautions will be in place to minimise noise, however some noise, including reversing beeps maybe unavoidable. If the removal is unable to be undertaken on October 24 due availability, it will take place at approximately the same time on one of the following two mornings, October 25 or October 26.

The out of hours work is for the removal only. Routine work will restart during the usual weekday working hours of 7 am to 6 pm.

Temporary lane closures on Burroway Road from Monday 30 October 2023

The final stage of completing the installation of the critical water and wastewater infrastructure for the new high school involves digging a trench for the installation of a new 'flushing' point for the sewer line adjacent to the Burroway Road roundabout.

The work will include temporary impacts to a section of Burroway Road. This includes changes to pedestrian access, partial road and footpath closures and the temporary loss of the two short term parking spaces alongside Wentworth Point Public School. See the map on the next page to see the work area.

These works are expected to take place during usual construction hours, Monday to Friday between 7 am and 6 pm from Monday 30 October 2023 and are expected to be complete in approximately two weeks dependent on weather.

Toward the end of these works, one night shift will be undertaken to finalise the connection. It is not expected this will cause any additional noise.

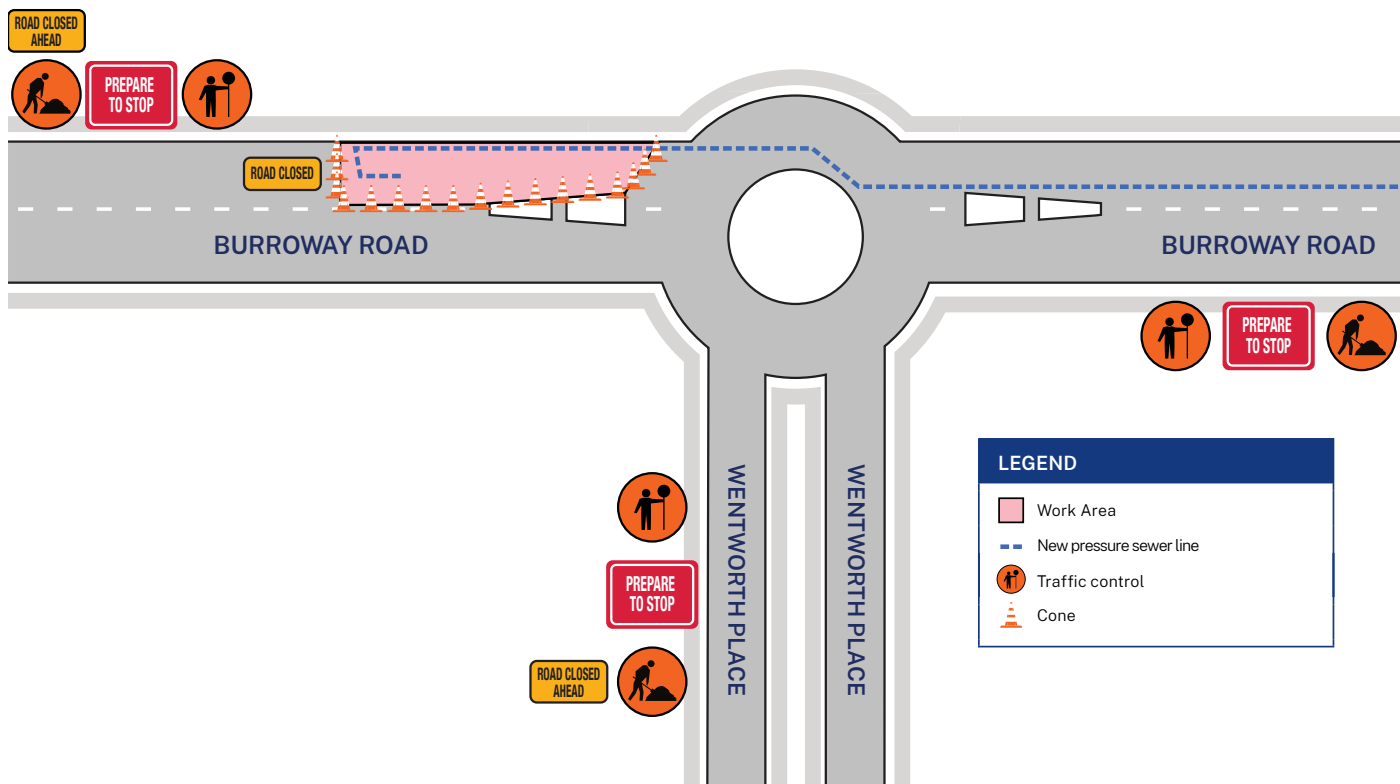
At the start of each shift the construction zone and traffic control will be set up to close the section of the road. Outside of the construction hours the trenches will be covered with road plates allowing the road and roundabout to return to normal function.

Please be assured that access to Burroway Road and Wentworth Place will remain open at all times.

Across the work area, traffic management will be in place to divert traffic safely around the road closures and existing pedestrian closures. This includes dedicated traffic controllers during work hours, signage and barriers around the work.

There will be some additional noise created during this work from the concrete cutting of the road, but live noise monitoring equipment will be in place to ensure works are within the allowable noise range.

Drivers are encouraged to adhere to all traffic management and road signage for safety of the community.



Staying informed

School Infrastructure NSW will continue to share updates as the project progresses.

Visit the project website at edu.nsw.link/WPNHS or scan the QR code for all the project details, project updates and documentation or register via the form on the 'Get involved' tab to have project updates and notifications like this emailed to you.

Thank you for your patience while we deliver this important new school infrastructure.

