

Recent revision history	#	Status	Description	Date
1	1	For Information	For Information	21/12/20
2	2	For Information	For Information	22/01/25
3	3	Drawing Updates	Drawing Updates	22/09/02
A	A	IFC Facade Drawing Issue	IFC Facade Drawing Issue	22/09/26
B	B	AFC Facade Drawing Issue	AFC Facade Drawing Issue	22/10/14
C	C	Finishes Update - Roof Plant	Finishes Update - Roof Plant	23/05/18

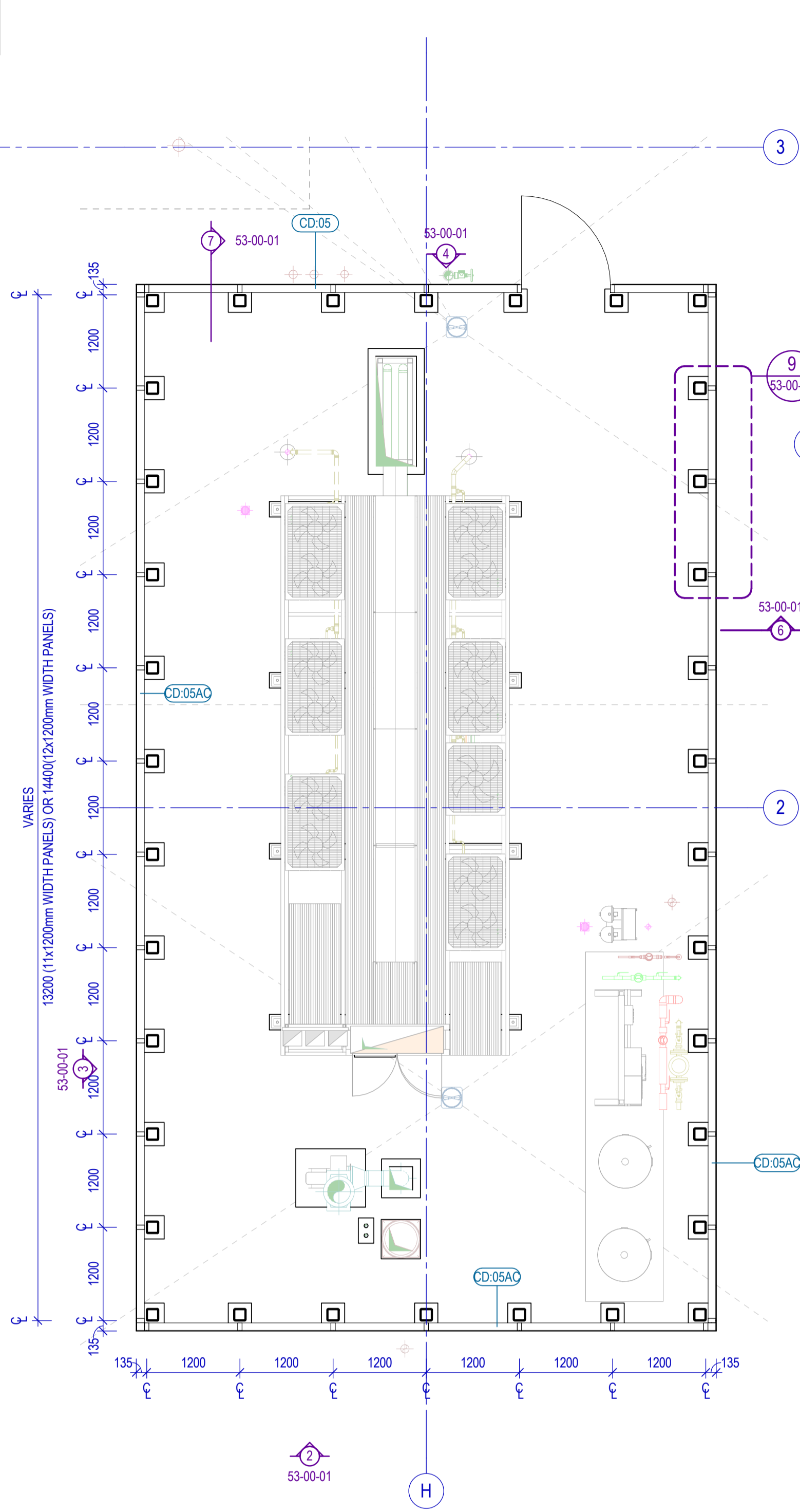
Notes
 Copyright © Woods Bagot 2018
 All Rights Reserved
 No material may be reproduced without prior permission
 Contractor must verify all dimensions on site before commencing work or preparing shop drawings.
 Do not scale drawings.

ENCLOSURE LEGEND

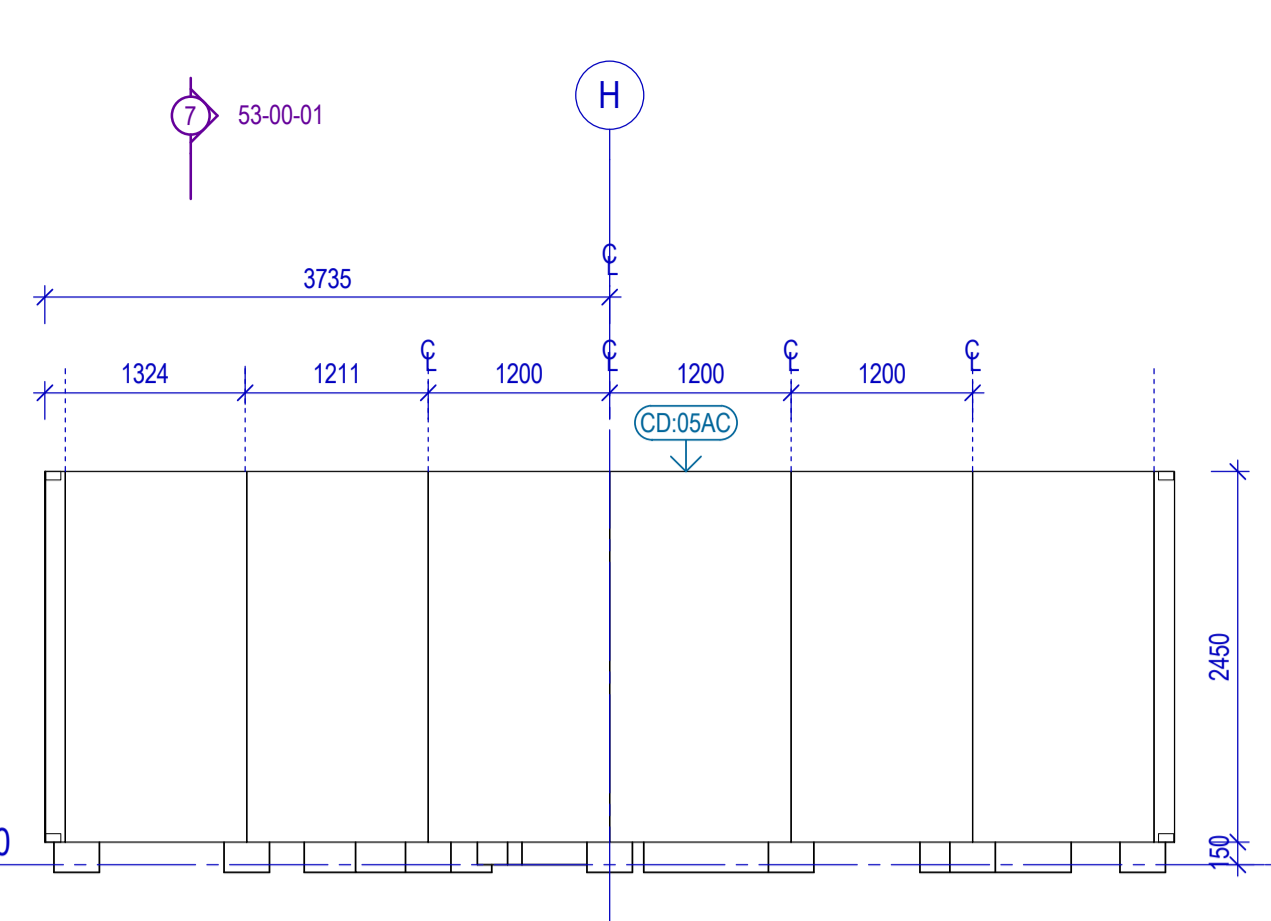
- CU:XX REFER TO CU SCHEDULE
- CD:XX REFER TO CD SCHEDULE
- MA:XX REFER TO MA SCHEDULE
- FM:XX REFER TO FM SCHEDULE
- WD:XX REFER TO WD SCHEDULE
- CE:XX REFER TO CE SCHEDULE
- SE:XX REFER TO SE SCHEDULE
- PF:XX REFER TO FFE SCHEDULE
- MW:XX REFER TO MW SCHEDULE
- DP DOWNPIPE

UNDER REVIEW / ON HOLD

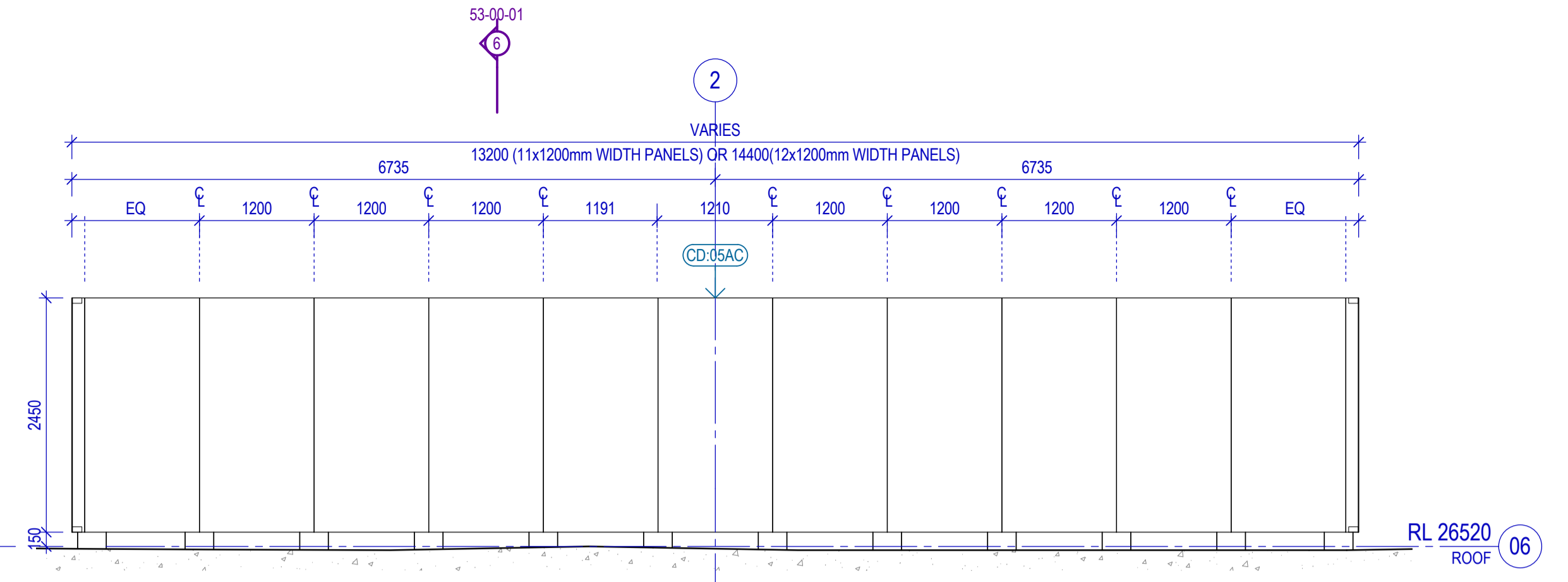
NOTES:
 TO BE READ IN CONJUNCTION WITH
 • LANDSCAPE DRAWINGS
 • CIVIL ENGINEER DRAWINGS
 • STRUCTURAL ENGINEERS DRAWINGS



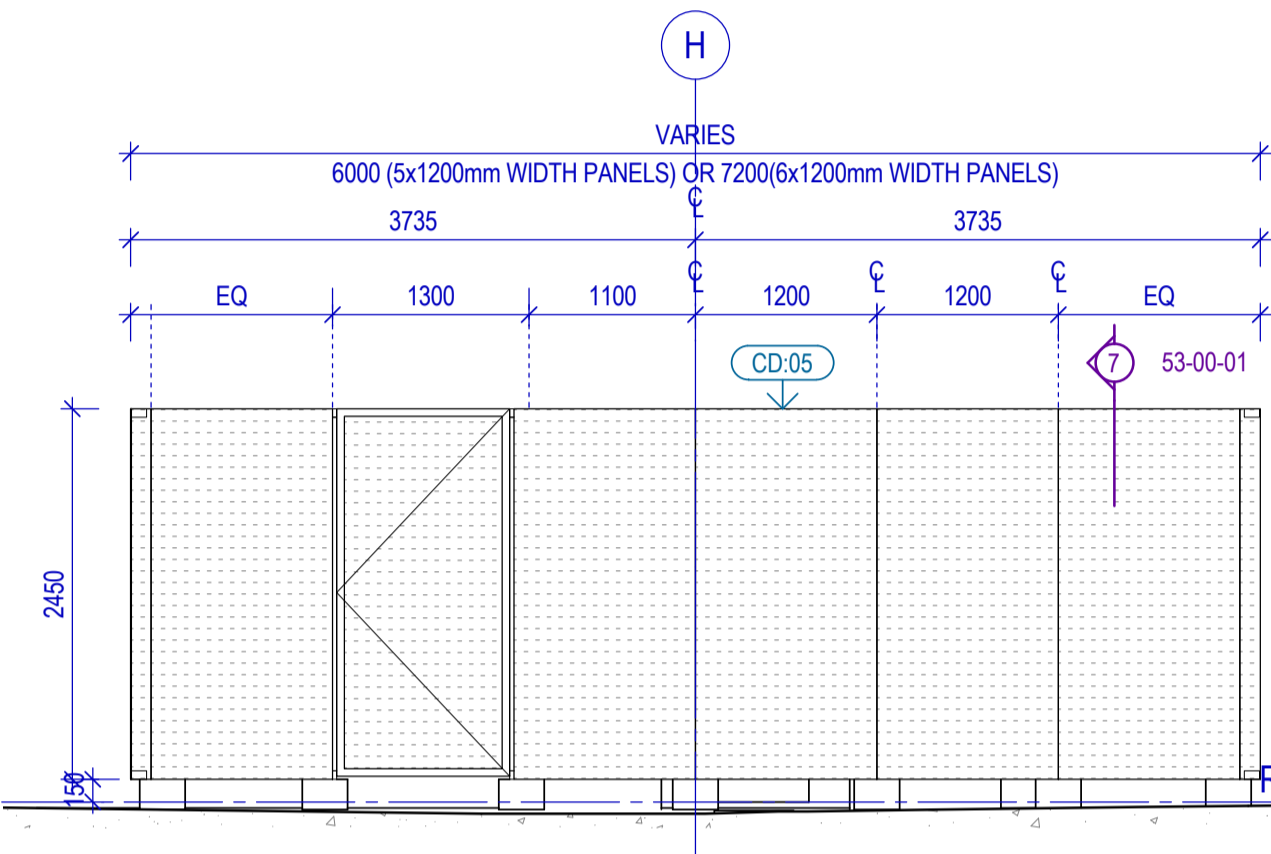
1 ROOF PLANT - FLOOR PLAN
 SCALE 1 : 50



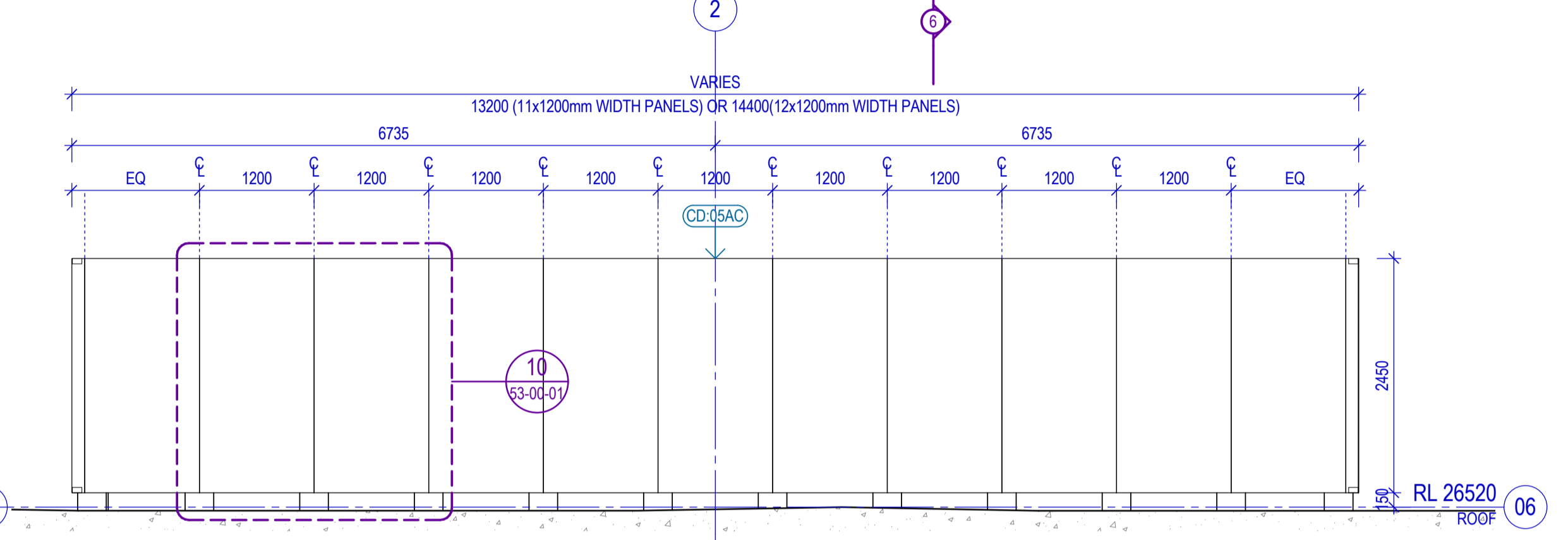
2 ROOF PLANT - ELEVATION 2
 SCALE 1 : 50



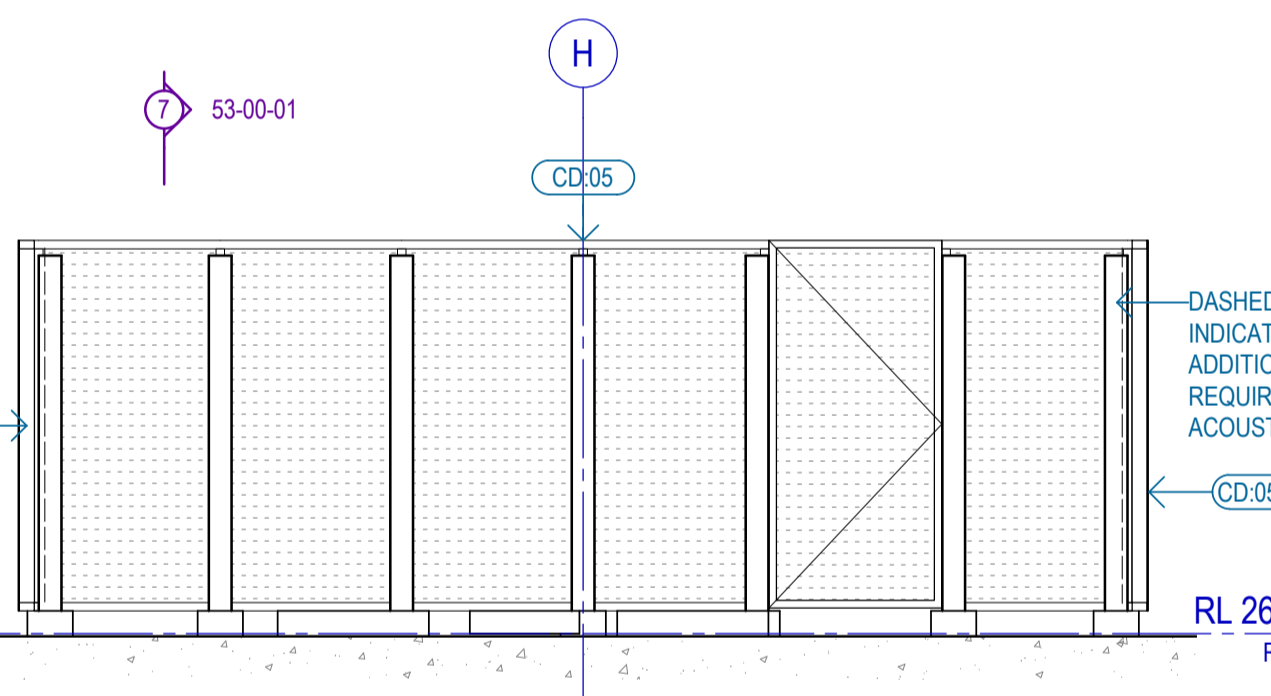
3 ROOF PLANT - ELEVATION 3
 SCALE 1 : 50



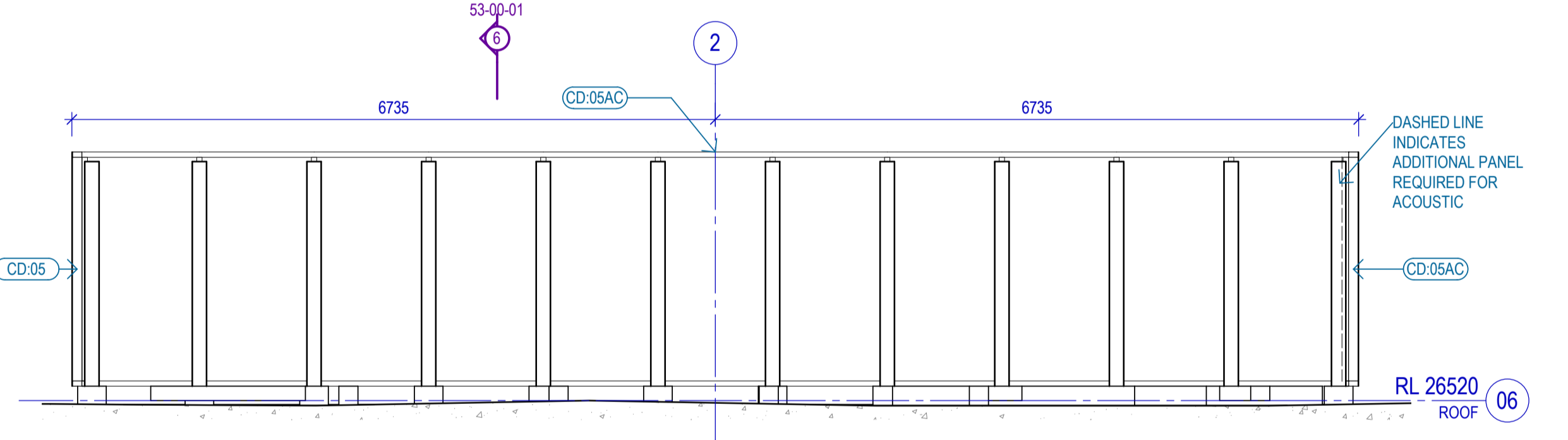
4 ROOF PLANT - ELEVATION 4
 SCALE 1 : 50



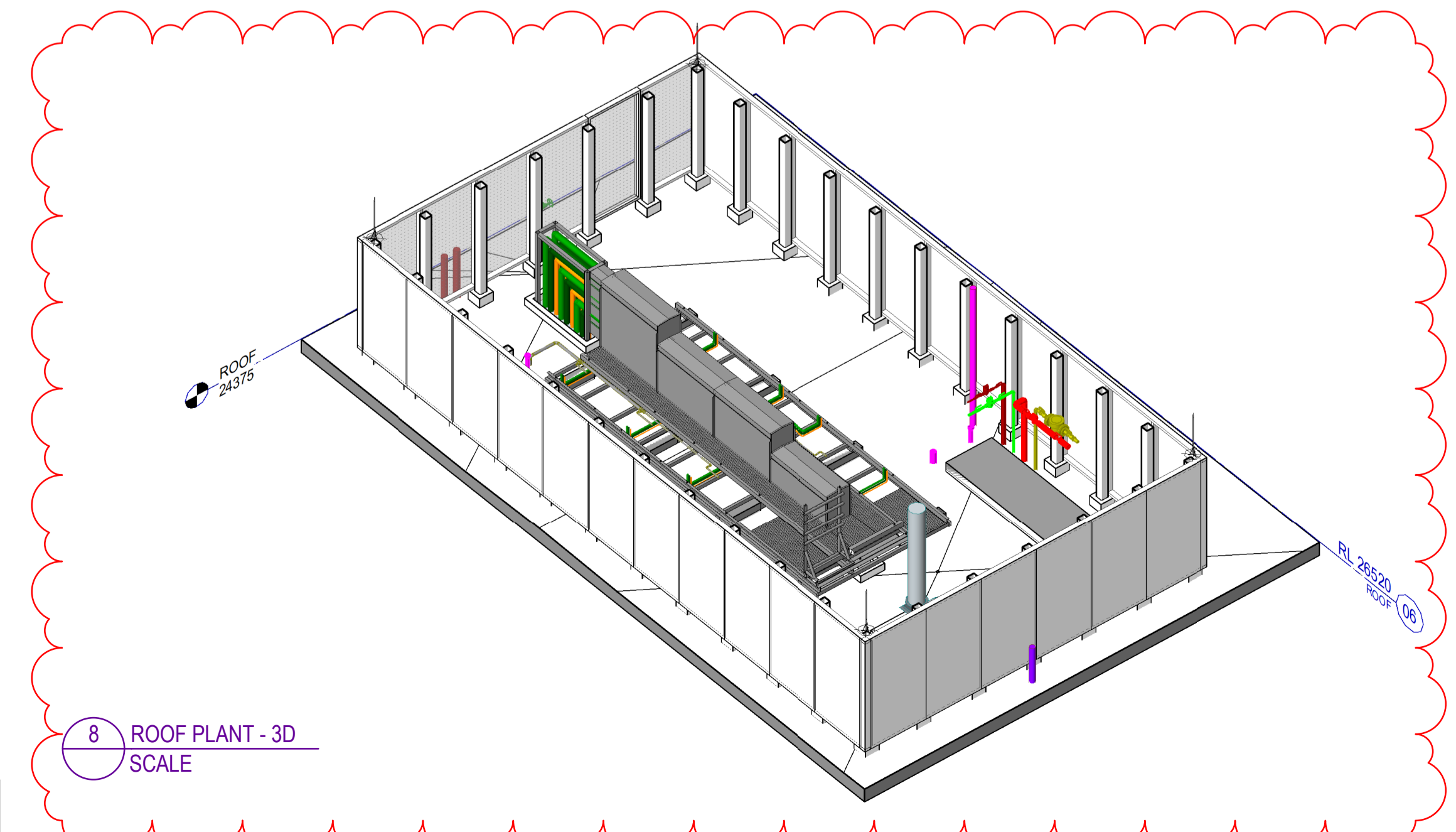
5 ROOF PLANT - ELEVATION 5
 SCALE 1 : 50



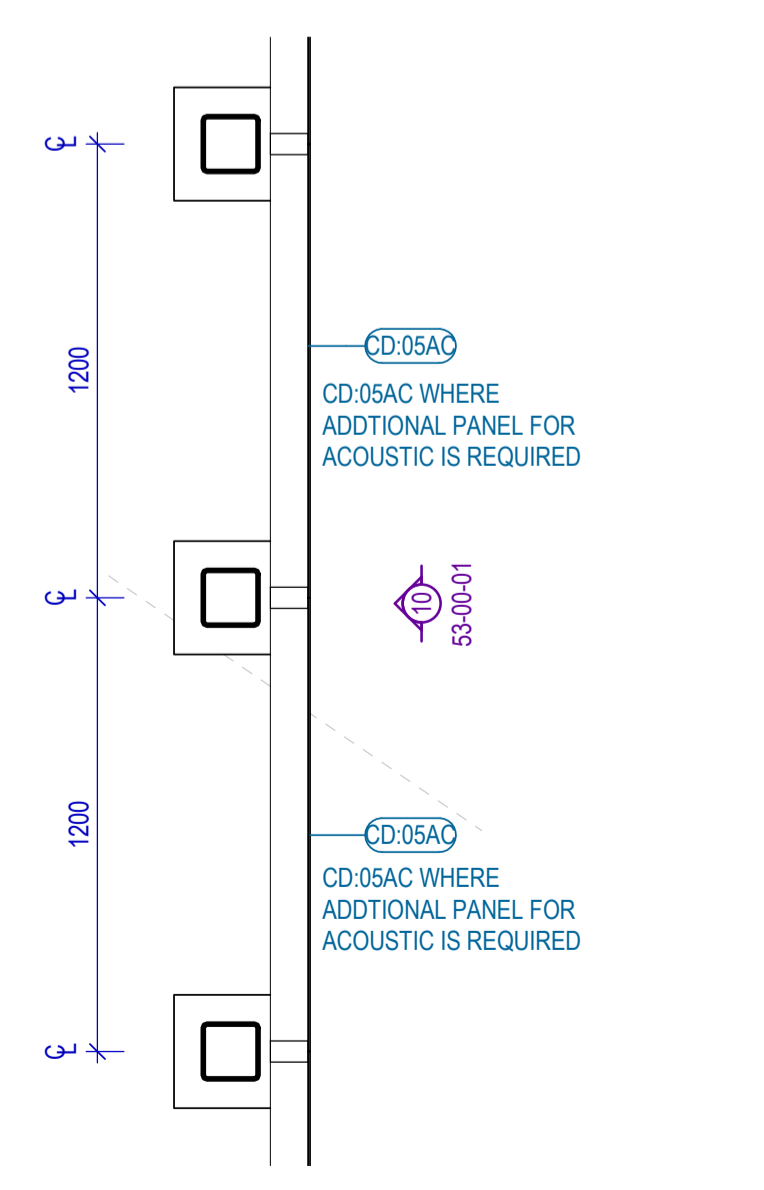
6 ROOF PLANT - SECTION 1
 SCALE 1 : 50



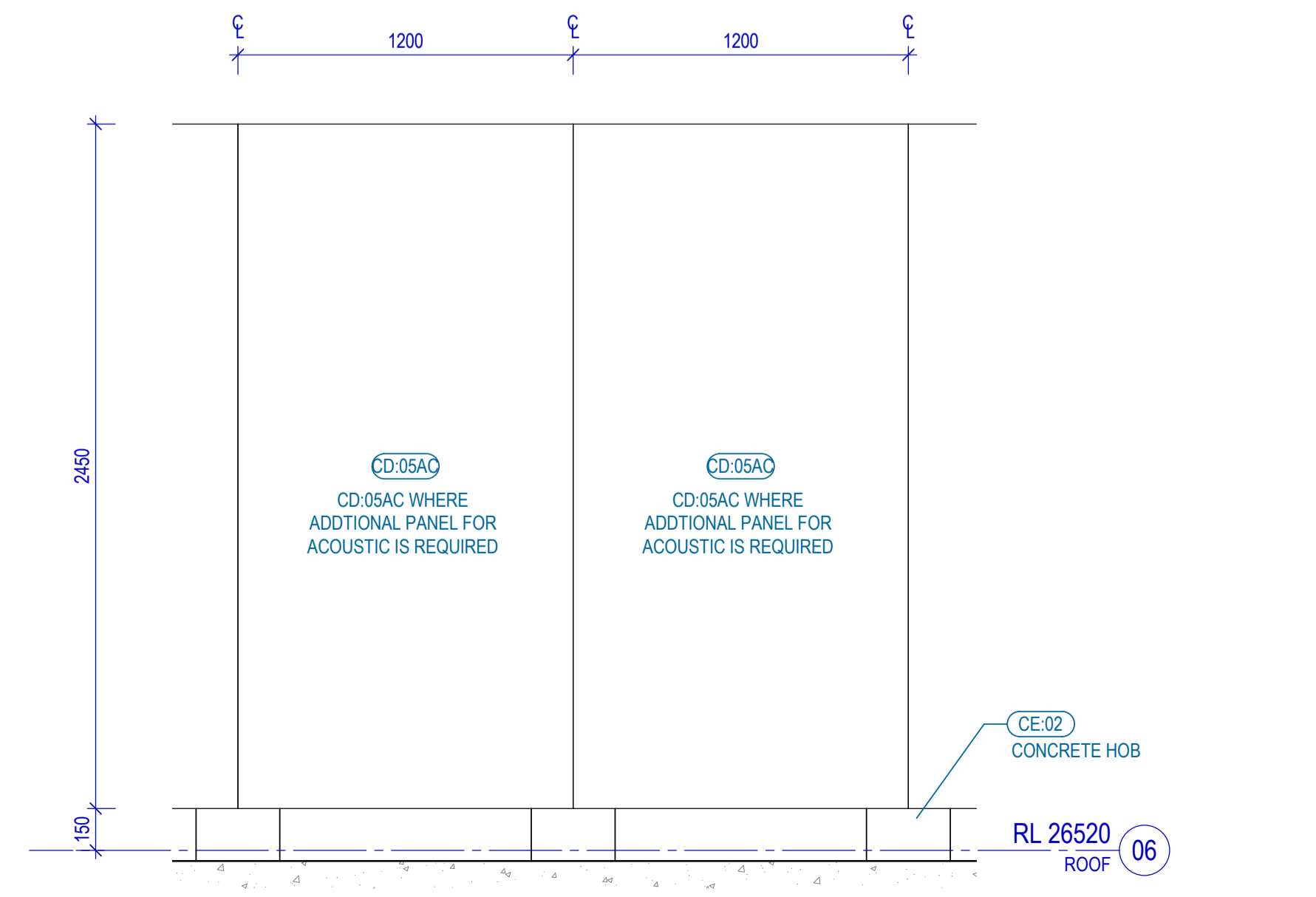
7 ROOF PLANT - SECTION



8 ROOF PLANT - 3D
 SCALE



9 CD05 ROOF PLANT SCREEN TYPICAL PLAN



10 CD05 ROOF PLANT SCREEN TYPICAL ELEVATION
 SCALE 1 : 20

Project
 SYDNEY OLYMPIC PARK HIGH SCHOOL

Client
 roberts CO

Issuer
 W-B WOODS BAGOT

Project number 121566
 Checked MH Approved CS
 Size check 25mm
 Sheet size A1 Scale As indicated

Sheet title
 DETAIL BUILDING ROOF PLANT - ENCLOSURE DETAILS

Sheet number SOPHS-WB-AR-53-00-01
 Status FOR CONSTRUCTION
 Revision C



Schedule

CD

Cladding

Project Number Project Name

121566 SOPHS

WOODS BAGOT ©

Document Number

A-SchedCD

Revision	Checked	Approved	Date Revised	Status
H	JN	CS	18 May 2023	For Construction

Fixing	Exposed fixings to be grade 316 architectural hex head low-profile socket or countersunk with maximum spacing between fixings. Refer to Façade Consultant's documents.
Requirements:	Exterior shading fins formed with expanded steel mesh and internal extruded aluminium post bracketed back to mullion to CU:01 The cladding contractor is to shop detail the system and the panel layout giving regard to the design intent shown on the drawings.
Shop drawings	Shop drawings, and shop drawing review, are an essential part of the delivery and production processes. Submit shop drawings for review prior to commencing this work

CD:04 Rain-Screen Panel System – External CU:03 (Gymnasium)

Requirements:	300mm wide x 50mm deep 'U Profile' Corten panels that stagger in height – refer to elevations. Allow for gaps as shown on elevation to create pattern.
Support:	Vertical profile bracket fixed back to bridging plate as shown on detail. Note: CD:12 behind – refer to detail. Bridging plate fixed to CD:12 CD:12 fixed to girts Additional note: south elevation requires outriggers due to CD:04 distance from CD:12 Complete with all fixings, brackets, cleats etc. to complete the installation.
Panel:	Material: Corten Dimensions: 300mm wide – height varies refer to drawings. Thickness: 3mm Thick
Panel Finish:	Corten to be pre weathered and sealed before installation
Joint:	Refer to detail.
Prototype:	Required for review and coordination.
Shop drawings	Shop drawings, and shop drawing review, are an essential part of the delivery and production processes. Submit shop drawings for review prior to commencing this work.

CD:05 Metal Cladding – Roof Plant

Product:	Metal - Flat Sheet
Type/Size:	5mm opening, 2.5mm spacing
Panel:	1200mm standard module C/L to C/L Corner as dimensioned Refer to Architectural Drawings for setout Refer to Façade Consultant's details
Colour:	Dulux Natural Silver Kinetic RAL-2004 Pure Orange.
Finish:	Powdercoat
Fixing	Exposed fixings to be grade 316 architectural hex head low-profile socket or countersunk with maximum spacing between fixings. Refer to Façade Consultant's documents
Requirements:	The cladding contractor is to shop detail the system and the panel layout giving regard to the design intent shown on the drawings.

Dulux Natural Silver Kinetic

