

# Wentworth Point new high school

Works notification | 4 July 2023

## Temporary impacts on Burroway Road

The next stage of works to deliver Wentworth Point new high school involves some investigative potholing works ahead of upcoming Sydney Water infrastructure works.

These works are expected to take place during usual construction hours, Monday to Friday between 7 am and 6pm from Monday 10 July 2023 within the school holiday period to minimise disruption to the community. If there is any inclement weather the work will be finished the following week.

The work will include temporary impacts over three to five days to a section of Burroway Road. This includes changes to pedestrian access, the temporary loss of a maximum of six parking spaces, and partial road lane closures. Please be assured that access to Burroway Road and Wentworth Place will remain open at all times.

During construction hours there will also be changes to the regular use of the roundabout. To provide continuous vehicle access, work will occur in stages, starting at the roundabout on Burroway Road and finishing alongside the new high school site. At times, vehicles will be unable to make U-turns from some directions. Please refer to the maps over the page showing how the road lanes will be temporarily changed during construction hours.

Across the work area, traffic management will be in place to divert traffic safely around the road closures and existing pedestrian closures. This includes dedicated traffic controllers during work hours, signage and barriers around the work.

There may be some additional noise created during this work, but live noise monitoring equipment will be in place to ensure works are within the allowable noise range.

## Upcoming Sydney Water works

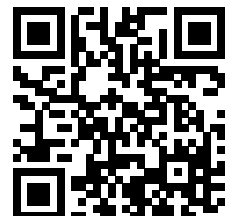
In coming months, we will start work on the critical water, waste water and stormwater infrastructure for the future high school. It is expected these works will take between 6-12 weeks and will impact some parking and road access on Burroway Road and Wentworth Place. Further details of the anticipated impacts will be provided in coming weeks. All efforts will be made to ensure minimal disruption to the community and be completed as soon as possible.

## Staying informed

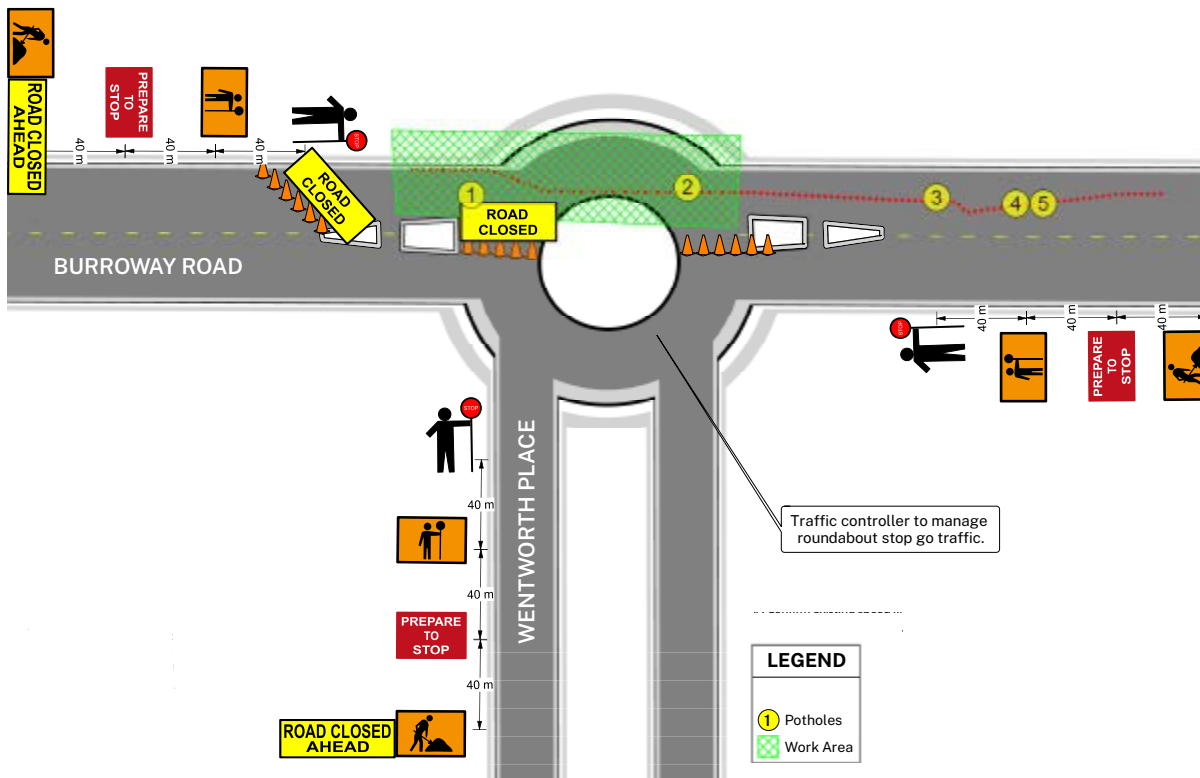
School Infrastructure NSW will continue to share updates as the project progresses.

Visit the project website at [edu.nsw.link/WPNHS](https://edu.nsw.link/WPNHS) or scan the QR code for all the project details, project updates and documentation or register via the form on the 'Get involved' tab to have project updates and notifications like this emailed to you.

Thank you for your patience while we deliver this important new school infrastructure.



**Stage 1: The roundabout will temporarily become a T-intersection and cannot be used for U-turns during construction hours:**



**Stage 2: The roundabout will operate as usual, reduced to one lane:**

