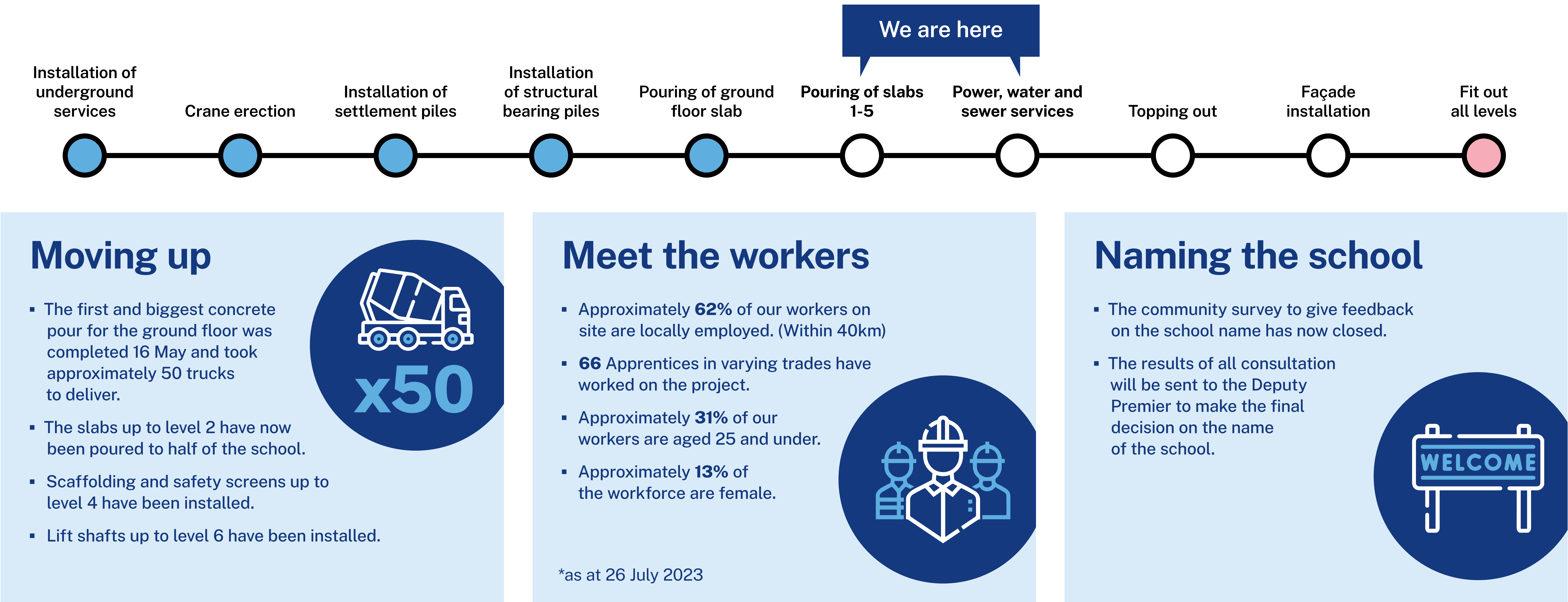


High school construction in progress

Coming up for the rest of 2023 in the construction of Wentworth Point new high school.



Designed around teaching and learning

The design for the new school includes a six-storey building with two wings, and a hall building for fitness, movement and performance.

The layout of the school building creates a central courtyard for students that is physically separated and protected from the surrounding streets.

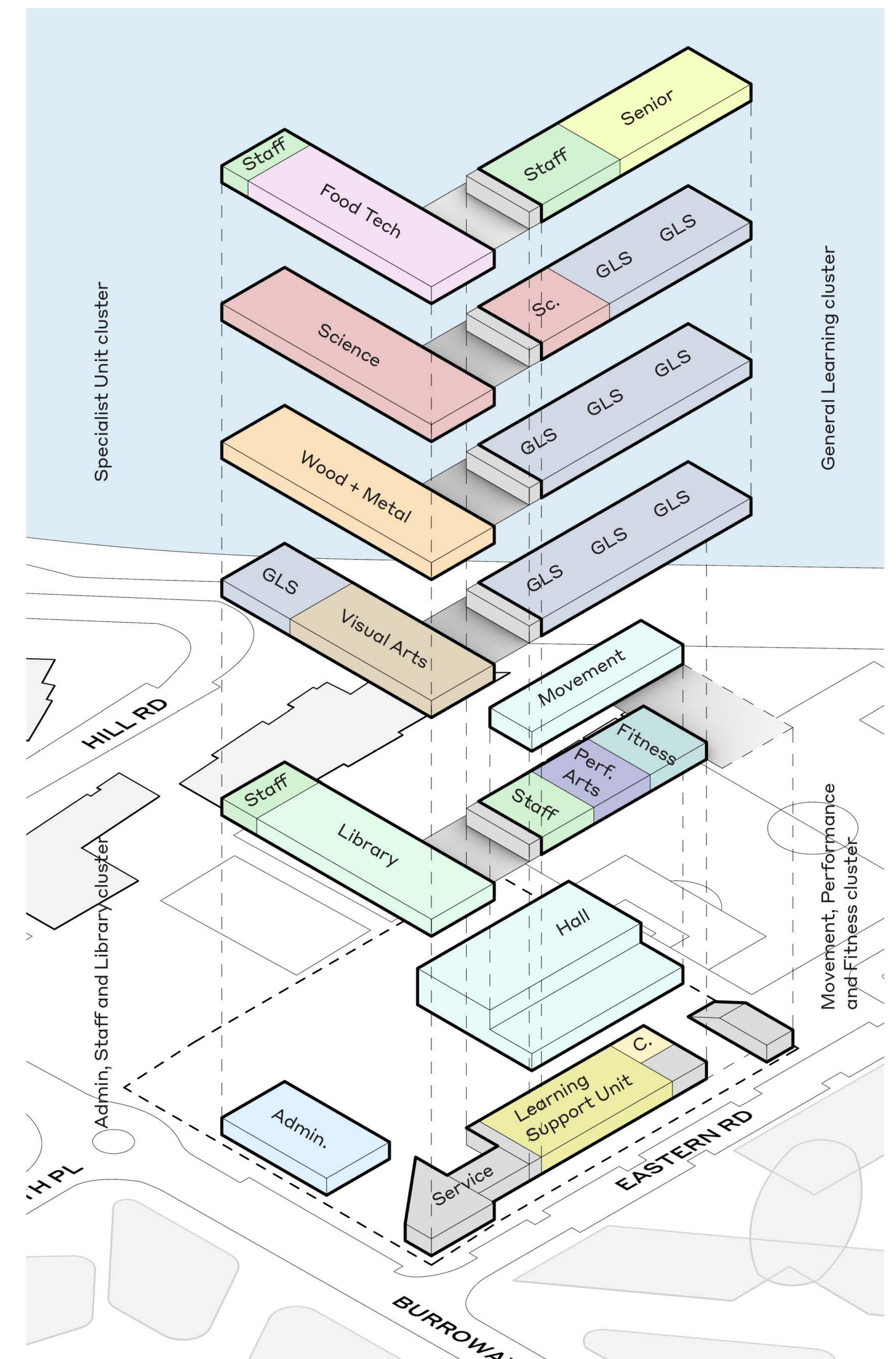
The school is arranged by learning units that are focused on discipline-based learning neighbourhoods that group subjects like science or visual arts. These are grouped in clusters across the two wings, with specialist learning spaces in one wing, and general learning spaces in the other.

General learning spaces are located over three floors, making it easier for staff and students to travel between classes and allowing the creation of faculty departments. Learning common areas are spread throughout the building, encouraging collaboration and allowing flexible use by year group or curriculum.

The top floor is used for seniors and staff areas, offering space away from the activities of the main school.

Administration, library, performance and fitness facilities are on the ground floor and level 1 to allow for easy connection with the community and potential use of some facilities by community outside of school hours.

The support learning unit is on the ground floor and provides direct access to the play space.



Wentworth Point new high school

For more information phone: 1300 482 651
Email: schoolinfrastructure@det.nsw.edu.au
schoolinfrastructure.nsw.gov.au

The new high school features

The school has been designed as six storeys to maximise outdoor spaces and grouped into zones that focus on curriculum or school stage.



Wentworth Point new high school

For more information phone: 1300 482 651
Email: schoolinfrastructure@det.nsw.edu.au
schoolinfrastructure.nsw.gov.au



Artist impression of the view from the outdoor multipurpose sports courts, towards Eastern wing of the school building



Artist impression of general learning spaces



Artist impression of new high school's main entrance on Burroway Road



Artist impression of new high school, from Burroway Road

Wentworth Point new high school

For more information phone: 1300 482 651
Email: schoolinfrastructure@det.nsw.edu.au
schoolinfrastructure.nsw.gov.au

