

Wentworth Point new high school

Works notification

18 November 2022

A project is underway to build a new high school at 7 Burroway Road, Wentworth Point.

Temporary access changes to Wentworth Place and Burroway Road roundabout 24 November to 8 December 2022

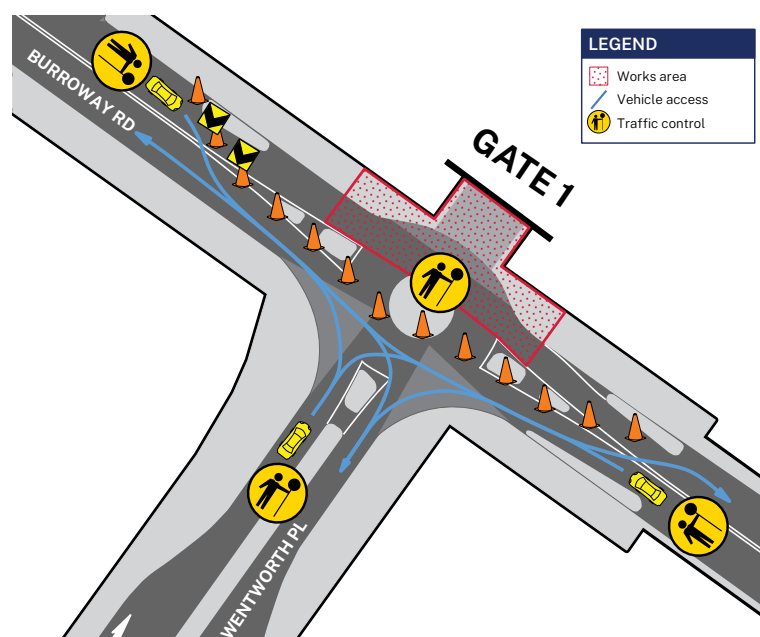
Construction of a main gate driveway for access to the construction site is required as part of site establishment works. During this construction, there will be temporary changes to the way vehicles and pedestrians use a portion of Burroway Road (refer image below).

- Starting Thursday 24 November, between the hours of 7 am to 6 pm only the eastern lane of Burroway Road (alongside the school site) will be closed to the public and not functioning as a roundabout.
- The roundabout will function as usual, outside of the above hours and on the weekend.
- The pedestrian footpath in front of Gate 1 will be closed for the duration of the works including after hours and on the weekend.
- Traffic controllers will be in place during working hours to direct vehicles through the intersection.
- Pedestrians will be directed by traffic control and signage to use an alternate route.
- During construction hours, vehicles approaching from a westerly direction (heading away from Hill Road), will be unable to make a U-turn at the roundabout and will be required to turn right into Wentworth Place, or turn around at the cul-de-sac on Burroway road.
- During construction hours, vehicles approaching from Wentworth Place will be unable to make a U-turn, and will be required to turn right, turn around at the cul-de-sac on Burroway road and make a left hand turn back in to Wentworth Place. To avoid this, vehicles should approach the roundabout from Burroway Road.
- For the safety of students, the local community and workers, road users are advised to obey directions.

The temporary changes are required to facilitate the crossover entry. We will provide further notification if the work and lane closure need to be rescheduled.

Work hours

Traffic control set up will start from 6:30 am on Thursday 24 November 2022, and construction will take place from 7 am to 6 pm.



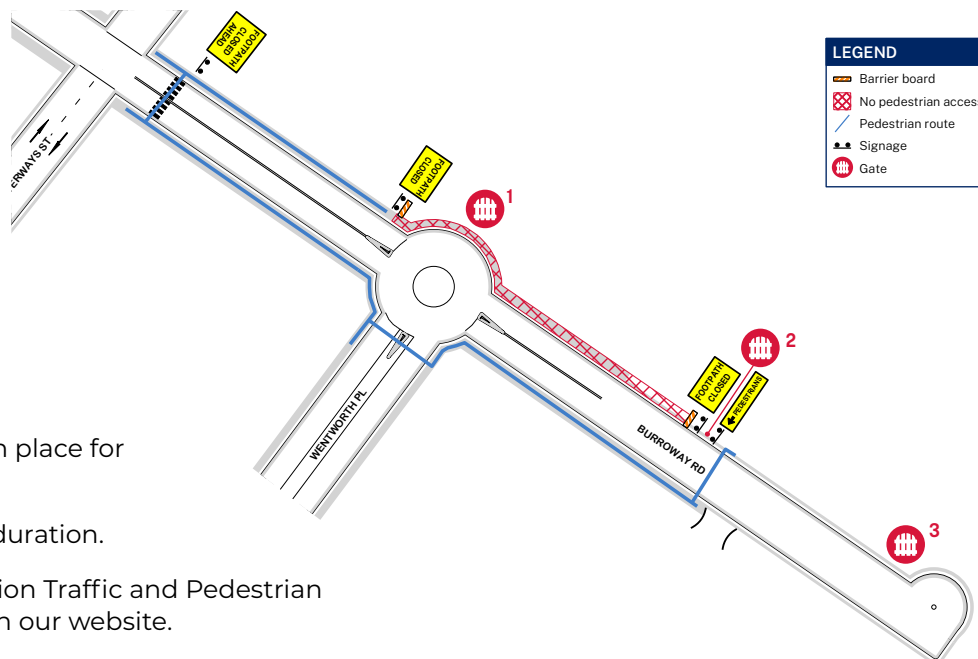
For more information contact:

School Infrastructure NSW
Email: schoolinfrastructure@det.nsw.edu.au
Phone: 1300 482 651
www.schoolinfrastructure.nsw.gov.au

Changes to pedestrian access 30 November 2022 to 28 March 2023

Following site establishment, the next steps in construction involve bulk earthworks and construction of a retaining wall. In order to facilitate this, pedestrian access will be affected for approximately four months.

- Starting Wednesday 30 November, the footpath will be closed on a portion of Burroway road from the roundabout to our Gate 2 Entry.
- Pedestrians will be required to use the alternate route outlined in the image.
- Fencing will be in place around the section of closed footpath.
- Standard traffic control will be in place for deliveries.
- Signage will be in place for the duration.



All this is in line with our Construction Traffic and Pedestrian Management Sub-Plan available on our website.

After hours delivery of pile rig scheduled between 7 to 9 December 2022

A pile rig is required on site to drill holes for inserting the structural columns for the building. It is required to be delivered to site after hours to meet Transport for NSW requirements as it is an oversize delivery.

- The rig is expected to be delivered on site from 3 am on either the 7th, 8th or 9th December dependent on weather.
- The rig will be delivered on a semi-trailer travelling via Hill Road and Burroway Road to the construction site.
- Some noise may be created during the delivery, but all precautions to minimise noise will be taken, including avoiding reversing where possible.

Standard working hours

Standard project working hours are 7 am to 6 pm, Monday to Friday. No work will take place on weekends or public holidays without prior notice.

We appreciate these works are a temporary disruption to the community, and thank you for your patience while we deliver this important school infrastructure.

Staying informed

School Infrastructure NSW will continue to share updates as the project progresses. Visit the project website at edu.nsw.link/WPNHS for all the project details, project updates and documentation or register via the form on the 'Get involved' tab to have project updates and notifications like this emailed to you.



For a **Translation and Interpreting Service**, call **131 450** and ask them to call the Department of Education - School Infrastructure NSW on **1300 482 651**.



如果需要翻译和口译服务, 请打电话 **131 450**, 请他们打电话 **1300 482 651** 给新州教育部学校基础设施处。

For more information contact:

School Infrastructure NSW
Email: schoolinfrastructure@det.nsw.edu.au
Phone: 1300 482 651
www.schoolinfrastructure.nsw.gov.au