

Wee Waa High School redevelopment

Information pack | November 2021



Artist impression of Wee Waa High School

The NSW Government is investing \$7.9 billion over the next four years to deliver 215 new and upgraded schools to support communities across NSW. This is the largest investment in public education infrastructure in the history of NSW.

The NSW Department of Education is committed to delivering new and upgraded schools for communities across NSW. The delivery of these important projects is essential to the future learning needs of our students and supports growth in the local economy.

We are in the process of designing a redevelopment of Wee Waa High School to provide upgraded facilities for the school community. The project will deliver:



New learning spaces



Modern core facilities including a library and multipurpose hall



New agricultural and environment centre



Sports fields and sports courts



New Indigenous cultural centre

Progress summary

Concept design is completed

The concept design phase is now complete and provides a high-level vision for the site. The design will continue to progress through future design phases, in consultation with stakeholders.

The project team will continue to seek input from the Project Reference Group, school operations and key community stakeholders.

Statutory planning process

The Wee Waa High School Redevelopment is considered a State Significant Development (SSD) and therefore the NSW Department of Planning, Industry and Environment (DPIE) will assess the application for the project.

The project's SSD application has been lodged and is currently on exhibition for formal feedback. You can find detailed information about the SSD application by visiting the DPIE's website. If you would like to provide feedback on the concept design, you can make a formal submission during the exhibition period of 28 days by following the 'Make a Submission' link.

Feedback on the SSD application should be directed to DPIE via their website:

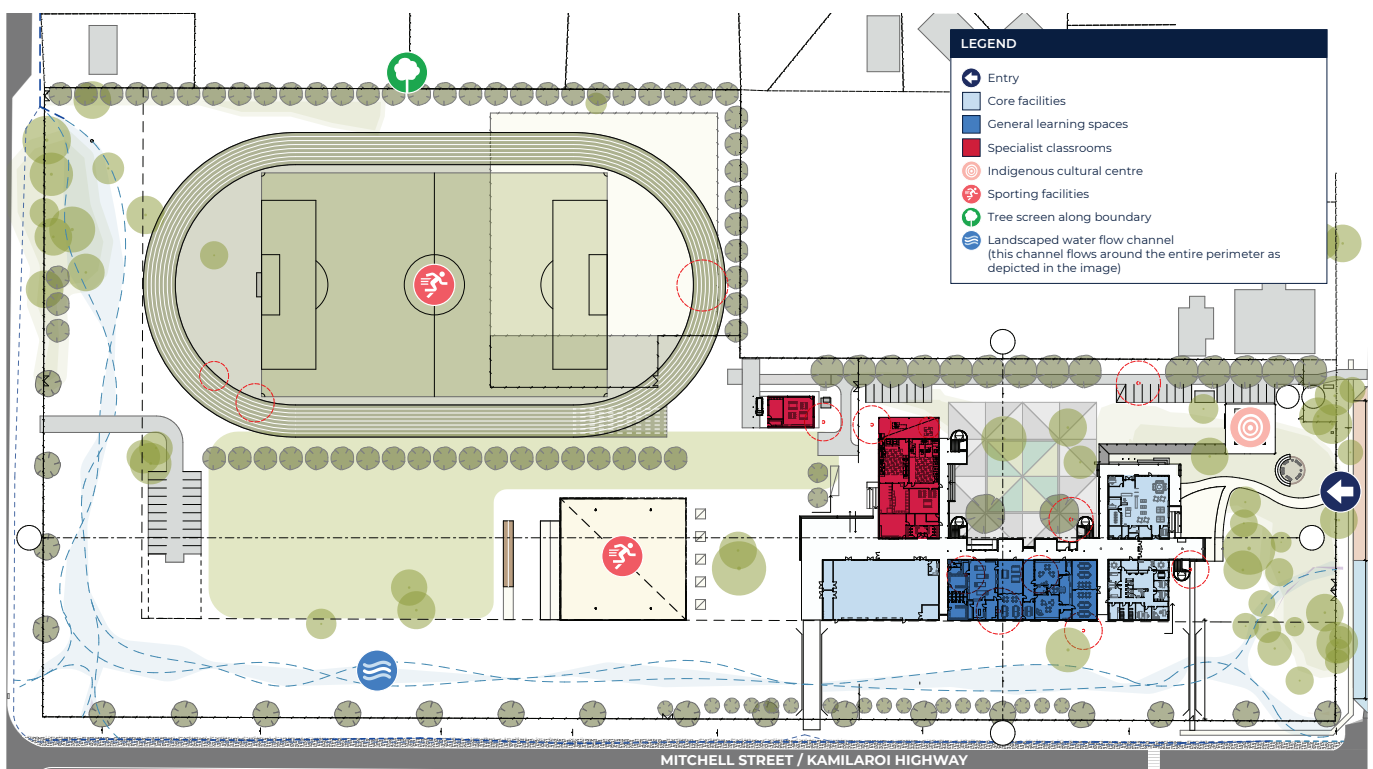
www.planningportal.nsw.gov.au/major-projects/project/42061

The site

The site on Mitchell Street adjacent to Wee Waa Public School has been identified as the preferred site. This location will enhance learning opportunities for Wee Waa's primary and secondary students, build on the strong bond shared by both schools and provide an opportunity for the broader community to benefit from modern facilities.

We have commissioned a range of technical experts to inform the design and flood risk mitigation plans, this includes a landscaped stormwater flow channel along the southern and western boundaries of the site with draining systems to guide water from northern and eastern boundaries.

Digital modelling of the solution in relation to significant rain events has shown that surrounding properties will also benefit from this approach.



The design

The design identifies all the spaces and facilities that the school and campus need, based on the anticipated number of students, educational and operational requirements, and NSW Department of Education guidelines.

The concept design shows:

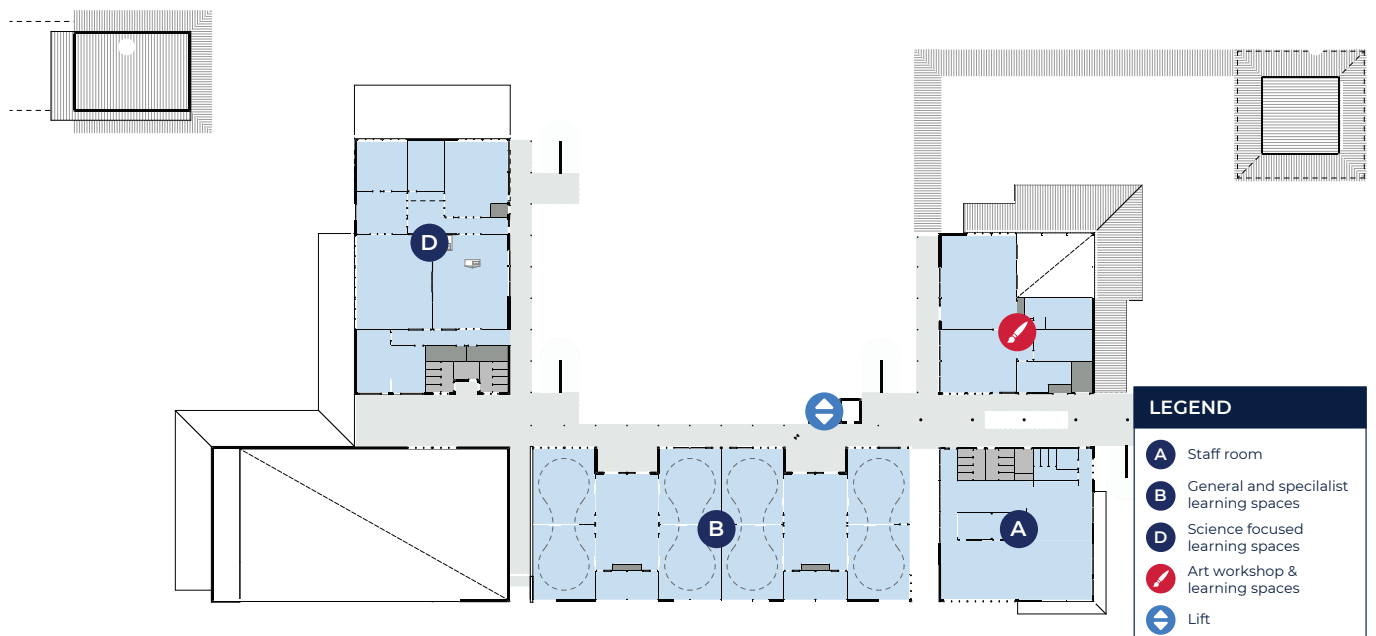
- the proposed location, size and intended use of new buildings
- the proposed design, size and intended use for sports fields and recreational areas
- the proposed landscaping plan for the school site.

Environmental factors such as air quality, ventilation, natural lighting, accessibility, thermal comfort and acoustic performance have been considered. The concept design addresses these factors by embedding elements such as the north facing courtyard, shading areas, indoor and outdoor learning spaces and cross ventilation channels throughout the school.

Ground floor



First floor



The Agricultural Learning Centre

The Agricultural Learning Facilities Centre will be developed on the site of the existing agricultural plot on Purcell Avenue and form the basis of a separate planning process. Upgrading the existing agricultural plot will provide an opportunity to expand on the existing agricultural infrastructure and facilities.

An Environment Centre learning facility will sit alongside other specialist learning spaces at the Mitchell Street site to support theory-based learning and a STEM agricultural program.

A Review of Environmental Factors (REF) will be done as part of the planning process for the upgraded agricultural facilities. We will inform the community on its progress as soon as further information is available.

Frequently asked questions

What is a State Significant Development application?

State Significant Development (SSD) applications are used for projects that have special significance to the people and State of NSW. The Department of Planning, Industry and Environment (DPIE) is responsible for the planning approval process for SSD applications, rather than local council

What is a Review of Environmental Factors?

In 2017 the NSW Government introduced a new education-based State Environmental Planning Policy (SEPP) that aims to make it easier to provide new and upgraded education facilities for communities. Under the SEPP some development works can be carried out without development consent from council.

For the Wee Waa High School Redevelopment, the allowable works include construction of the upgraded agricultural facilities as well as some flood mitigation works to prepare the site for construction. Before commencing the works, we need to undertake a Review of Environmental Factors (REF) to determine whether there will be any potential impacts on the environment. As part of the REF process, a letter will be issued to neighbouring residents and stakeholders, providing them with details of the proposed work and contact details for feedback or further information.

What is the approach being used to build the school?

For this project, we will be combining the manufacture of building components, such as wall systems and facades, in a safe, clean and efficient factory environment off-site with onsite assembly. The parts will be transported to the school site and then assembled into place. This approach has the potential to deliver significant safety and sustainability outcomes and drive productivity and quality efficiencies that can benefit Government, industry and communities.

How will the project be sustainable?

We acknowledge the important part that sustainability has in the construction and lifecycle of new schools and facilities. We will be targeting 4 Star Green Star accreditation for this project which is a Green Building Council of Australia certification that rates how sustainable a facility is.

Timeline

Early works are likely to begin in early 2022, with construction anticipated to begin soon after, pending planning approvals. It is expected that the project will be complete in late 2022, subject to weather and planning approvals.

Get involved

You can find detailed information about the SSD application by going to the DPIE's website, if you would like to provide feedback on the concept design, you can make a formal submission during the exhibition period of 28 days by following the 'Make a Submission' link. Feedback on the SSD application should be directed to DPIE via their website: www.planningportal.nsw.gov.au/major-projects/project/42061

Contact us

For more information contact:

School Infrastructure NSW

Email: schoolinfrastructure@det.nsw.edu.au

Phone: 1300 482 651

www.schoolinfrastructure.nsw.gov.au