



Artist impression of Wee Waa High School. Indicative only.

Wee Waa High School

Project update

July 2021

Investing in our schools

The NSW Government is investing \$7.9 billion over the next four years, continuing its program to deliver 215 new and upgraded schools to support communities across NSW. This is the largest investment in public education infrastructure in the history of NSW.

The NSW Department of Education is committed to delivering new and upgraded schools for communities across NSW. The delivery of these important projects is essential to the future learning needs of our students and supports growth in the local economy.

Project overview

A project is underway to redevelop Wee Waa High School. The project will deliver;

- New learning spaces
- Modern core facilities including a library and multipurpose hall
- New agricultural and environment centre
- Sports fields and sports courts
- New Aboriginal learning centre.

Progress summary

Comprehensive assessments of the preferred site on Mitchell Street are now complete and we are working with the Project Reference Group (PRG) to finalise the concept design for the new high school.

The Department of Planning, Industry and Environment (DPIE) have provided us with the Secretary's Environmental Assessment Requirements (SEARs) for the project. The SEARs will guide our work as we lodge a State Significant Development (SSD) application. Once the application is lodged, it will be published for community feedback.

We have released the tender for Early Contractor Involvement (ECI) and expect to award this in early September. Once awarded, the builders will work closely with the school leadership, project team and the PRG to further develop the design.

For more information contact:

School Infrastructure NSW
Email: schoolinfrastructure@det.nsw.edu.au
Phone: 1300 482 651
www.schoolinfrastructure.nsw.gov.au



Next steps

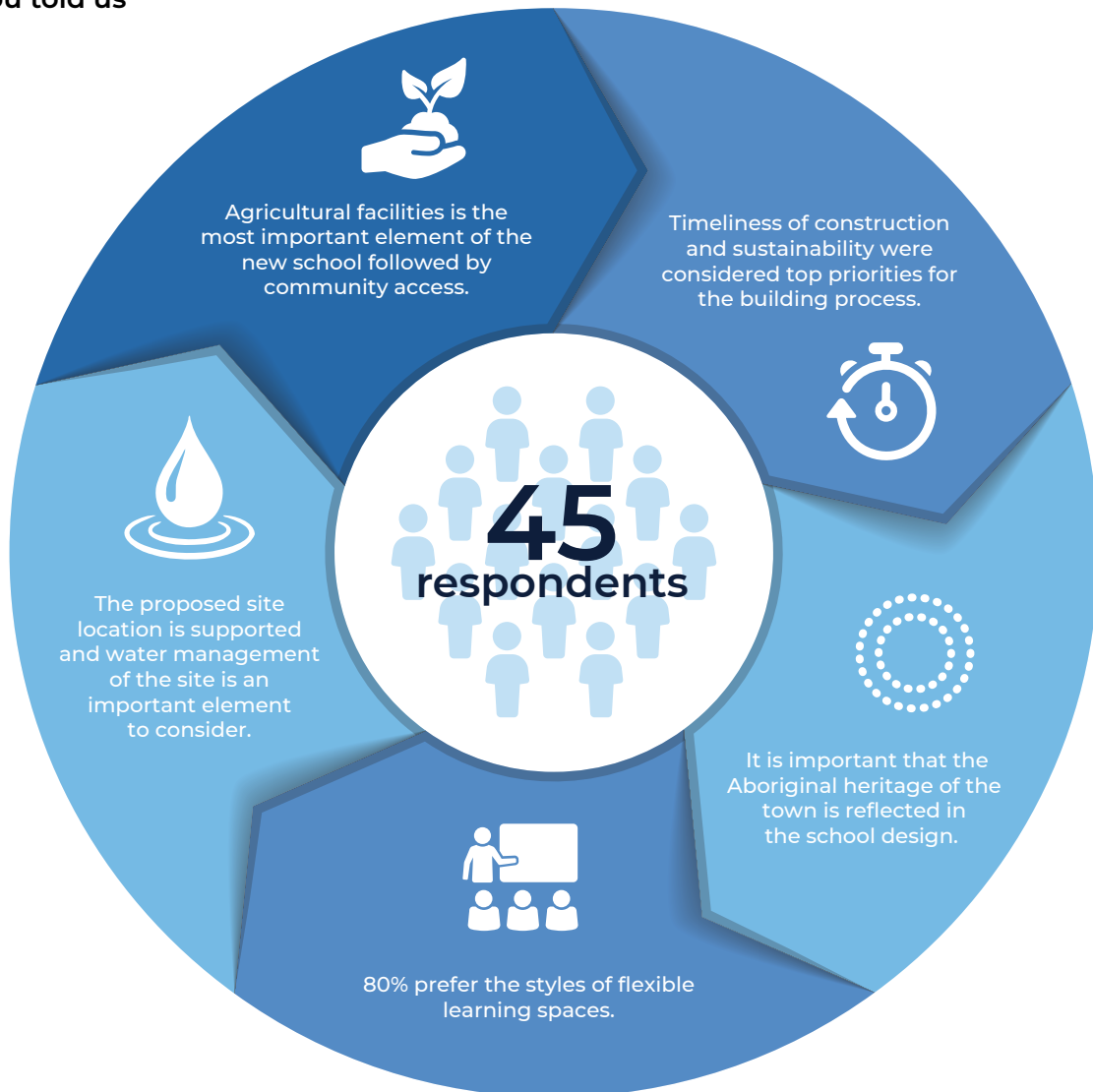
- Assess ECI tender applications and award contract
- Prepare State Significant Development (SSD) application
- Finalise concept design.

Consultation and Engagement

Due to recent travel restrictions in Sydney metro and surrounding areas, the community information session scheduled for 23 June could not be held. We will be rescheduling the information session as soon as restrictions ease to provide the community an opportunity to meet with the project team and discuss the project scope and benefits.

Information about the project is available to view and download on the Wee Waa High School project webpage, which received more than 300 new visitors during the two weeks after the project was announced. An online survey was open from 23 June to 15 July and 45 responses were received from the community. Thank you to everyone who visited our webpage and completed the survey. Your feedback is being considered as the design progresses.

What you told us



For more information contact:

School Infrastructure NSW
Email: schoolinfrastructure@det.nsw.edu.au
Phone: 1300 482 651
www.schoolinfrastructure.nsw.gov.au

Agriculture

You told us that a fit for purpose agricultural facility is the most important element to you for the new high school.

The project team will be working with the high school's leadership, industry experts, design and building specialists to deliver the new agriculture and environment learning centre. The new facilities will be designed to support a modern STEM agricultural program. STEM programs integrate elements from science, technology, engineering and mathematics and will focus on modern agriculture practices. More information about our STEM programs can be found here:

<https://education.nsw.gov.au/teaching-and-learning/curriculum/key-learning-areas/stem>

Community access

Sharing new facilities with the wider community was identified to be the second most important element of the new school to you. You told us that Wee Waa is a close-knit connected community and a new high school would be a highly valued community asset. We will consult the PRG, community groups and Narrabri Shire council to build a school that makes it easier for the community to benefit from its features such as the sports playing fields.

Sustainability and site location

You told us that long term sustainability is a key factor for the new school and that the community supports overwhelmingly the proposed site location. You were also interested in knowing how the water flow from the new school will be managed and how this may impact the surrounding properties.

We are working with sustainability experts as we progress the design process. This is to ensure that appropriate ventilation, accessibility, biological and ecological diversity as well as water and energy conservation are key elements of the new school.

We will continue to work with a range of experts to inform our approach on managing waterflow at the preferred site, including harnessing water for usage in the new agricultural facilities. We are also working with Narrabri Shire Council town planners to ensure that our design complements the town's existing stormwater infrastructure.

We will share a more detailed plan and seek your feedback in regards to site selection as part of the SSD application process.

Local Aboriginal representation

You told us that the traditional heritage of the town is important and that it should be reflected throughout the new school design.

We will continue to seek guidance from local Aboriginal community members including the local Aboriginal Education Consultative Group (AECG) and the Wee Waa Aboriginal Land Council throughout the project lifecycle. This will guide us as we work to deliver a fit for location school that supports a culturally inclusive learning environment and education opportunities for all students.

Learning spaces

You told us that you prefer the styles of flexible learning spaces.

Effective learning environments feature space, furniture and technology that support greater collaboration and improved learning outcomes. The new high school will be designed with students at the centre, making learning spaces suitable for individual needs and interests.

For more information contact:

School Infrastructure NSW
Email: schoolinfrastructure@det.nsw.edu.au
Phone: 1300 482 651
www.schoolinfrastructure.nsw.gov.au

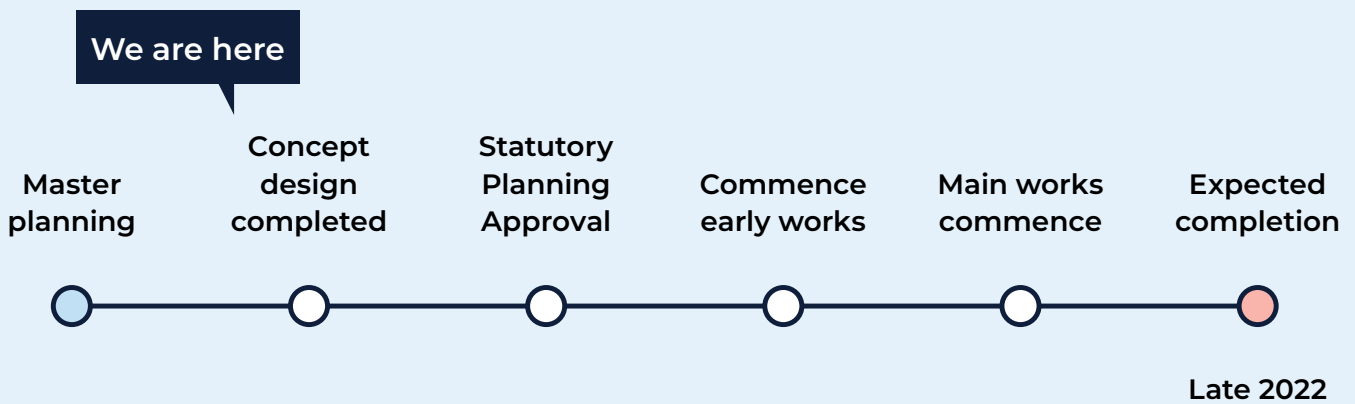
Timeline

You identified that the most important factor for construction was the timeline. Given the temporary co-location of Wee Waa High School at Wee Waa Public School, delivering the new school as quickly as possible is a priority for the project team.

We have been working to fast track the planning processes and will continue this approach throughout delivery of the project. The project is expected to be completed in late 2022, subject to planning approvals, site conditions and weather permitting.

The community will be updated throughout the project and our website will be updated to reflect any works occurring.

Indicative timeline



For more information contact:

School Infrastructure NSW
Email: schoolinfrastructure@det.nsw.edu.au
Phone: 1300 482 651
www.schoolinfrastructure.nsw.gov.au

