



Artist impression of Wee Waa High School

Wee Waa High School redevelopment

Information pack | December 2023

As part of the NSW Government's plan to rebuild essential services, the 2023-24 Budget is delivering a historic \$1.4 billion for new and upgraded schools in regional NSW. This targeted investment in growing communities will ensure working families get access to a world class public education.

The redevelopment of Wee Waa High School will provide upgraded facilities for the school community including:



New classrooms and specialised learning spaces



Modern core facilities including a library and multipurpose hall



Agricultural facilities



Sports fields and sports courts



New Indigenous Cultural Centre

Progress summary

Construction has continued at the site of the new high school with internal works such as walls, ceilings, painting and joinery in progress. The lift has been installed and external works at the school have commenced. Stormwater upgrade works outside of the school site along Charles and George Streets have continued with most of the stormwater drainage pipes now installed, and works are underway to prepare the site where the new levee stormwater pump will be installed.

In the coming months we expect to complete works along Charles Street and complete the remaining works inside of the new school buildings. This is in preparation for students and staff to move into the new facilities and to begin using them for Day 1 Term 2 2024.

Storytelling through art - Connecting with Country

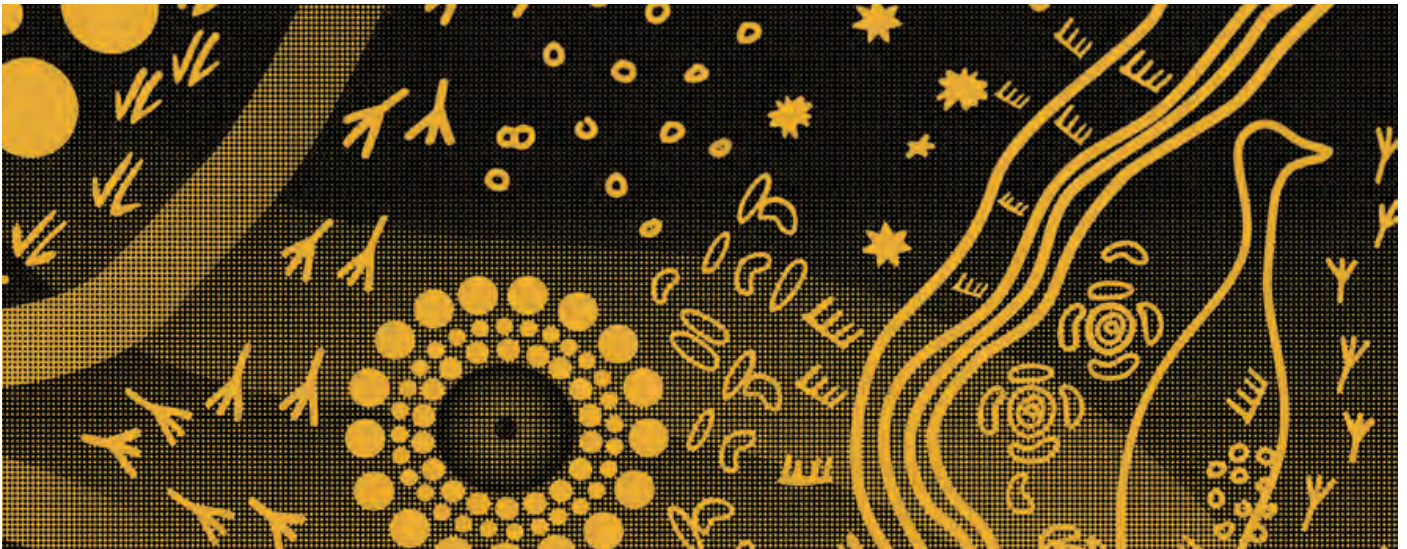
Work has started to deliver the project's Public Art Strategy. Designs completed by Wee Waa High School students will provide the artwork printed on the external screening of the forecourt, and there will be other artwork installed throughout the school. The designs completed by students were made using local Aboriginal techniques which tell the unique story of the town.

The new school buildings are named to reflect Australian native animals and will be written in the local Gomerioi language. Each animal name and image will be printed on signs which have a background design depicting local grass types.

Local language and stories will be placed throughout the school landscape with native plants being a key element of the landscaping.

The current landscape design includes the retention of existing eucalyptus in the forecourt, enhancement of native plantings across the site, and proposed maintenance of the native grass meadow. It is intended that these plants and grasses are a source of traditional food and resource for learning about local culture for staff, students and the community.

The landscape design would be complimented by signage and inclusion within the school curriculum.



Indicative image of the artwork that will be printed on the external screening of the forecourt

Involving our students

Throughout 2023, as a part of the science, technology, engineering and mathematics (STEM) curriculum, and with a focus on Industrial Technology, Year 11 students have used the Wee Waa High School project to gain experience and learn from the industrial elements required to build their new school.

During site visits held during Term 1 and 2 this year, students were able to ask questions of building professionals relating to diverse roles in the project. The content from these visits was further explored as part of their lessons and assessments. Students developed and delivered presentations that explored environmental initiatives and innovative technical practices like Design for Manufacture and Assembly and Cross Laminated Timber panels; Workplace Health and Safety considerations; roles and responsibilities of personnel, and relevant sociological issues such as floods, supply chain issues and structural requirements for the local geography.

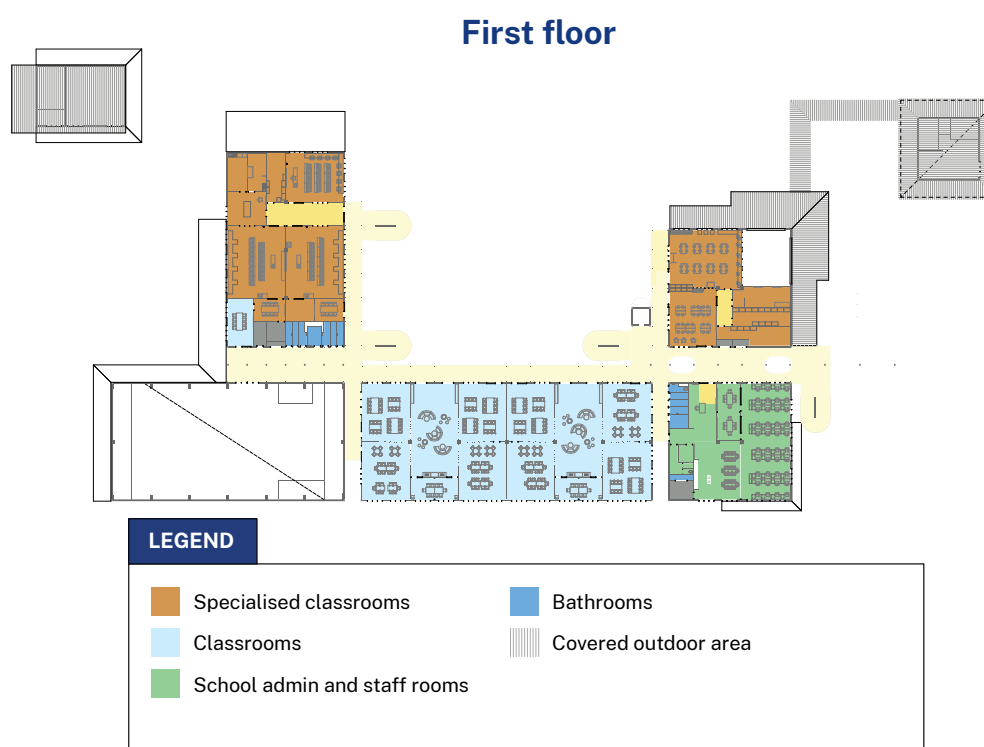
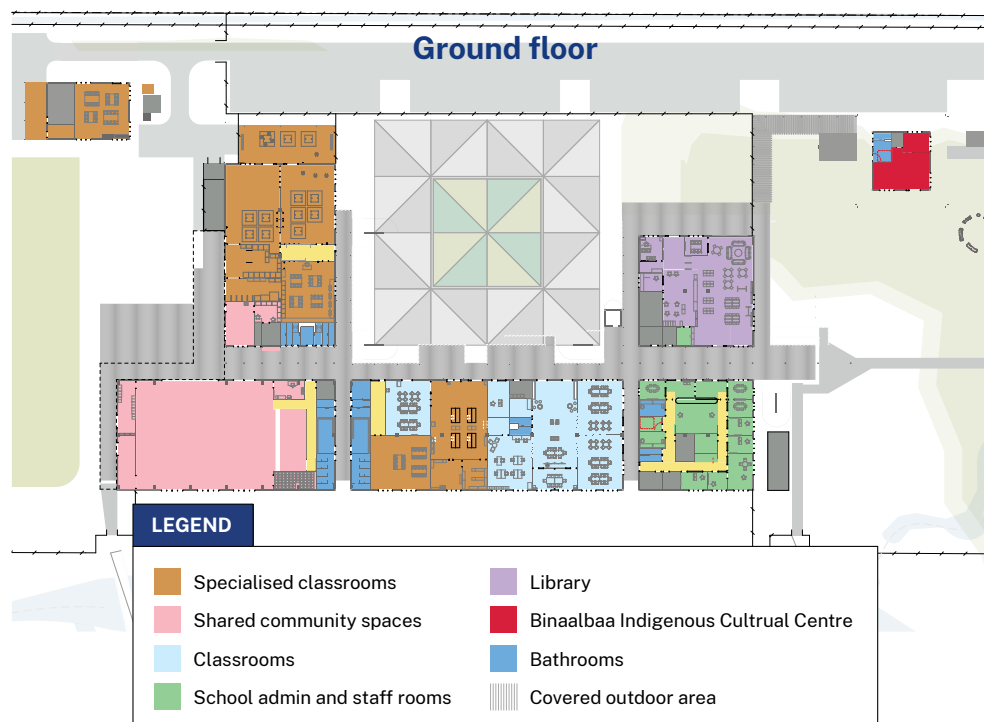
Through the site visits, students were able to gain a greater understanding of the different technologies at work and gained valuable knowledge that they have been able to use during their preliminary and HSC exams.

Wee Waa High School design

The design of the redeveloped high school provides students and the broader community with an asset that enhances the learning and sharing experiences for years to come.

The multipurpose hall will consist of a performance stage and gymnasium that extends to a covered outdoor learning area (COLA) facing the new canteen. The new hall and canteen as well as sports courts and fields will be available for community use in coordination with the school.

The classrooms feature space, furniture and technology that support greater collaboration and improved learning outcomes. Flexibility also helps teachers provide a broad range of learning experiences, empower students to learn at their own pace, and support their learning in different ways.



Frequently asked questions

How and when will the transition of students to the new facilities take place?

All new equipment will be delivered to the new high school early 2024. We expect to have all equipment installed and ready for our students to use for Day 1 Term 2 2024.

When will the works along Charles Street and George Street be finished?

Most of the pipes along Charles Street and George Street have been installed and we have begun to backfill the trenches that were excavated to replace these pipes. The stormwater drainage works are expected to be finished in early 2024. Resealing the roads will commence in the coming months and the streets will reopen for vehicle access prior to the school opening on Day 1 Term 2 2024.

For more information about the works outside the site of the new school please see the May 2022 information pack which can be accessed by visiting the [Wee Waa High School redevelopment project page](#).

What will happen to the existing high school site on Purcell Avenue?

The department has started reviewing the feasibility of the proposed plan to maintain some of the existing school site on Purcell Avenue for the purpose of agricultural studies. This could mean a change to the proposed scope for the agricultural facilities.

We are consulting with the school to ensure that the operational needs for the agricultural program are considered. The agricultural facilities for the school will not be decreased nor will the agricultural facilities of the school be worse off.

We expect to have an idea of what this new scope could be in the new year and the community will be informed when this is confirmed. In the meantime, Agricultural classes will continue as per usual. We are mindful that the facilities are still being used by the school and we will be working to minimise any impact to the school as we plan the upgrade of these facilities.

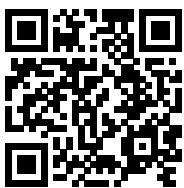
Why has the project been delayed?

During the planning and delivery of the project, delays were encountered due to factors such as statutory approval processes, wet weather, materials procurement as well as the complexity of the flood mitigation stormwater works.

As the project nears completion, inspections are undertaken of the works to ensure that they are in line with the department's requirements. This has resulted in an impact to the completion timeline.

Although the department continues to assess the completed works as it gets closer to completion, we are confident that the facilities will be completed in time to welcome students in Day 1 Term 2 2024.

Stay informed



To have project updates emailed directly to you, complete the 'Get involved' contact form at edu.nsw.link/WeeWaaHS or scan the QR code.

Website: schoolinfrastructure.nsw.gov.au

Email: schoolinfrastructure@det.nsw.edu.au

Phone: 1300 482 651 between 9 am and 5 pm, Monday to Friday

At the NSW Department of Education, we recognise the traditional custodians of the lands and waterways where we work and live. We celebrate the First Peoples' unique cultural and spiritual relationship to Country and acknowledge the significance of Aboriginal cultures in Australia.