

# Project update

Construction has continued to deliver the new high school.

Works are expected to be complete in the coming months and have begun preparation for transitioning students to their new school for Day 1 Term 2 2024.



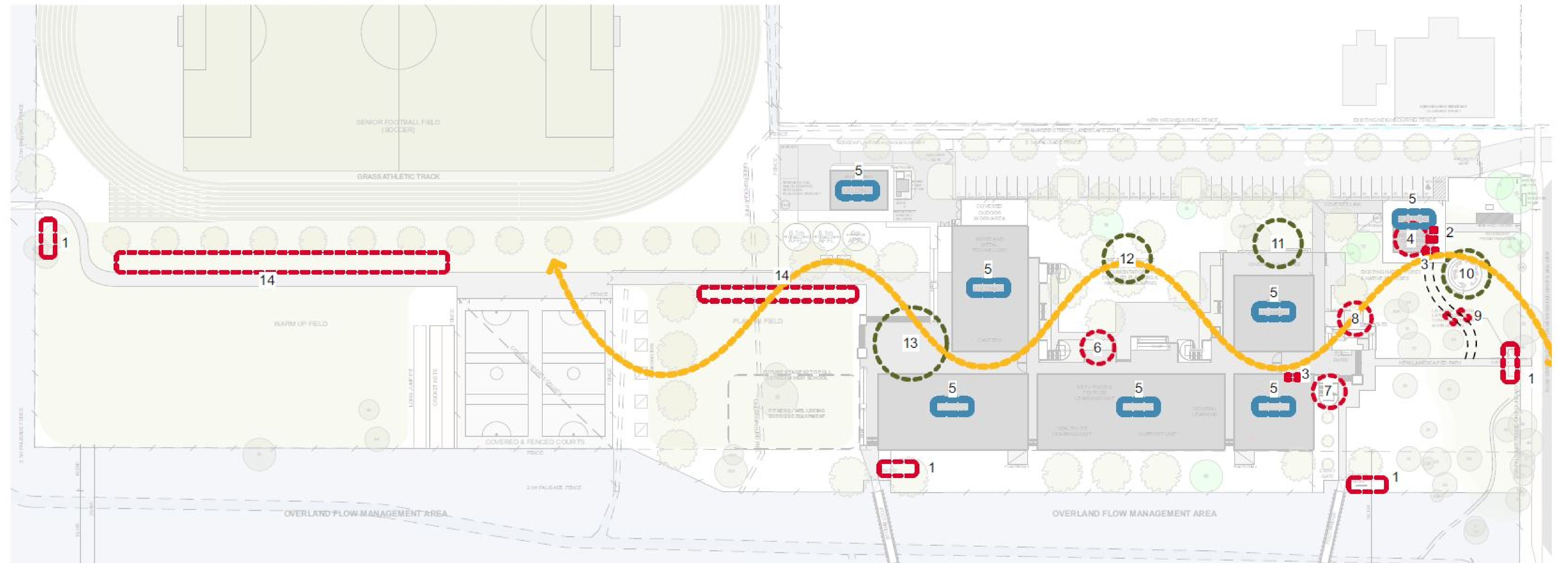
Artist impression of Wee Waa High School

## Wee Waa High School redevelopment

For more information phone: 1300 482 651  
Email: [schoolinfrastructure@det.nsw.edu.au](mailto:schoolinfrastructure@det.nsw.edu.au)  
[schoolinfrastructure.nsw.gov.au](http://schoolinfrastructure.nsw.gov.au)

# Connecting with Country

Local language and stories will be woven throughout the outside environment with native plants being a key element of the landscaping.



1. Incorporation of Indigenous motifs on school entry signs
2. Indigenous Centre - external artwork by local artist - to be detailed
3. Welcome/Acknowledgement of Country on main entry doors to administration & Indigenous Centre
4. Honour board, feature flooring and local area artefacts housed within display cases.
5. Buildings named using local language
6. Local area totems located within courtyard space
7. Stair screen artwork reflecting local symbolism and food sources
8. Flagpoles with Indigenous flags included
9. Memorial walk for first AEO's at the school and in NSW
10. Yarning/community circle
11. Outdoor learning space off library
12. Main courtyard area with native planting
13. External performance space
14. Location for signage and wayfinding, including local language and stories
15. Archibull installation at main school entry

## Wee Waa High School redevelopment

For more information phone: 1300 482 651  
Email: [schoolinfrastructure@det.nsw.edu.au](mailto:schoolinfrastructure@det.nsw.edu.au)  
[schoolinfrastructure.nsw.gov.au](http://schoolinfrastructure.nsw.gov.au)

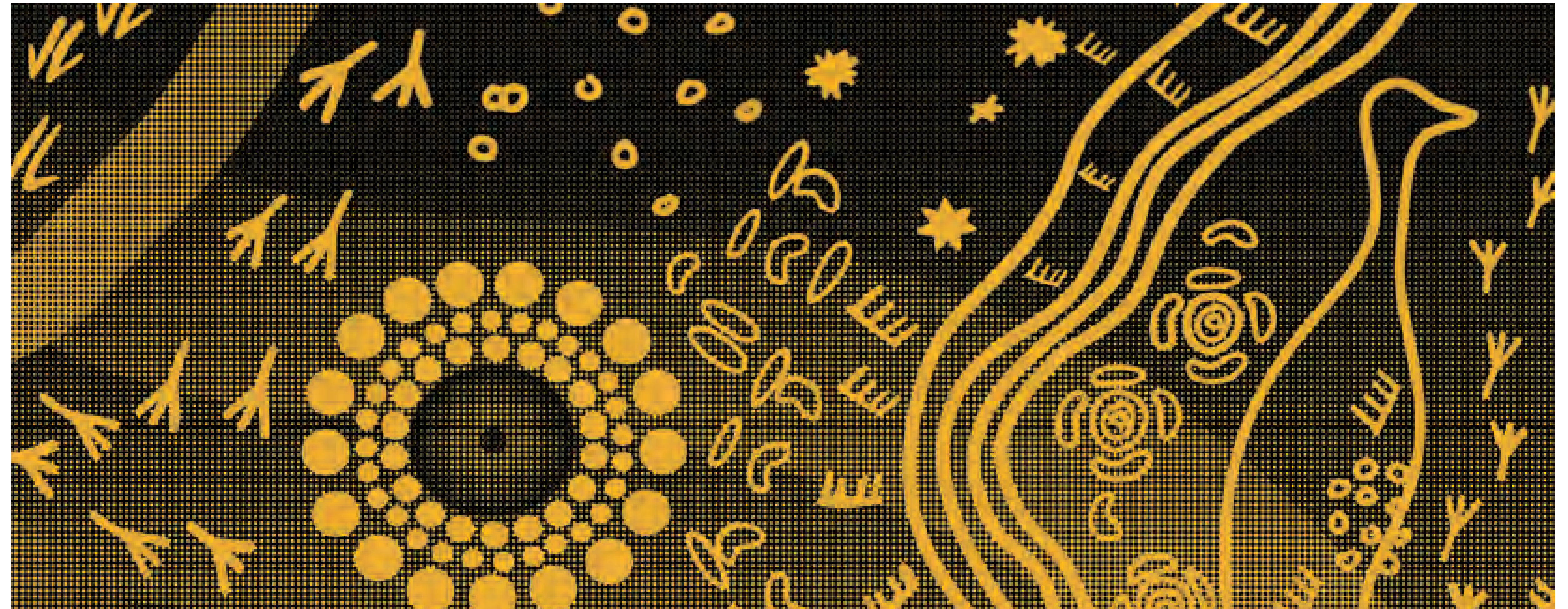
# Storytelling through art

We have begun working to deliver the projects Public Art Strategy which will see artworks weaved throughout the new school.

Designs completed by Wee Waa High School students will provide the artwork printed on the external screening of the forecourt.

The designs were made using local Aboriginal techniques which tell the unique story of the town.

Local language and stories will be placed throughout the outside environment with native plants being a key element of the landscaping.



Indicative image of the artwork that will be printed on the external screening of the forecourt



Example artwork completed at the previous site of the High School



Example artwork completed at the previous site of the High School

## Wee Waa High School redevelopment

For more information phone: 1300 482 651  
Email: [schoolinfrastructure@det.nsw.edu.au](mailto:schoolinfrastructure@det.nsw.edu.au)  
[schoolinfrastructure.nsw.gov.au](http://schoolinfrastructure.nsw.gov.au)

# Connecting with our students

Throughout 2023, year 11 students have used the Wee Waa High School project to gain experience and learn from the industrial elements required to build their new school.

During site visits, students were able to ask questions from building professionals relating to diverse roles in the project. The content from these visits were further explored as part of their lessons and assessments. Students developed and delivered presentations that explored all aspects that make up the construction process.

Through the visits, students were able to gain a greater understanding of the different technologies at work and gained valuable knowledge that they have been able to use during their Preliminary and HSC exams.



Wee Waa HS year 11 Students during site visits throughout 2023

## Wee Waa High School redevelopment

For more information phone: 1300 482 651  
Email: [schoolinfrastructure@det.nsw.edu.au](mailto:schoolinfrastructure@det.nsw.edu.au)  
[schoolinfrastructure.nsw.gov.au](http://schoolinfrastructure.nsw.gov.au)

# Layout ground floor

The detailed design of the redeveloped high school provides students and the broader community with an asset that enhances the learning and sharing experiences for years to come.

The multipurpose hall will consist of a performance stage and gymnasium that extends to a covered outdoor learning facing area the new canteen. The new hall and canteen as well as sports courts and fields will be available for community use in coordination with the school.

A fully equipped commercial kitchen will be connected to a small bistro where students can have culinary and hospitality lessons.



## Wee Waa High School redevelopment

For more information phone: 1300 482 651  
Email: [schoolinfrastructure@det.nsw.edu.au](mailto:schoolinfrastructure@det.nsw.edu.au)  
[schoolinfrastructure.nsw.gov.au](http://schoolinfrastructure.nsw.gov.au)



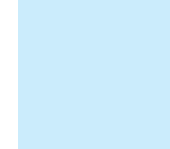
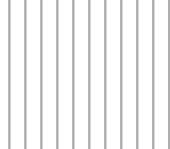

# Layout first floor

The school's general learning spaces are designed to provide a flexible learning environment. Fittings, walls and furniture are designed to be mobile, ensuring flexible use of the space available.

These learning environments feature space, furniture and technology that support greater collaboration and improved learning outcomes. Flexibility also helps teachers provide a broad range of learning experiences, empower students to learn at their own pace and support their learning in different ways.



## LEGEND

- |  |  |
|--|--|
|  Specialised classrooms       |  Bathrooms            |
|  Classrooms                   |  Covered outdoor area |
|  School admin and staff rooms |  |

## Wee Waa High School redevelopment

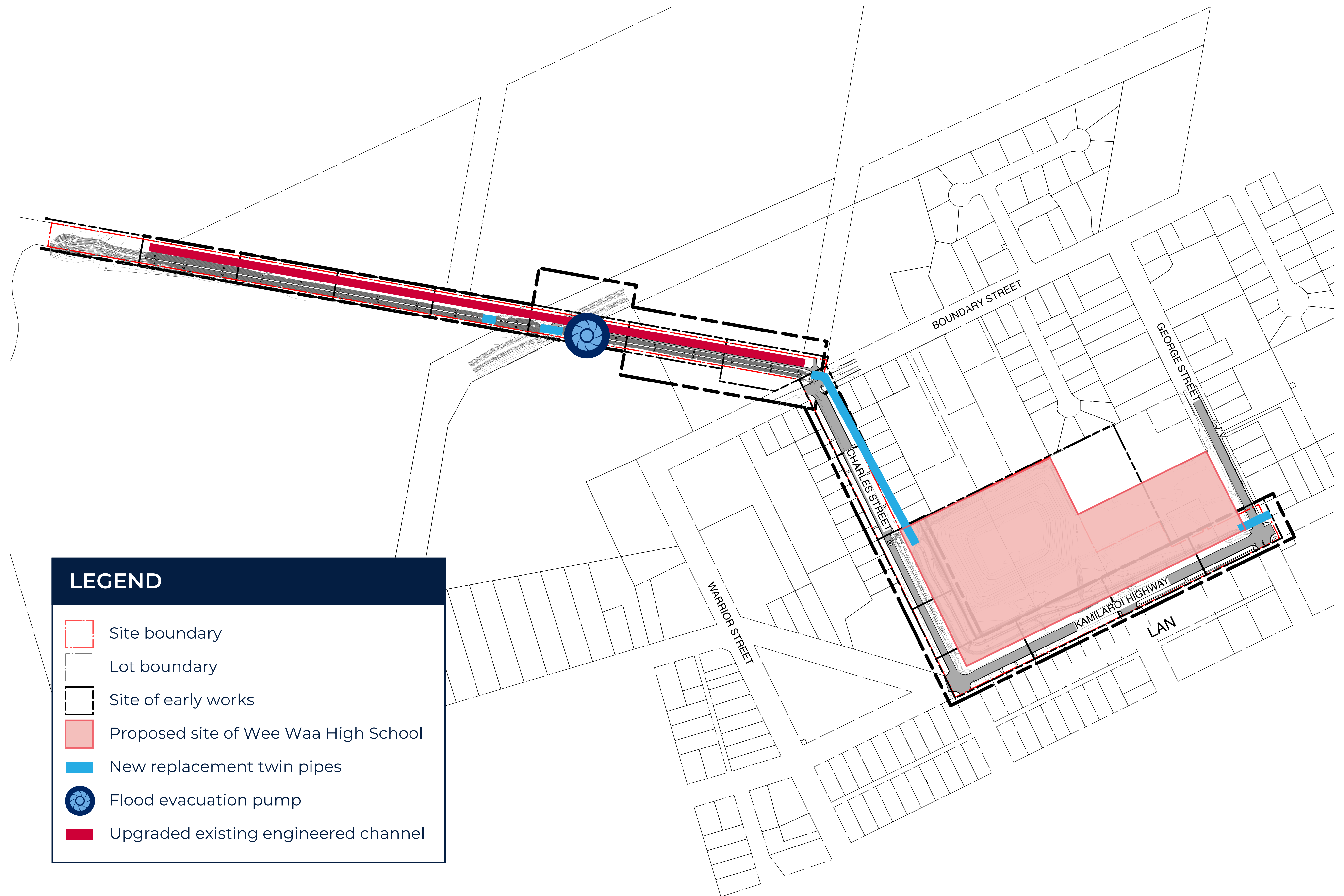
For more information phone: 1300 482 651  
Email: [schoolinfrastructure@det.nsw.edu.au](mailto:schoolinfrastructure@det.nsw.edu.au)  
[schoolinfrastructure.nsw.gov.au](http://schoolinfrastructure.nsw.gov.au)

# Stormwater infrastructure works

## Drainage towards Namoi River

We are upgrading the stormwater drainage system to ensure water can flow to be discharged in the Namoi River. Existing pipes running from the new school site under Charles Street towards Boundary Street are being replaced with larger pipes.

The existing engineered channel that carries water from Boundary Street towards the Namoi River is being lowered and upgraded, pipes that carry water underneath the town levee and a walking track outside of the levee are being increased. An additional stormwater drainage pump is being installed at the town levee.



## Wee Waa High School redevelopment

For more information phone: 1300 482 651  
Email: [schoolinfrastructure@det.nsw.edu.au](mailto:schoolinfrastructure@det.nsw.edu.au)  
[schoolinfrastructure.nsw.gov.au](http://schoolinfrastructure.nsw.gov.au)