

Main works

We have received planning approval for the project’s State Significant Development application, and construction of the new school has started.

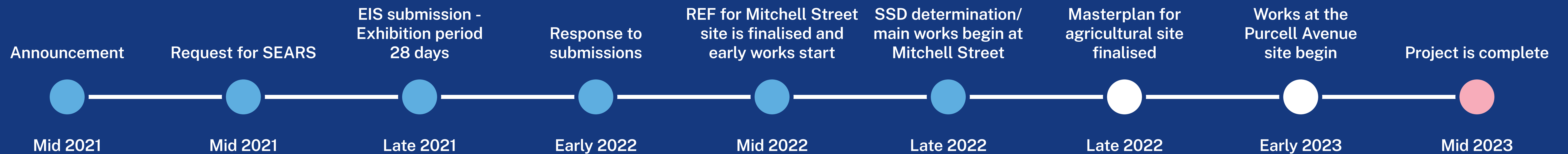
In the September 2022 project update, we shared some factors with the community that have resulted in the expected finish date for the project being adjusted. Recent weather events have resulted in the program for delivery to be adjusted and it is now expected that the new facilities will be completed in mid 2023.

We have established the construction zone at the site of the new school on Mitchell Street and bulk earthworks and levelling of the site have begun. We will proceed with the ground works, which involve digging the trenches that will hold water drainage and sewer systems as well as inserting cables that will provide services like electricity and internet to the new school.



Artist impression of Wee Waa High School

Timeline



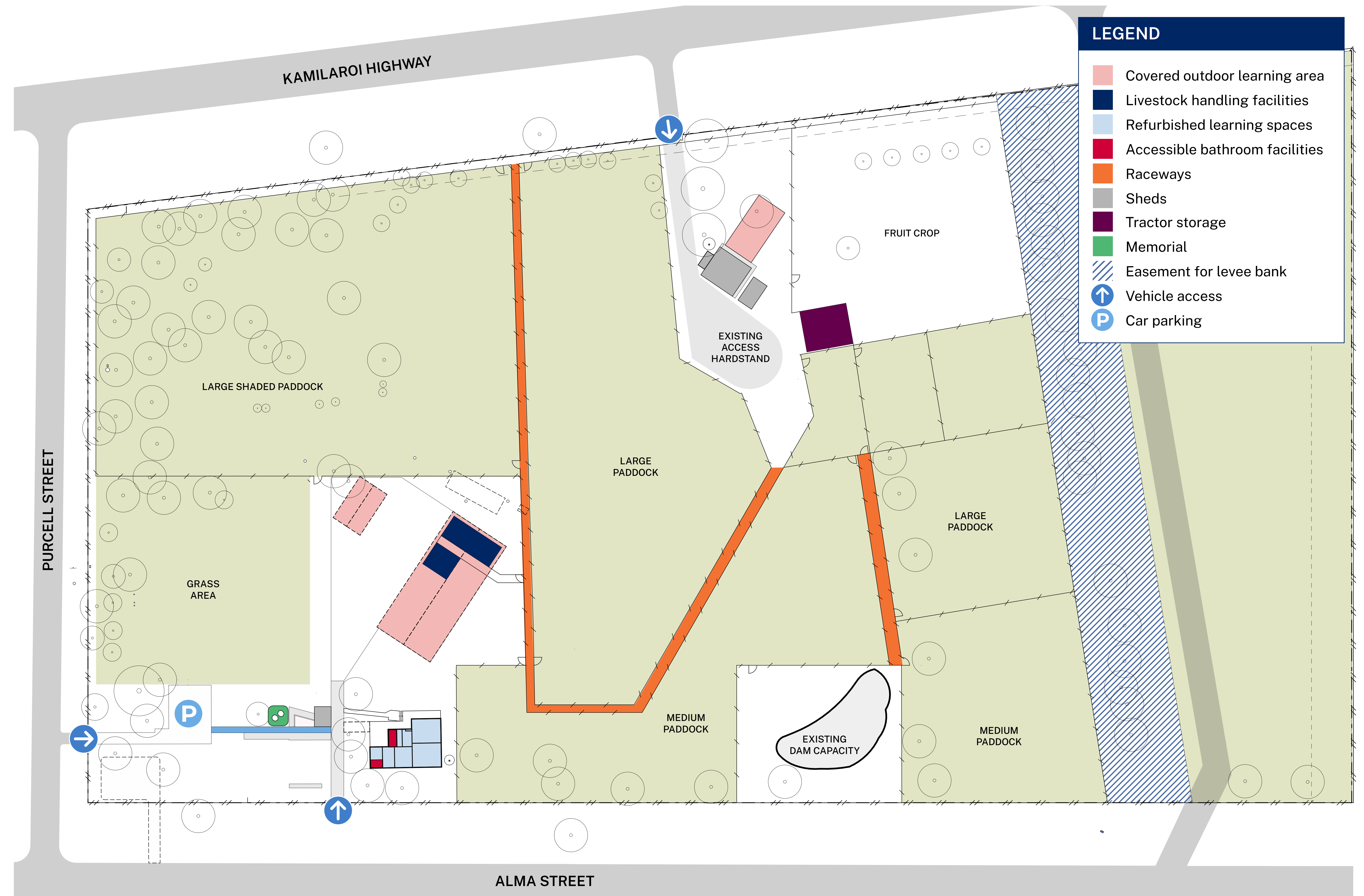
Wee Waa High School redevelopment

For more information phone: 1300 482 651
Email: schoolinfrastructure@det.nsw.edu.au
schoolinfrastructure.nsw.gov.au

Purcell Avenue masterplan

Wee Waa High School's agricultural education program is recognised in the region by students' achievements in agricultural shows across the district. The upgraded facilities will enhance the school's program by providing a hands on experience of working in the agricultural sector.

The masterplan of the new agricultural facilities is finished and was developed in consultation with the school's agriculture teacher, students and school leadership team.



Wee Waa High School redevelopment

For more information phone: 1300 482 651
Email: schoolinfrastructure@det.nsw.edu.au
schoolinfrastructure.nsw.gov.au

Connecting with Country

Wee Waa students, and representatives from the local Gomeri community have taken part in Connecting with Country workshops. These aimed to reflect Wee Waa's Gomeri heritage and ancestral culture, within the new schools design.

Design works created by Wee Waa High School students have been transferred onto a larger scale screen. This screen will wrap around the main entry stairs. The symbols and colours of the screen reflect the local food sources and strong community links which were also the main themes raised during the consultations.



Banners designed by Wee Waa High School students

External screen design created using student banner design elements



Connecting with Country Workshops



Connecting with Country Workshops



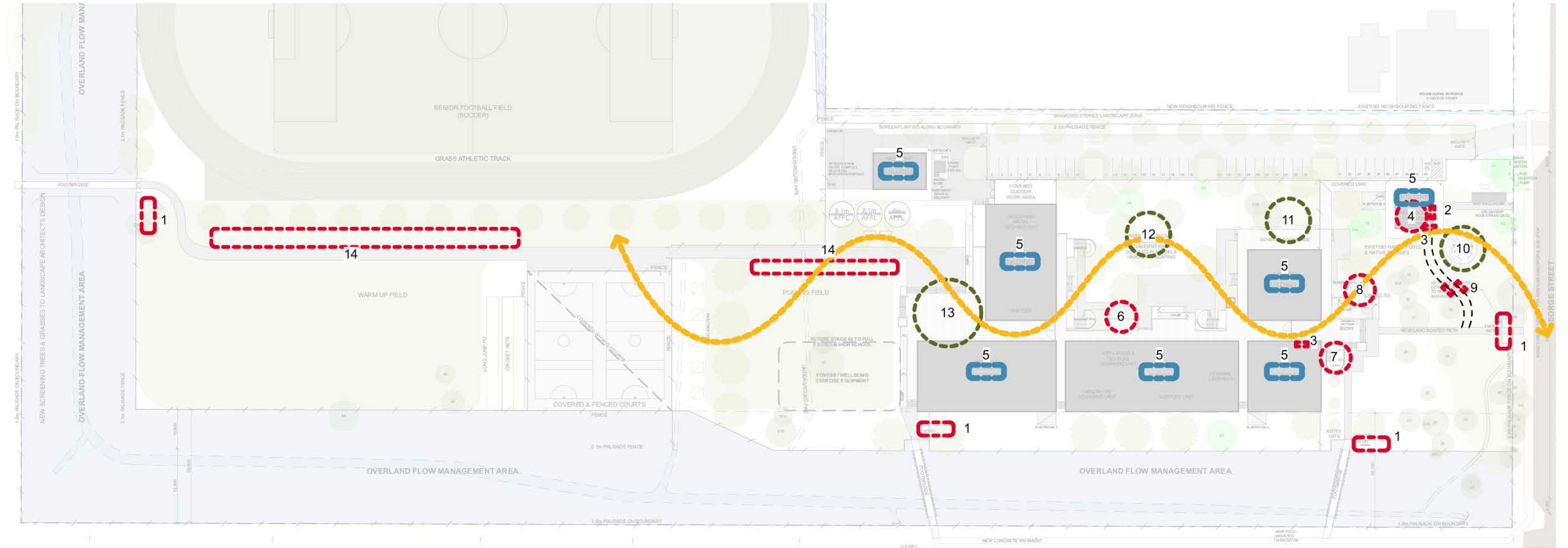
Workshops with both high school and primary school students

Wee Waa High School redevelopment

For more information phone: 1300 482 651
Email: schoolinfrastructure@det.nsw.edu.au
schoolinfrastructure.nsw.gov.au

Connecting with Country

Local language and stories will be woven throughout the outside environment with native plants being a key element of the landscaping.



1. Incorporation of Indigenous motifs on school entry signs
2. Indigenous Centre - external artwork by local artists - to be detailed
3. Welcome/Acknowledgement of Country on main entry doors to administration & Indigenous Centre
4. Honour board, feature flooring (Tulladunna map) and local area artefacts housed within
5. Buildings named using local language - food sources
6. Local area totems inside main courtyard
7. Stair screen artwork reflecting local language and food source
8. Flagpoles with indigenous flags included as well as Australian flag
9. Memorial Walk for first AEO's at the school
10. Yarning/community circle
11. Outdoor learning space off library
12. Main courtyard area with native planting
13. External performance space
14. Location for signage and wayfinding, including local language and stories

Wee Waa High School redevelopment

For more information phone: 1300 482 651
Email: schoolinfrastructure@det.nsw.edu.au
schoolinfrastructure.nsw.gov.au

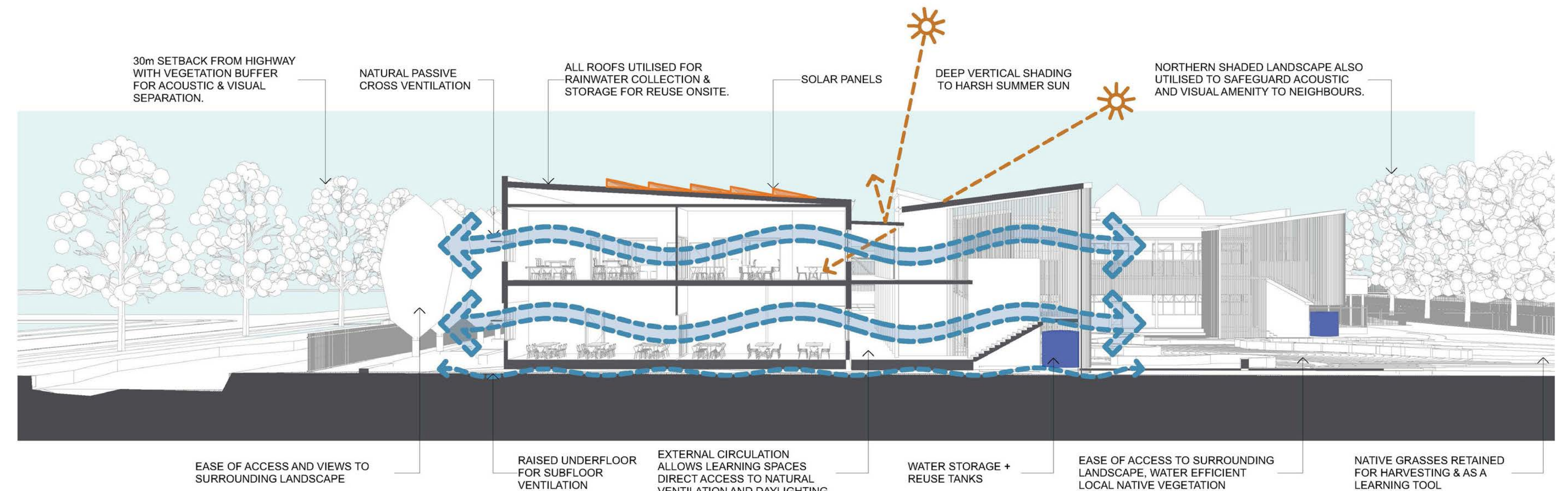
Sustainable school design

The school has several external covered walkways with circulation, ventilation and security being a key driver in design.

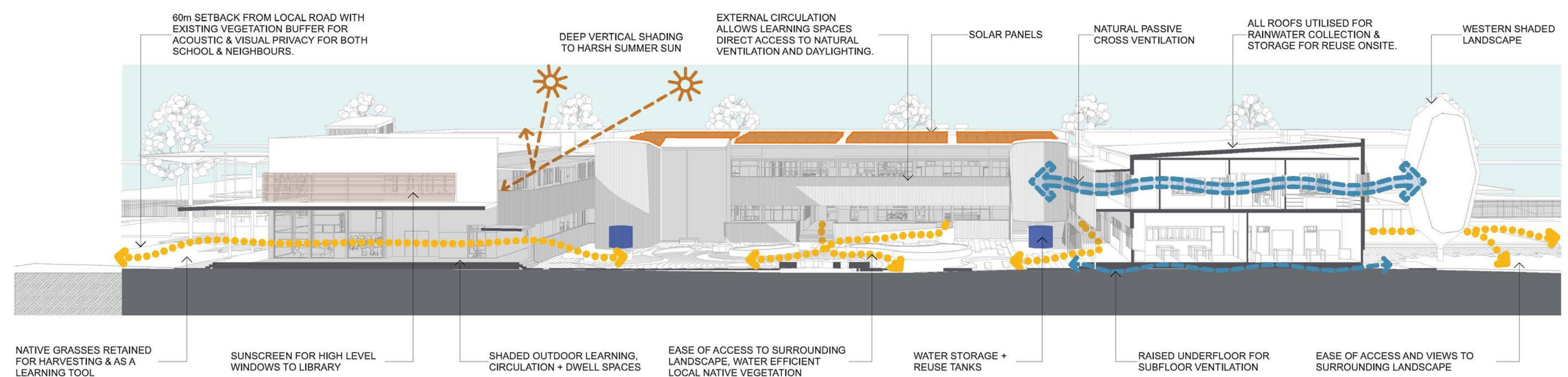
Natural cross ventilation and energy efficiency is an important element of the new school.

Underfloor ventilation throughout will prevent moisture from accumulating.

North-south sectional diagram



East-west sectional diagram



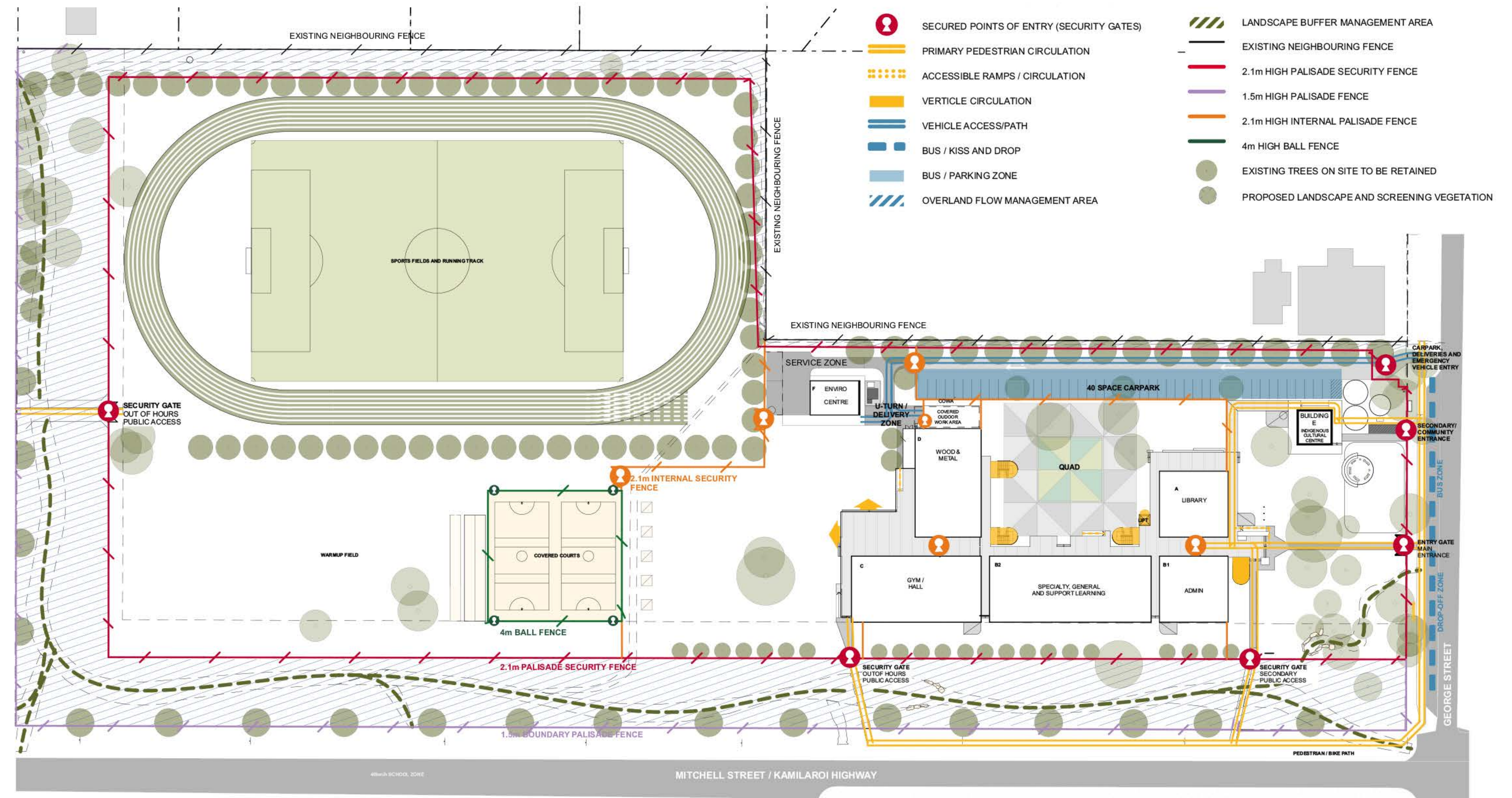
Wee Waa High School redevelopment

For more information phone: 1300 482 651
Email: schoolinfrastructure@det.nsw.edu.au
schoolinfrastructure.nsw.gov.au

Ensuring security & safety

Landscaping and fencing will provide visual privacy to surrounding neighbours.

Security fencing has been designed to ensure that students and the public can safely use the new facilities.



Wee Waa High School redevelopment

For more information phone: 1300 482 651
Email: schoolinfrastructure@det.nsw.edu.au
schoolinfrastructure.nsw.gov.au

Layout ground floor

The detailed design of the redeveloped high school provides students and the broader community with an asset that enhances the learning and sharing experiences for years to come.

The multipurpose hall will consist of a performance stage and gymnasium that extends to a covered outdoor learning facing area. The new hall and canteen as well as sports courts and fields will be available for community use in coordination with the school.

A fully equipped commercial kitchen will be connected to a small bistro where students can have culinary and hospitality lessons.



Wee Waa High School redevelopment

For more information phone: 1300 482 651
Email: schoolinfrastructure@det.nsw.edu.au
schoolinfrastructure.nsw.gov.au

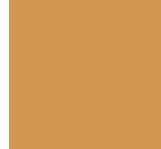
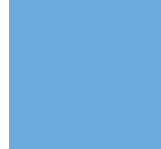
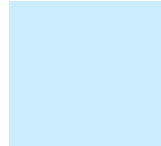


Layout first floor

The school's general learning spaces are designed to provide a flexible learning environment. Fittings, walls and furniture are designed to be mobile, ensuring flexible use of the space available.

These learning environments feature space, furniture and technology that support greater collaboration and improved learning outcomes. Flexibility also helps teachers provide a broad range of learning experiences, empower students to learn at their own pace and support their learning in different ways.



LEGEND

- | | |
|--|--|
|  Specialised learning spaces |  Bathrooms |
|  General learning spaces |  Covered outdoor area |
|  School admin and staff rooms | |

Wee Waa High School redevelopment

For more information phone: 1300 482 651
Email: schoolinfrastructure@det.nsw.edu.au
schoolinfrastructure.nsw.gov.au