

# Welcome to the Warnervale new primary school information session



Artist's impression of the main entry (subject to detailed design)

## Warnervale New primary school

For more information phone: 1300 482 651  
Email: [schoolinfrastructure@det.nsw.edu.au](mailto:schoolinfrastructure@det.nsw.edu.au)

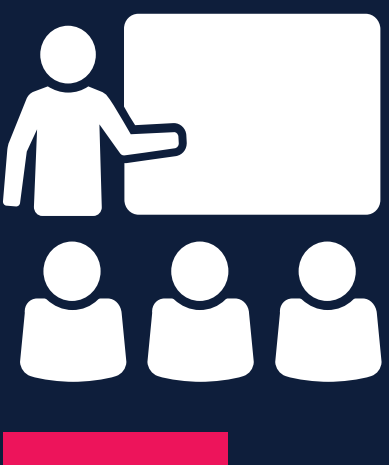


# Project overview

A project is underway to build an additional primary school in Warnervale to cater for projected enrolment growth in the area.



Artist's impression of the northern perspective from Warnervale Road (subject to detailed design)



permanent innovative and flexible learning spaces



student facilities, including canteen and OOSH



administration and staff facilities



hall



library



landscaped outdoor areas, including COLA

## Warnervale New primary school

For more information phone: 1300 482 651  
Email: [schoolinfrastructure@det.nsw.edu.au](mailto:schoolinfrastructure@det.nsw.edu.au)



# Progress summary

The concept design for the new school has been completed. The concept design was developed by a Project Reference Group (PRG) composed of architects, planners and design professionals, combined with the Central Coast Aboriginal Education Consultative Group president, Central Coast Council of P&Cs president, the Environmental Education Centre principal and other local school leadership representatives.

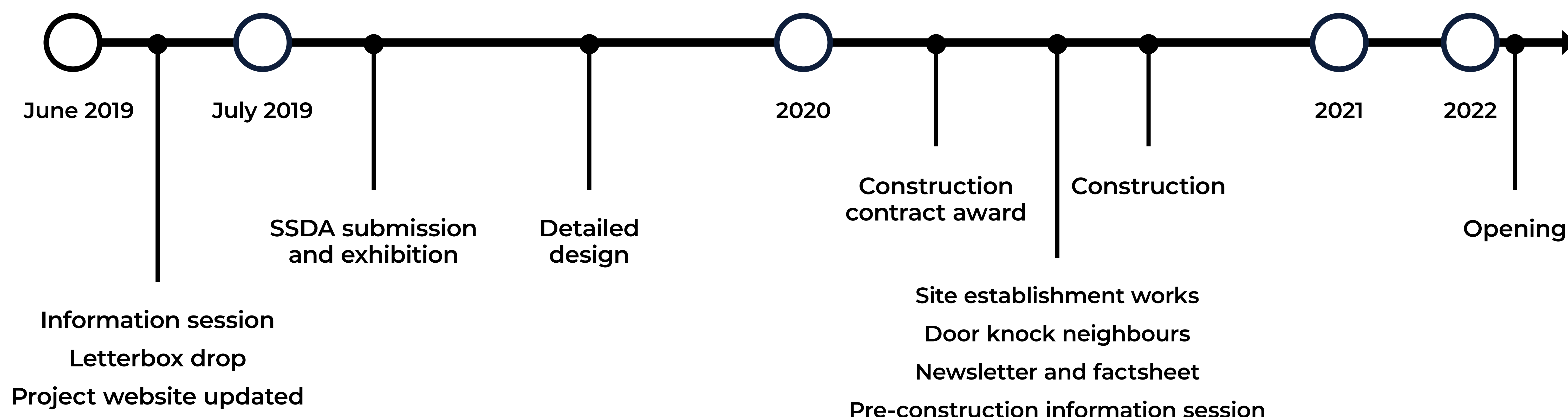
The State Significant Development Application will be lodged with the Department of Planning and Environment in mid-2019 and will be on public exhibition for a minimum of 28 days.



Artist's impression of the library (subject to detailed design)

## Indicative project timeline

Project Reference Group meetings (ongoing)



## Warnervale New primary school

For more information phone: 1300 482 651  
Email: [schoolinfrastructure@det.nsw.edu.au](mailto:schoolinfrastructure@det.nsw.edu.au)



# Location of the new primary school

## 75 Warnervale Road, Warnervale

- Public transport is close (<600m)
- Warnervale Oval is easily accessible
- Driving distance (6km) to Budgewoi Lake
- Biodiversity learning opportunities
- Views to natural vegetation
- Space for future expansion



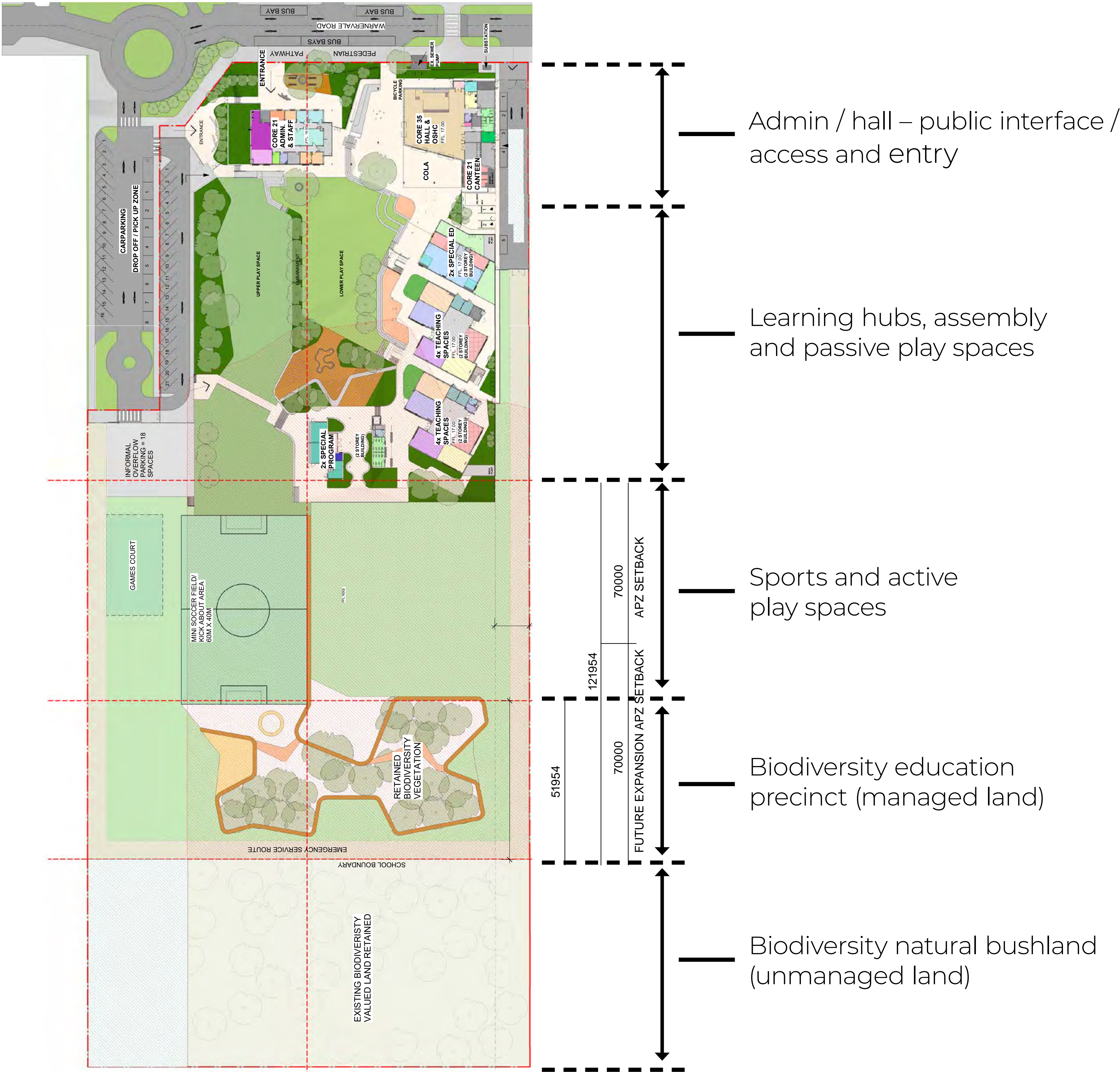
Location of Warnervale new primary school

## Warnervale New primary school

For more information phone: 1300 482 651  
Email: [schoolinfrastructure@det.nsw.edu.au](mailto:schoolinfrastructure@det.nsw.edu.au)



# Indicative site layout plan



Note: The designs are conceptual at this stage and will be further developed during detailed design.



Artist's impression of the library (subject to detailed design)



Artist's impression of the outdoor learning areas (subject to detailed design)

## Warnervale New primary school

For more information phone: 1300 482 651  
Email: schoolinfrastructure@det.nsw.edu.au



# Traffic and pedestrian movement

- Bringing vehicles and pedestrians off Warnervale Road improves safety
- Two access points into school
- On-site short-term parking and kiss and ride zone
- Bus stops located in front of school with access to a roundabout
- Potential future carpark expansion to the south

