

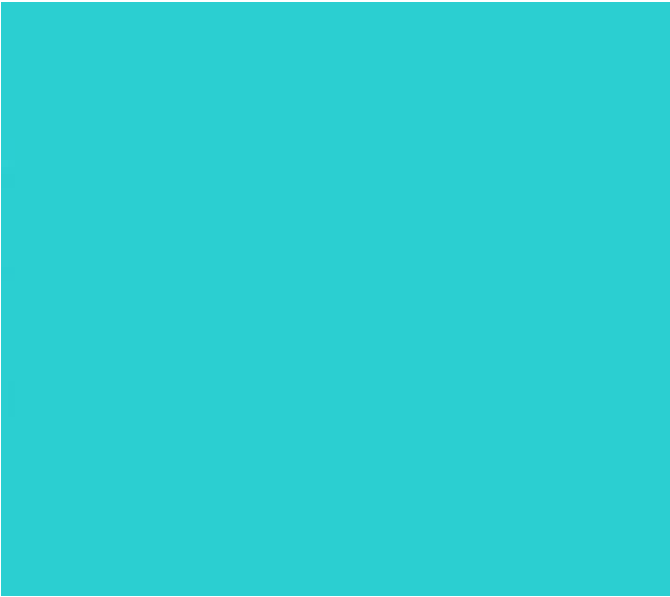
'SCHOOL IDENTITY
COLOUR PALETTE'



CFC CLADDING.
'DARK BLUE'

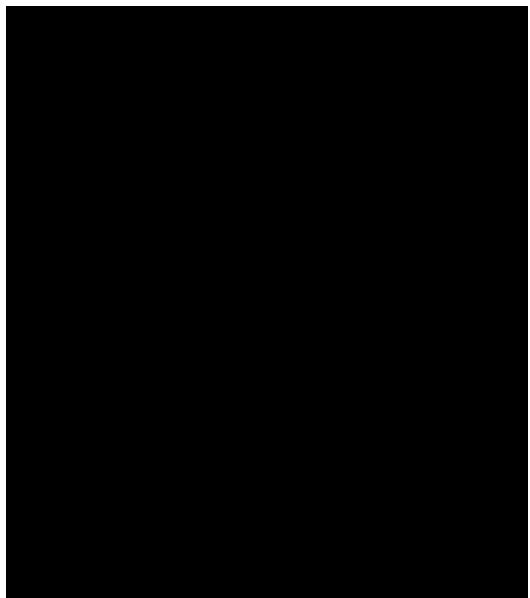


CFC CLADDING.
'LIGHT BLUE'

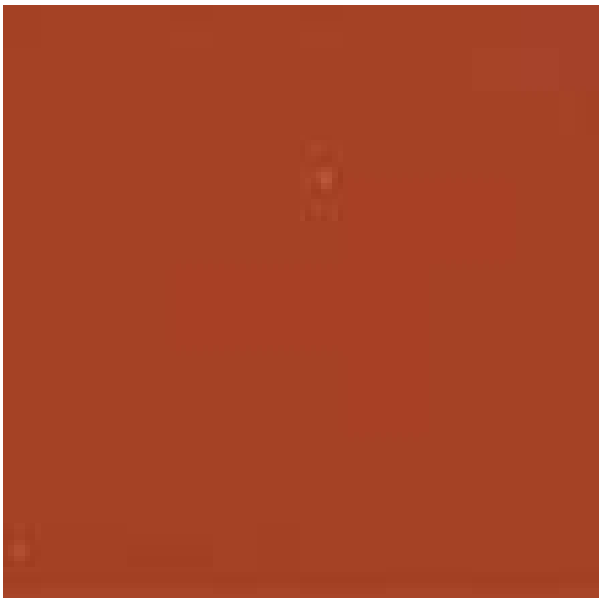


CFC CLADDING.
'AQUA BLUE'

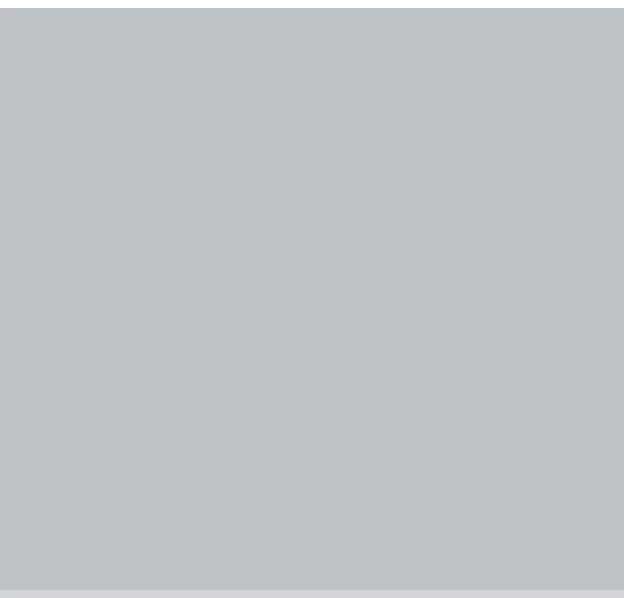
'WAITARA HERITAGE
COLOUR PALETTE'



CFC CLADDING.
'BLACK'



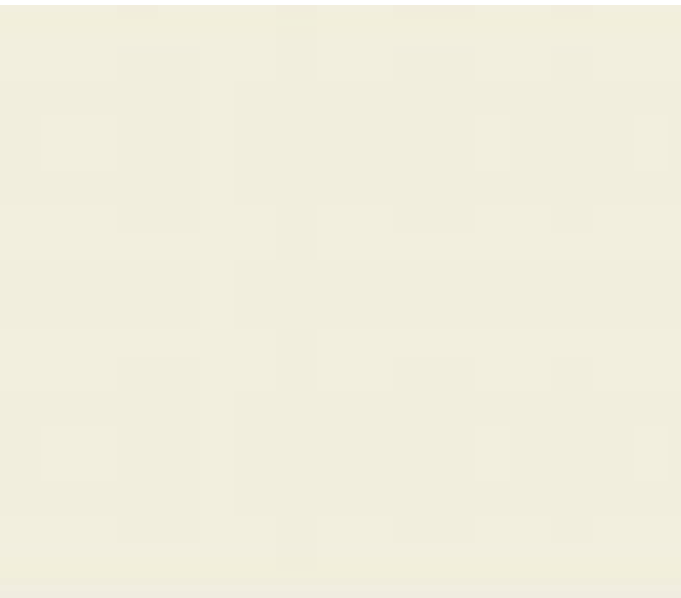
CFC CLADDING.
'HERITAGE BRICK'



CFC CLADDING.
'SILVER STEEL' GREY



SPANDEK METAL CLADDING,
FACIAS & GUTTERS.
'MONUMENT' DARK GREY



METAL ROOFING, CFC CLADDING.
'SURFMIST' WHITE

'WAITARA HERITAGE
TEXTURE / PATTERN
PALETTE'



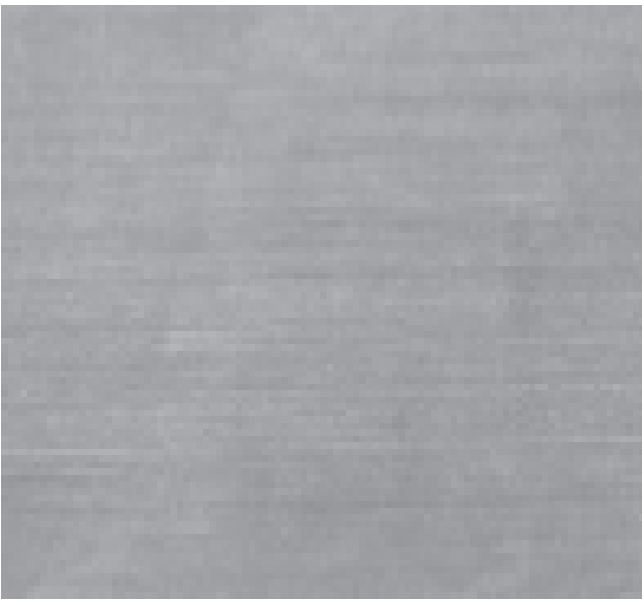
TRADITIONAL STAGGERED
PATTERNED FACADE



KLIP-LOK STEEL PROFILE.
(ROOFING)



EXPOSED CONCRETE



NATURAL GREY ALUMINIUM.
(WINDOW JOINERY)



STANDARD PATTERN
BLOCKWORK



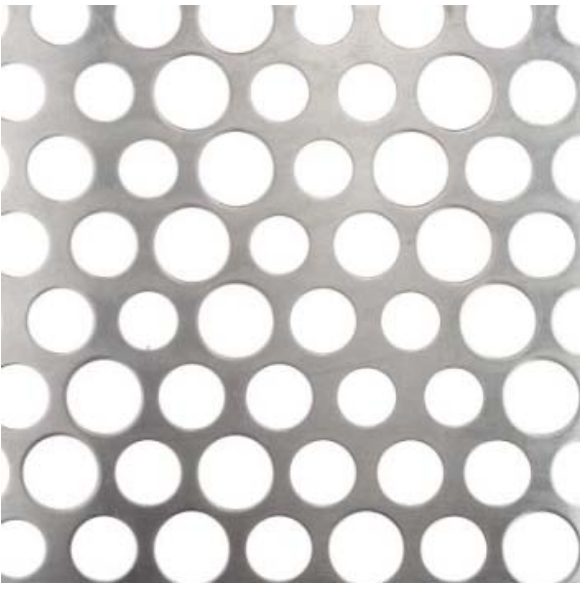
PANEL-RIB STEEL PROFILE.
(SOFFITS)



SPANDEK STEEL PROFILE.
(FACADE)



GLAVANISED STEEL



PERFORATED ALUMINIUM.
(BALUSTRADES)

Issue			
No.	Date	Description	Chkd
A	08/03/2019	Alternative Facade Option	EK

FOR INFORMATION

Drawing Title
External Finishes Schedule - Option 2

ORIGINAL DESIGN BY GHD WOODHEAD

Project
WAITARA PUBLIC SCHOOL
DEVELOPMENT
at
68 EDGEWORTH DAVID AVENUE, WAHROONGA
for
NSW DEPARTMENT OF EDUCATION

Architect
NBRSPARTNERSARCHITECTURE.
Sydney
61 2 9922 2344
nbrsarchitecture.com
Any form of replication of this drawing in full or in part without the written
permission of NBRSPARTNERS Pty Ltd constitutes an infringement of
the copyright. ABN 16 002 247 565
Nominated Architects:
Geoffery Deane 3766; Andrew Duffin; Garry Hoddinett 5286
© 2017

Date 8/03/2019 11:17:10 AM
Scale 1:0 @ A1 or 1:0 @ A3

Drawing Reference 18159-A-WD-90-24 A
Revision

0 10m 10m 10m 10m 10m 10m 10m 10m 1:0