

Ulladulla High School upgrade

Planning update | April 2024

Investing in our schools

As part of the NSW Government's plan to rebuild essential services, the 2023-24 Budget is delivering a historic \$1.4 billion for new and upgraded schools in regional NSW. This targeted investment in growing communities will ensure working families get access to a world class public education.

These funds will help to upgrade Ulladulla High School to deliver new and upgraded facilities.

The upgrade will include 11 new classrooms, including dedicated classrooms and facilities for students with support needs and new amenities. The upgrade will also include refurbishment of all existing teaching and specialist spaces.

Have your say – consultation survey

You're invited to give us your feedback and let us know what is important to you by responding to this survey: https://edu.nsw.link/UlladullaHS_Survey

The survey will be open from **Wednesday 3 April** to **Friday 19 April 2024**.

We will share a summary of feedback received and there will be further opportunities to find out more and provide feedback as the project progresses.



Progress update

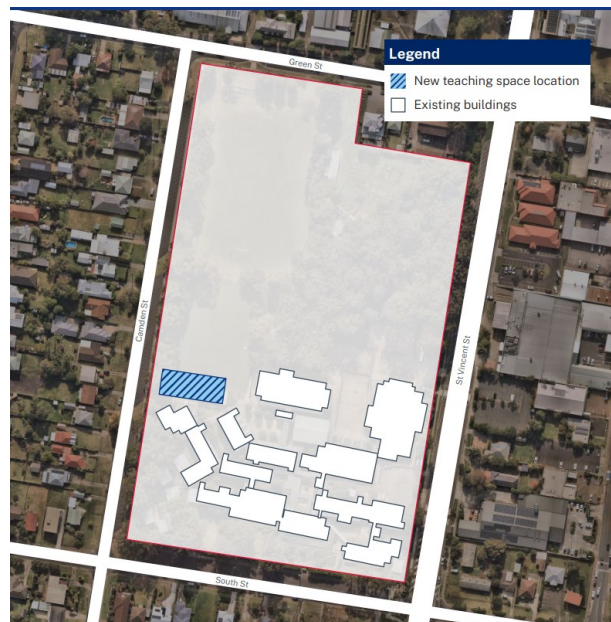
Early planning has begun. At this stage of the project, site investigations and needs analysis are underway. This phase involves consideration and studies of demographic trends, education requirements, intake areas, technical studies, planning requirements, transport links and possible shared area opportunities.

The proposed site plan (right) indicates the proposed location where the new classroom building will be located at the Ulladulla High School site.

Next steps

In the next phase of the project, architects and engineers will be appointed and analysis of the site takes place, along with the development of the concept design. Doing so means that we consider the needs of the local area now and into the future and ensure the right school facilities are designed for the community.

Proposed site plan (subject to planning approvals)



Further updates will be released as the project progresses.

How can I get involved?

We are committed to working together with our school communities and stakeholders to deliver the best learning facilities for students. As the project progresses from the planning phase, we will share details with the community for feedback.

A dedicated project page has been published which is updated as the project progresses. The webpage can be found at <https://edu.nsw.link/UlladullaHS> or scan the QR code.



How can I sign up to the mailing list?

You can register to receive project updates, works notifications and other communications emailed directly to you by completing the contact form https://edu.nsw.link/UlladullaHS_Updates or scan the QR code.



Want to know more about how we build and upgrade schools?

To learn more about how we deliver new and upgraded schools scan the QR Code or visit edu.nsw.link/SchoolShowcase





For a **Translation and Interpreting Service** call **131 450** and ask them to call the Department of Education - School Infrastructure NSW on **1300 482 651**.

