

Tweed Heads South Public School

Information pack | March 2021



New entry at Tweed Heads South Public School

The NSW Government is investing \$7 billion over four years, continuing its program to deliver more than 200 new and upgraded schools to support communities across NSW. This is the largest investment in public education infrastructure in the history of NSW.

The NSW Department of Education is committed to delivering new and upgraded schools for communities across NSW. The delivery of these important projects is essential to the future learning needs of our students and supports growth in the local economy.

We are upgrading Tweed Heads South Public School to provide new permanent teaching spaces and core facilities.



11 new future focused learning spaces



New library



Redeveloped school entry



Improved playground and open spaces



New OSHC facilities

Progress summary

Early works

Early works to create a new school entry and student canteen were finished in October 2020. The school now has a more welcoming and visually appealing street entrance and a better working environment for canteen volunteers.

Design

We have now finalised the schematic design for the remainder of the upgrade in consultation with school staff and stakeholders. The schematic design, which is submitted with the development application for the project, confirms the internal layout of spaces and how they will function.

Main works

A construction contractor has been appointed for the main works and is currently working through a process to become familiarised with the project.

Statutory planning

The Development Application (DA) for the project will be lodged this month and will then be put on public exhibition by Tweed Shire Council.

We are also conducting a Review of Environmental Factors (REF) which will enable us to progress the construction of the new library building and out of school hours care (OSHC) facilities, as well as the extension and refurbishment of the existing early learning centre (ELC), while the DA is being assessed.

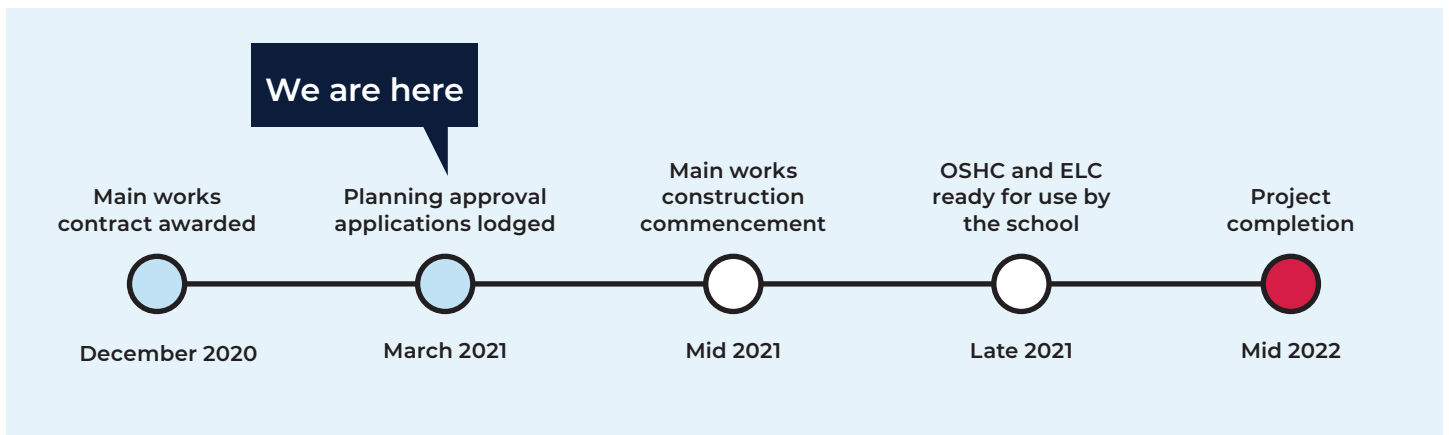


New student canteen delivered as part of early works

Project schedule

The timeline for completion of main works has been extended to cater for additional time needed to achieve planning approvals and meet the conditions of consent. It is anticipated that the upgrade of Tweed Heads South Public School will now be completed by mid 2022.

To ensure the school gains the benefits of new facilities as soon as possible, the upgrade will be delivered progressively. In addition to the early works already delivered, further new facilities will be ready for use by the school in late 2021, with the remainder being ready for use throughout 2022.



Construction approach

The upgrade to Tweed Heads South Public School is being delivered progressively so that the school can remain operational at the current site during construction and so facilities can be made available to the school as soon as possible.

2020

Early works. Completed in October 2020 and in use by the school:

- New school entry
- New entry gates, fences and footpaths and associated landscaping
- New canteen and storage

2021

Ready for use by the school in late 2021:

- New out of school hours care (OSHC) facilities including an office, store and kitchenette
- Extended and refurbished early learning centre (ELC)
- New grounds assistant's shed

2022

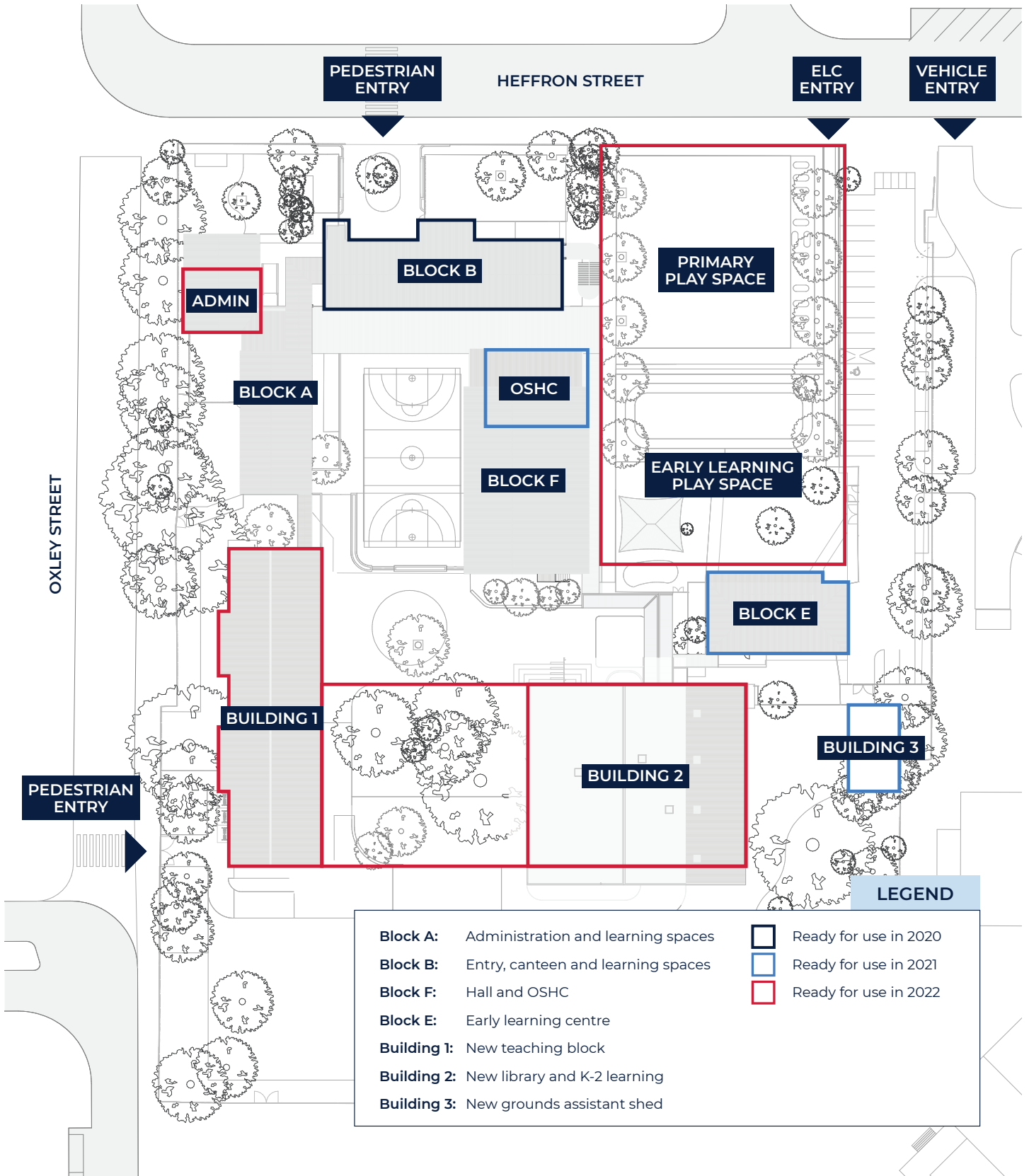
Ready for use by the school in mid 2022:

- Refurbished administration spaces
- New classroom building (Building 1)
- New library and K-2 learning (Building 2)
- Landscaping including new open grassed and landscaped play area

Site plan

The site plan below shows all the development proposed at the site as well as the indicative construction timing. It reflects the designs that will be submitted as part of the development application.

The design of the upgrade reorganises the school around a central courtyard and the new entry which brings people directly into this 'heart of the school'. All new buildings are raised above flood levels.



Scope of work

The scope of work for the upgrade includes construction of two brand new, architecturally designed buildings in addition to the refurbishment of administration spaces and the early learning centre.

Building 1 will be a brand new teaching block providing:

- Eight new permanent, innovative learning spaces include practical activity areas
- New bathrooms
- Covered walkways.

Building 2 will include the new school library and K-2 learning spaces, connected by a covered outdoor learning space. It will include:

- New library
- Three new permanent, innovative learning spaces with practical activity areas
- A covered outdoor learning area
- New bathrooms
- A special programs room.



Artist impression of Building 1



Artist impression of Building 2

Refurbishment

The scope of refurbishment work will include:

- Internal refurbishment of existing administration spaces on the ground floor of **Block A**
- Internal extension and refurbishment of the early learning centre (**Block E**)
- New OSHC facilities and accessibility ramps will be added to the forecourt of the hall (**Block F**).

Demolition

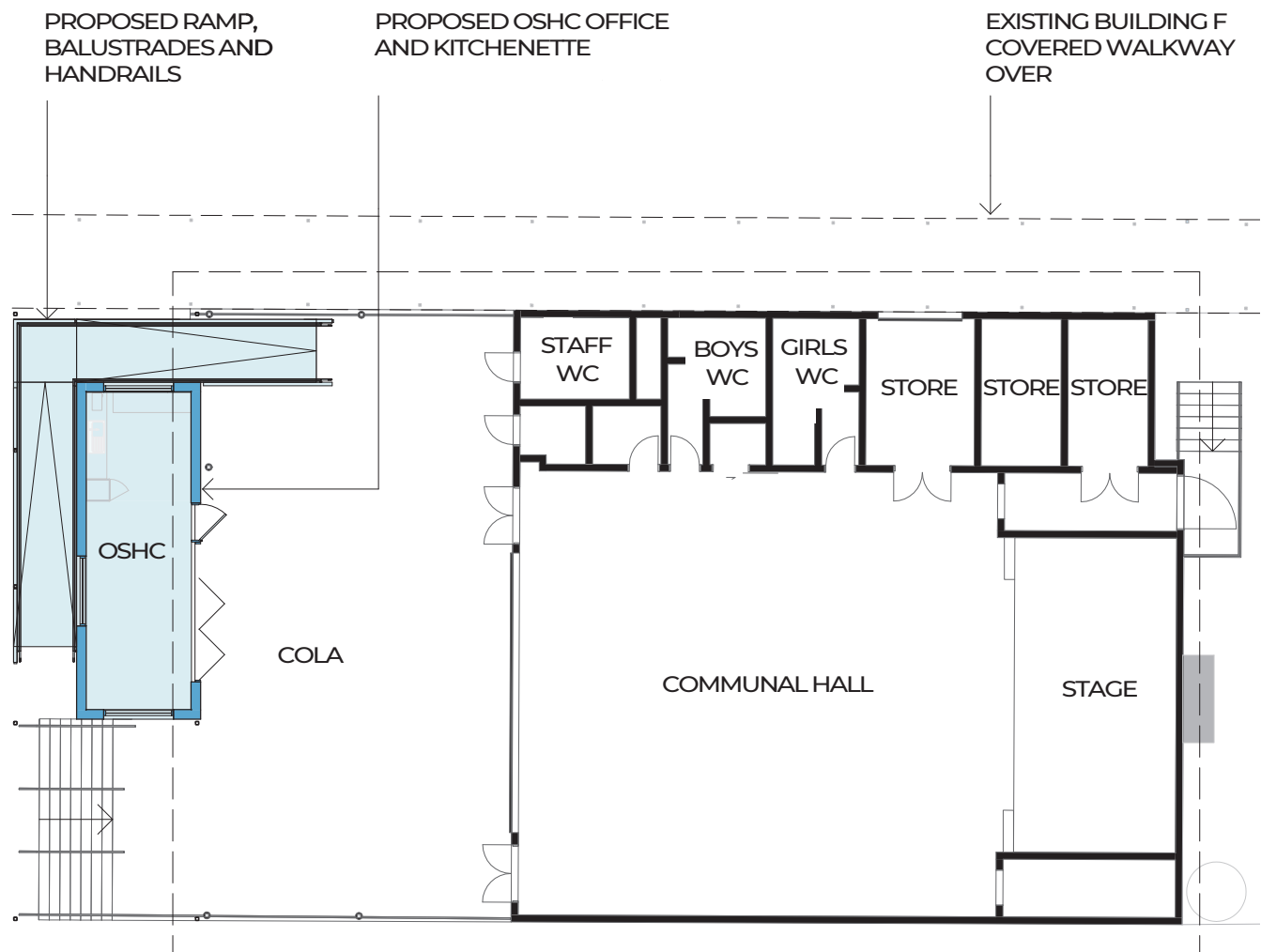
Blocks C and D and the old out of school hours care building will be demolished to enable the upgrade.

Out of School Hours Care facilities

One of the issues that was considered during the schematic design process, was the best location for the out of school hours care (OSHC) facilities.

Advice from the department's Educational Facilities Standards and Guidelines team was that it would be best to locate the OSHC close to the school hall. An early proposal to place the OSHC on the existing concrete platform outside the hall raised some concerns around reducing space under the COLA, which is an important gathering space for the school.

The final design has situated the OSHC office and storeroom adjacent to the concrete platform, where the hall access ramp is now. The OSHC will open up to the COLA area and a new, compliant ramp will wrap around the OSHC. This design change has improved sight lines to the OSHC office from the school entry.



Landscaping

The upgrade will deliver improvements to outdoor spaces.

Existing trees, lawn and garden areas will be retained and protected wherever possible. New plants will be added along the front boundary of the school and new gardens will be added.

The area that will be created by the demolition of Blocks C and D will be converted to open grassed play area surrounded by trees. The area will include vegetable gardens and fruit trees.

Transport



46%

of students live within a 15 minute walk of the school



83%

of students live within a 15 minute ride of the school



58%

of students travel to school by private car

The NSW Department of Education is committed to playing its part in keeping roads and footpaths around our schools safe. This is a responsibility that is shared between the department, local councils, schools, parents and students, law enforcement, transport providers and Transport for NSW.

As part of the Tweed Heads South School upgrade we have been working with a transport consultant to understand how students and teachers travel to and from school and what impact the upgrade will have on vehicle movements.

School transport plan

We have prepared a School Transport Plan (STP) which sets out the strategies to deliver efficient, safe and sustainable access to school during the planning and delivery of the project and operation of the school. The STP is lodged with the DA but is a live document that will continue to evolve as we continue working with the school and stakeholders.

Proposed transport infrastructure

With many students living within walking, cycling or scooting distance of the school, the upgrade will deliver a new bike parking area and scooter and skateboard storage to encourage more active journeys to and from school.

The development application for the project also proposes that vehicle access from Heffron Street to Oxley Street be closed off and a new pedestrian crossing be added close to the main school entry to improve road and pedestrian safety.

Next steps

Design

The newly appointed building contractor is working through a process to become familiarised with the project. The contractor will then work with the school to finalise the detailed design for the upgrade. This includes selection of fixtures, fittings and furniture.

Construction

We are currently working with the building contractor to prepare for the commencement of construction. This involves reviewing and agreeing the construction management and traffic management plans and identifying and putting in place strategies to manage any risks.

Construction is expected to commence in mid 2021, subject to the necessary planning approvals, and the first step will be site establishment, followed by demolition of the old, unused OSHC building.

Frequently asked questions

Where is development application for the project up to?

The Development Application (DA) for the project will be lodged this month and will then be put on public exhibition by Tweed Shire Council. The DA will be published to the Council website so the community can review the documentation and make comments. Once the public exhibition period is complete, Council will review any comments received and make a determination on the application.

What is a Review of Environmental Factors?

In 2017 the NSW Government introduced a new education-based State Environmental Planning Policy (SEPP) that aims to make it easier to provide new and upgraded education facilities for communities. Under the SEPP some development works can be carried out without development consent from council.

For the Tweed Heads Public School upgrade, the allowable works include construction of the new library building and new out of school hours care facilities, as well as extension and refurbishment of the early learning centre. To ensure the school benefits from new facilities as soon as possible, we are planning to progress these works while the DA is being assessed.

Before commencing the works we need to undertake a Review of Environmental Factors (REF) to determine whether there will be any potential impacts on the environment. As part of the REF process, we issue a letter to neighboring residents and stakeholders, providing them with details of the proposed work and contact details for feedback or further information.

What was the outcome of the Aboriginal Cultural Heritage Assessment at the school?

In February 2021 we conducted a series of test excavations at the school as part of our Aboriginal Cultural Heritage Assessment (ACHA) for the project. The test excavations were undertaken by archaeologists with monitoring by representatives of the local Aboriginal community. Preliminary findings indicate that no objects of cultural interest were found during the excavations, however this will be confirmed once laboratory analysis is completed. We will continue keep representatives of the local Aboriginal community updated on progress as the project proceeds.

Where will staff car parking be?

The existing staff car park will be retained, however access to the car park will be via a new vehicle entry that will be shared with Tweed River High School. Cars will enter from Heffron Street, drive down along the school boundary and enter via a new vehicle crossover point behind the early learning centre.

When will construction commence?

Construction is expected to commence in mid 2021, subject to the necessary planning approvals.

Stay informed

We are committed to working together with our school communities and other stakeholders to deliver the best possible learning facilities for students.

To stay up to date with opportunities for school communities to get involved in the project, visit the Tweed Heads South Public School project page on the School Infrastructure NSW website.

Your feedback is important to us. For more information, questions or to make a comment, please email us at schoolinfrastructure@det.nsw.edu.au.

Contact us



Website

Stay up to date by visiting the School Infrastructure NSW website schoolinfrastructure.nsw.gov.au



Email

Contact the Community Engagement team by emailing schoolinfrastructure@det.nsw.edu.au



Phone

Contact us between 9:00am and 5:00pm, Monday to Friday on **1300 482 651**