

# We're rebuilding Tumbulgum Public School

We're excited to be rebuilding Tumbulgum Public School for the local community after it was extensively damaged by floods in 2022.

The new school will be more flood resilient with all core facilities on a single raised level, connected by an undercover walkway and accessed by lifts and stairs.

The rebuilt school will include:

- |   |                               |   |  |
|---|-------------------------------|---|--|
|  | Modern classrooms             |  | Library and canteen  |
|  | Administration and staff area |  | Landscaping and undercover play area that are connected to Country |



## Tumbulgum Public School

For more information  
Phone: 1300 482 651  
Email: [schoolinfrastructure@det.nsw.edu.au](mailto:schoolinfrastructure@det.nsw.edu.au)  
Website: [schoolinfrastructure.nsw.gov.au](http://schoolinfrastructure.nsw.gov.au)





# A school with a sense of place

The proposed school design reflects the school's heritage, with cladding that mirrors the weatherboard and awnings of surrounding homes and local architecture.

The shadow design on the vertical batons on the stairwells mirrors the school logo and uniform, and the surrounding Tweed Range, including Wollumbin. Colours and finishes will be finalised as part of the next stage in the design process.

The school's distinctive boundary trees and canopy will be largely retained.



Artist's impression (subject to change) – front of the school from Bawden Street



Artist's impression (subject to change) – aerial view Tumbulgam Public School



## Tumbulgam Public School

**For more information**

**Phone:** 1300 482 651

**Email:** [schoolinfrastructure@det.nsw.edu.au](mailto:schoolinfrastructure@det.nsw.edu.au)

**Website:** [schoolinfrastructure.nsw.gov.au](http://schoolinfrastructure.nsw.gov.au)



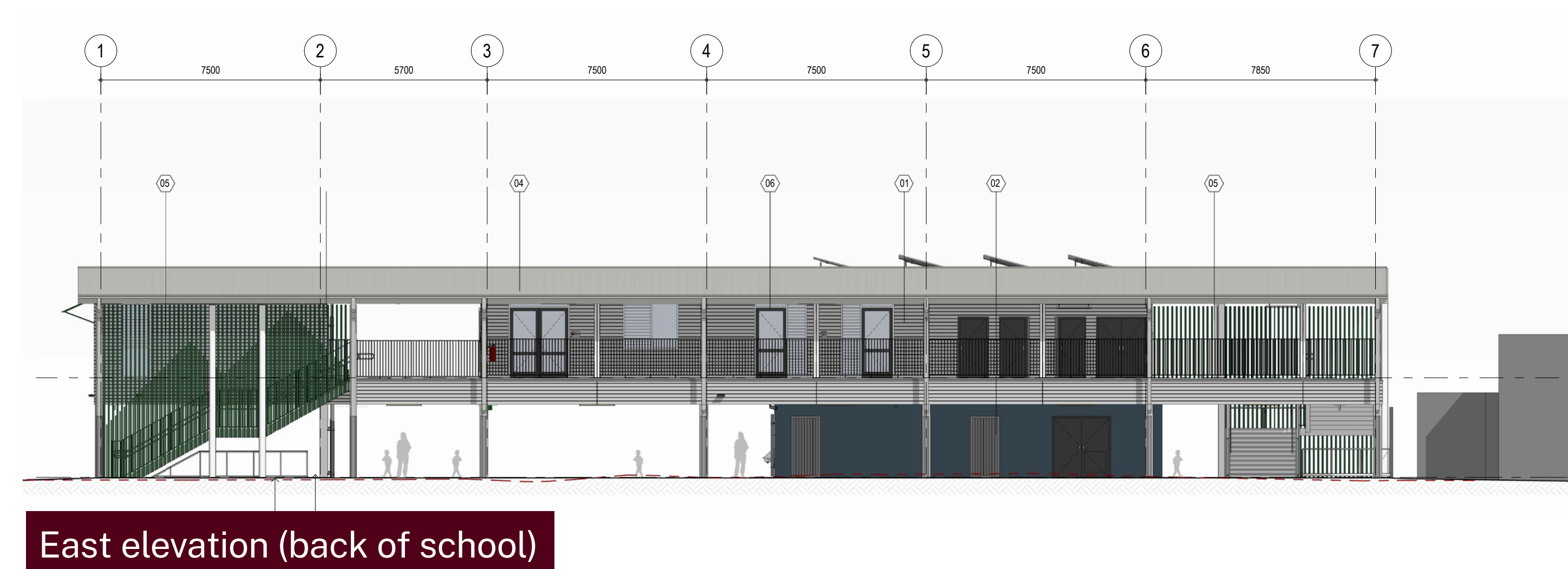
# Flood resilient design

The new flood resilient school design will allow Tumbulgum Public School students to return to their own school sooner in the event of any future flooding.

All buildings will be raised about 3.4 metres above the ground. This is higher than the 2022 flood level.

Buildings will be supported by steel columns and an engineered steel gantry that is rated to the Probable Maximum Flood (PMF) level.

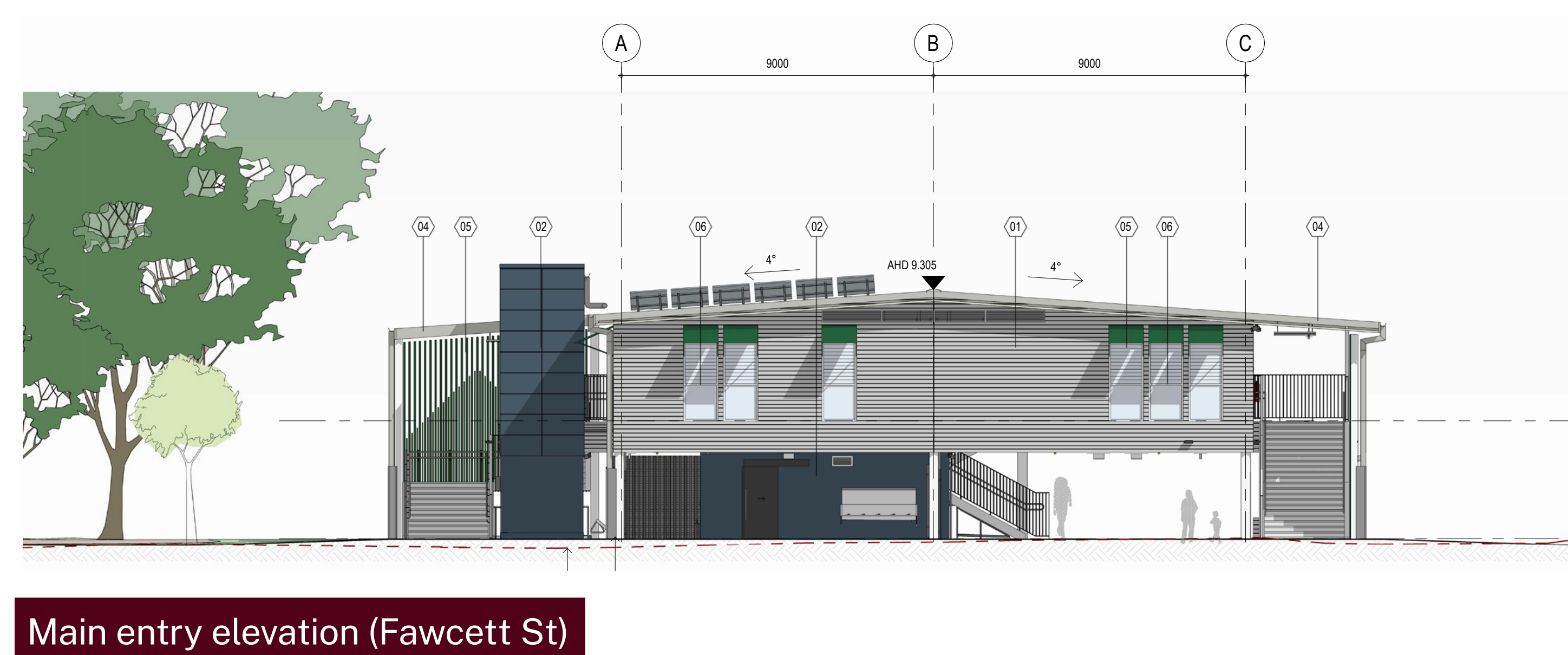
All core facilities, including classrooms, library and canteen will be on the first floor. The amenities and ground floor facilities will be made of flood resilient materials to ensure durability and longevity.



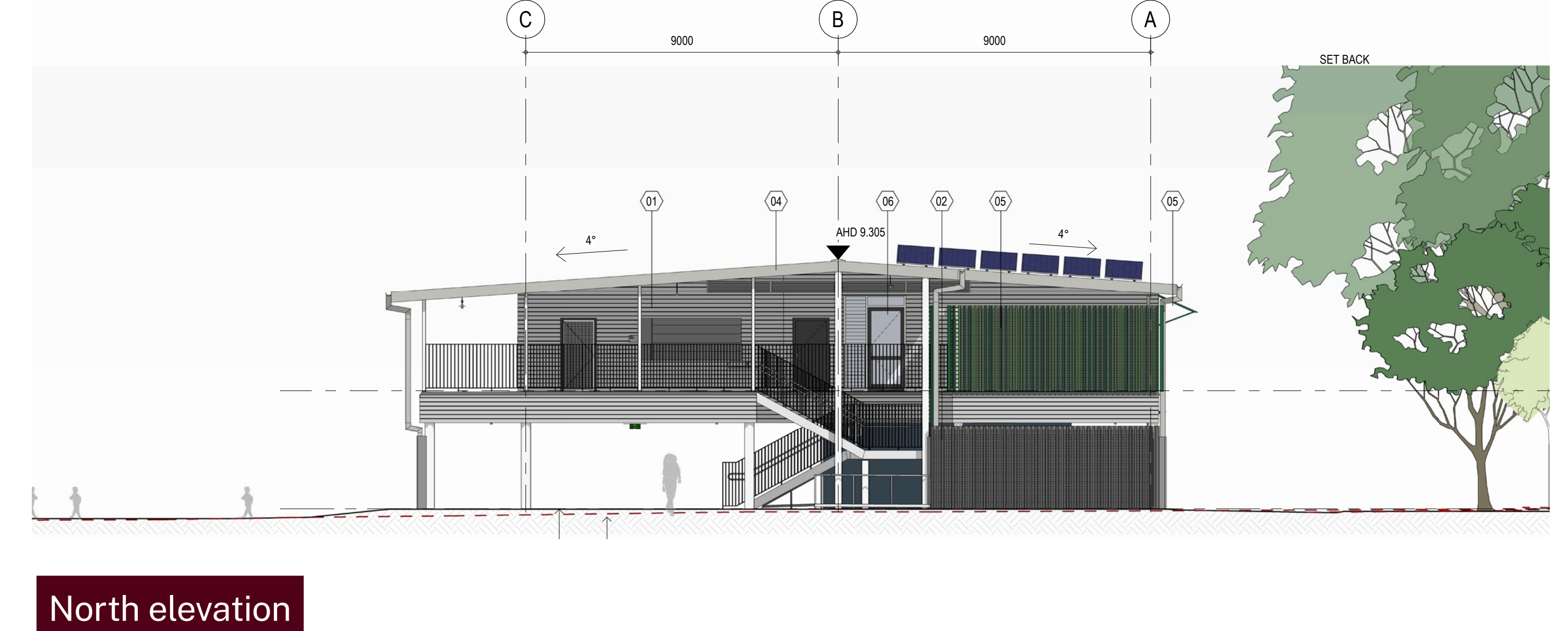
East elevation (back of school)



West elevation (from Bawden Street)



Main entry elevation (Fawcett St)



North elevation

## Tumbulgum Public School

**For more information**

**Phone:** 1300 482 651

**Email:** [schoolinfrastructure@det.nsw.edu.au](mailto:schoolinfrastructure@det.nsw.edu.au)

**Website:** [schoolinfrastructure.nsw.gov.au](http://schoolinfrastructure.nsw.gov.au)



# Site plan and temporary school

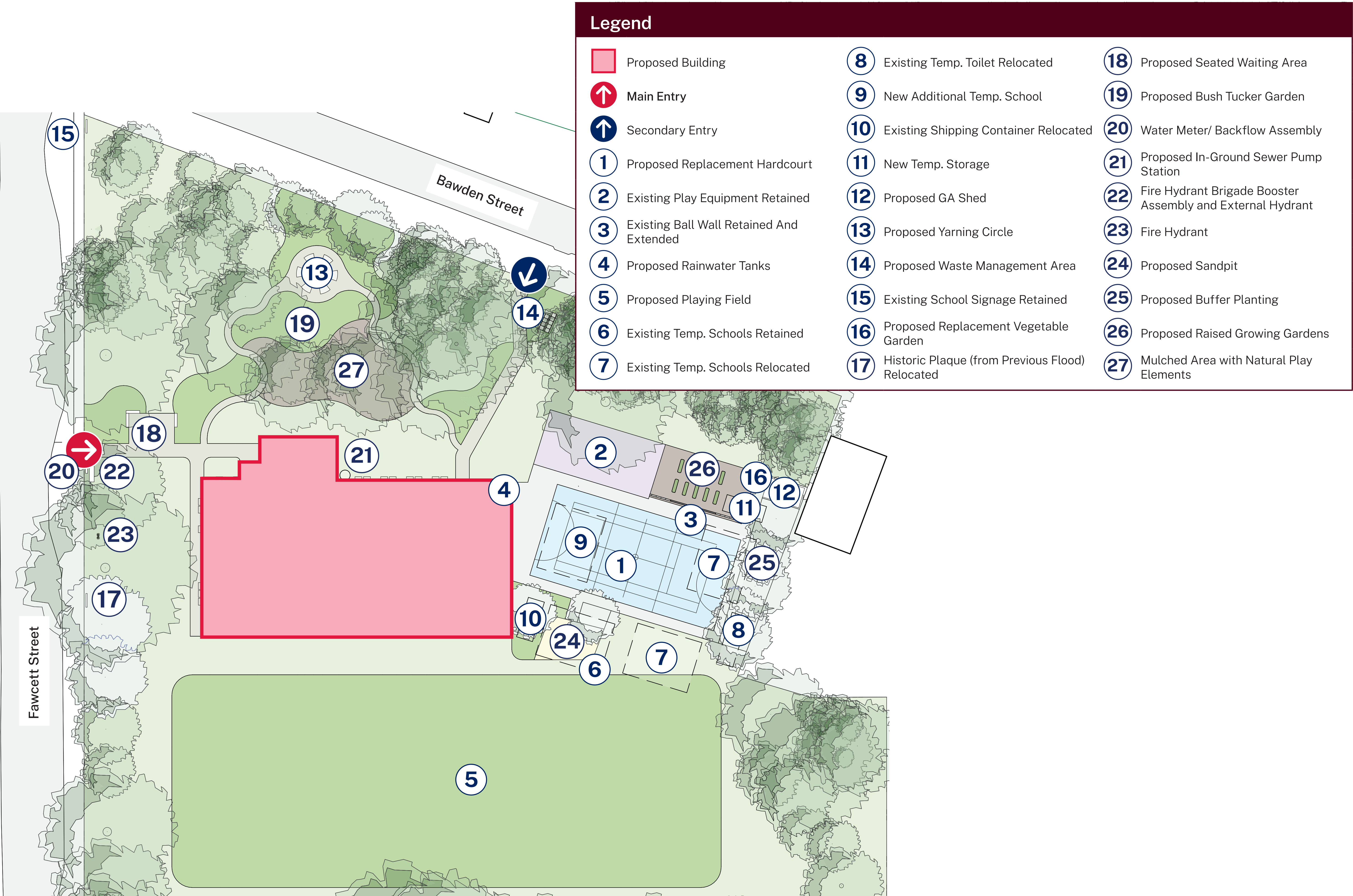
All buildings on the Tumbulgum Public School site will be replaced with a new school building on a single level. This will make the school more functional for students and staff and make the best possible use of the school site in the long term.

The new school building will be located towards the centre of the site, where the library and temporary buildings currently sit. This will maximise play space and visually open up the site, providing a light and open grounds for the school.

The main entry will be from Fawcett Street.

To allow for the construction of the new buildings, the temporary school will be relocated elsewhere on site

The relocation work will begin in December and be finished in time for the first day of school next year.



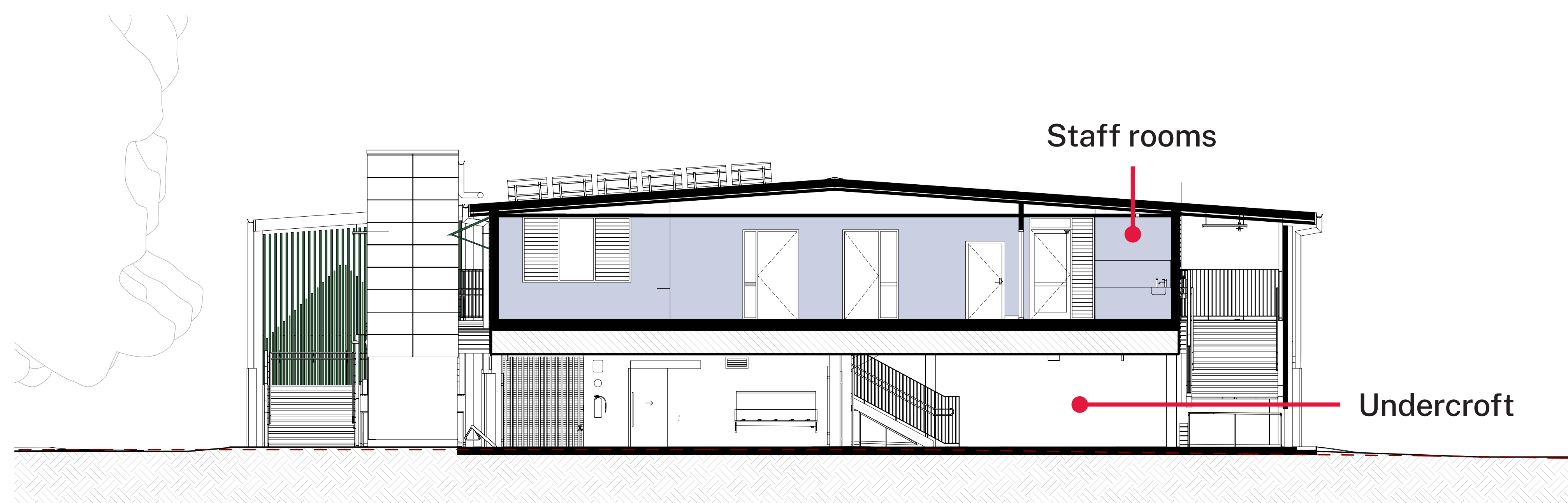
## Tumbulgum Public School

**For more information**  
**Phone:** 1300 482 651  
**Email:** [schoolinfrastructure@det.nsw.edu.au](mailto:schoolinfrastructure@det.nsw.edu.au)  
**Website:** [schoolinfrastructure.nsw.gov.au](http://schoolinfrastructure.nsw.gov.au)

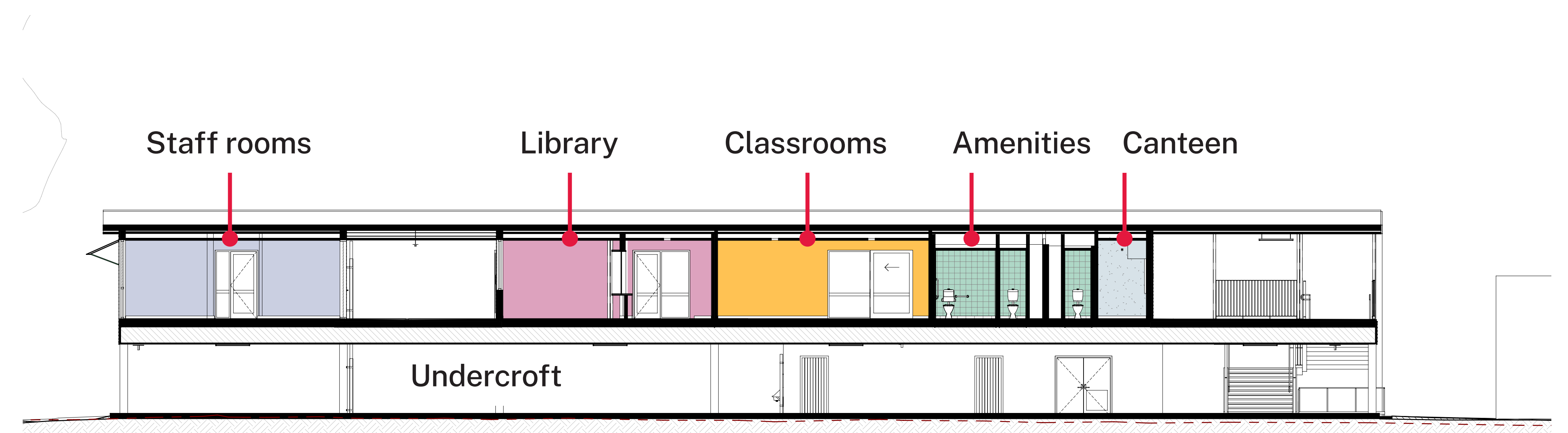




# Artist's impressions (subject to change) and sections



Section showing the school office and main entry off Fawcett Street (image above)



Section showing school spaces (image above)

## Tumbulgum Public School

For more information

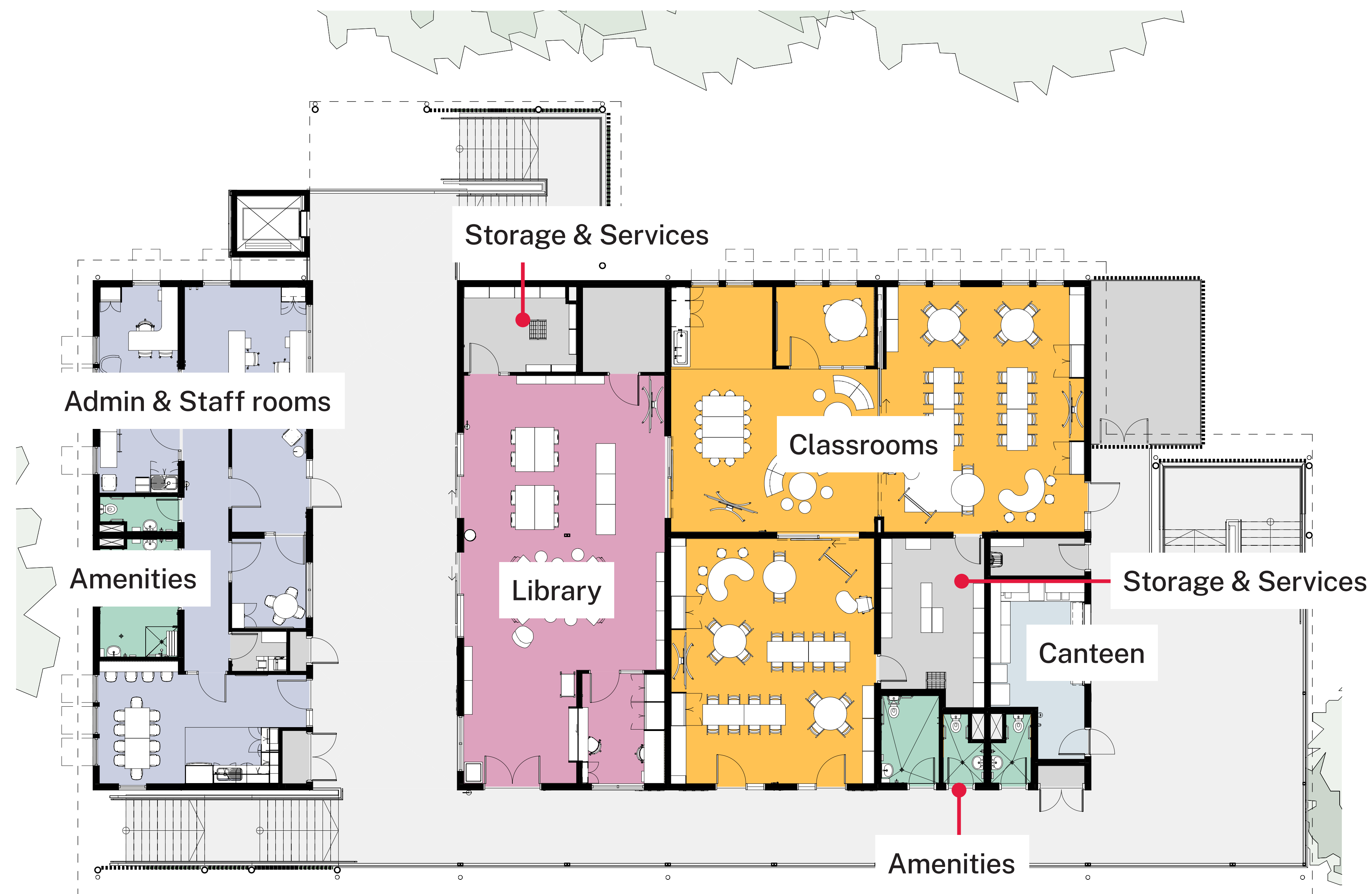
Phone: 1300 482 651

Email: [schoolinfrastructure@det.nsw.edu.au](mailto:schoolinfrastructure@det.nsw.edu.au)

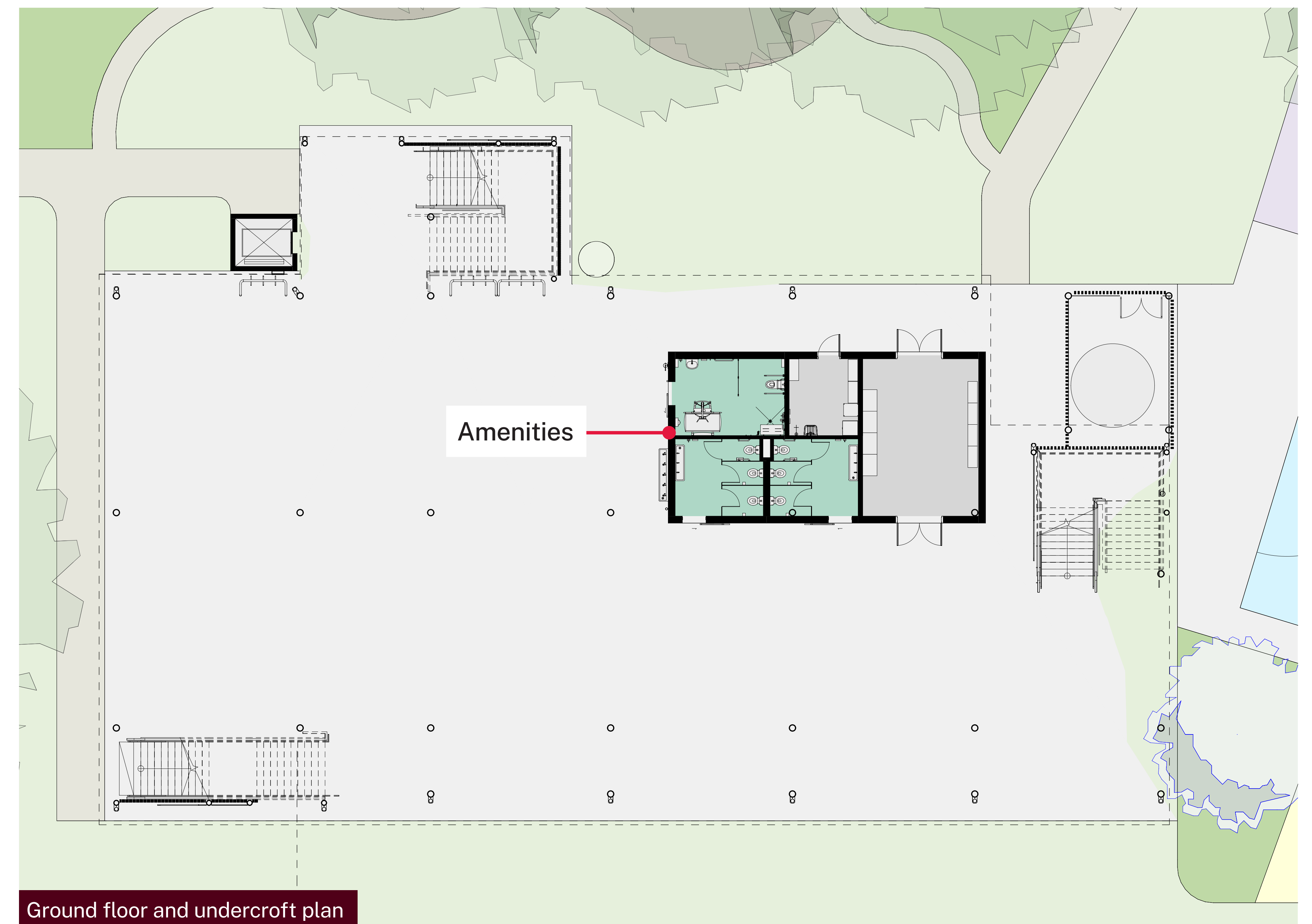
Website: [schoolinfrastructure.nsw.gov.au](http://schoolinfrastructure.nsw.gov.au)



# Modern school facilities



Classrooms, library and first floor spaces



Ground floor and undercroft plan

## Tumbulgum Public School

For more information

Phone: 1300 482 651

Email: [schoolinfrastructure@det.nsw.edu.au](mailto:schoolinfrastructure@det.nsw.edu.au)

Website: [schoolinfrastructure.nsw.gov.au](http://schoolinfrastructure.nsw.gov.au)

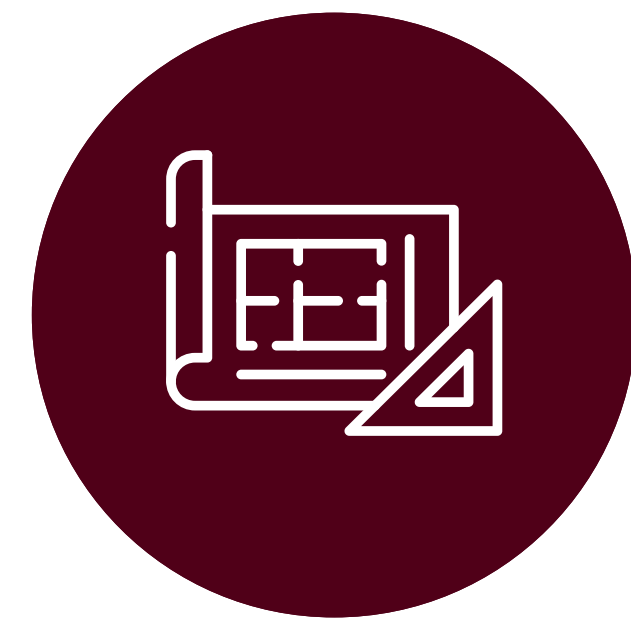


# Next steps

## 1. Design

We will work with the school through the Project Reference Group (PRG) to finalise finishes, fittings and landscaping.

Connecting with Country consultation will also be held with the local community and Tweed Wollumbin Aboriginal Education Consultative Group (AECG) to ensure that the school design and daily school operations reflect the cultural heritage of the Tumbulgum Public School site and local area.



## 2. Planning

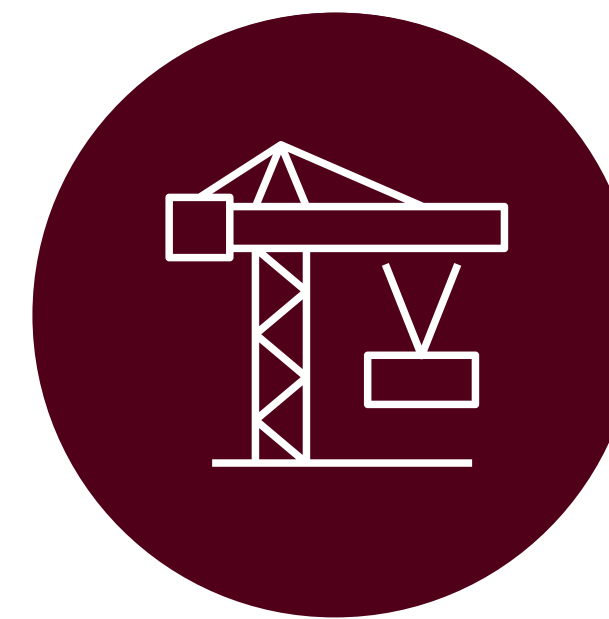
Once schematic designs and colour schemes are finalised, we will lodge a planning application to rebuild the school. Our planning application will be placed on public exhibition.



## 3. Construction

The first-floor buildings and steel gantry will be built off site and reassembled at Tumbulgum Public School. This means we will be able to rebuild to a very high standard and more efficiently.

Once we have planning approvals in place, we expect construction to take 6-7 months, weather permitting.



## Stay Informed

For more information about this project, contact School Infrastructure NSW:

Phone: 1300 482 651

Email: [schoolinfrastructure@det.nsw.edu.au](mailto:schoolinfrastructure@det.nsw.edu.au)

Website: [schoolinfrastructure.nsw.gov.au](https://schoolinfrastructure.nsw.gov.au)



## Tumbulgum Public School

For more information

Phone: 1300 482 651

Email: [schoolinfrastructure@det.nsw.edu.au](mailto:schoolinfrastructure@det.nsw.edu.au)

Website: [schoolinfrastructure.nsw.gov.au](https://schoolinfrastructure.nsw.gov.au)

