



180m

Crack damage to the kerb and gutter.





190m

General views of the road surface, kerb and gutter.





190m

General views of the road surface, kerb and gutter.





190m

General views of the road surface, kerb and gutter.





190m

Crack damage to the kerb and gutter.





190m

Crack damage to the kerb and gutter.



General views of the roundabout.





General views of the roundabout.





General views of the roundabout.





Views of the median strip, east of the roundabout.





Views of the median strip, east of the roundabout.





General views of the roundabout looking north.





General views of the roundabout looking north.





The following inspection is of the footpath, kerb and gutter along the south side of Aquatic Drive starting at the entrance driveway of Arranounbai School and heading in an easterly direction towards the roundabout.





0m

General views of the driveway crossover to Arranounbai School at the start point.







0m

General views of the driveway crossover to Arranounbai School at the start point.

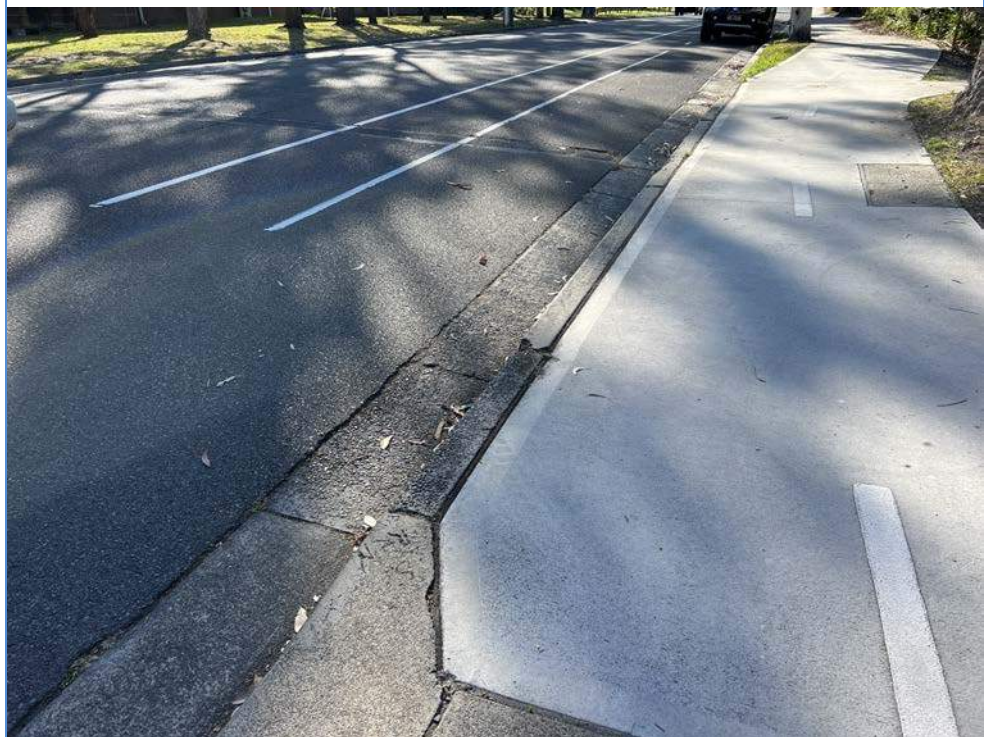






8m

General views of the footpath, kerb and gutter.







10m	<p>Crack damage to the kerb and gutter.</p> 
12m	<p>View of the inspection lids.</p> 





13m

Crack damage to the kerb and gutter.





16m

View of the inspection lid to the footpath.





20m

Multiple cracks and damage to the kerb and gutter.





20m

Multiple cracks and damage to the kerb and gutter.





20m

General views of the footpath, kerb and gutter.





26m

Views of the tree and street sign to the Council strip.





26m

Views of the tree and street sign to the Council strip.







30m

General views of the footpath, kerb and gutter.

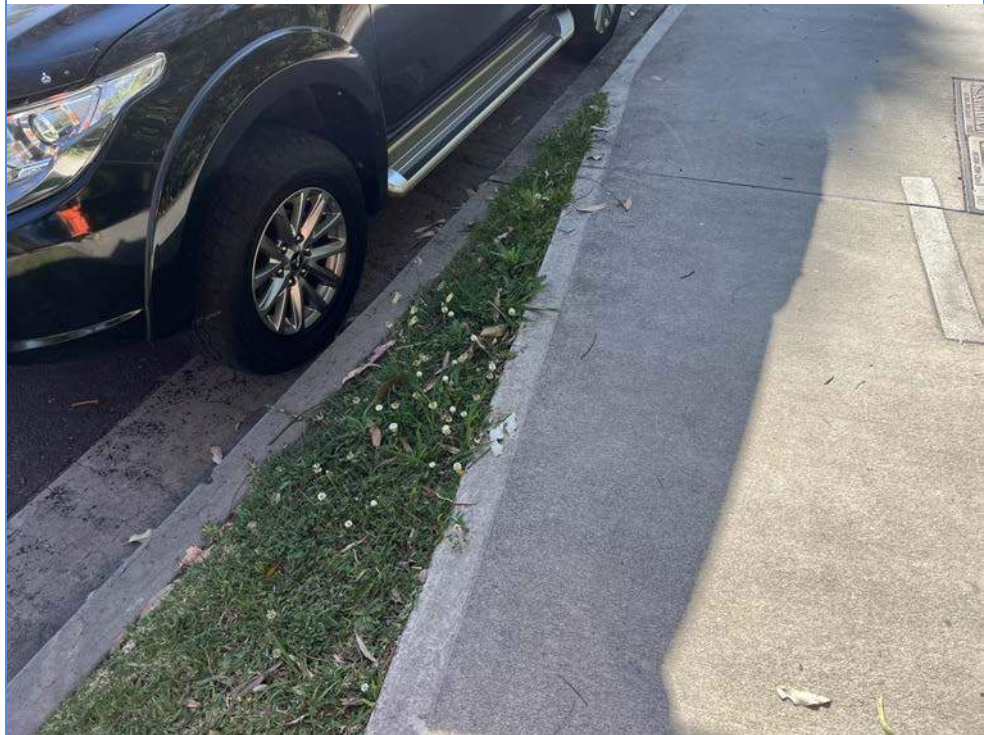






30m

General views of the footpath, kerb and gutter.





30m

Various cracks throughout the kerb and gutter.





<p>30m</p>	<p>Various cracks throughout the kerb and gutter.</p> 
<p>33m</p>	<p>View of the inspection lid to the footpath.</p> 





40m

General views of the footpath, kerb and gutter.







40m

Various cracks throughout the kerb and gutter.





40m

Various cracks throughout the kerb and gutter.





45m

Views of the telegraph pole and tree to the Council strip.





45m

Views of the telegraph pole and tree to the Council strip.





45m

General views of the footpath, kerb and gutter.





50m

General views of the footpath, kerb and gutter.







50m

General views of the footpath, kerb and gutter.







50m

Various cracks to the kerb and gutter.







50m

Various cracks to the kerb and gutter.





60m

Views of the trees to the Council strip.

