

5m	<p>View of the footpath looking north.</p> 
10m	<p>View of the footpath looking north.</p> 

12m	<p>View of the street sign.</p>  A photograph showing a view of a street sign on a residential street. The sign is a white rectangular sign with a black border, mounted on a metal pole. The street is paved with asphalt and has a concrete sidewalk on the left. There are trees and houses in the background under a clear blue sky.
15m	<p>View of the footpath looking north.</p>  A photograph showing a view of a footpath looking north. The footpath is paved with concrete and has a white line marking. To the left of the footpath is a parking area with a white line marking. To the right of the footpath is a road with a white line marking. There are trees and houses in the background under a clear blue sky.

Views of the driveway crossover and layback servicing 187 Allambie Road, Allambie Heights.





Views of the driveway crossover and layback servicing 187 Allambie Road, Allambie Heights.





28m

Crack damage noted to the footpath.





30m

Views of the driveway crossover showing crack damage and potholes throughout.





30m

Views of the driveway crossover showing crack damage and potholes throughout.





30m

Views of the driveway crossover showing crack damage and potholes throughout.



30m

Views of the driveway crossover showing crack damage and potholes throughout.



40m

View of the footpath looking north.



45m	<p>View of the footpath looking north.</p> 
50m	<p>View of the footpath looking north.</p> 

52m

Views of the street signs.



52m	<p>Views of the street signs.</p> 
55m	<p>View of the footpath looking north.</p> 



60m

View of the footpath looking north.



65m

View of the inspection lid.



70m	<p>View of the footpath looking north.</p>  A photograph showing a concrete footpath running alongside a road. To the left of the footpath is a grassy area with a white banner that has the NSW Government logo. The road is on the right, and the view is looking north.
75m	<p>View of the footpath looking north.</p>  A photograph showing the same concrete footpath from a slightly further distance. The white banner with the NSW Government logo is still visible on the left. The road is on the right, and the view is looking north. There are some yellow and blue markings on the footpath in the foreground.

80m	<p>View of the footpath looking north.</p>  A photograph showing a concrete footpath extending north. To the left is a grassy verge with a white banner that reads 'NSW GOVERNMENT'. To the right is a paved road with several cars. The footpath has a blue line painted on it.
85m	<p>View of the footpath looking north.</p>  A photograph showing the same concrete footpath from a slightly further distance. The 'NSW GOVERNMENT' banner is still visible on the left. The footpath has a blue line and some white markings painted on it. A car is visible on the road to the right.



90m

View of the footpath looking north.



95m

View of the footpath looking north.



95m

Views of the street sign.



100m	<p>View of the footpath looking north.</p>  A photograph showing a concrete footpath extending into the distance. To the left is a white construction barrier with 'NSW GOVERNMENT' logos. To the right is a paved road. A utility pole stands on the right side of the path.
105m	<p>View of the footpath looking north.</p>  A photograph showing the same footpath from a slightly further distance. The concrete slabs and the white barrier are visible. A utility pole is on the right, casting a shadow on the path. Blue and white painted markings are visible on the concrete in the foreground.

Views of the footpath looking south from the end point.



The following inspection is of the road surface, kerb and gutter to the west side of Allambie Road starting at Arnhem Road and finishing at Sunlea Place, Allambie Heights.





0m

General views of the road surface, kerb and gutter at the start point.





0m

Various cracks noted to the kerb and gutter at the start point.



10m

General views of the road surface, kerb and gutter.



10m

General views of the road surface, kerb and gutter.



10m

General views of the road surface, kerb and gutter.



10m

Crack damage to the kerb and gutter.





20m

General views of the road surface, kerb and gutter.



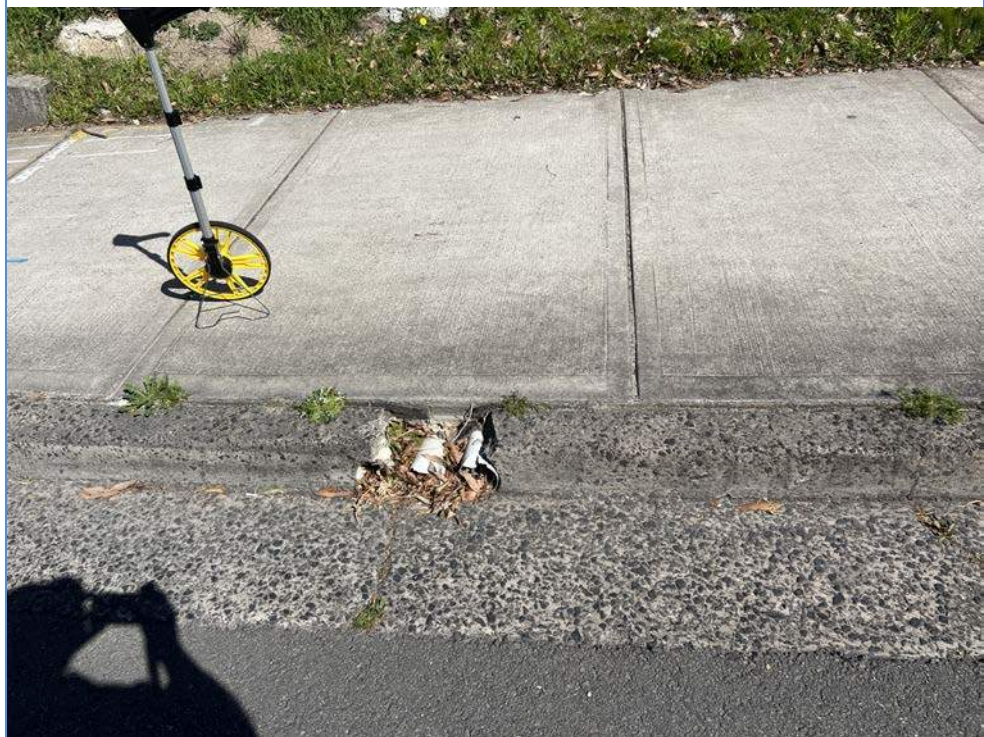
20m

General views of the road surface, kerb and gutter.



20m

Various cracks to the kerb and gutter.



20m

Various cracks to the kerb and gutter.



30m

General views of the road surface, kerb and gutter.



30m

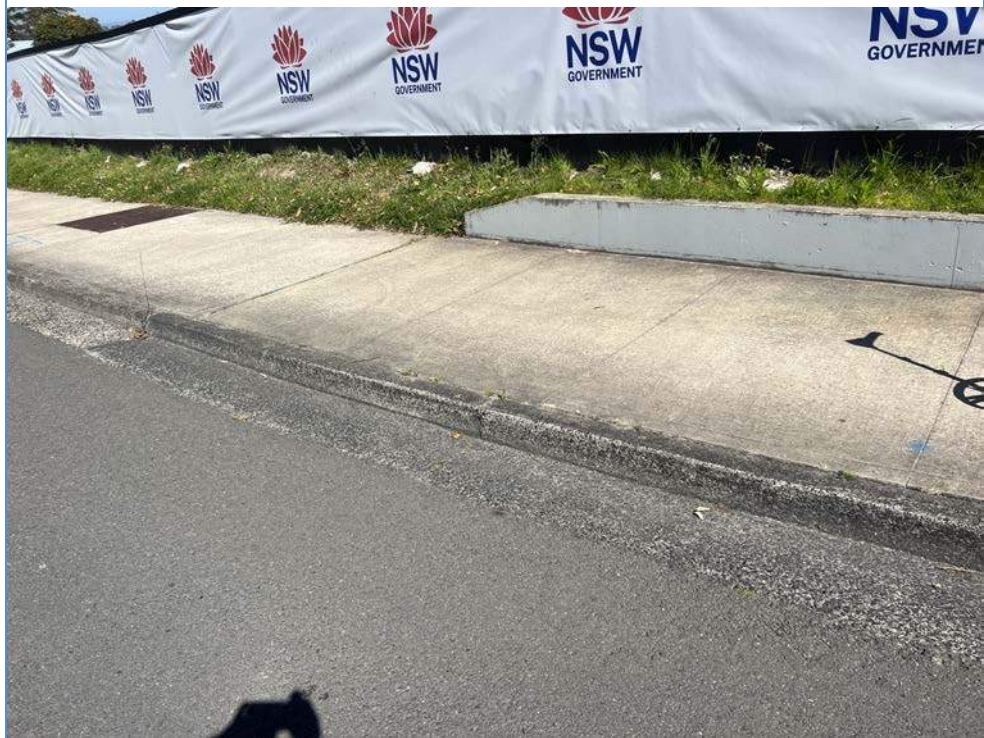
General views of the road surface, kerb and gutter.





30m

General views of the road surface, kerb and gutter.



30m

General views of the road surface, kerb and gutter.



30m

Crack damage to the kerb and gutter.



30m

Crack damage to the kerb and gutter.



40m

General views of the road surface, kerb and gutter.



40m

General views of the road surface, kerb and gutter.



40m

General views of the road surface, kerb and gutter.

