

**Childs Property Inspections Pty Ltd**

NSW, QLD, ACT, VIC, SA, WA ABN 69 079 197 032

childspropertyinspections.com.au

info@childsproperty.com.au

1300 760 325

# Public Infrastructure Condition Survey

(PRE-CONSTRUCTION REPORT)

IN ACCORDANCE WITH AS 4349.0-2007

## The Forest High School Education Precinct

Client:

**ADCO CONSTRUCTIONS PTY LTD**

Property Inspected:

**PUBLIC INFRASTRUCTURE TO  
ALLAMBIE ROAD, ALLAMBIE HEIGHTS AND  
AQUATIC DRIVE, FRENCHS FOREST**

Inspection Date & Time:

**6 SEPTEMBER 2023  
19 SEPTEMBER 2023**

Agreement Number:

**N/A**

Report Number:

**2509037D**



**Master  
Builders  
Association**  
New South Wales

•Experienced •Knowledgeable •Reliable



## TABLE OF CONTENTS

- A. Scope of Inspection
- B. Areas Inspected
- C. Notable Items

## SCOPE OF INSPECTION

Childs Property Inspections was commissioned by ADCO Constructions Pty Limited to carry out a Public Infrastructure Condition/Dilapidation Survey.

The purpose of this inspection is to provide a report on the current condition of the Public Infrastructure prior to construction commencing on neighbouring areas.

## AREAS INSPECTED

The area inspected consists of all public infrastructure fronting the site shown highlighted in yellow in the aerial view below.

Items inspected include:

- Road surface
- Kerbs
- Gutters
- Paths
- Plantings
- street signs
- power poles
- Drainage pits (Inspected from surface only)



## NOTABLE ITEMS

For practical reasons two photos generally are positioned on each page of this dilapidation report. Defects such as small cracks may not be easily seen in some of the photos depending on the size of the computer they are viewed on.

All photos are kept on file by Childs Property Inspections and individual photo files can be viewed and increased in size to show more detail at a later date if required.

All individual photo files are dated and numbered in the meta data file.

### Notable Items – Section 1

#### Intersection of Arnhem Road and Allambie Road:

The following inspection is of the public infrastructure at the intersection of Arnhem Road and Allambie Road, Allambie Heights.





General views of the intersection of Arnhem Road and Allambie Road, Allambie Heights.





General views of the intersection of Arnhem Road and Allambie Road, Allambie Heights.







General views of the road surface of Arnhem Road, Allambie Heights.



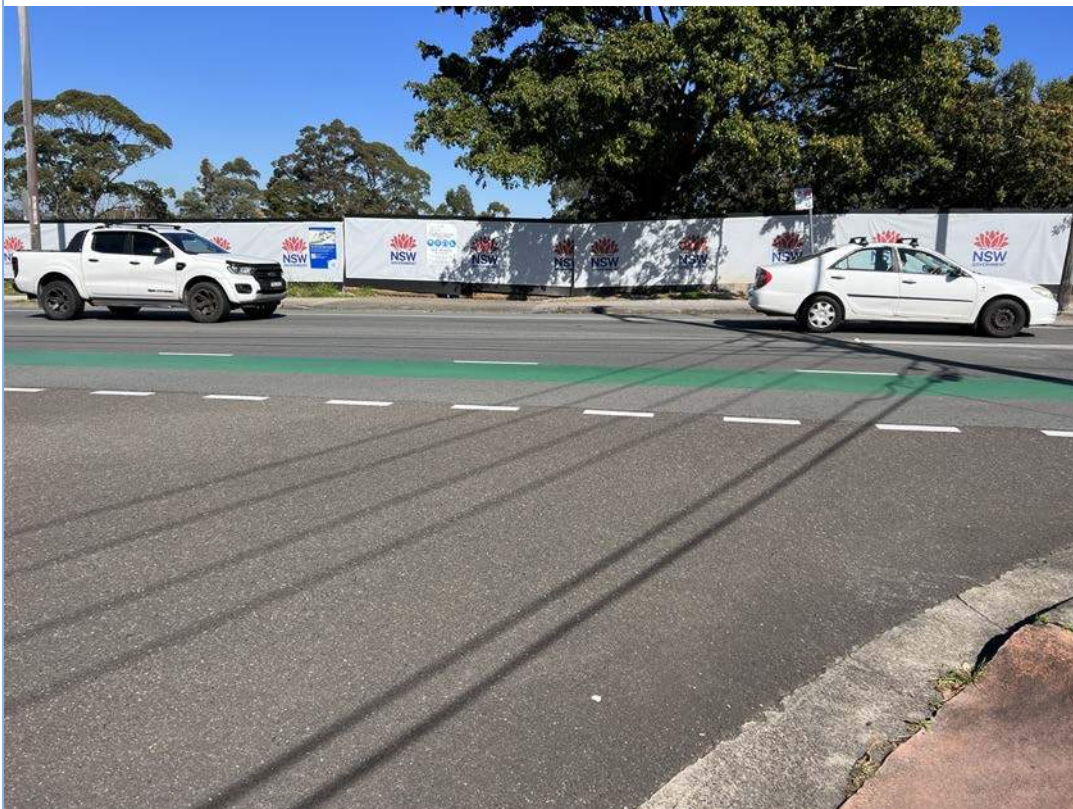


General views of the road surface of Arnhem Road, Allambie Heights.

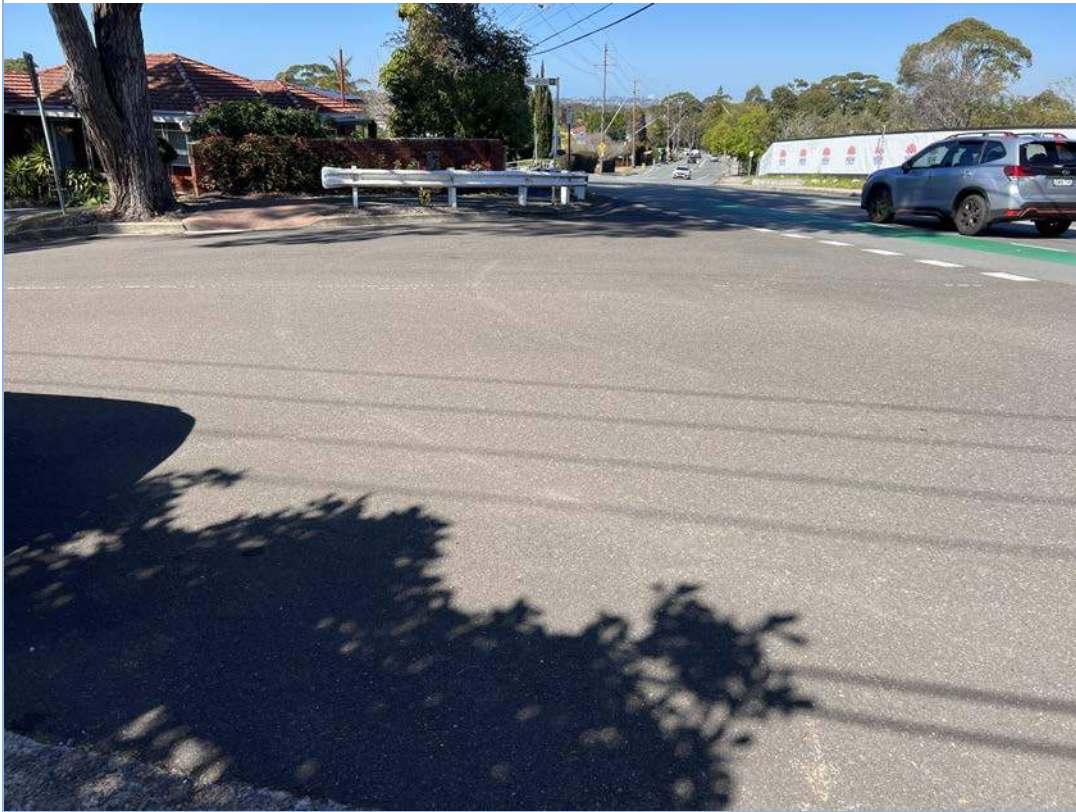




General views of the road surface of Arnhem Road, Allambie Heights.



General views of the road surface of Arnhem Road, Allambie Heights.





Crack damage throughout the kerb and gutter to the north side of Arnhem Road, Allambie Heights.



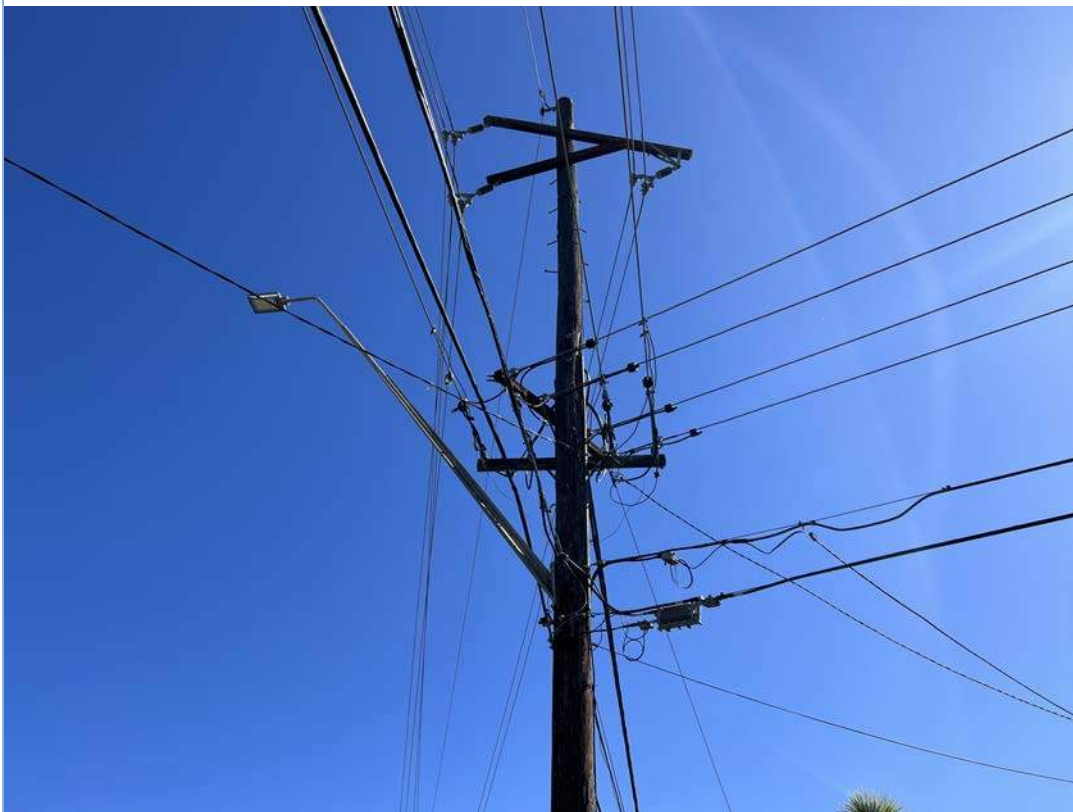


Crack damage throughout the kerb and gutter to the north side of Arnhem Road, Allambie Heights.





Views of the telegraph pole at the intersection of Arnhem Road and Allambie Road, Allambie Heights.





Kerb and gutter showing crack damage and lifting of the expansion joints of Arnhem Road, south side.





Kerb and gutter showing crack damage and lifting of the expansion joints of Arnhem Road, south side.





Road surface showing crack damage and lifting at the south side of Arnhem Road, Allambie Heights.





Views of the guard rail at the south side of Arnhem Road, Allambie Heights.





General views of the road surface of Allambie Road at the intersection of Arnhem Road, Allambie Heights.





General views of the road surface of Allambie Road at the intersection of Arnheim Road, Allambie Heights.





General views of the road surface of Allambie Road at the intersection of Arnhem Road, Allambie Heights.





Crocodile cracking and subsidence to the road surface at the intersection of Arnhem Road and Allambie Road, Allambie Heights.





Crocodile cracking and subsidence to the road surface at the intersection of Arnhem Road and Allambie Road, Allambie Heights.







Crocodile cracking and subsidence to the road surface at the intersection of Arnhem Road and Allambie Road, Allambie Heights.





Views of the road surface of Allambie Road at the intersection of Arnheim Road, Allambie Heights.





Views of the road surface of Allambie Road at the intersection of Arnhem Road, Allambie Heights.





Views of the footpath on the west side of the intersection of Arnhem Road and Allambie Road, Allambie Heights.



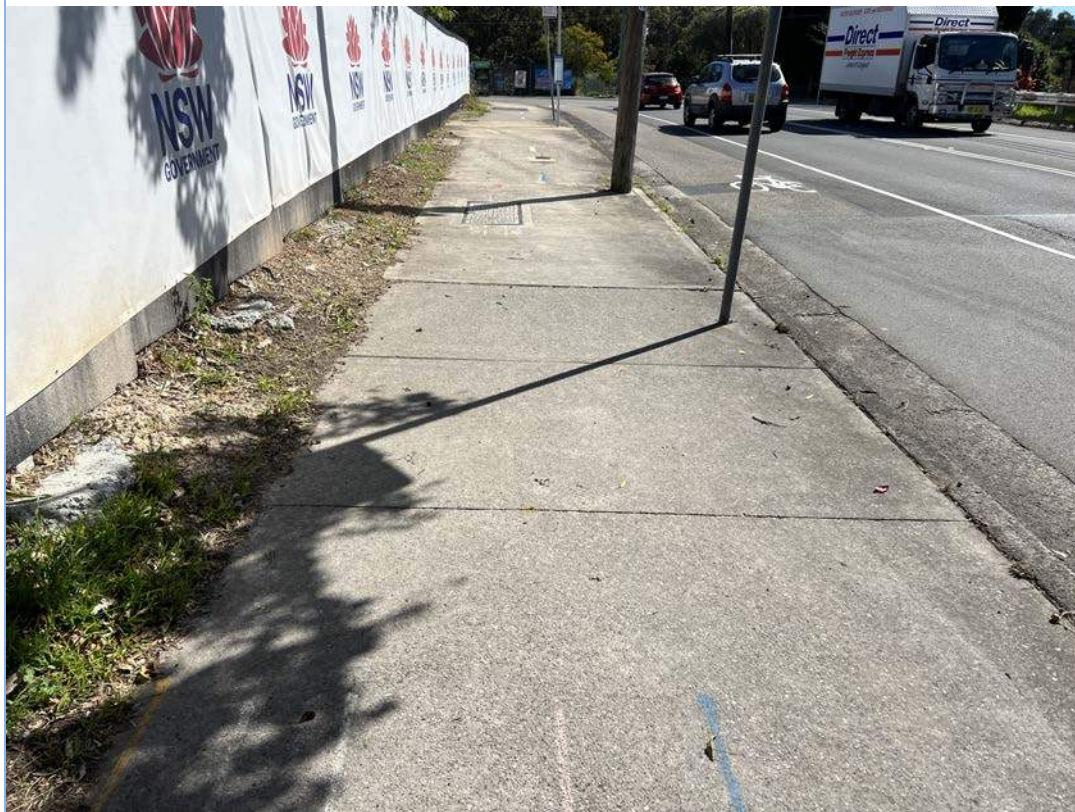


Views of the footpath on the west side of the intersection of Arnhem Road and Allambie Road, Allambie Heights.





Views of the footpath on the west side of the intersection of Arnhem Road and Allambie Road, Allambie Heights.





Views of the footpath on the west side of the intersection of Arnhem Road and Allambie Road, Allambie Heights.





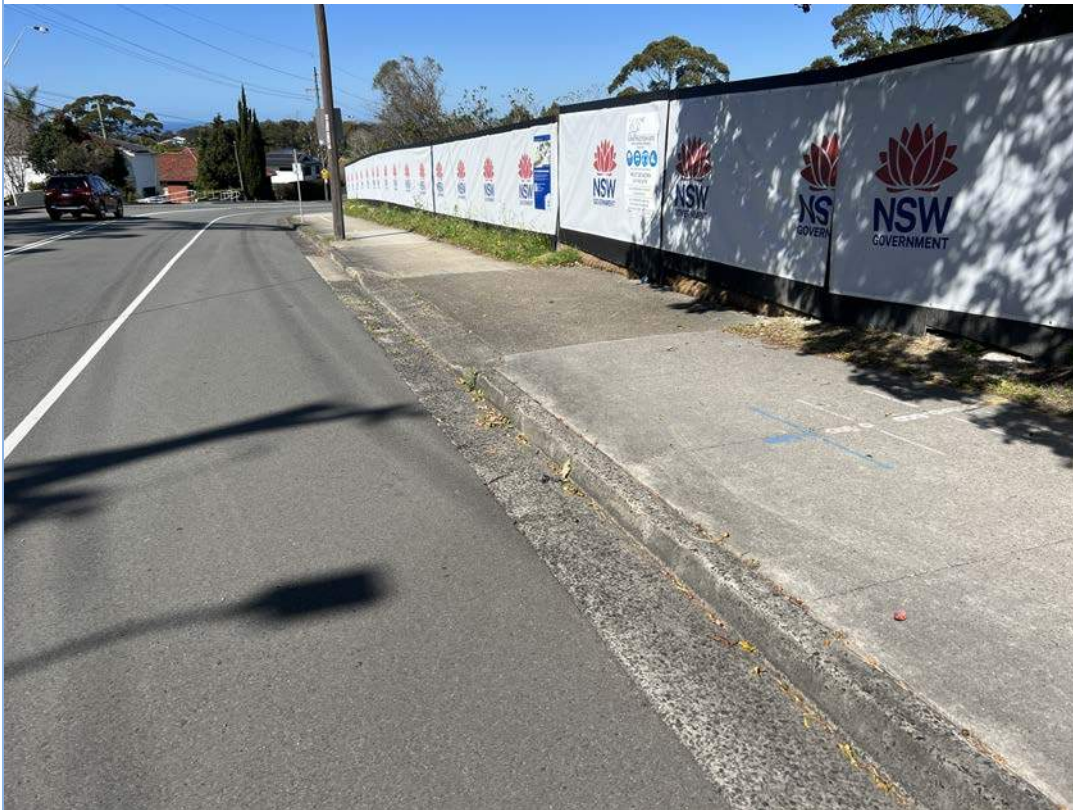


Kerb, gutter, driveway and layback showing multiple cracks on the west side of the intersection of Arnhem Road and Allambie Road, Allambie Heights.





Kerb, gutter, driveway and layback showing multiple cracks on the west side of the intersection of Arnhem Road and Allambie Road, Allambie Heights.







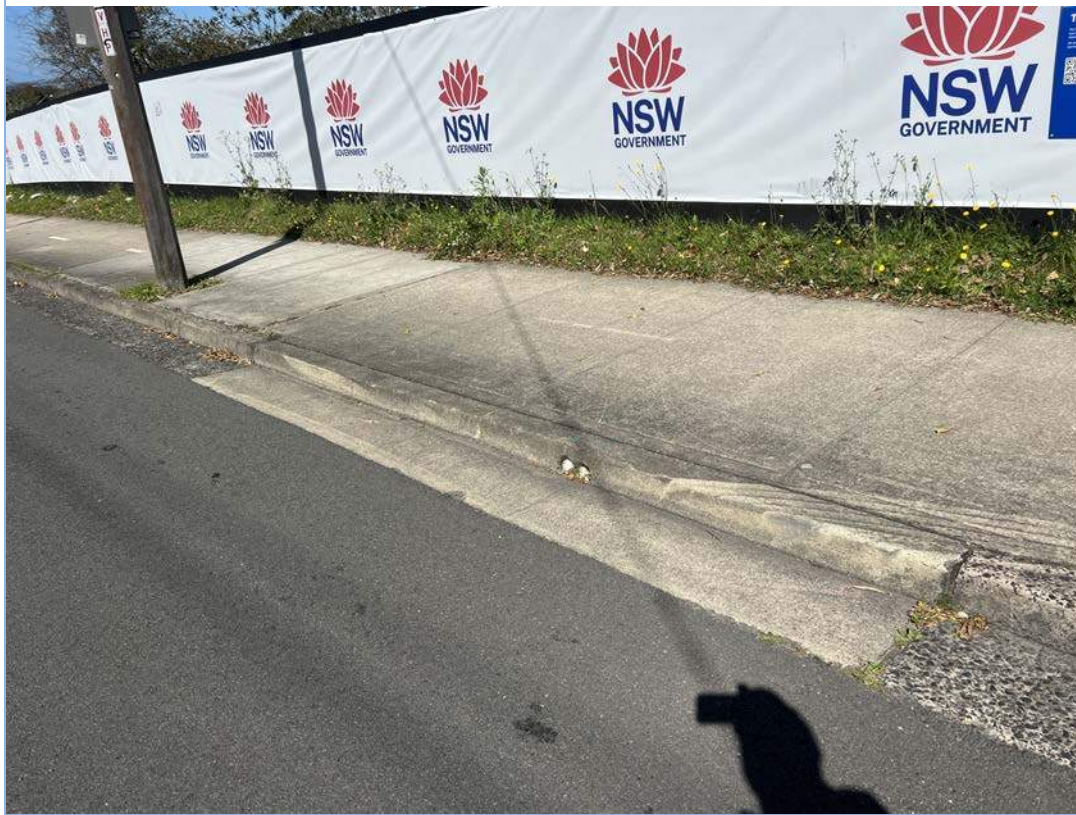
Kerb, gutter, driveway and layback showing multiple cracks on the west side of the intersection of Arnhem Road and Allambie Road, Allambie Heights.







Kerb, gutter, driveway and layback showing multiple cracks on the west side of the intersection of Arnhem Road and Allambie Road, Allambie Heights.





Views of the streetlight on the western side of Allambie Road, Allambie Heights.





Views of the telegraph pole and street signs on the western side of Allambie Road, Allambie Heights.





Street sign is leaning southward.





Views of the inspection lids and street sign fronting 246 Arnhem Road, Allambie Heights.





Views of the kerb and footpath on the south side of Arnhem Road, Allambie Heights.





Views of the kerb and footpath on the south side of Arnhem Road, Allambie Heights.







Views of the inspection lid on the south side of Arnhem Road, Allambie Heights.

