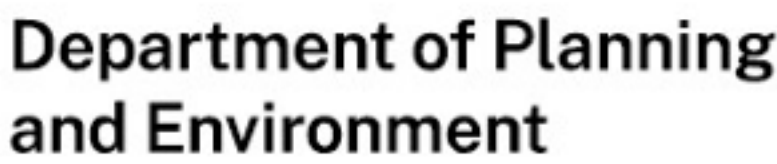


FOR CONTINUATION REFER TO DRAWING CV-0302

NOT FOR CONSTRUCTION



Issued under the Environmental Planning and Assessment Act 1979

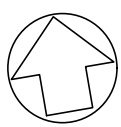
Approved Application No: SSD-26876801 Signed: TVD

Granted on: 23 November 2023 Sheet no: 33 of 36

D	10/02/23	ISSUE FOR INFORMATION		RG	PAL
C	09/02/23	ISSUE FOR INFORMATION		RG	PAL
B	07/02/23	ISSUE FOR INFORMATION		RG	PAL
A	31/01/23	WORK IN PROGRESS		RG	PAL
rev	date	description		drn	ch'k

rev	date	description	dwn	ch'k

enstruct group pty ltd



Level 4, 2 Glen Street
Milsons Point NSW 2061
Australia

Telephone (02) 8904 1444
Facsimile (02) 8904 1555
www.enstruct.com.au

enstruct

projec

THE FOREST HIGH SCHOOL

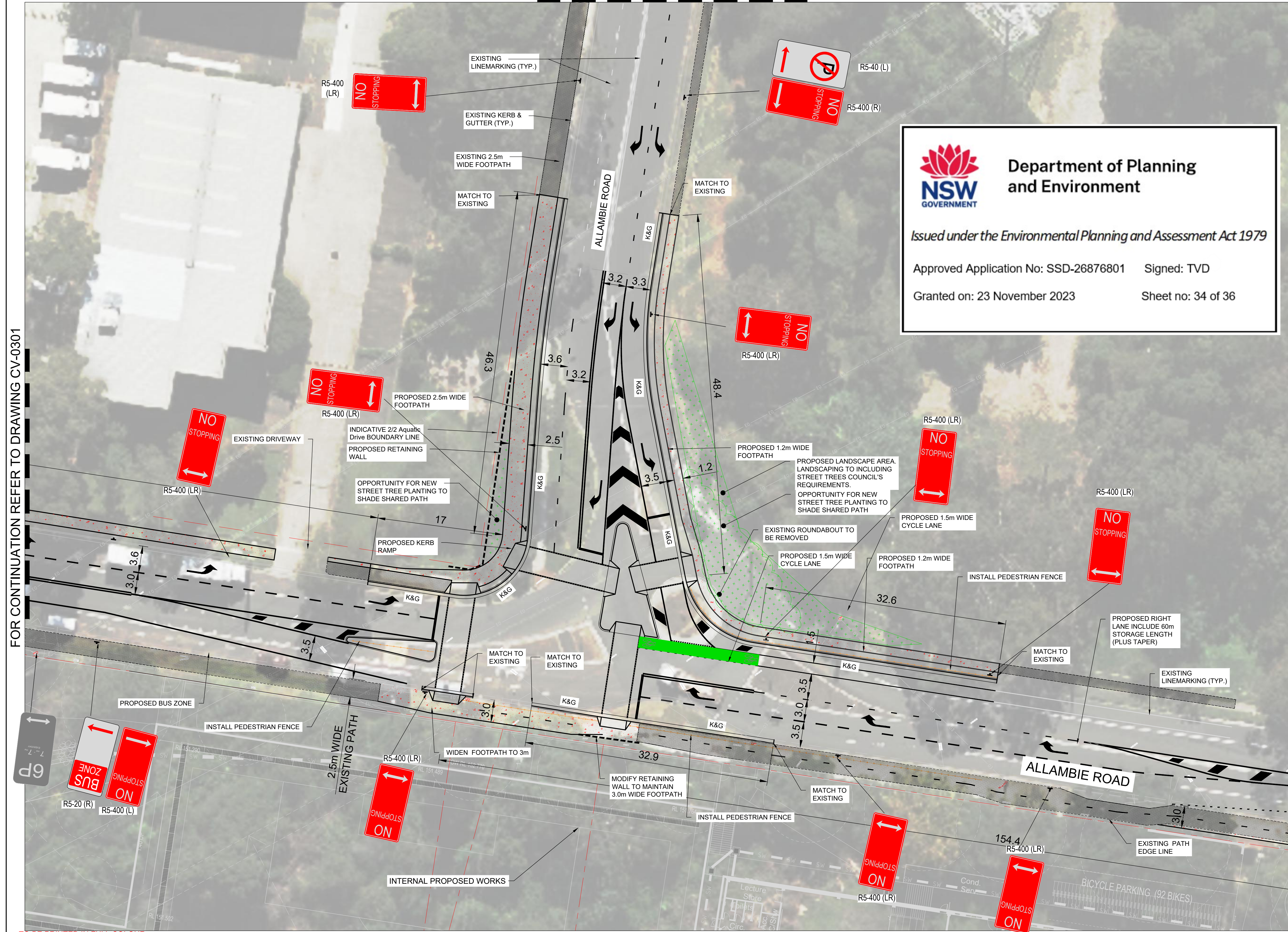
drawing title

PUBLIC DOMAIN PLAN -
SHEET 1


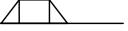





status

FOR INFORMATION ONLY

scale at A1 1:250	drawn RG	checked PAL	approved JAN-23
project no. 6310	sheet CV-0301		rev. D



LEGEND

- | | | |
|-------------------------------------------------------------------------------------|-------------------------------------------|--|
|  | K&G | |
|  | PROPOSED KERB
RAMP | |
|  | PROPOSED
PEDESTRIAN FENCE | |
|  | NEW FOOTPATH TO
COUNCIL SPECIFICATIONS | |
|  | EXISTING POWER POLE | |
|  | BOUNDARY LINE | |
|  | EXISTING FOOTPATH TO
MAINTAIN | |



**Department of Planning
and Environment**

Issued under the Environmental Planning and Assessment Act 1979

Approved Application No: SSD-26876801

Signed: TVD

Granted on: 23 November 2023

Sheet no: 34 of 36

FOR CONTINUATION REFER TO DRAWING CV-0301

FOR CONTINUATION REFER TO DRAWING CV-0303

NOT FOR CONSTRUCTION

status **FOR INFORMATION ONLY**

scale at A1 1:250	drawn RG	checked PAL	approved JAN-23
----------------------	-------------	----------------	--------------------

project no.	sheet	rev.
6310	CV-0302	E

E	14/02/23	ISSUE FOR INFORMATION		RG	PAL
D	10/02/23	ISSUE FOR INFORMATION		RG	PAL
C	09/02/23	ISSUE FOR INFORMATION		RG	PAL
B	07/02/23	ISSUE FOR INFORMATION		RG	PAL
A	31/01/23	WORK IN PROGRESS		RG	PAL
rev	date	description		drn	ch/k

rev	date		description	<div> <div>drn</div> <div>ch'k</div> </div>

enstruct group pty ltd

Level 4, 2 Glen Street
Milsons Point NSW 2061
Australia

Telephone (02) 8904 1444
Facsimile (02) 8904 1555
www.enstruct.com.au



enstruct

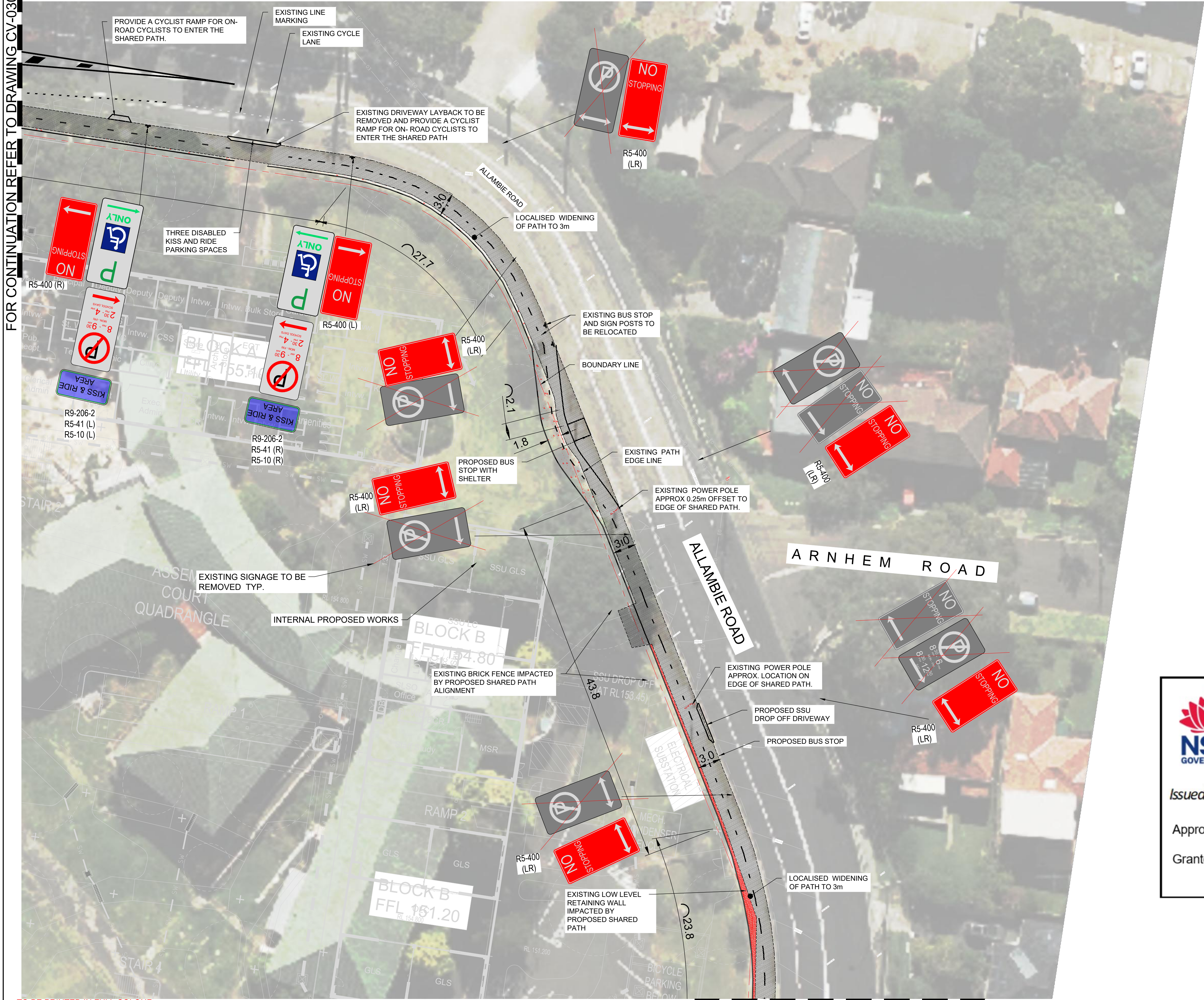
project

THE FOREST HIGH SCHOOL

drawing title
PUBLIC DOMAIN PLAN -
SHEET 2

status			
FOR INFORMATION ONLY			
scale at A1 1:250	drawn RG	checked PAL	approved JAN-23
project no. 6310	sheet CV-0302		rev. E

FOR CONTINUATION REFER TO DRAWING CV-0302




LEGEND

- K&G KERB & GUTTER
- PROPOSED KERB RAMP
- PROPOSED PEDESTRIAN FENCE
- NEW FOOTPATH TO COUNCIL SPECIFICATIONS
- EXISTING POWER POLE
- BOUNDARY LINE
- EXISTING FOOTPATH TO REMAIN

NOTE:
FOR SHARED PATH CONSTRUCTION ON ALLAMBIE ROAD

- RESURFACE EXISTING AND NEW CONCRETE SHARED PATH PAVEMENTS TO PROVIDE SEAMLESS SURFACE. ALTERNATIVELY CUT PAVEMENT JOINT ALONG NEW SHARED PATH CENTRELINE AND PROVE NEW 1.5m WIDTH(MIN.) SECTION OF SHARED PATH.



Department of Planning
and Environment

Issued under the Environmental Planning and Assessment Act 1979

Approved Application No: SSD-26876801

Signed: TVD

Granted on: 23 November 2023

Sheet no: 35 of 36

TO BE PRINTED IN FULL COLOUR

FOR CONTINUATION REFER TO DRAWING CV-0304

NOT FOR CONSTRUCTION

rev	date	description	dm	ch/k
E	14/02/23	ISSUE FOR INFORMATION	RG	PAL
D	10/02/23	ISSUE FOR INFORMATION	RG	PAL
C	09/02/23	ISSUE FOR INFORMATION	RG	PAL
B	06/02/23	ISSUE FOR INFORMATION	RG	PAL
A	31/01/23	WORK IN PROGRESS	RG	PAL

rev	date	description	dm	ch/k

rev	date	description	dm	ch/k

enstruct group pty ltd

Level 4, 2 Glen Street
Mills Point NSW 2061
Australia

Telephone (02) 8904 1444
Facsimile (02) 8904 1555
www.enstruct.com.au



project

THE FOREST HIGH SCHOOL

drawing title

PUBLIC DOMAIN PLAN -
SHEET 3

status

FOR INFORMATION ONLY

scale at A1

1:250

drawn

RG

checked

PAL

approved

JAN-23

project no.

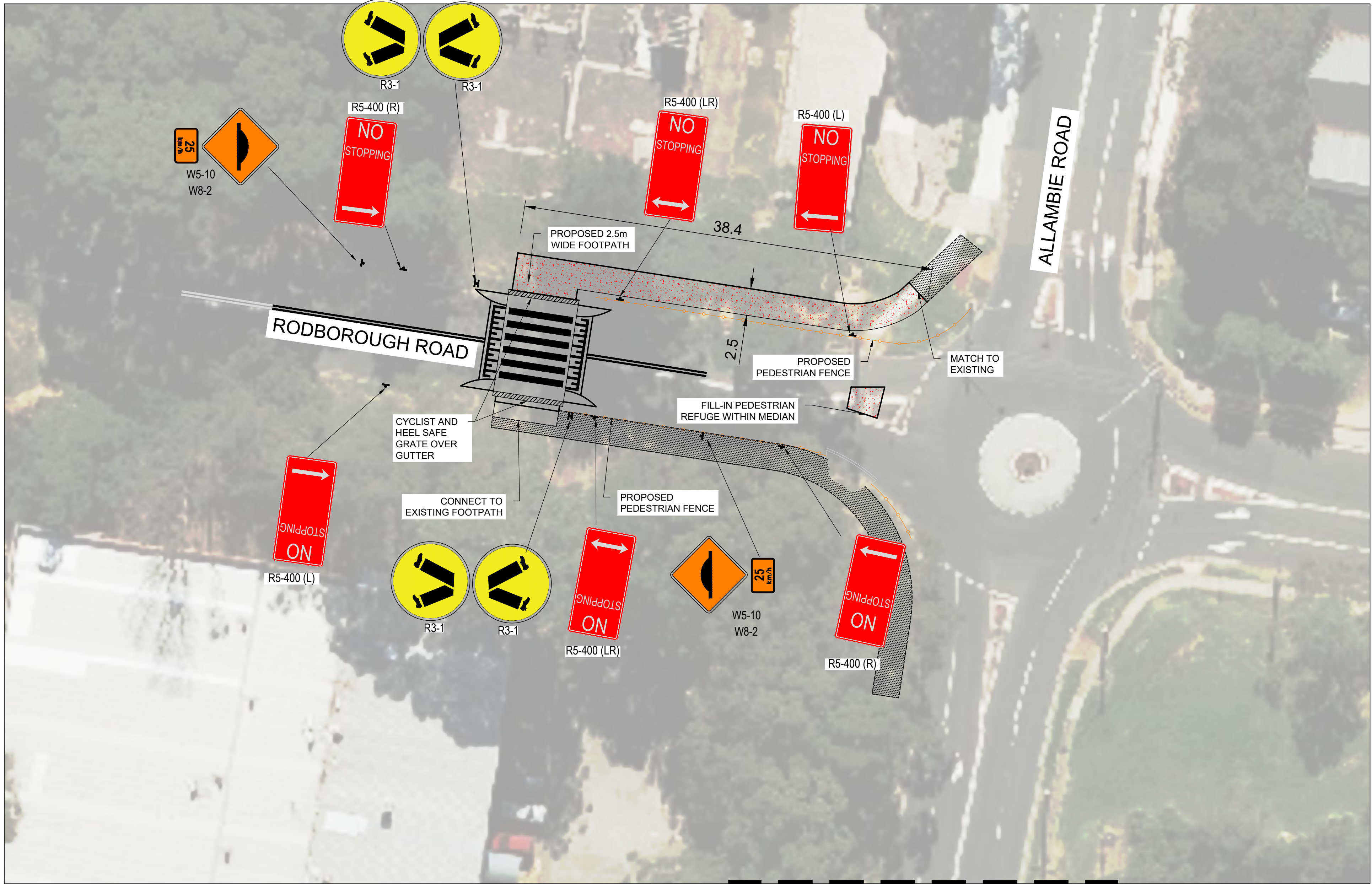
6310

sheet


CV-0303

rev.

E



FOR CONTINUATION REFER TO DRAWING CV-0302



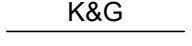
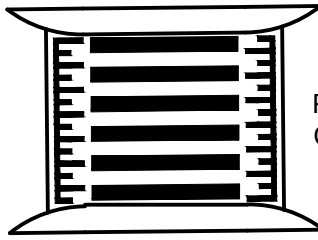




Department of Planning
and Environment

Issued under the Environmental Planning and Assessment Act 1979

Approved Application No: SSD-26876801 Signed: TVD

Granted on: 23 November 2023 Sheet no: 36 of 36

LEGEND

-  K&G KERB & GUTTER
-  PROPOSED WOMBAT CROSSING
-  PROPOSED PEDESTRIAN FENCE
-  NEW FOOTPATH TO COUNCIL SPECIFICATIONS
-  BOUNDARY LINE
-  EXISTING FOOTPATH TO REMAIN

TO BE PRINTED IN FULL COLOUR

NOT FOR CONSTRUCTION

E	14/02/23	ISSUE FOR INFORMATION	RG	PAL
D	10/02/23	ISSUE FOR INFORMATION	RG	PAL
C	09/02/23	ISSUE FOR INFORMATION	RG	PAL
B	06/02/23	ISSUE FOR INFORMATION	RG	PAL
A	31/01/23	WORK IN PROGRESS	RG	PAL
rev	date	description	dm	ch/k

rev	date	description	dm	ch/k
-----	------	-------------	----	------

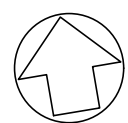
rev	date	description	dm	ch/k
-----	------	-------------	----	------

enstruct group pty ltd

Level 4, 2 Glen Street
Mills Point NSW 2061
Australia

Telephone (02) 8904 1444
Facsimile (02) 8904 1555
www.enstruct.com.au

enstruct



project
THE FOREST HIGH SCHOOL

drawing title
PUBLIC DOMAIN PLAN -
SHEET 4

status
FOR INFORMATION ONLY

scale at A1 1:250	drawn RG	checked PAL	approved JAN-23
----------------------	-------------	----------------	--------------------

project no. 6310	sheet CV-0304	rev. E
---------------------	------------------	-----------