

# Tintenbar-Teven Public School

## Works notification

November 2021

A project is underway to improve the hall facilities at Teven-Tintenbar Public School. This will include provision of communal hall space with sound system, storage facilities for sports equipment and chairs, and accessible toilets, a new covered outdoor area, a new canteen, an OOSH office, kitchenette and storeroom.

The development application (DA) has been approved by Ballina Shire Council. The school shed relocation works will be completed by November 2021. The design for the new school hall was developed in consultation with the school leadership.

### Site establishment for construction of the new school hall

Site establishment activities for the construction of the new school hall will start in the week commencing Monday 6 December. Works will include:

- installation of temporary construction fencing and hoardings
- removal of vegetation and trees
- installation of a site office, sheds and toilet within the works zone
- connection of temporary services (water and electricity).

### Work hours

Standard construction working hours will be 7:00am to 6:00pm Monday to Friday, and 8:00am to 1:00pm on Saturdays. No work will take place on Sundays or public holidays unless otherwise notified.

### Traffic management

Vehicle access to the works zone will be from the school entry road via Fredericks Lane. Site vehicles will give way to pedestrians at all times, and where possible deliveries to the site will be made outside of drop off and pick up times. Gates to the works compound will be kept closed when not in use and site contact details will be displayed at the compound entry.

Traffic controllers will be in place to assist with the management of oversized deliveries to site. Construction staff will comply with local parking regulations and access to private properties will be maintained at all times.

### Next steps

In the weeks following site establishment, works will start on the new school hall. These works will include:

- continued vegetation removal
- excavation and bulk earthworks
- installation of new in-ground services.

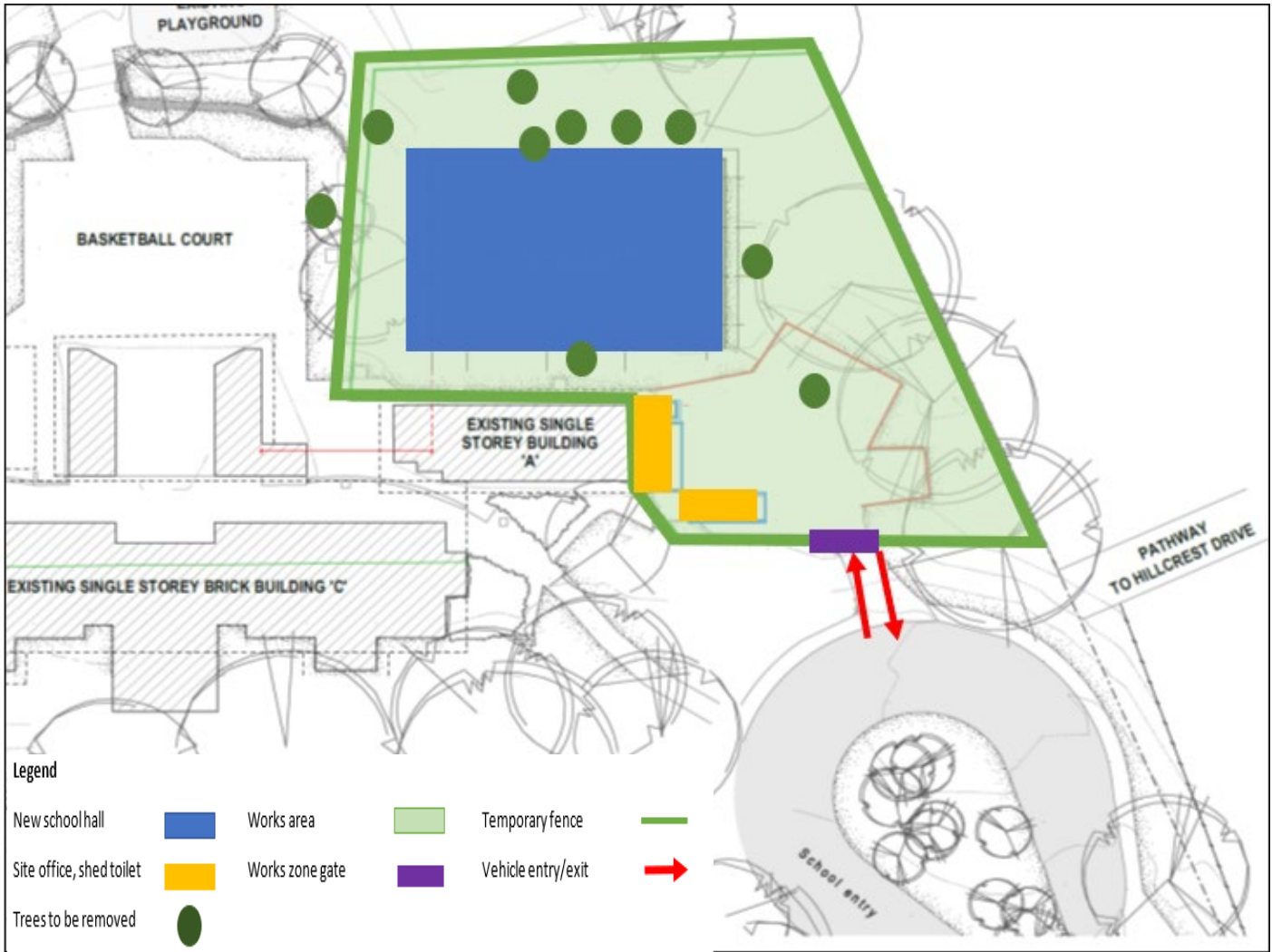
School Infrastructure NSW (SINSW) will continue to work closely with the school leadership team to ensure continuity of school operations and to minimise any potential impact on student learning during construction.

---

### For more information contact:

School Infrastructure NSW  
Email: [schoolinfrastructure@det.nsw.edu.au](mailto:schoolinfrastructure@det.nsw.edu.au)  
Phone: 1300 482 651  
[www.schoolinfrastructure.nsw.gov.au](http://www.schoolinfrastructure.nsw.gov.au)

### Indicative site layout map



### Where will the construction team park?

The construction team will utilise the existing staff carpark on site and the grass verge on Frederick's lane.

### Where will staff and parents park?

During construction, staff will be asked to park on adjacent streets. We understand this may be a temporary inconvenience and appreciate your patience as we deliver the much-needed upgrade to the hall.

### Will there be trees removed as part of these works?

As part of the site preparation works and to allow for construction of the new school hall, trees are to be removed from within the works zone (refer to above site plan). The removal of these trees has been approved by Ballina Shire Council as part of the DA.

### Will there be any changes to the OSCH arrangements?

The OSCH will not be impacted by construction.

### For more information contact:

School Infrastructure NSW  
Email: [schoolinfrastructure@det.nsw.edu.au](mailto:schoolinfrastructure@det.nsw.edu.au)  
Phone: 1300 482 651  
[www.schoolinfrastructure.nsw.gov.au](http://www.schoolinfrastructure.nsw.gov.au)