

# Tintenbar-Teven Public School

## Works notification

September 2021

A project is underway to improve the hall facilities at Teven-Tintenbar Public School. This will include provision of a new communal hall space with sound system, storage facilities for sports equipment and chairs, and accessible toilets, a new covered outdoor area, a new canteen, an OSHC office, kitchenette and storeroom.

### School shed relocation

The school shed is currently located within the footprint of the new hall and needs to be relocated in preparation for the proposed hall to be constructed. The shed relocation works will start from Tuesday 5 October 2021 and are expected to be complete by Friday 29 October 2021.

The school shed will be dismantled and move to a new site to the west of Building C. See the diagram overleaf for the new location.

The work activities will include:

- Installation of temporary fencing around the works area
- Construction of concrete slab in new location
- Dismantling of shed from current location
- Rebuilding of shed on new location
- Internal shed works including lining & fitting out of shelving.

These works are an exempt development and can proceed while the Development Application (DA) for the remainder of the upgrade is being assessed by Ballina Shire Council.

Contractors and subcontractors will be required to comply with local parking regulations and access to private properties will be maintained at all times.

### Work hours

Standard project work hours are 7am to 5pm, Monday to Friday and 8am to 1pm, Saturday. No work will take place on Sundays or public holidays.

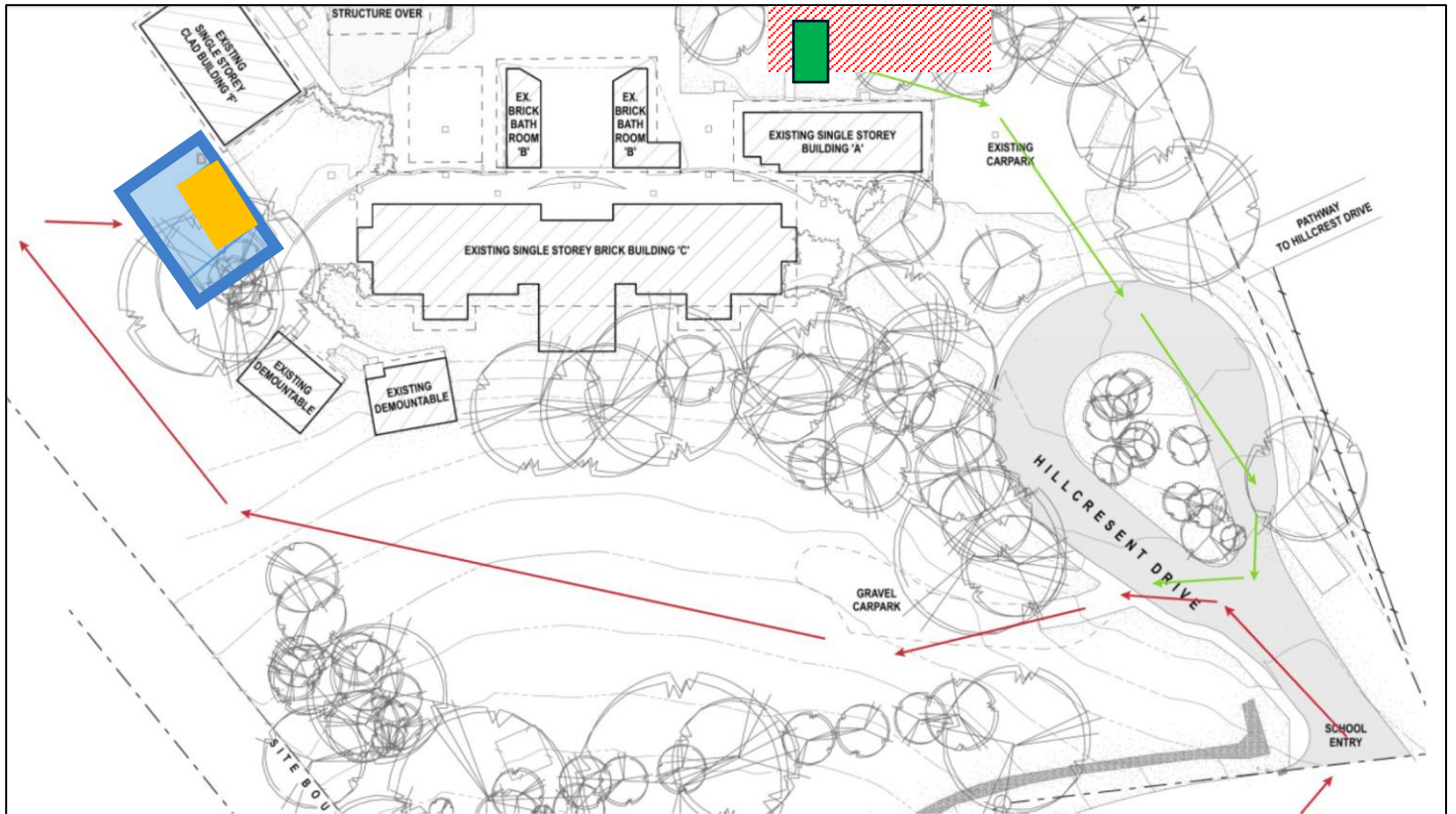
Thank you for your patience while we deliver this important school infrastructure.

---




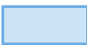



#### For more information contact:

School Infrastructure NSW  
Email: [schoolinfrastructure@det.nsw.edu.au](mailto:schoolinfrastructure@det.nsw.edu.au)  
Phone: 1300 482 651  
[www.schoolinfrastructure.nsw.gov.au](http://www.schoolinfrastructure.nsw.gov.au)

Site map



Legend

|                       |   |                     |   |                         |   |
|-----------------------|---|---------------------|---|-------------------------|---|
| Current shed site     |  | Relocated shed site |  | Contractor access route |  |
| Works area            |  | Site fencing        |  | Proposed new hall       |  |
| Shed relocation route |  |                     |   |                         |   |

For more information contact:

School Infrastructure NSW  
 Email: [schoolinfrastructure@det.nsw.edu.au](mailto:schoolinfrastructure@det.nsw.edu.au)  
 Phone: 1300 482 651  
[www.schoolinfrastructure.nsw.gov.au](http://www.schoolinfrastructure.nsw.gov.au)